

2022 ORANGE COUNTY PROJECTIONS



Municipal Water District of Orange County
Planning & Operations Committee
February 5, 2024

Deborah Diep, Director
Center for Demographic Research
www.fullerton.edu/cdr

Acronyms

- ACS- American Community Survey, U.S. Census Bureau
- ADU- Accessory Dwelling Unit
- CDPH- California Department of Public Health
- CDR- Center for Demographic Research
- DOF- California State Department of Finance
- EDD- California State Employment Development Department
- MOC- Management Oversight Committee
- NIMBY- Not In My Backyard
- OCCOG- Orange County Council of Governments
- OCP- Orange County Projections
- OCTA- Orange County Transportation Authority
- PHE- Population, Housing Units, & Employment
- RHNA- Regional Housing Needs Assessment
- RTP- Regional Transportation Plan
- SCAG- Southern California Association of Governments
- SCS- Sustainable Communities Strategy
- TAC- Technical Advisory Committee
- TAZ- Traffic Analysis Zone

Sponsorship and Administration

The Center for Demographic Research (CDR) was established in 1996 to ensure Orange County continued its presence in the development and support of demographic information. The CDR is located at California State University, Fullerton, ensuring data consistency through the maintenance of a centralized data source of Orange County demographic characteristics.

CDR Sponsors 2023-2026



Cal State
Fullerton



Contributing
Partners:



CDR's Core Project: Orange County Projections (OCP)

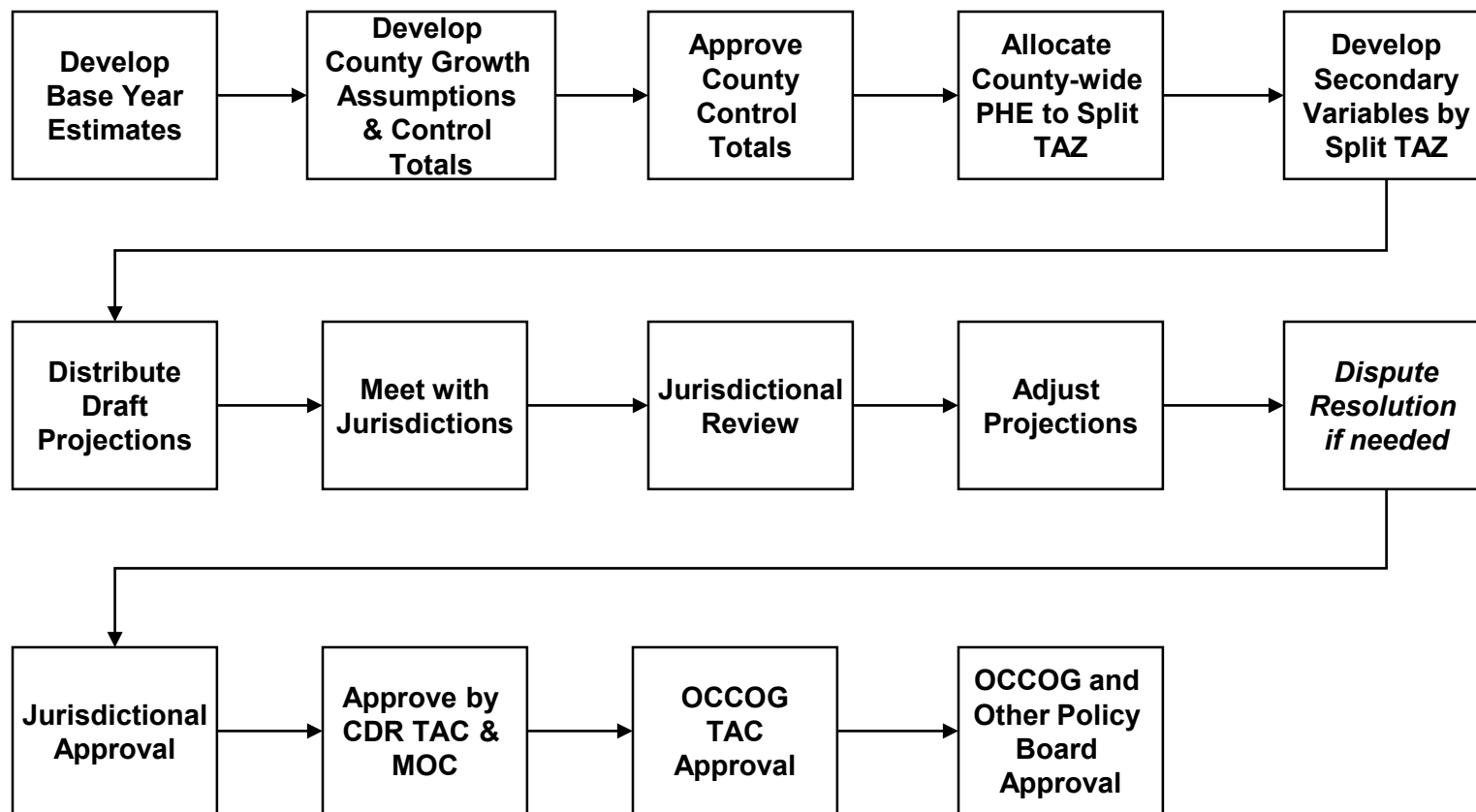
- Prepare demographic forecasts for Orange County, California: Orange County Projections (OCP)
 - Socio-economic dataset of future population, housing, and employment with a minimum 20-year horizon
 - OCP-2022: 14th iteration, 8th for CDR
 - Top-down, Bottom-up:
 - Project county-wide population, housing, and jobs
 - Meet with, collect, & incorporate detailed input from each jurisdiction
 - Monitored by technical & management committees
 - Approval process involves CDR & OCCOG Technical Advisory Committees, CDR management committee, and OCCOG Board
 - Technical participation in regional and local activities to ensure, on Orange County agencies' behalf, that a technical review and local efforts and information are incorporated into regional planning efforts

OCP Uses

- Uniform, long-range forecast used in local and regional planning
 - OCTA's Long Range Transportation Plan
 - SCAG's Regional Transportation Plan/Sustainable Communities Strategy (RTP/SCS), aka 2024 Connect SoCal
 - Infrastructure Planning, e.g., transportation
 - City planning among Orange County's 34 cities, plus the County of Orange
 - Air Quality Planning
 - Congestion Management Plans
 - Calculating demand for water, sewer, and other services
 - Municipal Water District of Orange County
 - Orange County Water District
 - Orange County Sanitation District
- Policy Uses
 - Goal is to provide the most accurate and detailed estimates and forecast in order for elected officials to make informed policy decisions

OCP-2022 Process

Develop TAZ-Level Projections



Structure of the Models

- Age cohort-component model
 - $P_f = P_b + B - D + M_i - M_o$
 - P_f = Forecast Population
 - P_b = Baseline Population
 - B = Projected Births
 - D = Projected Mortality
 - M_i = Projected In-Migration
 - M_o = Projected Out-Migration
- Shift-share model
 - Orange County's share of California employment and growth
 - Growth by sectors

OCP-2022 Inputs

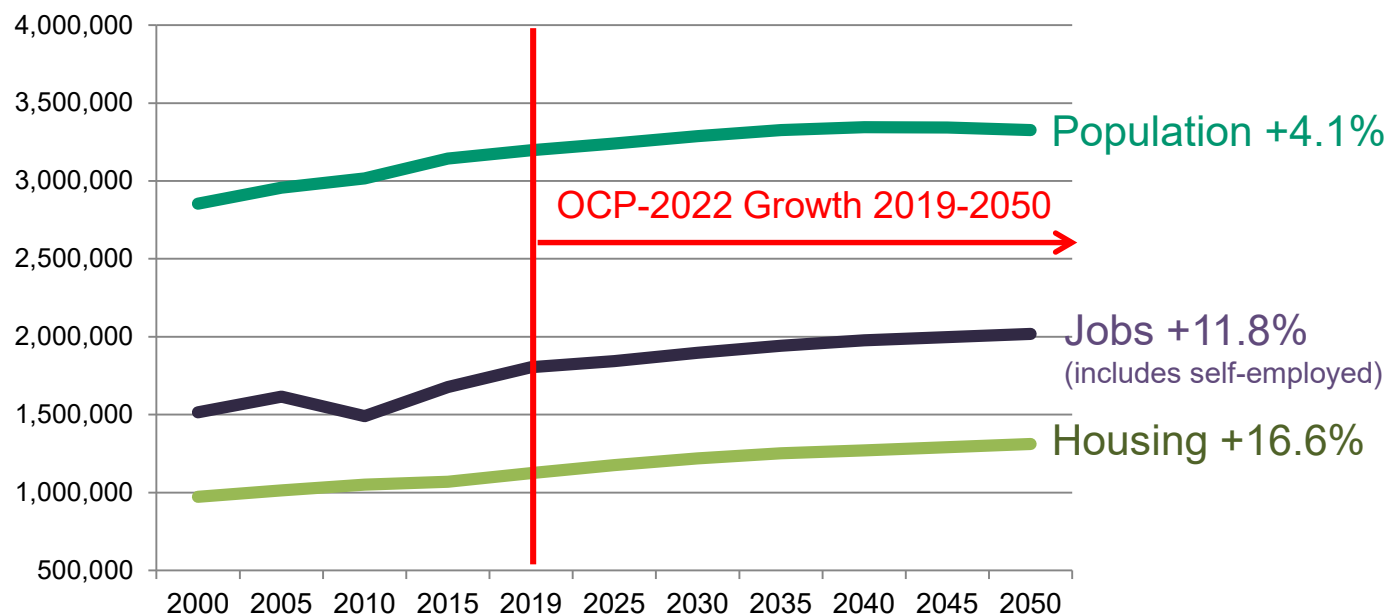
- 2020 Census & American Community Survey (ACS)
- DOF Population Estimates
- EDD Employment Estimates
- CDPH Vital Statistics: Birth & Death data
- CDR Small Area Population & Housing Estimates
- CDR Small Area Employment Estimates
- Local Universities' Short-Term Economic Forecasts
- SCAG Long-Term Economic Forecasts
- City & County General Plans, Economic Development & Redevelopment Plans
- Project Proposals & Entitlements
- City/County Review & Comment

Documentation

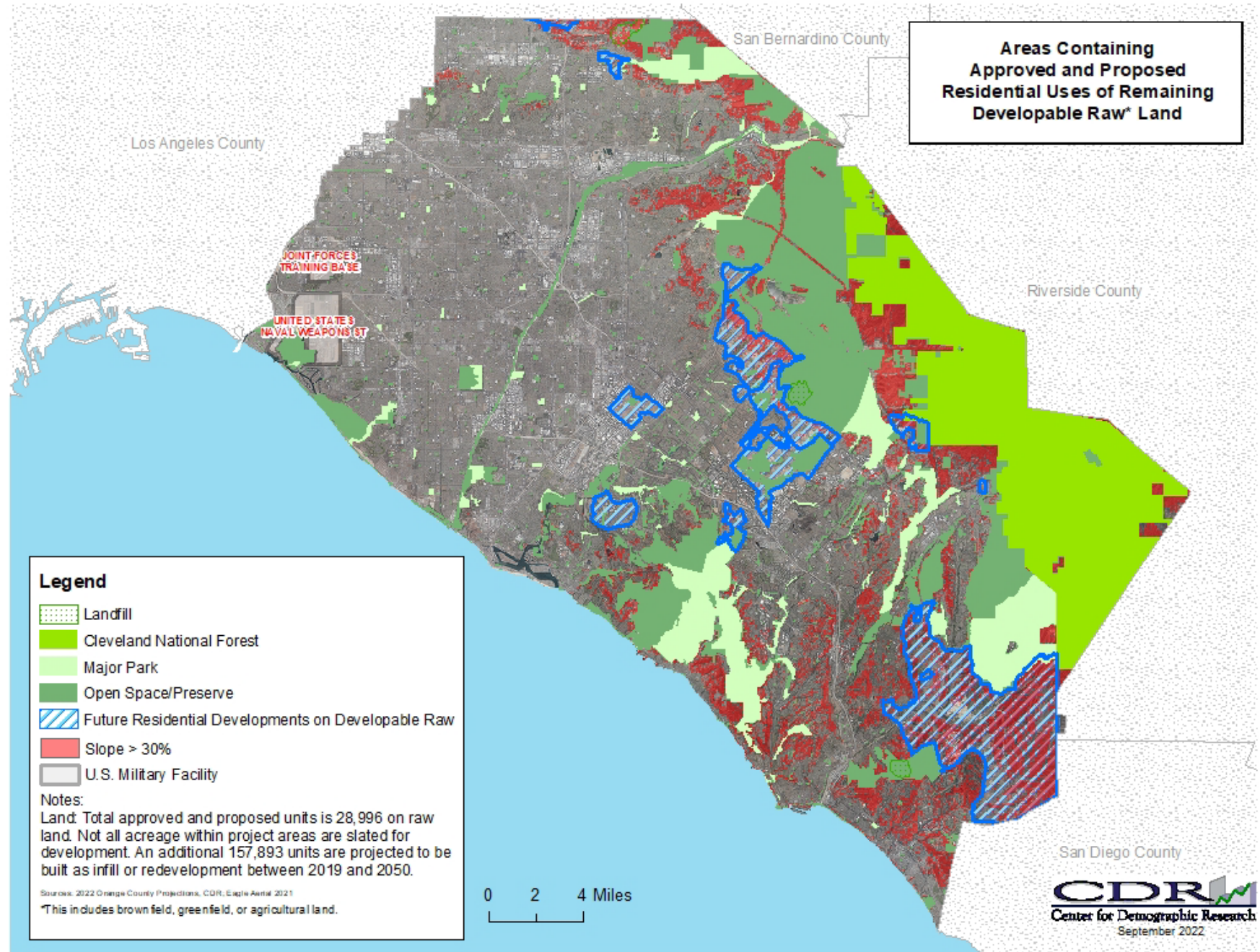
- General Plan zoning
- Build-out capacity
- Developable acreage and potential future densities by type of land use (residential, commercial, industrial)
- Recent development approvals of specified locations
- Building finals and demolition data
- Information about annexations
- Registered business records
- Historical growth trends
- Ethnicity of resident population
- Professionally prepared market research/study
- Legislative actions and ordinances
- Habitat constraints
- Other

OCP-2022

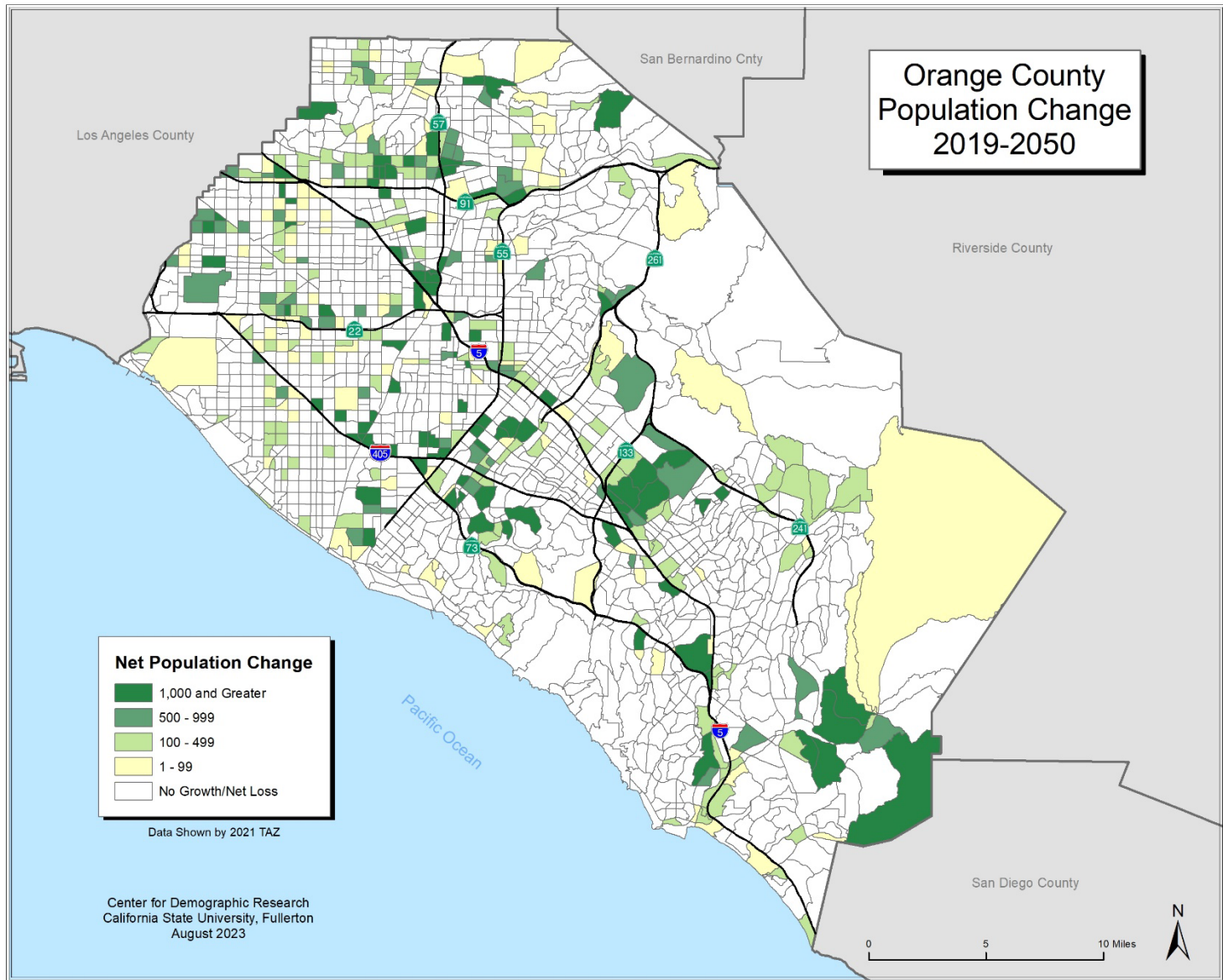
	Estimate	Projections					
	2019	2025	2030	2035	2040	2045	2050
Employment	1,805,476	1,843,470	1,897,773	1,941,915	1,976,791	1,997,885	2,018,954
Housing Units	1,124,849	1,176,165	1,220,390	1,252,783	1,271,438	1,290,931	1,311,738
Population	3,196,231	3,239,474	3,287,447	3,327,150	3,345,665	3,343,718	3,327,124



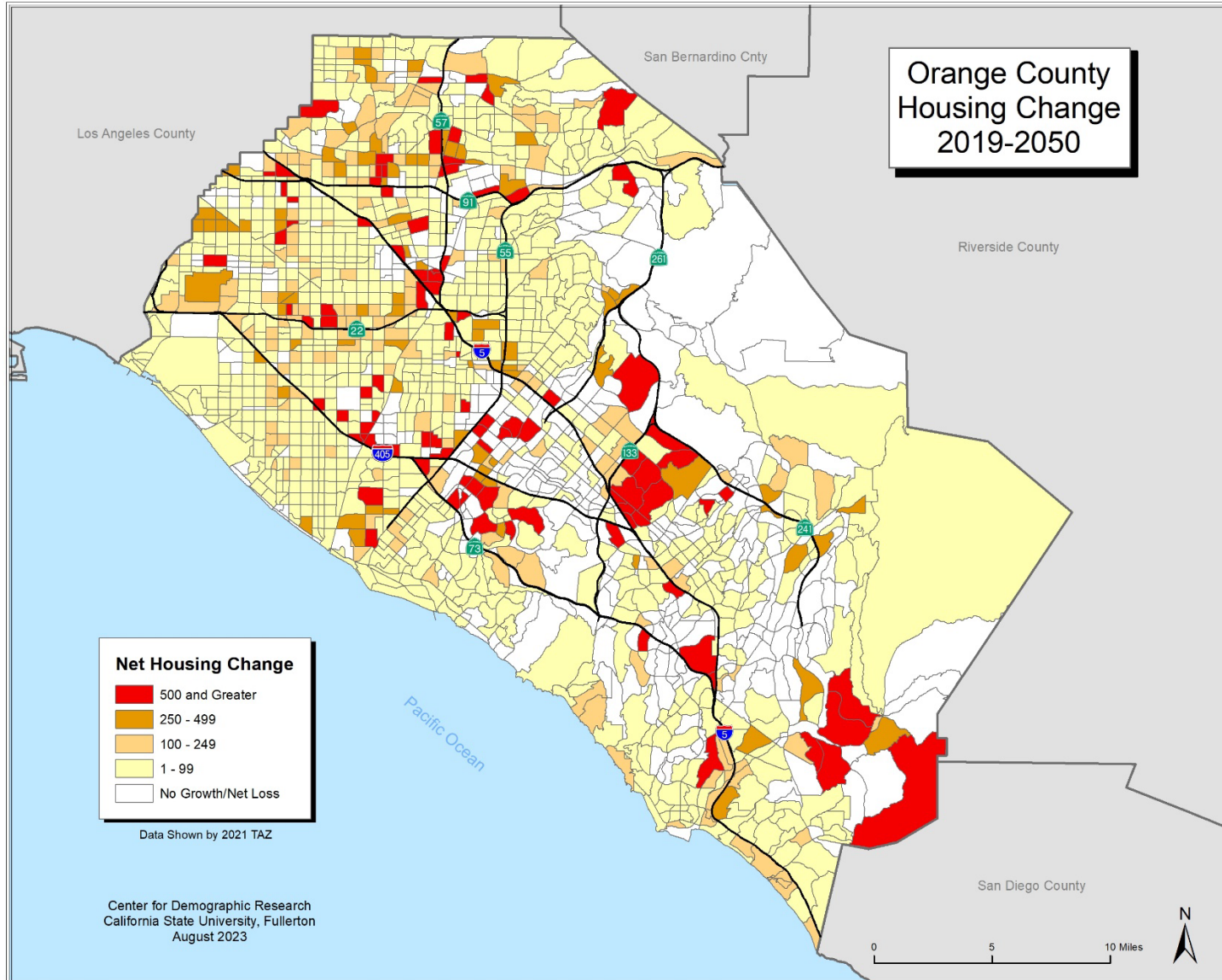
**Areas Containing
Approved and Proposed
Residential Uses of Remaining
Developable Raw* Land**



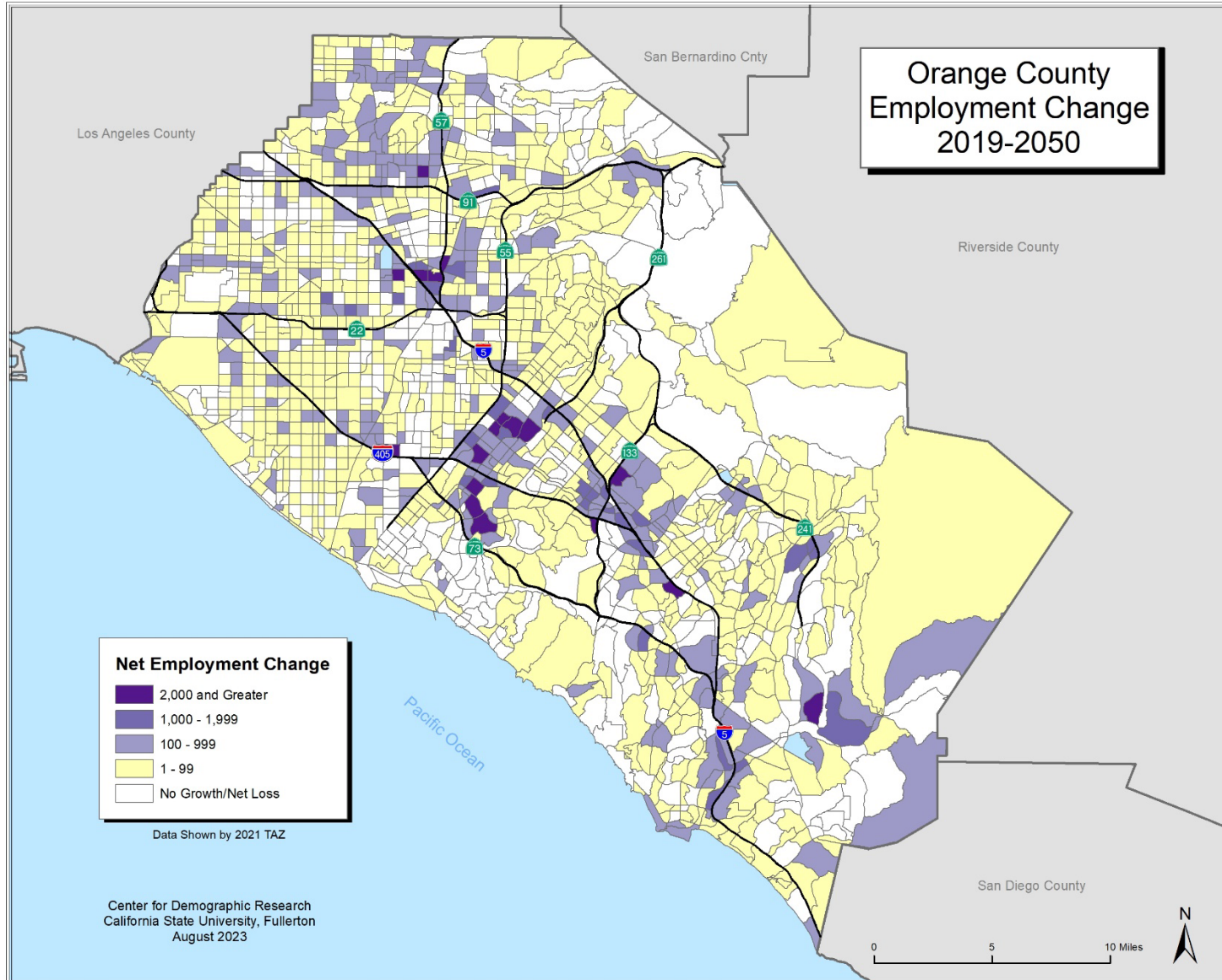
Population Change



Housing Unit Change



Employment Change

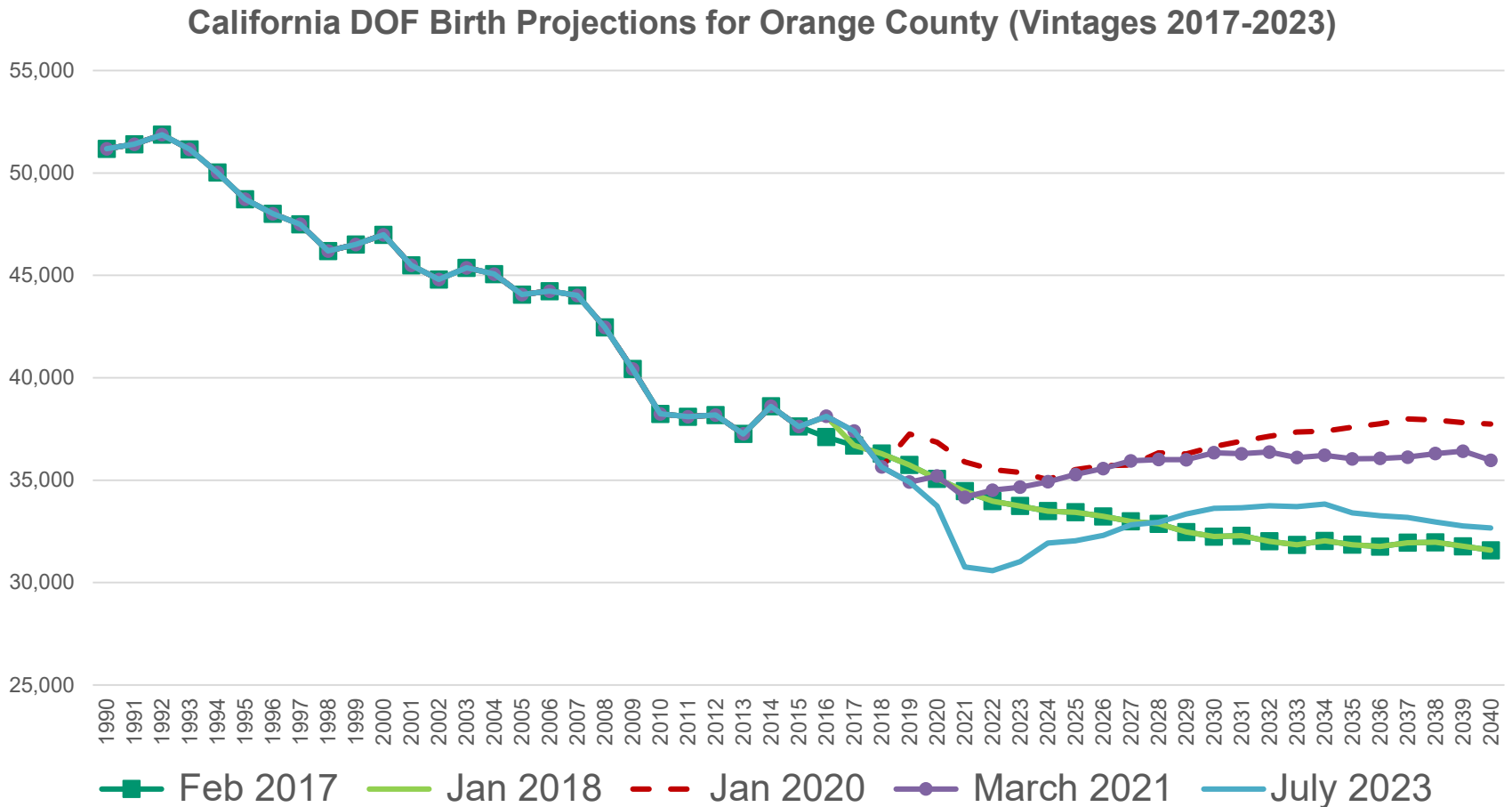


Wild Cards

- Immigration Policy
- Infrastructure
- Housing Costs
- Regulation
- Economic Competitiveness
- NIMBYISM
- Planning Paradigm
- New & Revised Data (or delayed)

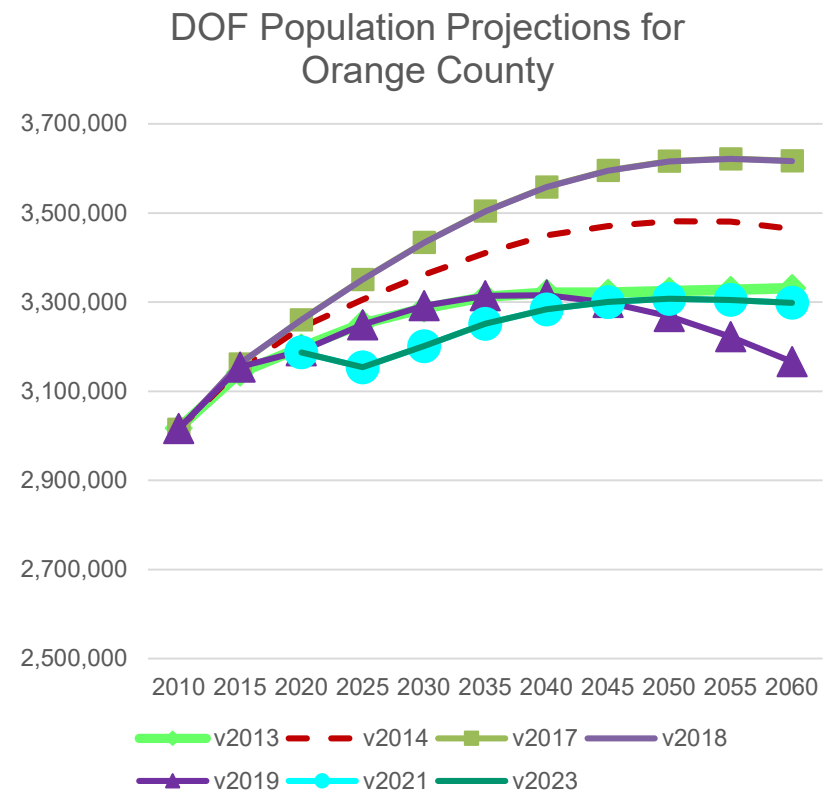
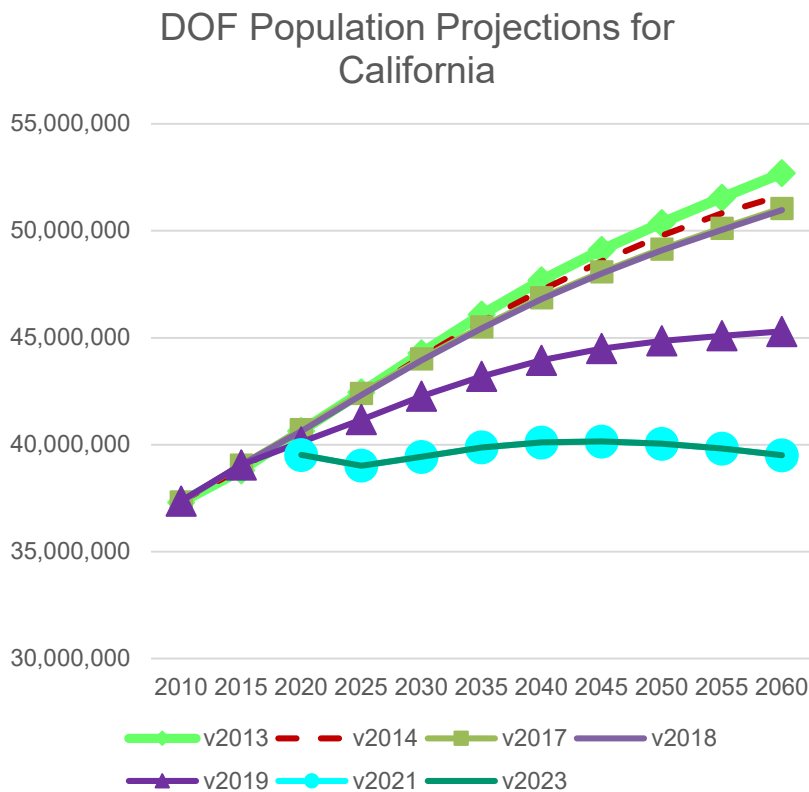
Wild Cards:

Birth rates were already dropping...



Wild Cards: Changing circumstances affect assumptions and outputs of projections series

California DOF Population Projections (Vintages 2013-2023)



Questions?



Deborah Diep
Director
ddiep@fullerton.edu
(657) 278-4596
www.fullerton.edu/cdr

1121 N. State College Blvd.
Suite 238
Fullerton, CA 92831
(657) 278-3009