



Water Supply Report

May 13, 2022

WATER RESOURCES SUMMARY

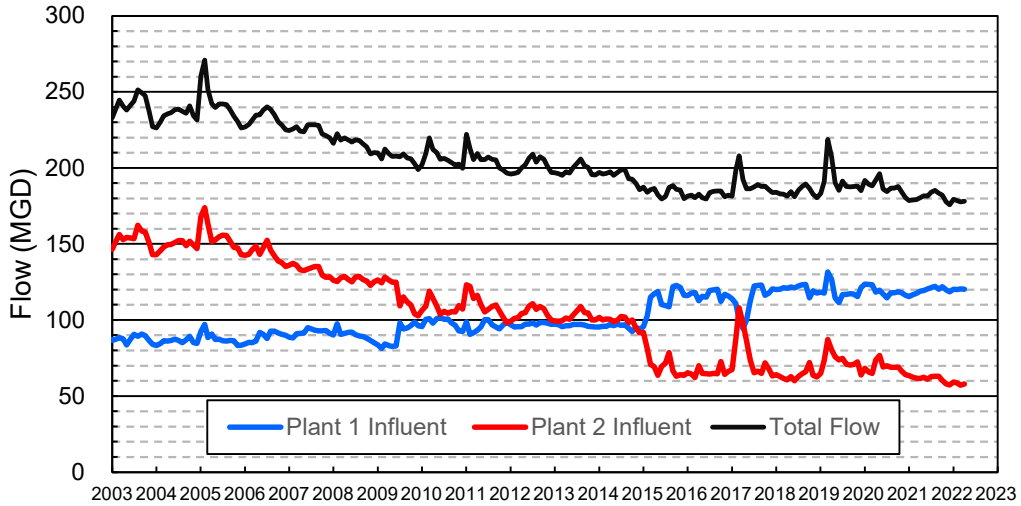
March 2022

INFLOWS & OUTFLOWS (acre-feet)	Total for Month	Year to Date - This Year Last Year	
BASIN SUPPLIES			
Water Purchases from MWD (excludes In Lieu)	0	20,003	0
Water into MWD Storage Account (excludes In Lieu)	0	0	0
SAR & Santiago Creek Flows (accounts for storage to/from recharge facilities)	11,310	104,345	89,427
GWRS Water to Forebay	5,939	45,298	45,721
GWRS Water to Mid-Basin Injection Wells	652	5,889	8,173
GWRS Water to Talbert Barrier	1,918	18,561	20,269
OC-44 and F. Valley Water to Talbert Barrier	0	6	16
Alamitos Barrier Water	220	2,129	2,038
Incidental Recharge (estimated)	3,300	22,700	15,551
Evaporation from Recharge Basins	(214)	(1,833)	(2,406)
River Flow Lost to Ocean	(121)	(16,390)	(1,218)
Total Groundwater Recharge	23,004	200,707	177,571
WATER PRODUCTION			
Groundwater Production	21,426	189,413	212,190
MWD Storage Program Withdrawals	<u>0</u>	<u>0</u>	<u>0</u>
Total Groundwater Production	21,426	189,413	212,190
BASIN BALANCE			
Change in Groundwater Storage	1,578	11,294	(34,619)
Change in Groundwater Storage excluding MWD Stored Water	1,578	11,294	(34,619)
Accumulated Overdraft	-----	236,708	234,622
Accumulated Overdraft excluding MWD Storage	-----	236,708	234,622
IN LIEU WATER			
OCWD In Lieu Purchases (MWD Cyclic Storage)	0	0	0
MWD In Lieu Storage	<u>0</u>	<u>0</u>	<u>0</u>
Total In Lieu	0	0	0
OTHER KEY INFORMATION			
1. MWD Water Deliveries to Producers	8,678	88,342	71,738
2. Basin Production Percentage	71.2%	68.2%	74.7%
3. Total Water Demand	31,653	291,599	297,350
4. Total GWRS Production	8,516	69,792	74,213
5. Green Acres Project Water	286	2,677	3,013
6. SAR Water Quality			
- Total Dissolved Solids (TDS) of SAR below Prado Dam (ppm)	690	-----	513
- Total Nitrogen of SAR below Prado Dam (ppm)	4.5	-----	2.4
7. Month-End Water Storage Behind Prado Dam	783	-----	3,605
8. Month-End Water Storage in Recharge Facilities	14,487	-----	12,510
9. Water Storage Change in Recharge Facilities	(2,277)	5,827	(3,229)
10. Total Artificial Recharge	19,704	178,007	162,018
11. Monthly Mean Temperature at Santa Ana Fire Station (°F)	63.3	-----	59.4
12. Rainfall at FHQ (inches)	0.80	6.70	5.73

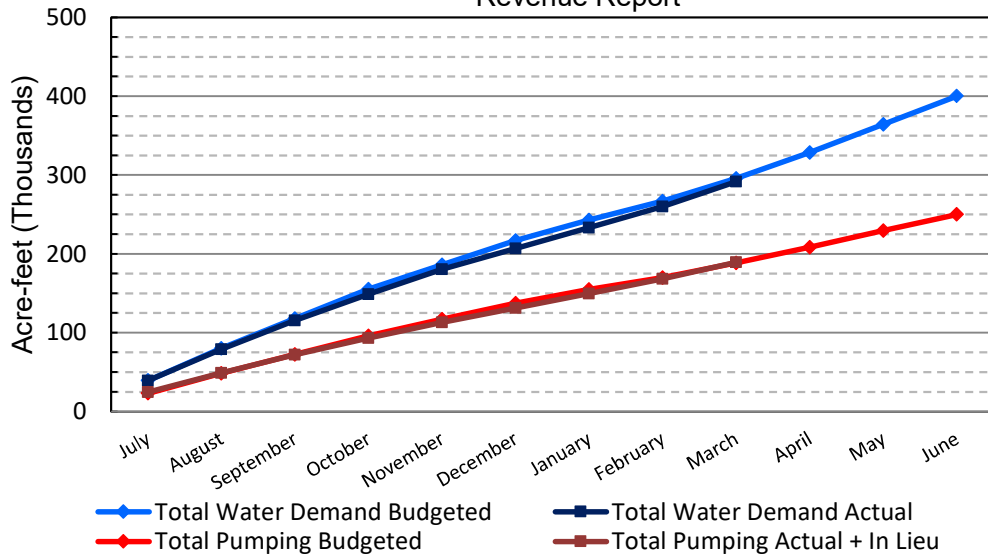
*** Note: Data are preliminary, subject to change

4/14/2022

Orange County Sanitation District Influent Flows Report

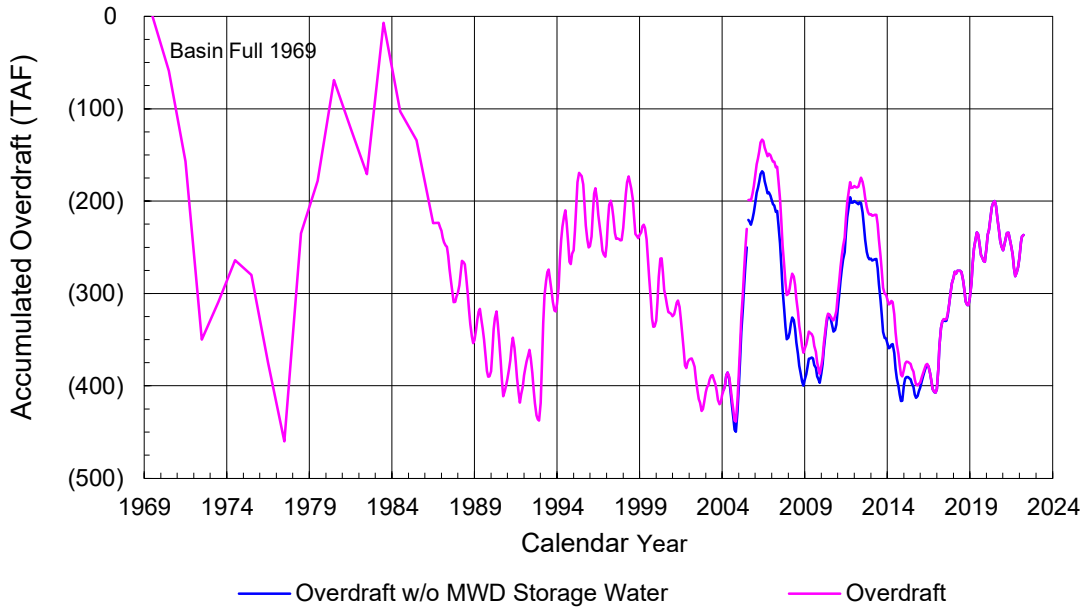


2021-22 Water Demands/Groundwater Pumping + In Lieu/RA Revenue Report

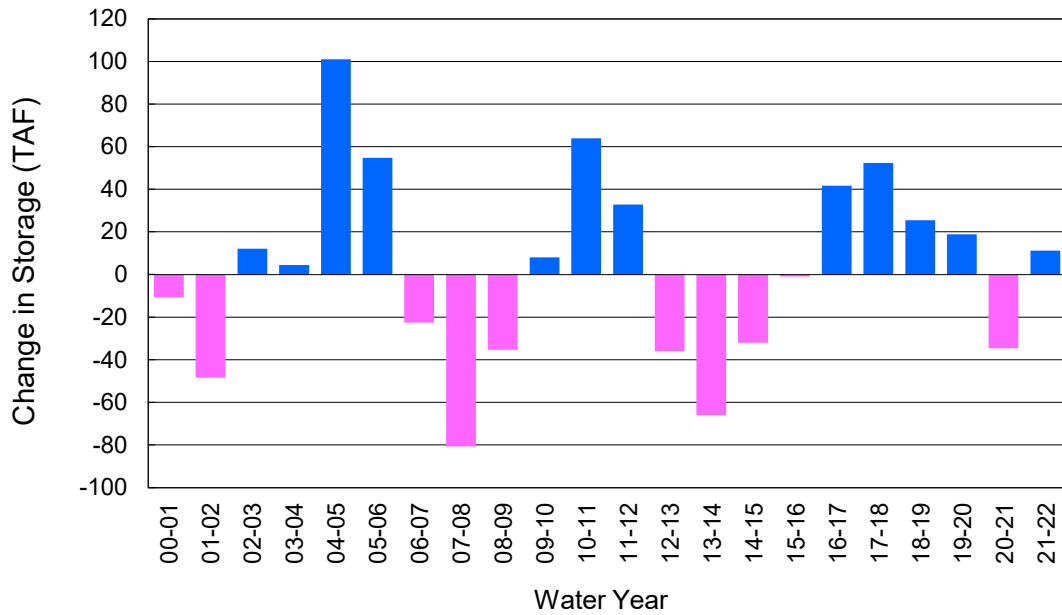


	Monthly		Accumulated Total for the Year			
	Budget	Actual	Budget	Actual	Difference	Percent
Total Water Demand	28,700	31,653	295,500	291,599	-3,901	98.68%
Total Pumping + In Lieu	18,400	21,426	188,300	189,413	1,113	100.59%
RA Revenue	\$8,500,800	\$9,898,753	\$86,994,600	\$87,508,827	\$514,227	100.59%

Accumulated Overdraft



YTD Change in Groundwater Storage in OCWD



PRODUCERS WATER USAGE SUMMARY

March 2022

(AF except BPP)

WATER AGENCY	Ground-water (1)	In Lieu	Reclaimed Water	Total Import (2)	Total Demand	2021-22 YTD Demand	2020-21 YTD Demand	YTD % Diff Demand	MAR 2022 BPP	2021-22 YTD BPP	2020-21 YTD BPP
Anaheim	1,223	0	0	3,679	4,902	44,378	42,718	104%	25.0%	29.2%	26.4%
Buena Park	1,037	0	0	5	1,043	9,738	9,779	100%	99.5%	85.9%	89.1%
East Orange County	0	0	0	69	69	677	739	92%	0.0%	0.3%	9.6%
Fountain Valley	699	0	106	0	805	7,545	7,632	99%	100.0%	100.0%	100.0%
Fullerton	1,428	0	0	401	1,829	17,572	17,950	98%	78.1%	76.0%	71.4%
Garden Grove	1,200	0	0	280	1,480	16,112	17,040	95%	81.1%	84.3%	75.1%
Golden State	1,208	0	0	642	1,850	17,218	17,905	96%	65.3%	62.8%	71.6%
West OC System	1,125	-	-	6	1,130	10,430	10,758	97%	na	na	na
East OC System	83	-	-	636	719	6,788	7,147	95%	na	na	na
Huntington Beach	1,630	0	0	508	2,138	19,114	20,465	93%	76.2%	83.2%	83.8%
Irvine Ranch	4,129	0	1,314	16	5,458	47,214	46,049	103%	99.6%	98.9%	99.5%
DRWF Clear	2,763	-	-	-	2,763	21,724	20,935	104%	na	na	na
DRWF Color	302	-	-	-	302	4,545	6,275	72%	na	na	na
Laguna Beach	0	0	0	250	250	2,426	2,682	na	0.0%	0.0%	18.5%
La Palma	144	0	0	0	144	1,297	1,482	88%	100.0%	95.3%	100.0%
Mesa Water (MW)	1,342	0	71	0	1,413	12,902	12,806	101%	100.0%	98.3%	99.9%
MW Clear	1,022	-	-	-	1,022	9,767	9,444	103%	na	na	na
MW Amber	320	-	-	-	320	2,283	2,686	85%	na	na	na
Newport Beach	350	0	32	745	1,127	10,655	11,328	94%	31.9%	71.2%	96.0%
Orange	1,281	0	0	783	2,064	19,769	20,649	96%	62.1%	53.0%	80.9%
OCWD (GAP)	137	0	0	0	137	1,121	1,214	92%	100.0%	100.0%	100.0%
Santa Ana	2,186	0	27	497	2,711	24,642	25,688	96%	81.5%	77.6%	76.0%
Seal Beach	285	0	0	1	285	2,493	2,538	98%	99.7%	76.6%	65.9%
Serrano	191	0	0	40	230	2,074	2,071	100%	82.8%	12.2%	0.2%
Tustin	464	0	0	399	863	8,073	8,313	97%	53.8%	56.4%	91.1%
Westminster	880	0	0	0	880	8,057	8,135	99%	100.0%	100.0%	100.0%
Yorba Linda	<u>1,166</u>	<u>0</u>	<u>0</u>	<u>352</u>	<u>1,518</u>	<u>14,462</u>	<u>14,912</u>	<u>97%</u>	<u>76.8%</u>	<u>19.4%</u>	<u>72.1%</u>
SUBTOTAL:	20,979	0	1,549	8,667	31,196	287,538	292,097	98%	71.2%	68.2%	74.7%
Other Producers (Est ~3% of Subtotal)	<u>447</u>	<u>0</u>	<u>0</u>	<u>11</u>	<u>458</u>	<u>4,062</u>	<u>5,253</u>	<u>77%</u>			
TOTAL:	21,426	0	1,549	8,678	31,653	291,599	297,350		71.2%	68.2%	74.7%
OCWD (Talbert Barrier)	0		1,918	0	1,918	18,567	20,285				
OCSD (GAP)	na		50	na	50	444	888				

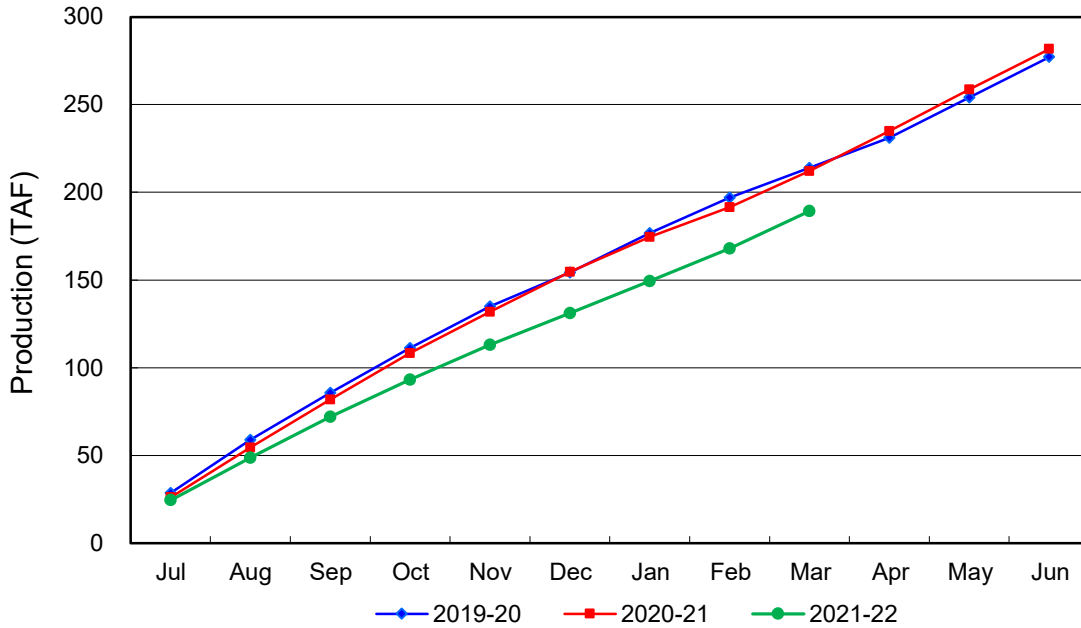
Estimated

(1) Excludes MWD CUP Withdrawals

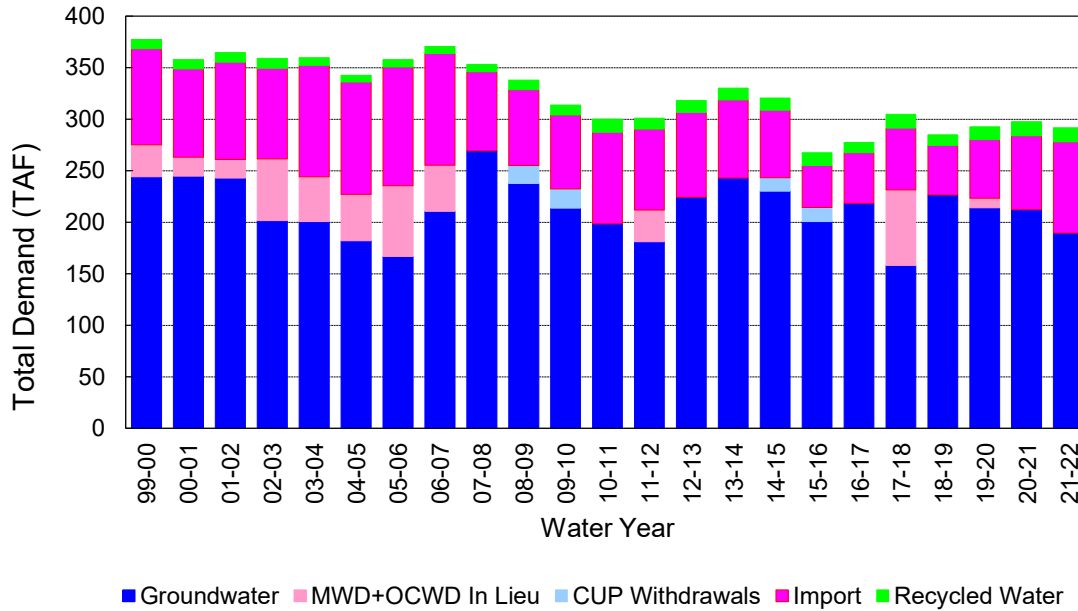
(2) Includes MWD CUP Withdrawals & In Lieu Water

4/14/2022 13:27

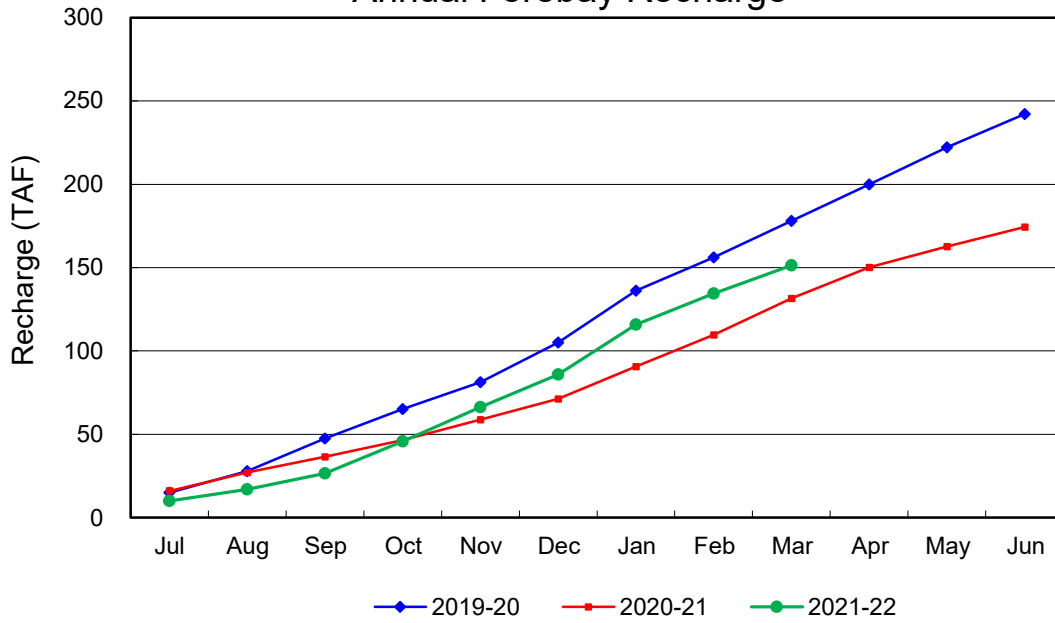
Annual Groundwater Production



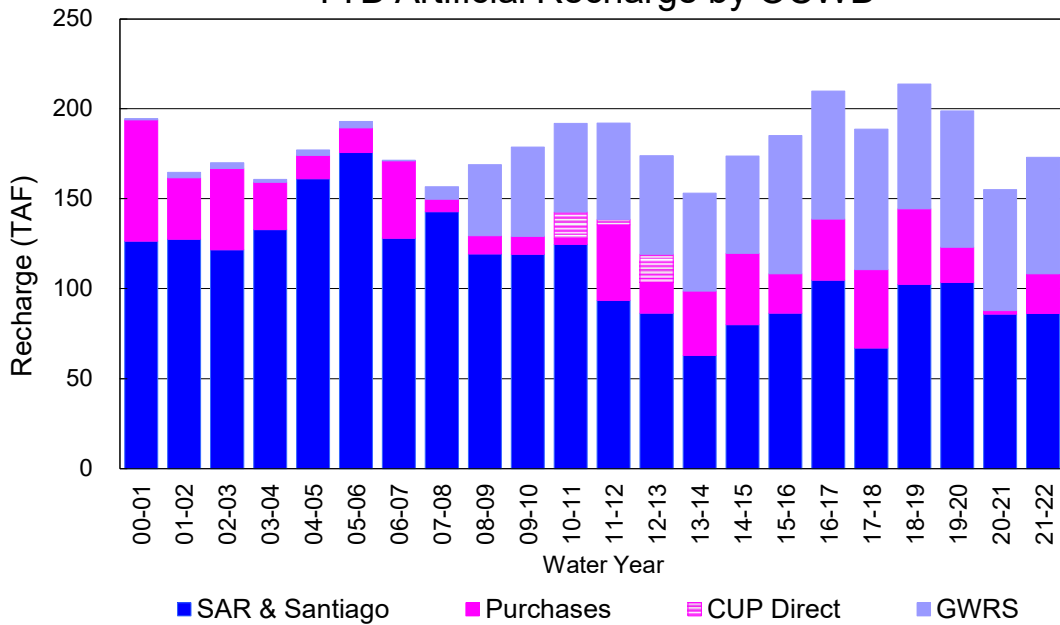
YTD Total Demand in OCWD



Annual Forebay Recharge



YTD Artificial Recharge by OCWD



RECHARGE AREAS REPORT

March 2022

	Percolation (AF)	Remarks
RIVER SYSTEM	5,323	87 cfs per day average perc
DESILTING SYSTEM	na	SAR
OFF-RIVER SYSTEM	473	
WARNER SYSTEM	789	SAR
OLIVE BASIN	na	Passive System
ANAHEIM LAKE	22	SAR
MINI-ANA LAKE	0	
MILLER BASIN	332	SAR
KRAEMER BASIN	75	SAR
LA PALMA BASIN	4,596	GWRS
MIRA LOMA	1,322	GWRS
LA JOLLA BASIN	177	
PLACENTIA BASIN	na	
RAYMOND BASIN	0	
FIVE COVES BASIN	na	
BURRIS BASIN	887	SAR
RIVER VIEW BASIN	0	
FLETCHER BASIN	8	
SANTIAGO BASINS	2,913	
SANTIAGO CREEK	0	
TOTALS	16,917	
5-YR AVERAGE	22,104	

FLOWS TO RECHARGE AREAS (AF)	
Imperial Headgates (estimated)	8,733
GWRS	5,941
OC-28 (MWD)	0
OC-28a (MWD)	0
OC-59	0
Est'd local Forebay inflow below Imperial	75
Est'd local Santiago inflow (estimated)	179
Irvine lake releases (OC-13 MWD)	0
Villa Park Dam releases (estimated)	0
Precip at Warner Basin (inches)	0.80
Precip direct to open water surfaces	46
TOTAL INFLOW	14,975

LOSSES FROM RECHARGE AREAS (AF)	
Est'd SAR flow past Chapman Ave.	75
Est'd Santiago Cr. flow to SAR	46
Est'd flows past Raymond Basin	0
Calc'd evap (inches) Estimated	3.68
Est'd evaporative losses	214
TOTAL LOSSES	335

STORAGE CHANGES (AF)			
Facility	Begin	End	Net
Deep basins	6,439	6,978	539
Santiago Pits	10,325	7,509	-2,816
River			
Off-river			
Irvine Lake			
TOTAL	16,764	14,487	-2,277

SUMMARY (AF)	
TOTAL INFLOW	14,975
TOTAL LOSSES	335
STORAGE CHANGE	-2,277
CALC'D PERCOLATION	16,917

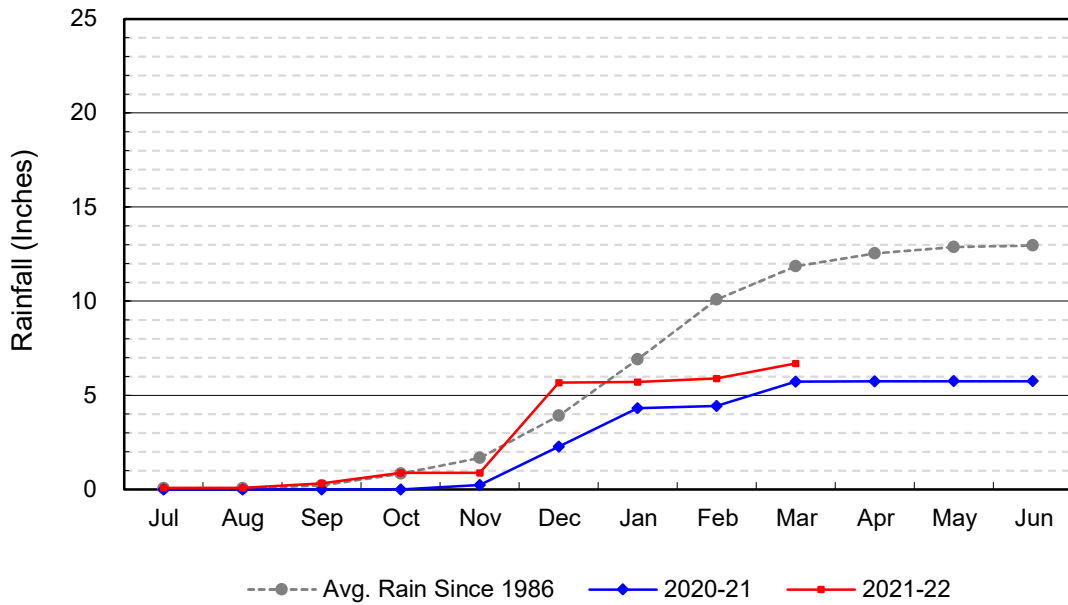
DEEP BASINS MONTHLY STATUS

March 2022

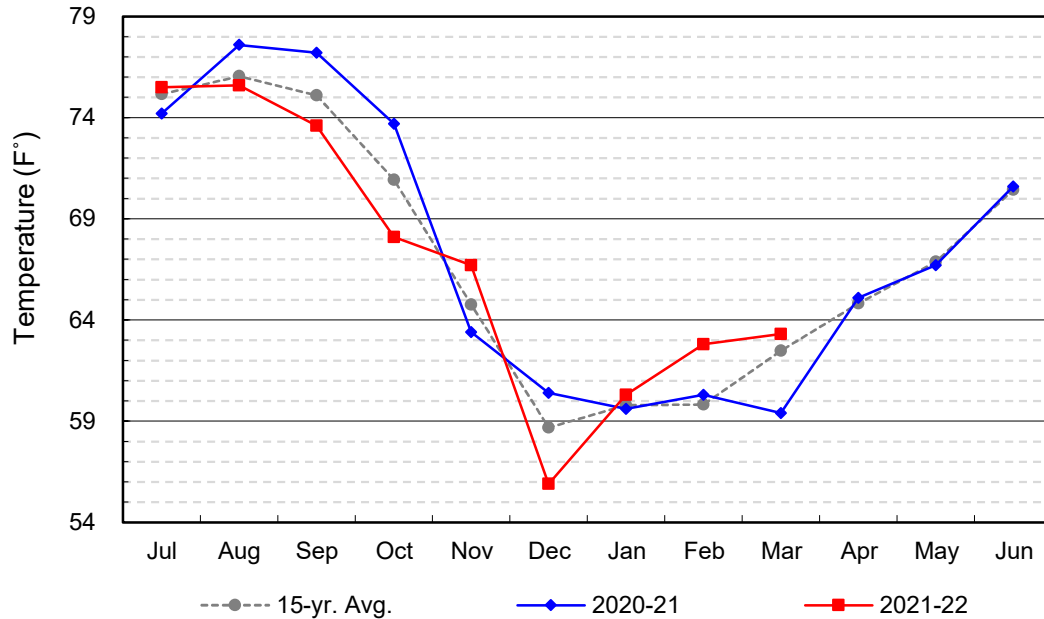
(values in acre-feet)

<i>Facility</i>	<i>Storage Start</i>	<i>Storage End</i>	<i>Maximum Storage</i>	<i>Total Perc</i>	<i>Max Perc</i>	<i>Avg Perc</i>	<i>Avg W.S. Elev</i>
Desilting Ponds	230	230	252	na	na	na	na
Fos-Huckleberry	529	557	628	na	na	na	na
Conrock Basin	550	578	661	na	na	na	na
Warner Basins	2,898	2,848	2,900	789	na	na	238
Olive Pit	55	33	95	na	na	na	194
Anaheim Lake	217	0	2,300	22	14	1	173
Mini-Anaheim Lk	0	0	10	0	0	0	220
Miller Basin	6	42	350	332	36	11	203
Kraemer Basin	178	0	1,055	75	9	2	171
La Palma Basin	43	48	101	4,596	159	148	215
Mira Loma	21	36	53	1,322	63	43	217
La Jolla Basin	4	9	20	177	33	6	200
Placentia Basin	0	0	200	na	na	na	na
Raymond Basin	0	0	200	0	na	na	na
Five Coves Basins	257	260	329	na	na	na	na
Burriss Pit	1,451	2,335	2,500	887	45	29	166
River View Basin	0	0	8	0	0	0	187
Fletcher Basin	0	2	15	8	3	0	184
Santiago (Bond)	6,726	5,130	8,312	2,913	164	94	255
Santiago (Blu Dia)	3,599	2,379	5,259	-	-	-	-
Totals	16,764	14,487	25,247	11,121			
Prado Dam	5	783	20,000				

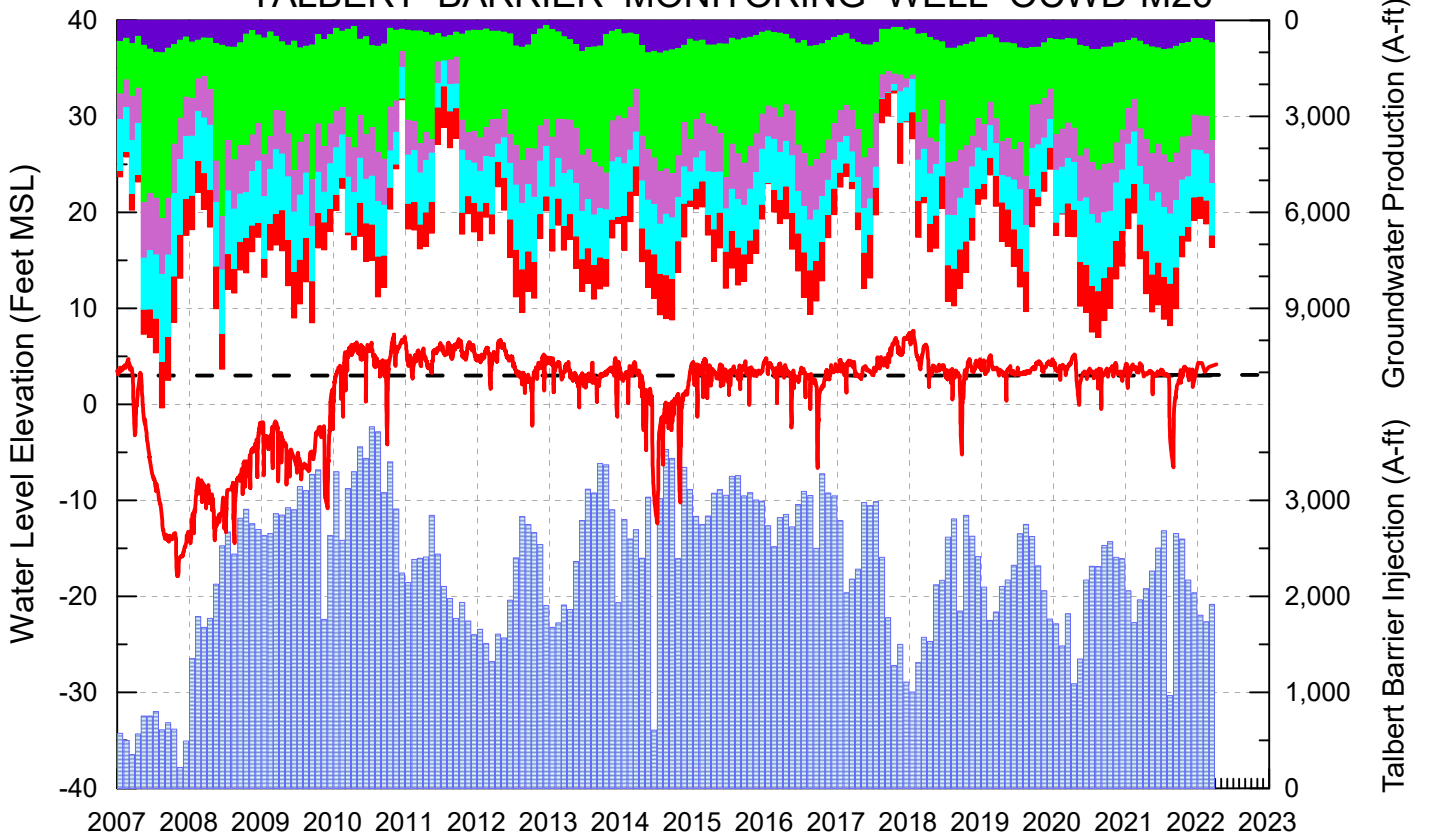
Cumulative Anaheim Field HQ Rainfall



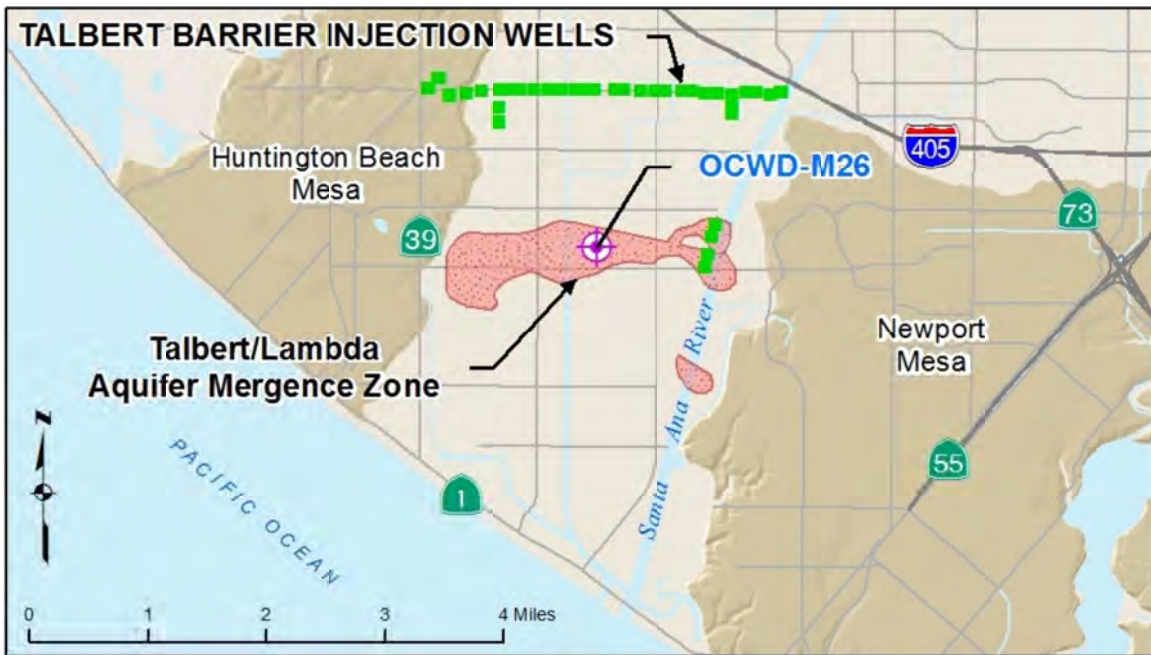
Temperature at Santa Ana Fire Station

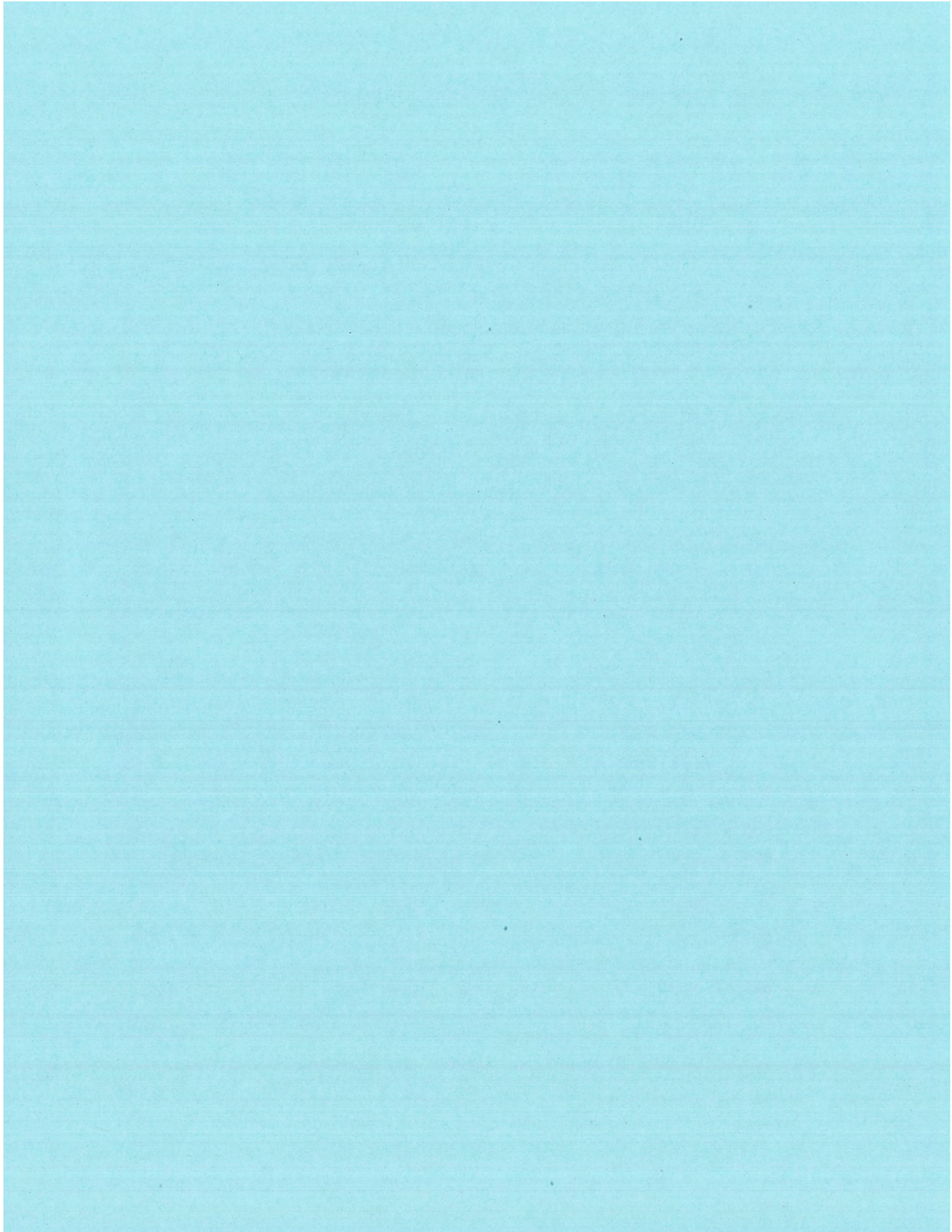


TALBERT BARRIER MONITORING WELL OCWD-M26



- Talbert/Lambda Aquifer Mergence Zone
Perforated Interval: 71 - 135 ft. bgs
- ▨ Talbert Barrier Injection
- Protective Level to Prevent Seawater Intrusion
- Fountain Valley Groundwater Production
- IRWD Groundwater Production
- Mesa Water Groundwater Production
- Huntington Beach Groundwater Production
- Newport Beach Groundwater Production





Daily Hydrologic and Climate Information Summary (05/05/2022)

Report generated: May 05, 2022 13:07

RESERVOIR STORAGE AS OF 05/04/2022 AT 11:59:59 PM							
RESERVOIR	RIVER	Storage (in Acre Feet)	% Capacity	% Average	Storage Year Ago This Date	% Capacity Year Ago This Date	% Average Year Ago This Date
Trinity Lake	Trinity	761,390	31	40	1,307,259	53	68
Shasta Lake	Sacramento	1,812,389	40	47	2,260,050	50	59
Lake Oroville	Feather	1,934,112	55	70	1,482,618	42	54
New Bullards Bar Res	Yuba	827,667	86	101	580,484	60	71
Folsom Lake	American	793,705	81	108	363,111	37	49
New Melones Res	Stanislaus	919,848	38	62	1,450,780	60	97
Don Pedro Res	Tuolumne	1,293,714	64	83	1,368,746	67	88
Lake McClure	Merced	415,137	41	68	438,196	43	72
Millerton Lake	San Joaquin	367,469	71	98	224,094	43	60
Pine Flat Res	Kings	508,710	51	84	342,892	34	56
San Luis Res	(Offstream)	952,112	47	58	1,018,637	50	62
Terminus	Kaweah	94,994	51	97	49,694	27	51
Success	Tule	30,127	37	69	18,888	23	44
Isabella	Kern	72,204	13	31	92,167	16	40

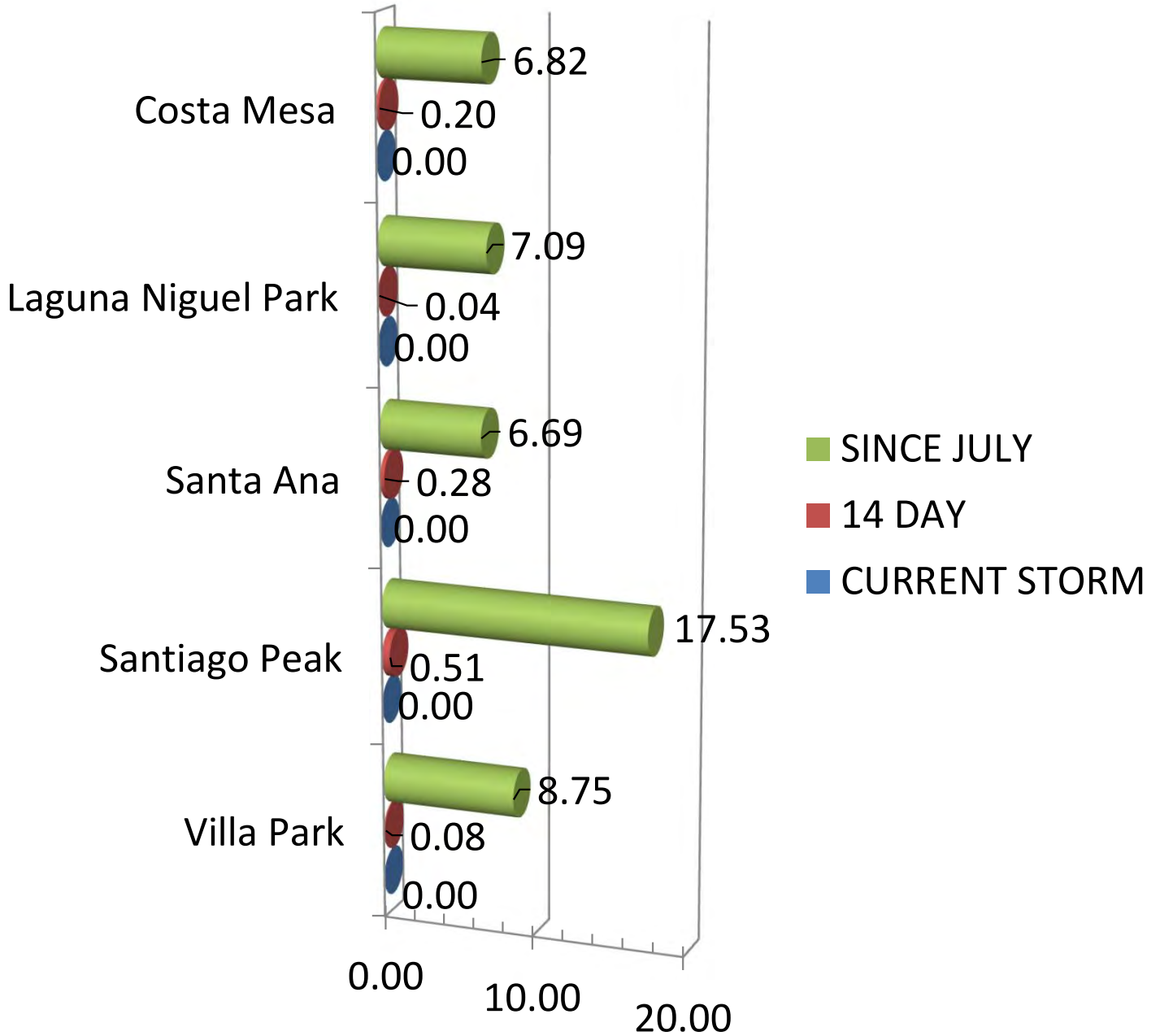
SNOWPACK WATER CONTENT AS OF 05/05/2022					
Region	Water Content (in inches)	% Average to Date	% of Apr 1 Average	Water Content (in inches) Last Year This Date	% Average Last Year This Date
Northern Sierra	4.70		26	2.10	12
Central Sierra	7.00		31	4.10	19
Southern Sierra	2.60		14	1.80	10
Statewide	5.20		27	2.80	14

PRECIPITATION INDEX ACCUMULATION AS OF 05/05/2022				
Index	Season to Date	% Average to Date	Season to Date Last Year	% Average Last Year
Northern Sierra	39.25		80	22.85
Southern Sierra	24.29		66	18.20
Tulare Basin	16.03		61	9.59

DAILY PRECIPITATION (IN INCHES) FOR SELECTED STATIONS AS OF 05/05/2022					
Station	Oct 1 to Date 2021-2022	% Average	Season to Date 2020-2021	% Average Last Year	% Average Oct 1 - Sep 30
Mount Shasta	17.49	45	13.67	35	40
Eureka	21.51	58	21.22	57	53
Redding	17.56	56	12.13	39	51
South Lake Tahoe	17.97	104	8.09	47	88
Sacramento Executive Airport	16.44	94	6.30	36	89
Santa Rosa (Sonoma Co AP)	23.65	68	10.92	32	65
San Francisco	17.55	77	8.33	37	74
Stockton	9.75	74	7.74	58	69
Yosemite	4.65	13	13.78	40	12
Monterey	10.28	67	7.20	47	64
Paso Robles	8.46	69	6.50	53	66
Fresno	6.29	58	6.04	56	55
Bakersfield	5.32	87	2.53	41	82
Death Valley	0.65	35	0.34	18	28
Los Angeles	11.44	80	5.51	38	77
Riverside	4.61	39	3.25	28	37
Palm Springs	1.50	32	0.68	15	26
San Diego	5.98	60	2.92	29	58

Orange County Rainfall Report

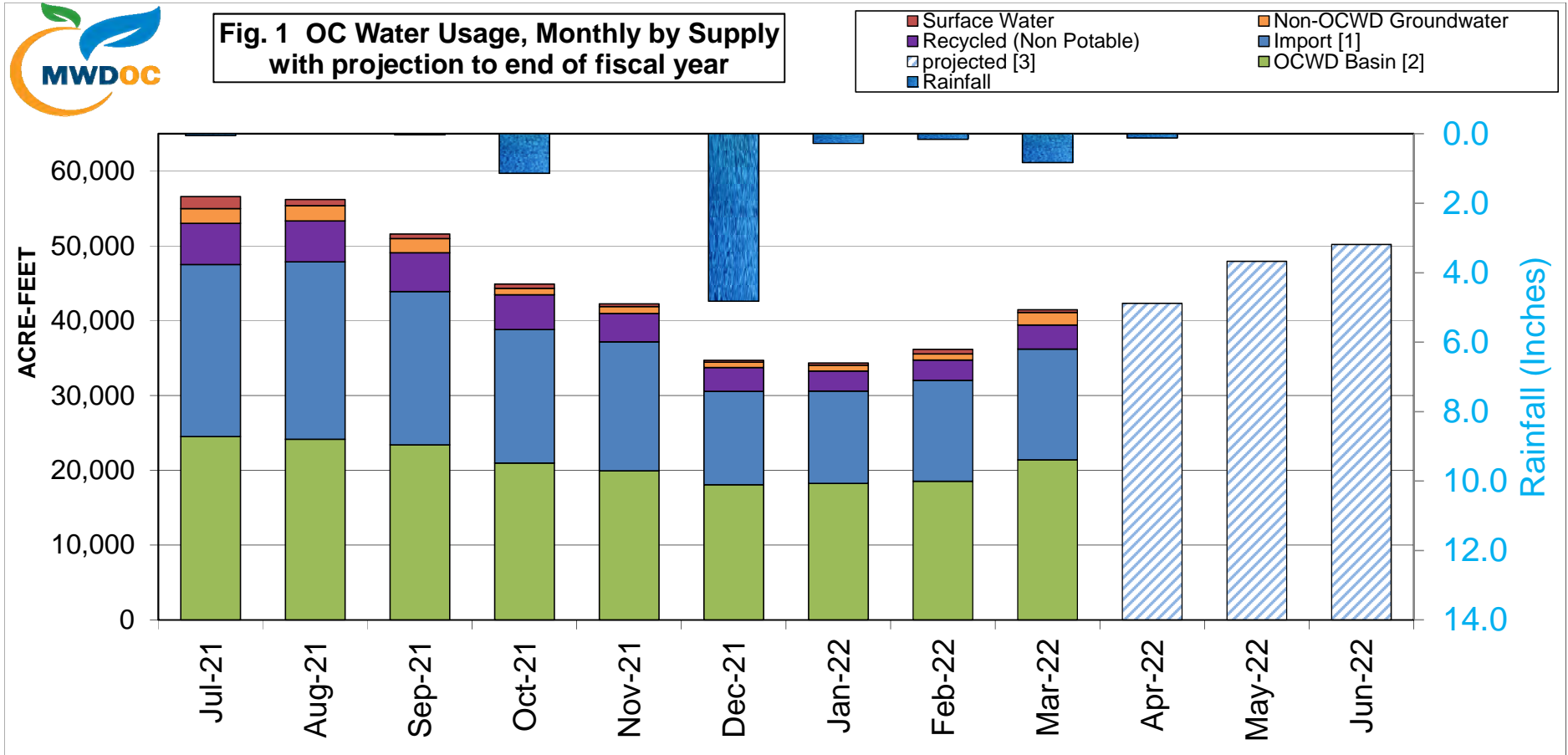
May 5, 2022



MWDOC WATER SUPPLY DATA



Fig. 1 OC Water Usage, Monthly by Supply with projection to end of fiscal year



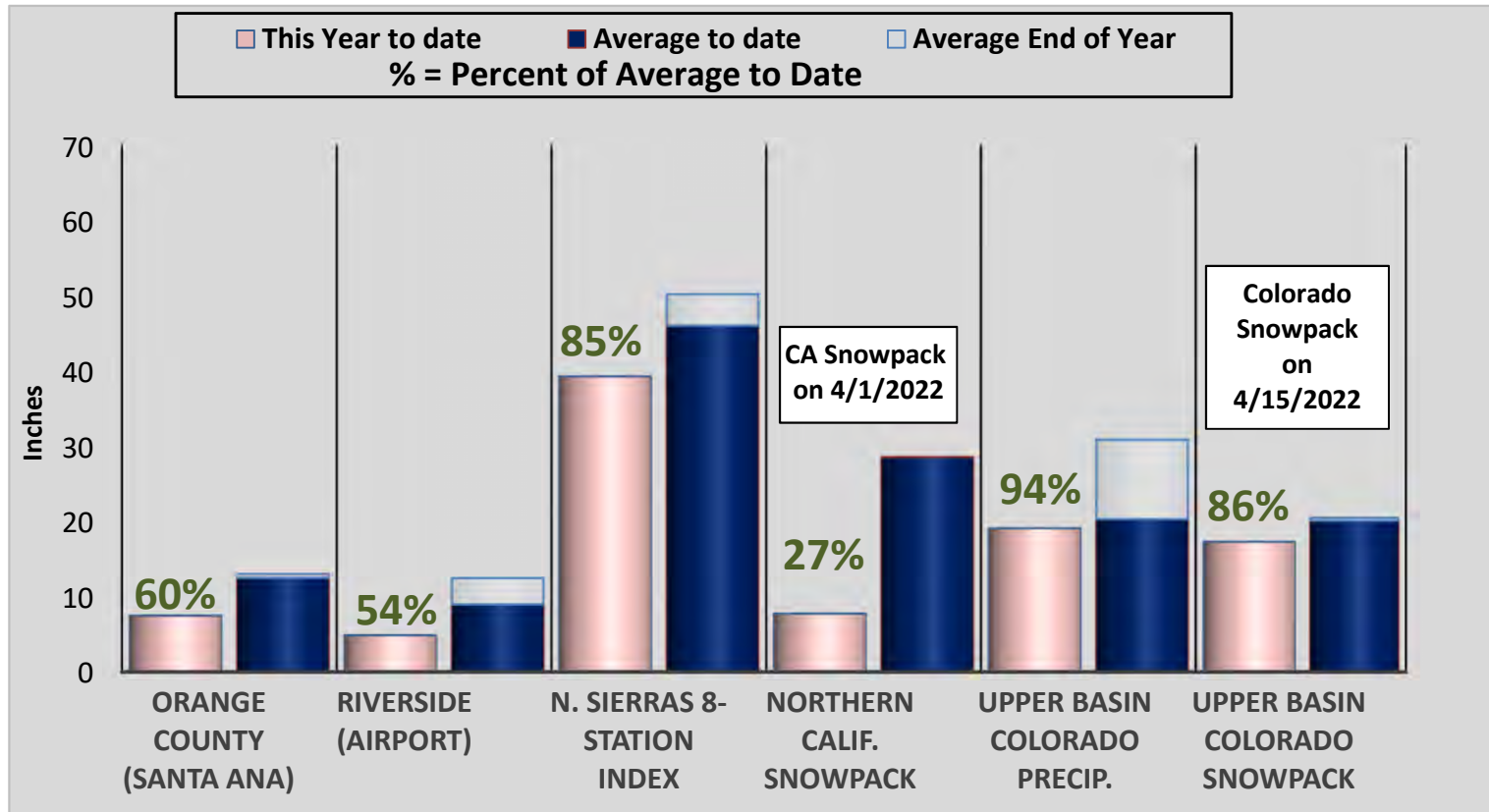
[1] Imported water for consumptive use. Includes "In-Lieu" deliveries and CUP water extraction. Excludes "Direct Replenishment" deliveries of spreading water and deliveries into Irvine Lake.

[2] GW for consumptive use only. Excludes In-Lieu water deliveries and CUP water extraction that are counted with Import. BPP in FY '21-22 is 77%.

[3] MWD OC's estimate of monthly demand is based on the projected 5 Year historical retail water demand and historical monthly demand patterns.

[4] Total water usage includes IRWD groundwater agricultural use and usage by non-retail water agencies.

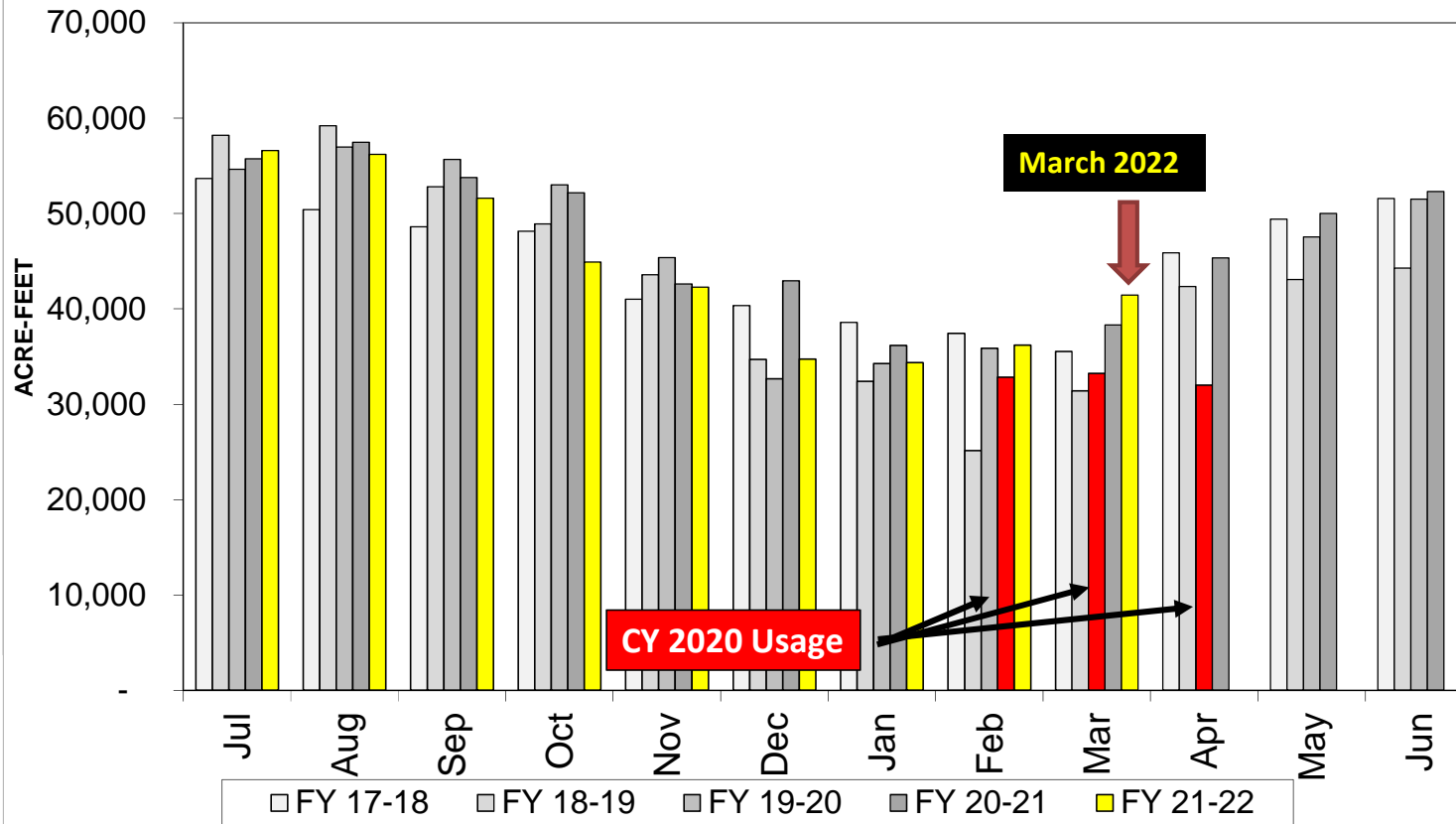
Accumulated Precipitation for the Oct.-Sep. water year, early May 2022



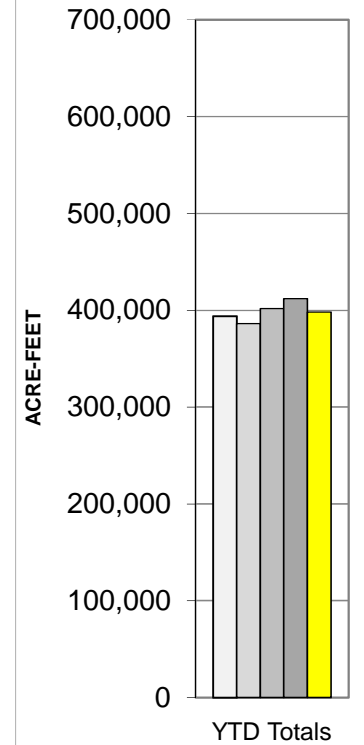
* The date of maximum snowpack accumulation (April 1st in Northern Calif. , April 15th in the Upper Colorado Basin) is used for year to year comparison.



Fig. 2 OC Monthly Water Usage [1]: Comparison to Last 4 Fiscal Years

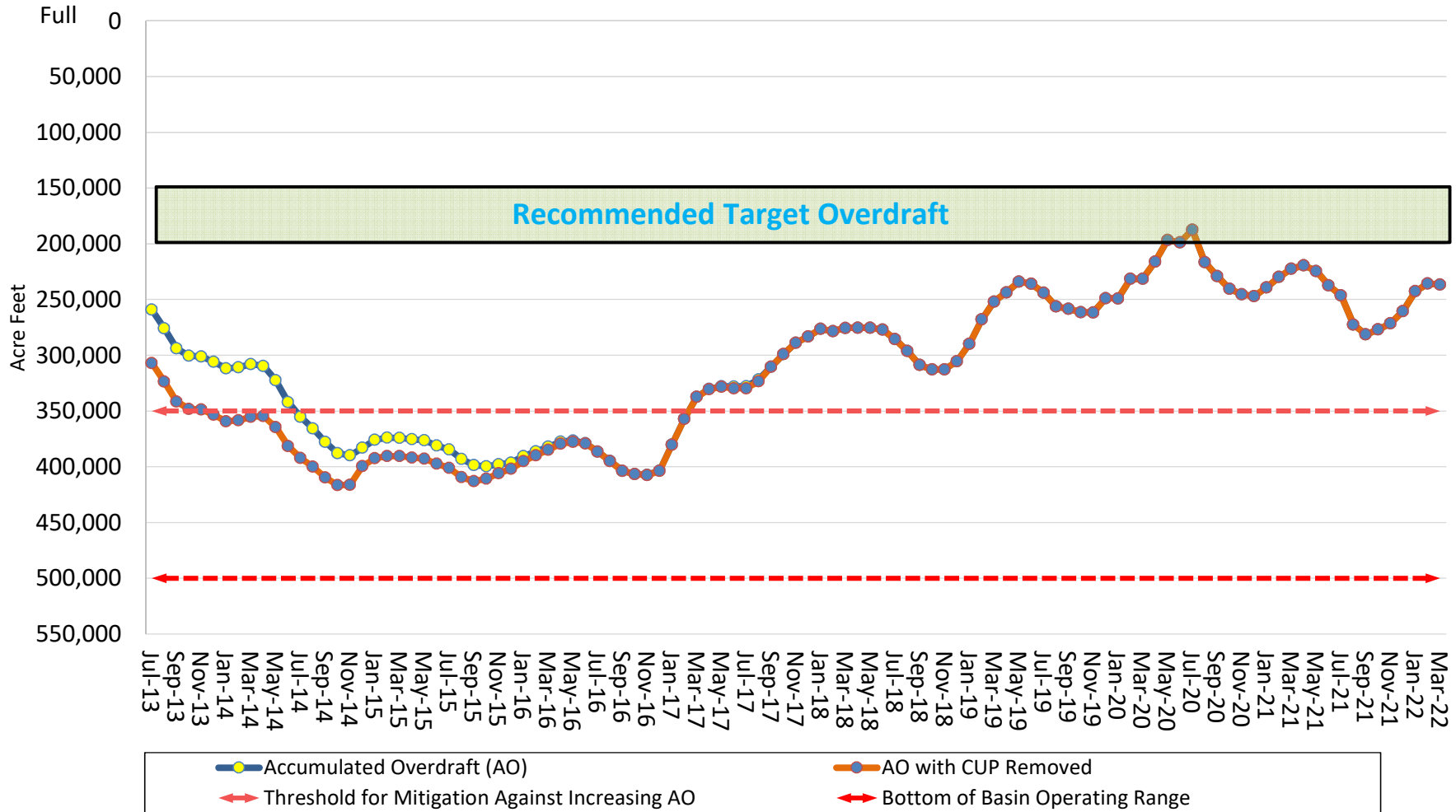


Partial Year Subtotals



[1] Sum of Imported water for consumptive use (includes "In-Lieu" deliveries; excludes "Direct Replenishment" and "Barrier Replenishment") and Local water for consumptive use (includes recycled and non-potable water and excludes GWRS production) Recent months numbers include some estimation.

Accumulated Overdraft of the OCWD Groundwater Basin as of March 2022



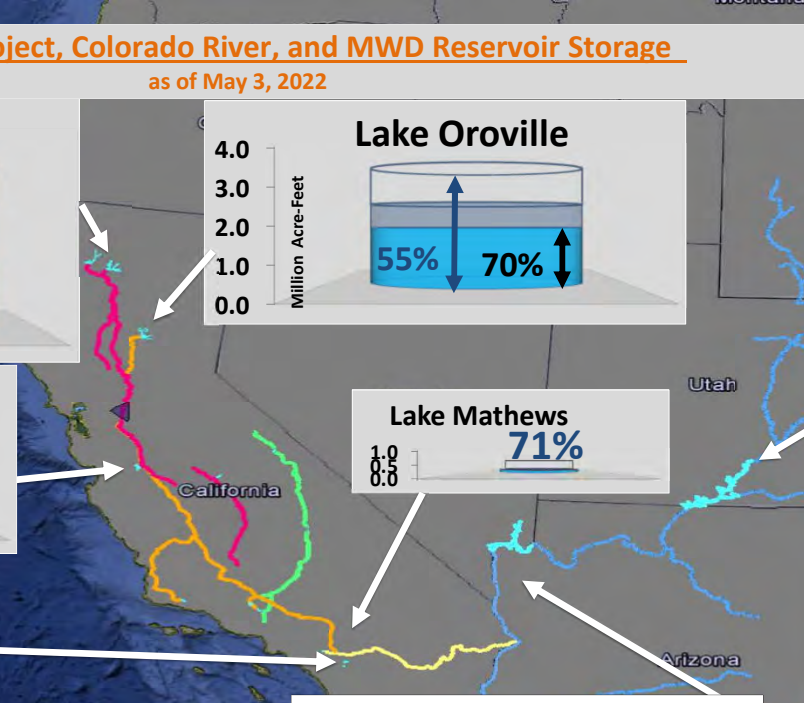
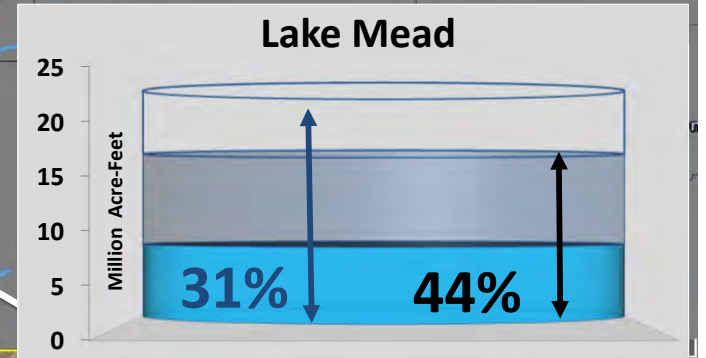
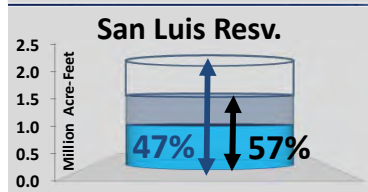
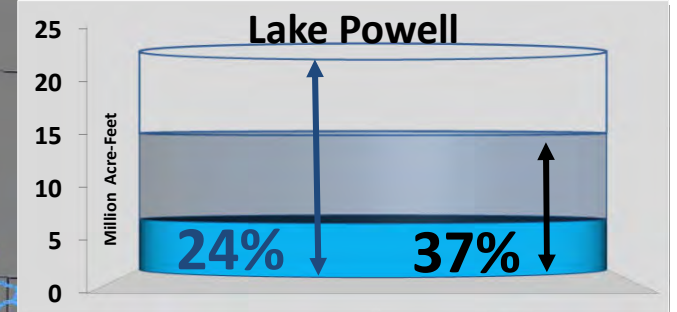
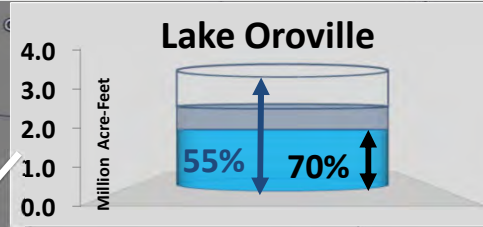
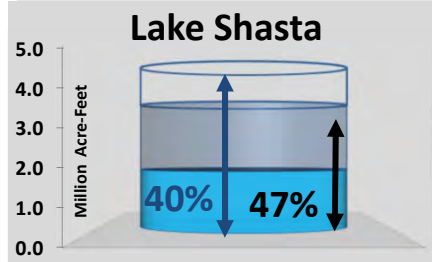
	Jul-20	Aug-20	Sep-20	Oct-20	Nov-20	Dec-20	Jan-21	Feb-21	Mar-21	Apr-21	May-21	Jun-21
AO (AF)	187,392	216,548	229,124	240,414	245,441	246,998	239,329	229,738	222,470	219,388	224,458	237,335
AO w/CUP removed (AF)	187,392	216,548	229,124	240,414	245,441	246,998	239,329	229,738	222,470	219,388	224,458	237,335
	Jul-21	Aug-21	Sep-21	Oct-21	Nov-21	Dec-21	Jan-22	Feb-22	Mar-22	Apr-22	May-22	Jun-22
AO (AF)	246,350	272,443	281,354	276,909	271,455	260,387	242,511	235,744	236,708			
AO w/CUP removed (AF)	246,350	272,442	281,354	276,909	271,455	260,387	242,510	235,744	236,708			

* Source ~ OCWD Monthly Board of Directors Packet, Water Resources Summary



State Water Project, Colorado River, and MWD Reservoir Storage

as of May 3, 2022



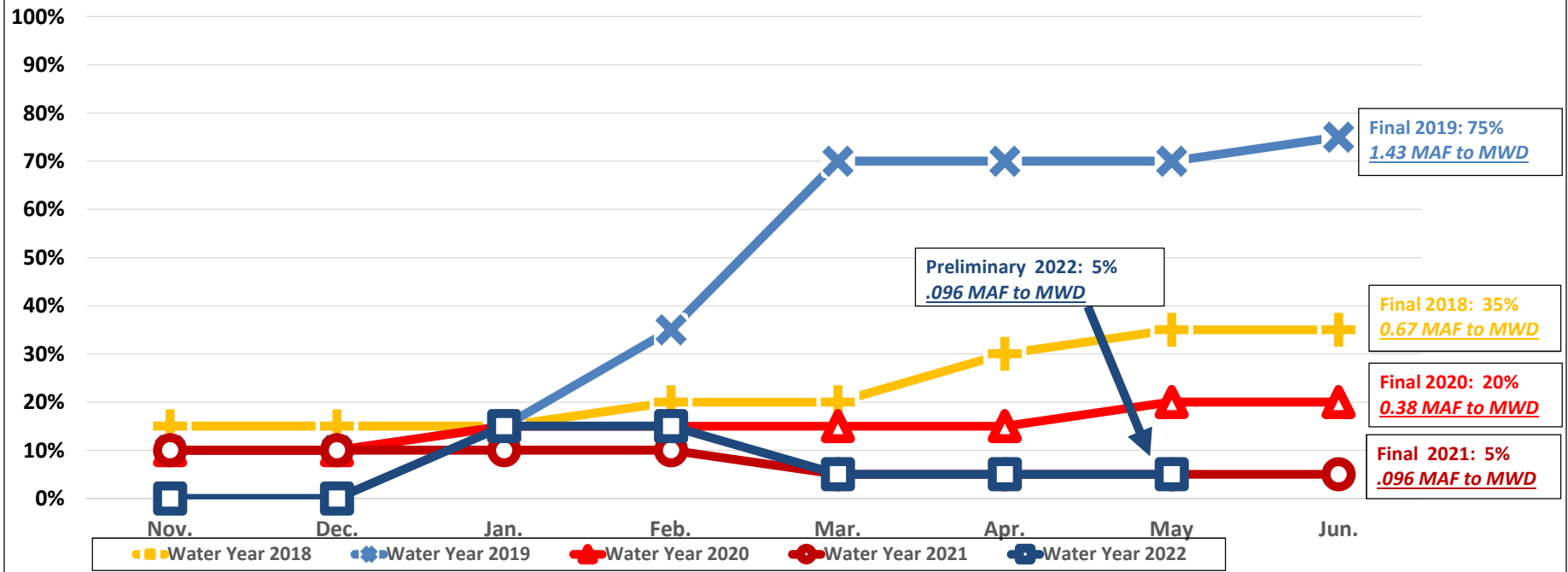
Reservoir Storage (Blue)
Historical Reservoir Storage (Grey)

SWP Take Capacity = 0.184 MAF
CRA Take Capacity = 0.347 MAF
In Region Take Capacity = 0.426 MAF

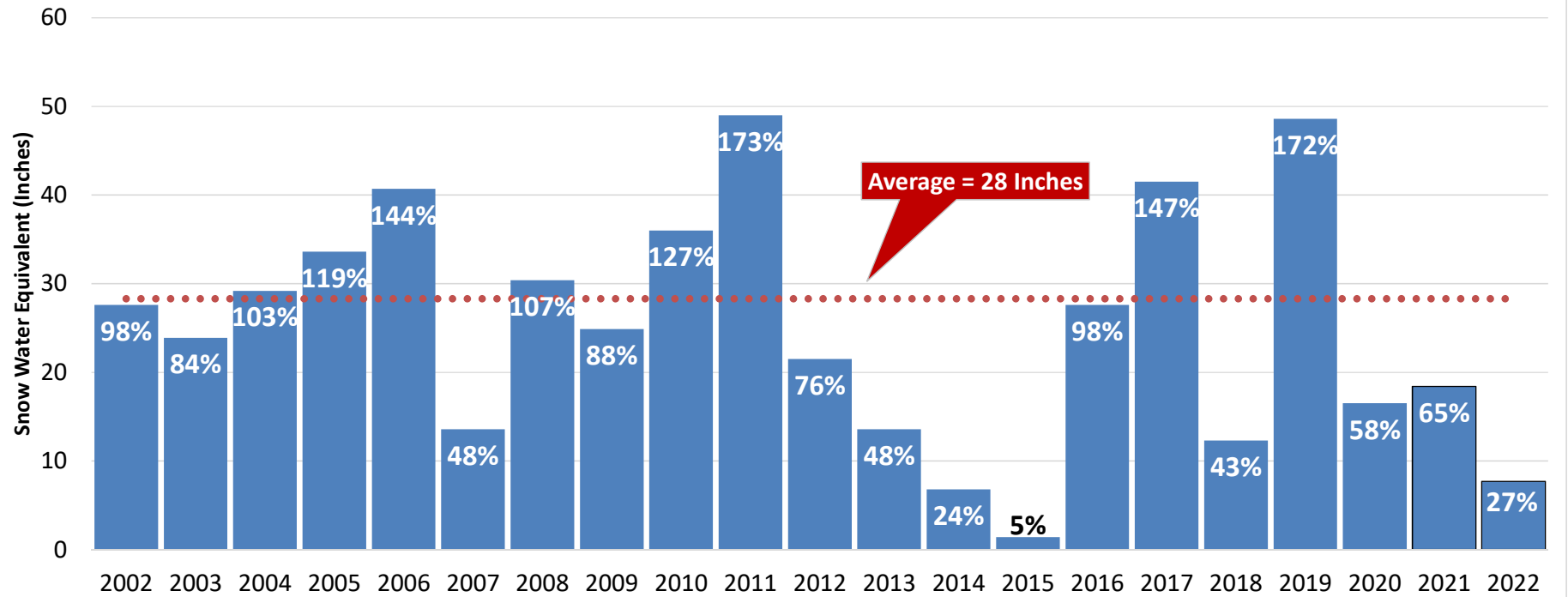


SWP TABLE A ALLOCATION PERCENTAGE

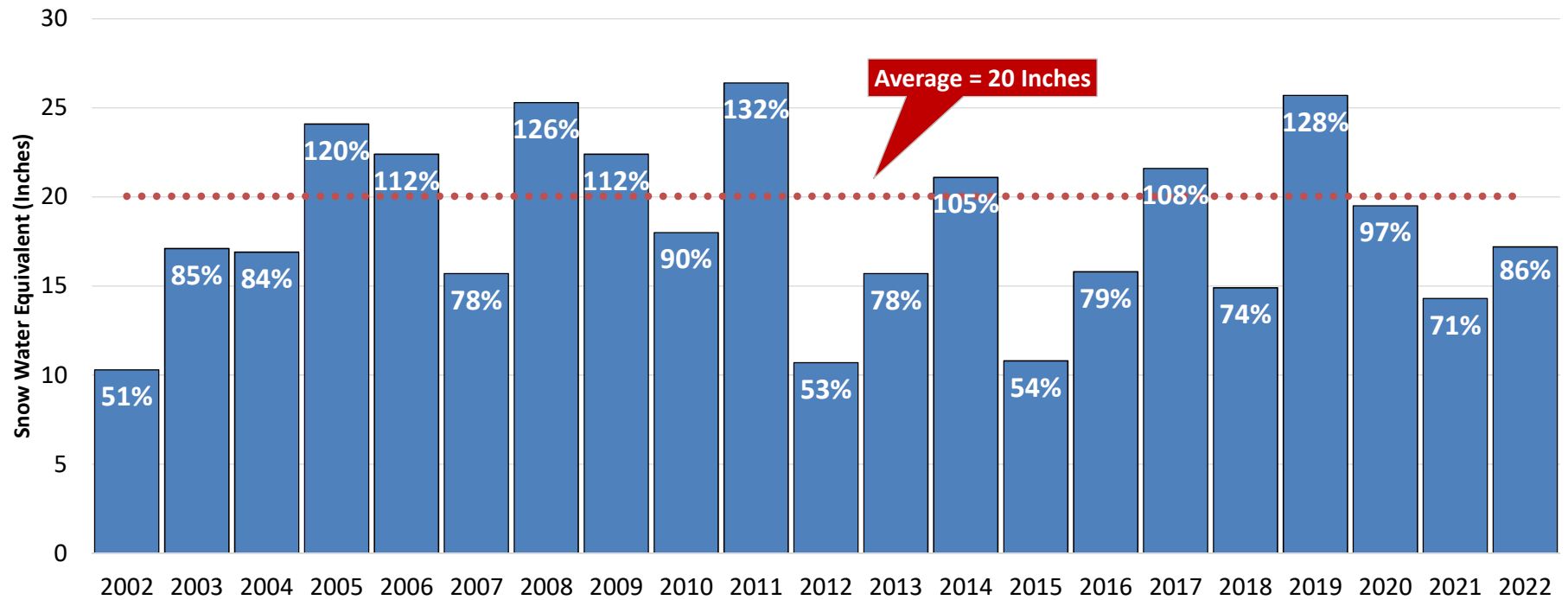
FOR STATE WATER PROJECT CONTRACTORS



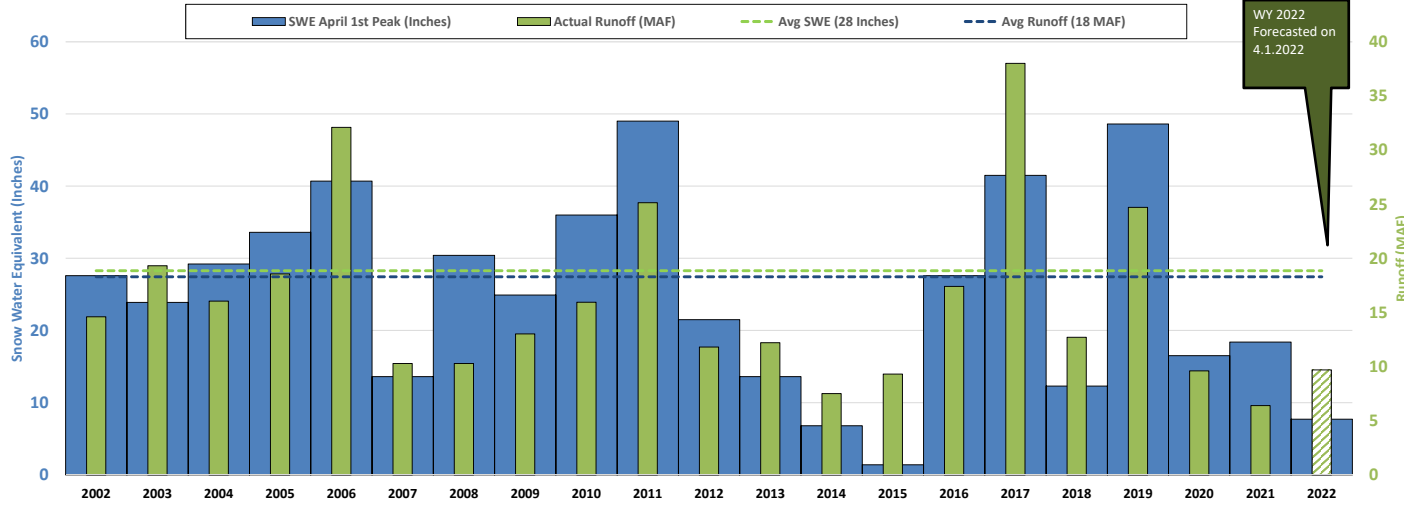
Historical Northern California April 1st Peak Snow Water Equivalent



Historical Colorado Basin April 15th Peak Snow Water Equivalent



Northern California Historical Snow Water Equivalent (Inches) Vs Runoff (Million AF)

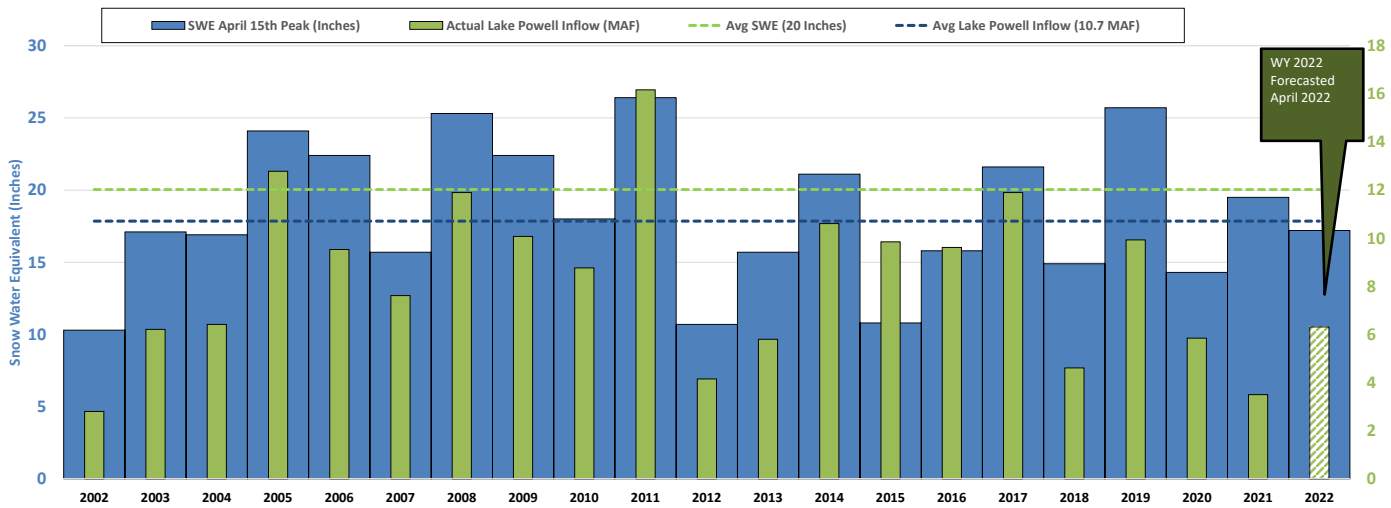


WY 2022
Forecasted on
4.1.2022

Sacramento River Basin



Upper Colorado Historical Snow Water Equivalent (Inches) Vs Runoff (Million AF)



WY 2022
Forecasted
April 2022

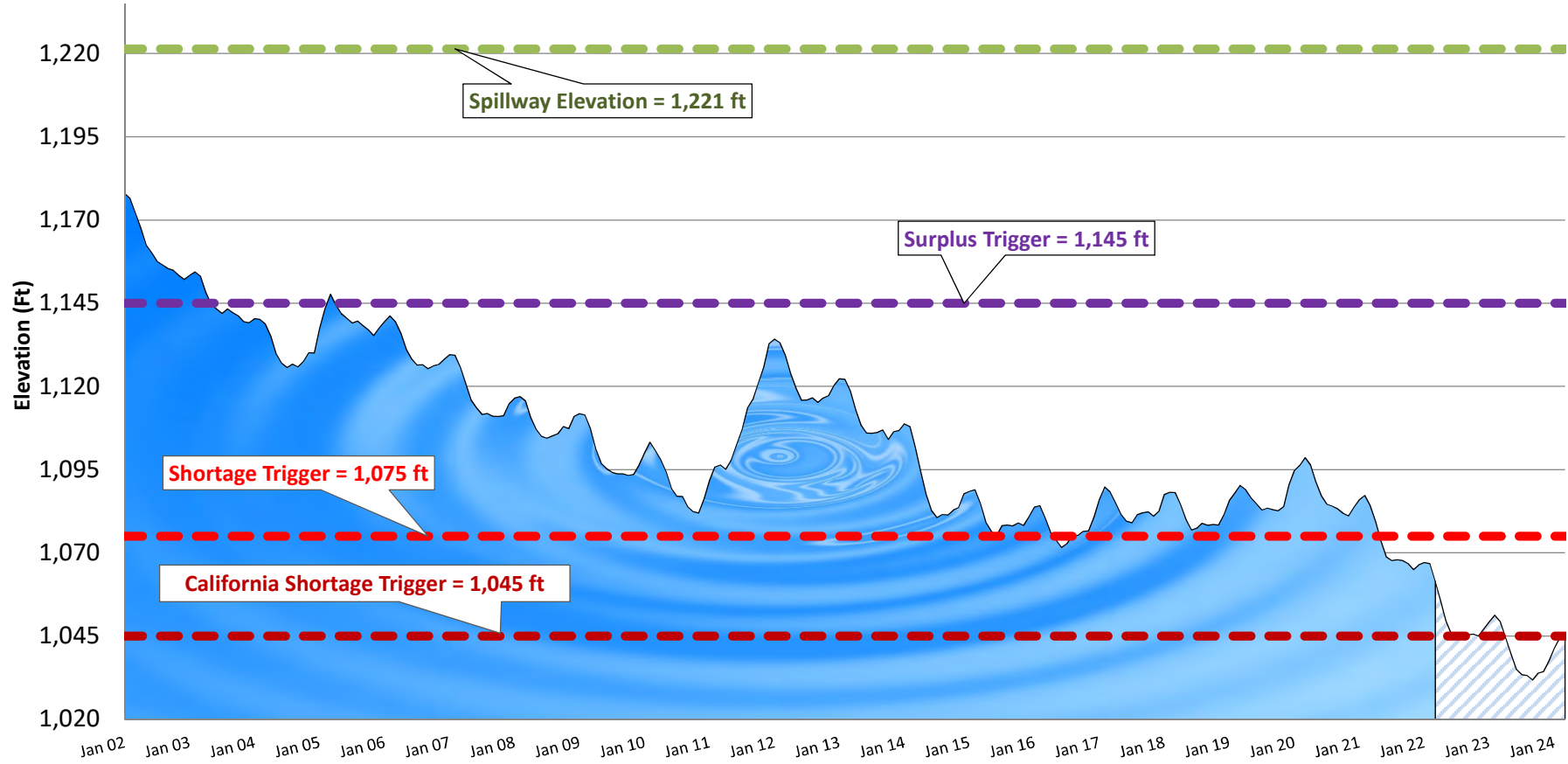
Colorado River Basin



Lake Mead Levels: Historical and Projected projection per USBR 24-Month Study

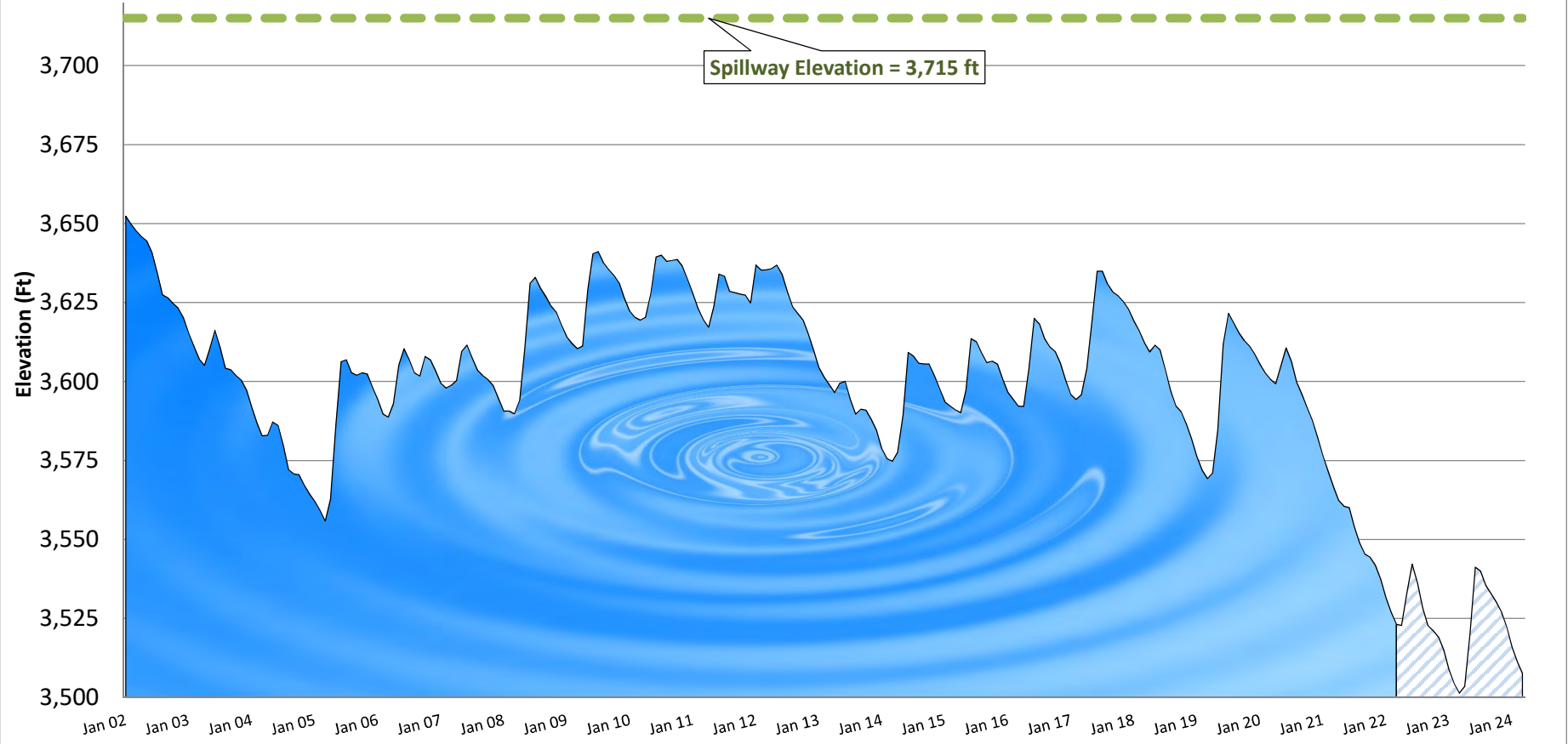


Projected
Historical



Lake Powell Levels: Historical and Projected projection per USBR 24-Month Study

■ Historical □ Projected



Lake Mead Historical Water Elevation Level

