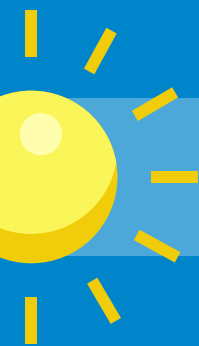


# 10 TIPS FOR A WILDFIRE DEFENSIBLE SPACE

..... *In Your Home Garden* .....



1

## ASSESS YOUR RISK

Plan a leaner, drought tolerate palette with open space and less-crowded vegetation to reduce the risk of fuel spreading.

2

## CREATE A WATER-WISE FIRE-RESISTANT LANDSCAPE

Create islands of California-friendly vegetation and permeable hardscape such as pebble pathways, which also help with runoff.

3

## KNOW YOUR SPACE

Place highly flammable plants at least 30 feet away from your home. Steep slopes may require a greater distance.

4

## CHOOSE FIRE RESISTANT PLANTS

Low water use plants are less likely to dry up and ignite. Visit [www.mwdoc.com/waterandfirewiseplants](http://www.mwdoc.com/waterandfirewiseplants) for our list of water-efficient AND fire-resistant plants!

5

## WATER WISELY

Overwatering promotes excessive growth, which decreases protective spacing between plants.

6

## WATER SMART

Irrigate with rainwater and use drip irrigation at night or in the early morning to reduce evaporation.

7

## MAINTENANCE IS KEY

Clear branches at least 10 feet from your roof to prevent embers from igniting your home.

8

## SAY NO TO RESIN

High resin content trees, such as evergreens, are highly susceptible to burning. Opt for trees that shed their leaves seasonally like maple, poplar, and cherry trees.

9

## MATERIALS MATTER!

Consider replacing wooden decks and fencing with fireproof materials, such as stone, concrete, or metal.

10

## REDUCE ROOF VULNERABILITY

Remove downed plant material from the roof and block openings between the roof deck and roofing materials.

