

# WEROC

Mitigation, Preparedness, Response, and Recovery



WATER IS ESSENTIAL TO LIFE. THE WATER EMERGENCY RESPONSE ORGANIZATION OF ORANGE COUNTY (WEROC) ENSURES THAT ORANGE COUNTY COMMUNITIES ARE COVERED IN THE EVENT OF A DISASTER.



## WATER EMERGENCY RESPONSE ORGANIZATION OF ORANGE COUNTY

Established in 1983 and administered by the Municipal Water District of Orange County (MWDOC), WEROC helps Orange County water and wastewater agencies prepare for, and respond to, natural disasters, infrastructure failures, and domestic threats. Central to WEROC's emergency response is its Emergency Operations Center (EOC) located in south Orange County. The WEROC program is a proven emergency preparedness and response model that has been replicated by water and wastewater agencies across the state. WEROC is a recognized contributor of the Environmental Protection Agency, introducing the Water Desk Position to be implemented in Emergency Operations Centers nationwide.



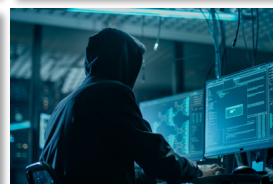
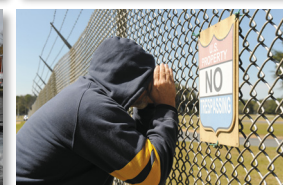
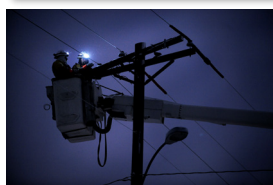
SERVING **3.2 MILLION** ORANGE COUNTY RESIDENTS, SUPPORTING **3,000** WATER AND WASTEWATER EMPLOYEES, AND ASSISTING **37** ORANGE COUNTY AGENCIES.

## 7 WEROC FUNDING AGENCIES



## THREATS TO WATER SUPPLY

NATURAL DISASTERS • EARTHQUAKES • MAIN BREAKS  
HEALTH EMERGENCIES • FIRES • MAN-MADE DISASTERS  
POWER OUTAGES • SUPPLY OUTAGES • CYBER ATTACKS  
UNKNOWN CONTAMINANTS • SUSPICIOUS ACTIVITIES



## IMPACTS TO CRITICAL INFRASTRUCTURE FROM LOSS OF WATER SERVICES

Sector or Facility Type	% Dependent upon Water	% / Backup or Alternate Water Source	% / Contingency Plan	% / Priority Restoration Plan for Water
Chemicals and Hazardous Materials	100	25	31	15
Commercial Facilities	94	5	16	16
Defense Industrial Base	93	0	29	21
Electric Generation	82	35	50	39
Emergency Services	75	10	21	33
Financial Services	90	27	18	13
Food and Agriculture	82	43	16	13
Government Facilities	96	7	21	23
Hospitals	98	49	55	65
Manufacturing	93	26	27	20
Transportation	83	0	0	1

WEROC is the **Region I Coordinator** for the **California Water/Wastewater Agency Response Network (CalWARN)**, which supports and coordinates statewide disaster response and mutual assistance processes for public and private water and wastewater utilities in Southern California and statewide.



## EMERGENCY RESPONSE

SINCE **2020**, WEROC HAS RESPONDED TO, AIDED WITH, OR CONDUCTED THE FOLLOWING :

**19** EVENTS AND INCIDENTS, **3** EMERGENCY OPERATION CENTER ACTIVATIONS, **27** TRAINING COURSES AND EXERCISES, **20** REGIONAL WATER SPECIFIC PLANS REVIEWED AND REVISED, **84** BI-WEEKLY CONFERENCE CALLS PROVIDING UPDATES FOR COVID-19, AND **320,000** PIECES OF PERSONAL PROTECTIVE EQUIPMENT DISTRIBUTED TO MEMBER AGENCIES.

Over the course of the past 15 years, all areas of the nation have seen a rise in natural and man-made disasters. Orange County, California is no different. WEROC responded to, and supported recovery efforts for 16 Federally Declared Disasters and 2 California Disaster Assistance Act Events in Orange County. Moreover, this figure does not include the multitude of smaller events requiring Emergency Coordination efforts.

## EMERGENCY OPERATIONS CENTER

WEROC's Emergency Operations Center (EOC) is a permanent, turn-key facility that coordinates response and recovery efforts between water and wastewater agencies, the County of Orange, and the California Governor's Office of Emergency Services. During a large-scale disaster, the WEROC EOC activates to ensure effective communication and coordination between government agencies. This includes developing and distributing accurate, timely, systemized messaging to keep the public up-to-date on critical safety information.



## CRITICAL WEROC EOC FUNCTIONS

- 1 NEXUS BETWEEN THE COUNTY AND WATER AGENCIES
- 2 CENTRALIZED, COORDINATED COMMUNICATIONS
- 3 DAMAGE ASSESSMENT REPORTING
- 4 WATER SUPPLY SYSTEM ASSESSMENT
- 5 COORDINATE MUTUAL AID
- 6 COORDINATE REPAIRS AND WATER DISTRIBUTION

WEROC IS **1 of 5** OPERATIONAL AREA MUTUAL AID COORDINATORS IN ORANGE COUNTY, SERVING ALONGSIDE LAW ENFORCEMENT, FIRE & RESCUE, PUBLIC WORKS, AND HEALTH CARE.

WEROC serves as the Operational Area Water/Wastewater Mutual Aid Coordinator and is the point of contact between local water and wastewater agencies, regional water agencies, and the County of Orange along with state and federal partners.