



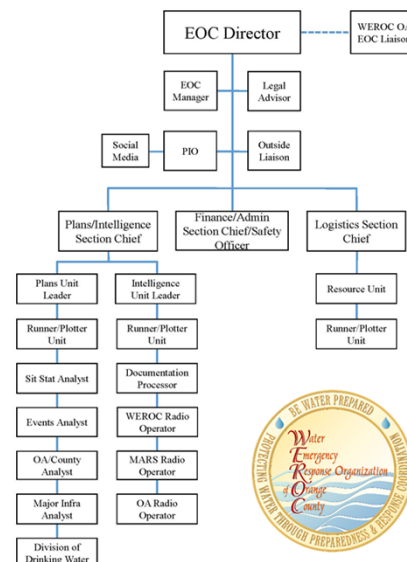
## South Emergency Operations Center

EOC Design Analysis  
4.2021

## WEROC Responsibilities

WEROC is organized on the basis that each member agency is responsible for developing its EOP following SEMS, NIMS, and America's Water Infrastructure Act to meet specific emergency needs within its service area. In turn, WEROC will coordinate the exchange of resources and information for member agencies, and when necessary, for MET, the Orange County Operational Area, and other appropriate outside agencies. In the event of a major regional disaster, WEROC would perform but not limit itself to the following functions:

- Assess overall condition of the water supply system, including availability, quantity, and quality of MET and member agency water supplies
- Assess overall condition of the wastewater collection systems, including operability of treatment systems
- Identify resource and coordination needs of member agencies
- Collect Initial Damage Estimate (IDE) reports and support recovery
- Quantify available Mutual Aid and private resources and secure as necessary
- Request resources
- Determine optimal use of resources
- Establish response and repair priorities
- Recommend water allocation schemes, if required
- Maintain liaison with MET, OA EOC, and outside agencies
- Organize staging area and assignments for volunteer personnel;
- Maintain EOC security and access control;
- Provide for relief and necessities of response for EOC personnel.
- Keep Senior and Elected Officials Informed



# Basis for Making this Decision



- WERO Site Assessment Report 2016
- ASTM International E-2668-10 Standard Guide for EOC Development
- FEMA Emergency Operations Center Assessment Checklist
- FEMA EOC Design Assessment Checklist
- NFPA Standards
- FEMA CPG-101
- NIMS
- WERO Director of EM Experience

Dept. of Defense

Unified Facilities Command Sept. 2008



## EMERGENCY OPERATIONS CENTER PLANNING AND DESIGN

- a. Operations Room – minimum 40 sf per seat
- b. Command Conference Room – minimum 25 sf per seat
- c. Breakout rooms (4-8 people) – minimum 25 sf per seat
- d. Info & Planning Rooms – minimum 40 sf per seat
- e. GIS Room – minimum 150 sf
- f. Communications room – minimum 80 sf
- g. Kitchen/Dining area – minimum 16 sf per seat
- h. Restroom – minimum 60 sf per fixture

## Facility Design Criteria and Requirements

### Space for Operational Capability

- Reception Area
- Operations Room
- Policy Group/Business Continuity/Breakout Conference Room
- Planning and Intelligence/Situation/Breakout Room
- PIO Room
- Communications/Radio Room
- Kitchen
- Supply/Storage
- Restroom/Shower/locker room

- **Dedicated vs EOC in a Box**
- **Survivability**
- **Accessibility/Security**
- **Sustainability**
- **Interoperability**



- **Site Accessibility and Building Security**
- **Building Systems**
- **Emergency Power**
- **Technology**
- **Situational Awareness Displays & GIS**
- **IT and Support Equipment**
- **Emergency Food and Water**

## Size of WEROC South EOC based on Guidance and Published EOC Facilities Design Reports

### Unified Facilities Command Guidance

	Prelim Design	WEROC UFC Equivalent	Staff
Entry	340	333	
Women RR/Locker	230	140	4
Men RR/Locker	230	140	4
Utilities	150	150	
Storage	250	150	
Server	100	80	
Main Room	1134	840	21
Command Conf Rm		275	11
Breakout	100	200	8
Breakout	100	200	8
PIO Room	200	160	4
Business Continuity	200	80	2
Comm Room	250	250	3
Break/Kitchen	250	128	8
	3,534	3,126	30

### Colorado

#### Summit County EOC

	WEROC Equivalent
Reception	80
Ops Room	1680
Policy Conf Room	600
Director Office/Conf Room	400
Media Room	200
Comms Room	160
Kitchen	128
Bunk Room	200
Storage	150
Shower/Locker/Restrooms	300
No Utility Room	
No Entryway	
	<b>3,898</b>

### Washington State EOC

280 square feet per staff

For 30 staff = **8,400 sf**

## County EOC Like for Like Comparison

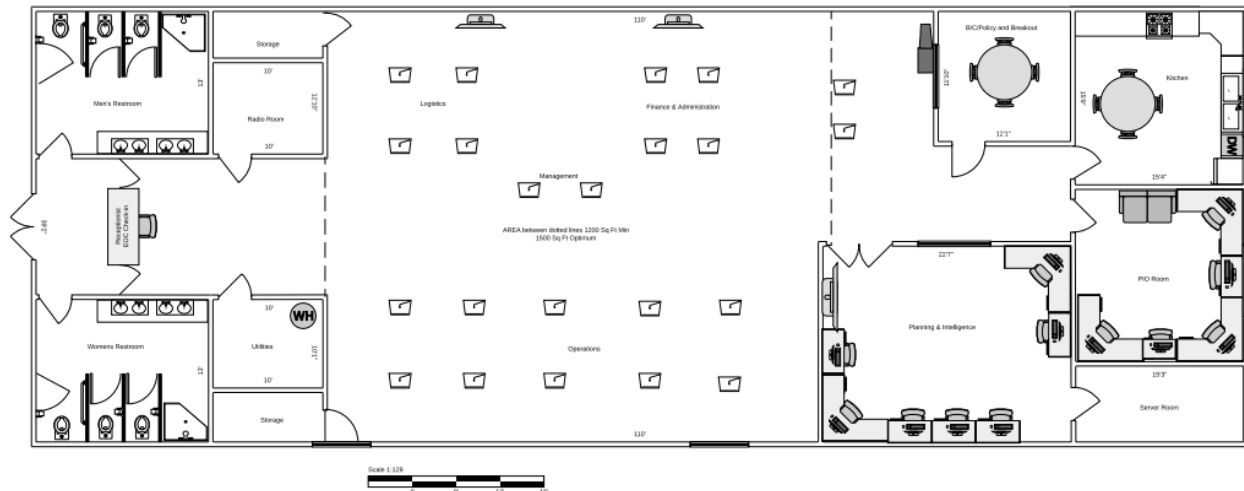


- Support Center 1554 sf (during an activation- average 30 people occupy this room)
- Admin Office 253 sf (Meeting/breakout room)
- Utilities Closet (electrical panel, fire riser, etc) 251 sf
- Server/telecom/AV Room 126 sf
- Radio room equipment and operator space 319 sf
- Restroom/locker room 468 sf
- Storage room 1 - 171 sf
- Storage room 2 - 191 sf
- Kitchen area 228 sf

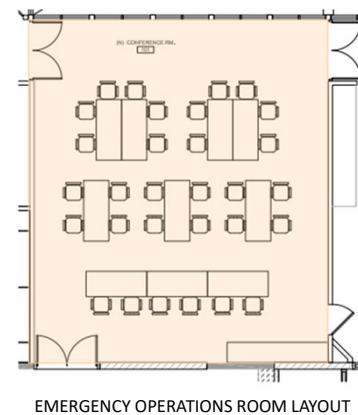
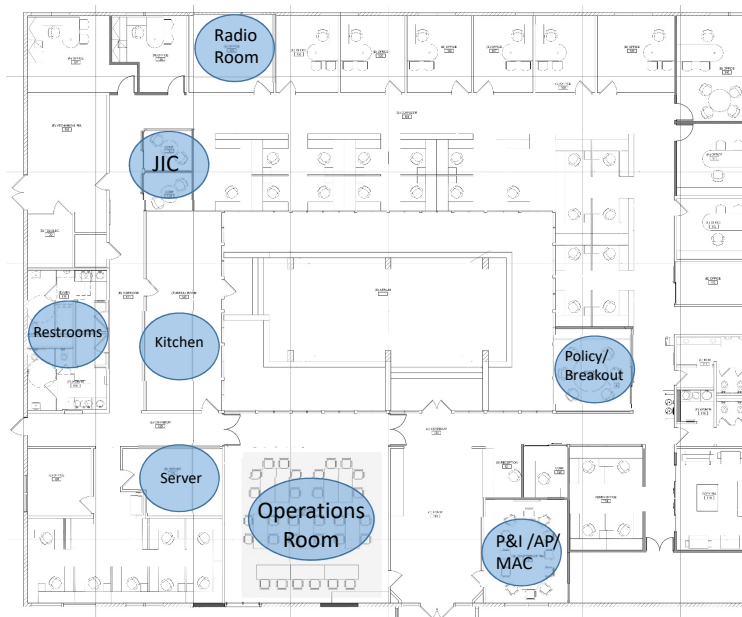
Total – **3,561 sf**



## South EOC – New Building Design (3,265 S.F.)



## MWDOC Building EOC Concept



# Baker Treatment Plant Option

- Not a viable option based on the analysis of the location and capabilities



9

## IRWD Community Center Analysis



- Pros/Cons
- Operational Challenges

Analysis of IRWD Sand Canyon Community Room		
Operational Need/Function	Yes	No
<b>Facility Features/Flexibility</b>		
Reception Area		
Operations Floor space of 1500 sf min		
Communication/Radio Room		
Policy Group/BC/Breakout Conference Rooms		
P&I/Situation Room		
Kitchen		
Shower/Lockerroom		
Supply/Storage		
<b>Accessibility/Sustainability</b>		
Risk Analysis Rating		
Security		
WEROC Access to location		
Storage for Food/Water Supplies		
Storage for Operational Items		
Back up Power		
<b>Communications/Networks</b>		
Internet Connection		
Network Capability		
MWDOC Server Space available		
AV Display multi points within room		
Radios		
Phone Lines		
ERNET & Satellite		
Dataports		
Electrical outlets		

10



