

DIRECTORS

DENIS R. BILODEAU, P.E.
JORDAN BRANDMAN
CATHY GREEN
NELIDA MENDOZA
DINA L. NGUYEN, ESQ.
KELLY E. ROWE, C.E.G., C.H.
STEPHEN R. SHELDON
TRI TA
BRUCE WHITAKER
ROGER C. YOH, P.E.



ORANGE COUNTY WATER DISTRICT
ORANGE COUNTY'S GROUNDWATER AUTHORITY

OFFICERS

President
STEPHEN R. SHELDON

First Vice President
CATHY GREEN

Second Vice President
TRI TA

General Manager
MICHAEL R. MARKUS, P.E., D.WRE

April 20, 2021

Mr. Sat Tamaribuchi
Board President
Municipal Water District of Orange County
18700 Ward Street
Fountain Valley CA 92708

SUBJECT: MWDOC Board Meeting Agenda Item No. 7

Dear Sat:

The Orange County Water District (OCWD) Board of Directors Executive Committee appreciates the opportunity to comment on the referenced item before the Municipal Water District of Orange County (MWDOC) Board regarding the South Emergency Operations Center (EOC) Capital Project. We ask that this item be pulled from the consent calendar so that discussion can occur.

We request that the MWDOC Board not move forward with building the proposed South EOC. We believe there needs to be a more careful consideration of this matter before an informed decision can be made.

The decision to move forward with the South EOC as the primary EOC was based on a 2016 Claris Study which ranked potential EOC locations. However much has changed since then and if the same criteria were used with current conditions the MWDOC Administration Building could rank as the primary EOC for the following reasons:

1. Hazard/Risks scoring could be increased since OCWD now has a guard manning the guard shack during office hours and is in the process of installing a fence along the perimeter of the site as well as installing a new site video system to mitigate potential terrorist hazards. Storm flood risk hazards are being mitigated by the U.S. Army Corps of Engineers (Corps) with completion of the spillway at Prado Dam, which is scheduled for by 2023. The Corps will soon be able to discharge its maximum design flow rate of 30,000 cubic feet per second to further mitigate flood risk.
2. Space functionality and Future Configurability scoring could be increased since the MWDOC building renovations have reconfigured Conference Room 101 and have modified the room by adding additional electrical and computer access outlets.

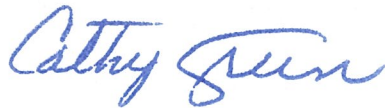
3. Infrastructure scoring could be increased since MWDOC has procured an emergency generator for the MWDOC Administration Building and has made improvements in its electrical system.
4. EOC Expense scoring could be increased since the costs for the MWDOC Administration Building improvements will be incurred upon completion of construction currently scheduled in October 2021.


It is our position that the MWDOC Administration Building should be used as the WEROC primary EOC and MWDOC should work with member agencies to see if any of their existing facilities could be used as the back-up EOC.

The decision that has been moved forward with the P&O Committees recommendation is premature at this time and could result in the unnecessary expenditure of member agencies funds. We encourage you to continue to seek the input of your member agencies including those that fund the WEROC operations.

Sincerely,


Stephen R. Sheldon
Board President


Cathy Green
1st Vice President


Tri Ta
2nd Vice President


Denis R. Bilodeau
Past President

Bcc: OCWD Board of Directors
Cc: OCWD Groundwater Producers



Street Address:
18700 Ward Street
Fountain Valley, California 92708

Mailing Address:
P.O. Box 20895
Fountain Valley, CA 92728-0895

(714) 963-3058
Fax: (714) 964-9389
www.mwdoc.com

Sat Tamaribuchi
President

Megan Yoo Schneider, P.E.
Vice President

Larry D. Dick
Director

Bob McVicker, P.E., D.WRE
Director

Al Nederhood
Director

Karl W. Seckel, P.E.
Director

Jeffery M. Thomas
Director

Robert J. Hunter
General Manager

MEMBER AGENCIES

City of Brea
City of Buena Park
East Orange County Water District
El Toro Water District
Emerald Bay Service District
City of Fountain Valley
City of Garden Grove
Golden State Water Co.
City of Huntington Beach
Irvine Ranch Water District
Laguna Beach County Water District
City of La Habra
City of La Palma
Mesa Water District
Moulton Niguel Water District
City of Newport Beach
City of Orange
Orange County Water District
City of San Clemente
City of San Juan Capistrano
Santa Margarita Water District
City of Seal Beach
Serrano Water District
South Coast Water District
Trabuco Canyon Water District
City of Tustin
City of Westminster
Yorba Linda Water District

April 20, 2021

Mr. Steve Sheldon
Board President
Orange County Water District (OCWD)
18700 Ward Street
Fountain Valley, CA 92708

Dear Steve,

We appreciate receiving OCWD's Executive Committee's comments and recommendations regarding the proposed South Emergency Operations Center (EOC) project in your letter dated April 20, 2021. Your letter has been shared with the MWD OC Board of Directors and I asked MWD OC staff to review your comments.

Your letter refers to the information and discussions from MWD OC's Planning and Operations (P&O) Committee of April 5, 2021 and requests that the MWD OC Board of Directors not move forward with the South EOC Project, provide a more careful consideration of the project, and utilize the MWD OC Administration Building as the WEROC primary EOC. Our organizations have exchanged two sets of comment letters and responses since that date but additional information, discussions, and meetings have also been ongoing over those two weeks and are important factors in MWD OC's decisions.

These issues were discussed in depth at the April 19, 2021 Administration and Finance (A&F) Committee meeting. It is my understanding that that no OCWD Directors were able to attend that virtual committee meeting but I am attaching the PowerPoint presentation that was made by Vicki Osborn (WEROC Director of Emergency Management). That presentation addressed in detail the alternative facility proposals from Member Agencies. The proposed facilities were not found to be acceptable alternatives to the South EOC.

The 2016 Claris Study was only one of the factors in the decision to use the MWD OC Administrative Building as the secondary EOC. Numerous documents in addition to the experience and expertise of the Director of Emergency Management were used, including input from member agencies. The liquefaction zone at the Administration Building site is also a major factor. As indicated in our previous response, the Administration Building has never been proposed as the Primary EOC.

MWD OC staff has reviewed and rescored the Claris Study based on the factors you cite, the investment in the entire MWD OC Administrative Building, the proposed South EOC and other factors. The result was that while the scoring changes, the proposed South EOC still is the superior and preferred alternative. The response to the four points you raise include:

Mr. Steve Sheldon
April 20, 2021
Page 2

1. Hazard Risk scoring - We agree the flooding threat has improved for the MWDOC Admin Building based on the scheduled Prado Dam spillway work and the downstream Santa Ana River Project (SARP) levee and riverbed improvements by the OC Flood Control District (OCPW). However, our rescoring also included other risks not considered in the original Claris Study such as nearby hazardous materials within a 1-mile radius. Therefore, the scoring did not materially improve. Security for the MWDOC Admin building already had the highest possible weight.
2. Space Functionality and Future Configurability scoring – The rescoring did include the improvement to Room 101 as you suggested and it did increase the score. However, the response and recovery phases of emergency response can last weeks or months. The dedicated use of the South EOC simply scores, and performs, better than a facility with multi-use demands.
3. Infrastructure scoring – We agree that MWDOC's actions to obtain a backup power generator and switch gear improves the Administration Building infrastructure score. However, the 2016 Claris Study did not take into consideration the HVAC system and the accessibility of the emergency damper controls to MWDOC staff. This dependency could be a life safety issue during a hazardous materials release or during smoke advisories raising the PM particle pollution.
4. EOC Expense scoring – We agree that the Administration Building improvements are a changed condition from the 2016 study and could increase the score. Our review and rescoring also addressed the increased labor and maintenance costs associated with additional training on EOC setup, training, and testing of EOC equipment from storage to ensure operability.

After careful consideration of this matter the MWDOC committees have agreed that the MWDOC Administration Building should not be the primary EOC and that the recommendation is not premature. The alternative sites do not match the performance of the proposed South EOC. The item has been discussed at a number of public meetings where we actively request input and comment from the public and our Member Agencies. The South County EOC is scheduled for final discussion and a Board vote at tomorrow's MWDOC Board of Directors meeting.

Sincerely,



Sat Tamaribuchi
Board President

cc: MWDOC Board of Directors
OCWD Board of Directors
Robert Hunter, MWDOC GM
Vicki Osborn, WEROC Director of Emergency Management



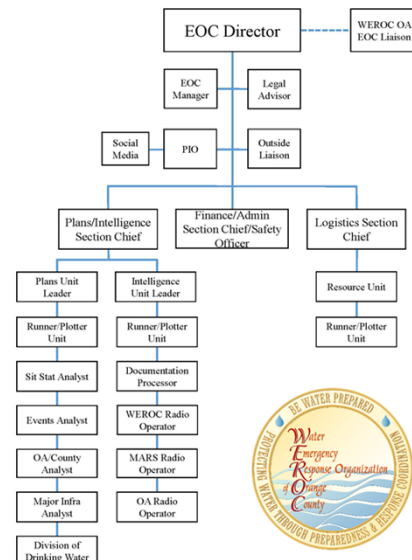
South Emergency Operations Center

EOC Design Analysis
4.2021

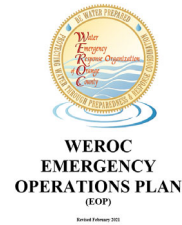
WEROC Responsibilities

WEROC is organized on the basis that each member agency is responsible for developing its EOP following SEMS, NIMS, and America's Water Infrastructure Act to meet specific emergency needs within its service area. In turn, WEROC will coordinate the exchange of resources and information for member agencies, and when necessary, for MET, the Orange County Operational Area, and other appropriate outside agencies. In the event of a major regional disaster, WEROC would perform but not limit itself to the following functions:

- Assess overall condition of the water supply system, including availability, quantity, and quality of MET and member agency water supplies
- Assess overall condition of the wastewater collection systems, including operability of treatment systems
- Identify resource and coordination needs of member agencies
- Collect Initial Damage Estimate (IDE) reports and support recovery
- Quantify available Mutual Aid and private resources and secure as necessary
- Request resources
- Determine optimal use of resources
- Establish response and repair priorities
- Recommend water allocation schemes, if required
- Maintain liaison with MET, OA EOC, and outside agencies
- Organize staging area and assignments for volunteer personnel;
- Maintain EOC security and access control;
- Provide for relief and necessities of response for EOC personnel.
- Keep Senior and Elected Officials Informed



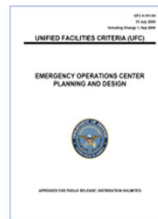
Basis for Making this Decision



- WERO Site Assessment Report 2016
- ASTM International E-2668-10 Standard Guide for EOC Development
- FEMA Emergency Operations Center Assessment Checklist
- FEMA EOC Design Assessment Checklist
- NFPA Standards
- FEMA CPG-101
- NIMS
- WERO Director of EM Experience

Dept. of Defense

Unified Facilities Command Sept. 2008



EMERGENCY OPERATIONS CENTER PLANNING AND DESIGN

- a. Operations Room – minimum 40 sf per seat
- b. Command Conference Room – minimum 25 sf per seat
- c. Breakout rooms (4-8 people) – minimum 25 sf per seat
- d. Info & Planning Rooms – minimum 40 sf per seat
- e. GIS Room – minimum 150 sf
- f. Communications room – minimum 80 sf
- g. Kitchen/Dining area – minimum 16 sf per seat
- h. Restroom – minimum 60 sf per fixture

Facility Design Criteria and Requirements

Space for Operational Capability

- Reception Area
- Operations Room
- Policy Group/Business Continuity/Breakout Conference Room
- Planning and Intelligence/Situation/Breakout Room
- PIO Room
- Communications/Radio Room
- Kitchen
- Supply/Storage
- Restroom/Shower/locker room

- **Dedicated vs EOC in a Box**
- **Survivability**
- **Accessibility/Security**
- **Sustainability**
- **Interoperability**



- **Site Accessibility and Building Security**
- **Building Systems**
- **Emergency Power**
- **Technology**
- **Situational Awareness Displays & GIS**
- **IT and Support Equipment**
- **Emergency Food and Water**

Size of WEROC South EOC based on Guidance and Published EOC Facilities Design Reports

Unified Facilities Command Guidance

	Prelim Design	WEROC UFC Equivalent	Staff
Entry	340	333	
Women RR/Locker	230	140	4
Men RR/Locker	230	140	4
Utilities	150	150	
Storage	250	150	
Server	100	80	
Main Room	1134	840	21
Command Conf Rm		275	11
Breakout	100	200	8
Breakout	100	200	8
PIO Room	200	160	4
Business Continuity	200	80	2
Comm Room	250	250	3
Break/Kitchen	250	128	8
	3,534	3,126	30

Colorado

Summit County EOC

	WEROC Equivalent
Reception	80
Ops Room	1680
Policy Conf Room	600
Director Office/Conf Room	400
Media Room	200
Comms Room	160
Kitchen	128
Bunk Room	200
Storage	150
Shower/Locker/Restrooms	300
No Utility Room	
No Entryway	
	3,898

Washington State EOC

280 square feet per staff

For 30 staff = **8,400 sf**

County EOC Like for Like Comparison

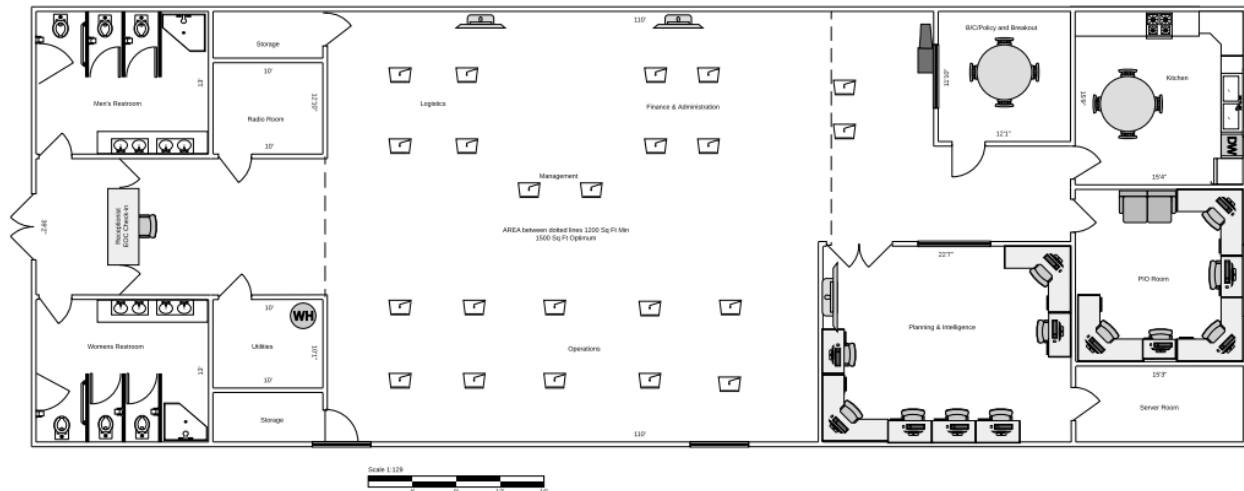


- Support Center 1554 sf (during an activation- average 30 people occupy this room)
- Admin Office 253 sf (Meeting/breakout room)
- Utilities Closet (electrical panel, fire riser, etc) 251 sf
- Server/telecom/AV Room 126 sf
- Radio room equipment and operator space 319 sf
- Restroom/locker room 468 sf
- Storage room 1 - 171 sf
- Storage room 2 - 191 sf
- Kitchen area 228 sf

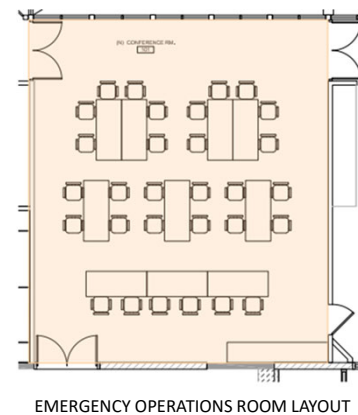
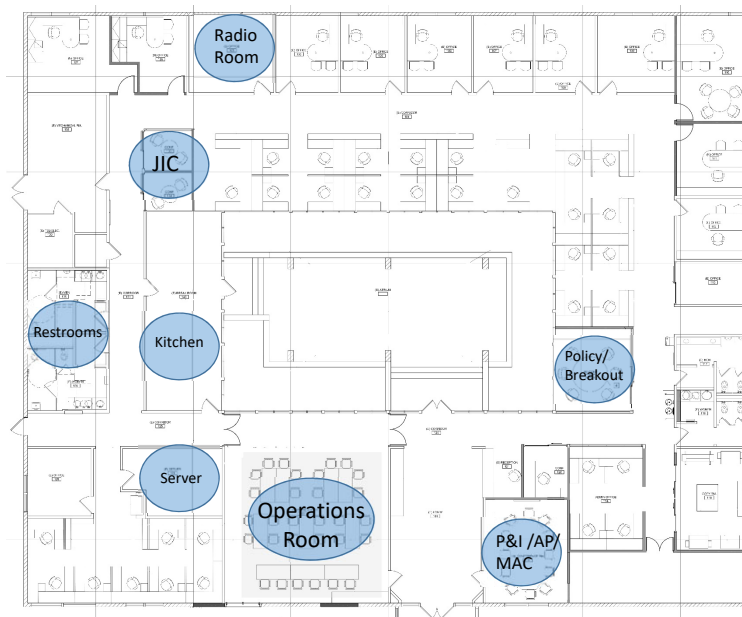
Total – **3,561 sf**



South EOC – New Building Design (3,265 S.F.)



MWDOC Building EOC Concept



Baker Treatment Plant Option

- Not a viable option based on the analysis of the location and capabilities



9

IRWD Community Center Analysis



- Pros/Cons
- Operational Challenges

Analysis of IRWD Sand Canyon Community Room			
Operational Need/Function			
	Yes	No	
Facility Features/Flexibility			
Reception Area			
Operations Floor space of 1500 sf min			
Communication/Radio Room			
Policy Group/BC/Breakout Conference Rooms			
P&I/Situation Room			
Kitchen			
Shower/Lockerroom			
Supply/Storage			
Accessibility/Sustainability			
Risk Analysis Rating			
Security			
WEROC Access to location			
Storage for Food/Water Supplies			
Storage for Operational Items			
Back up Power			
Communications/Networks			
Internet Connection			
Network Capability			
MWDOC Server Space available			
AV Display multi points within room			
Radios			
Phone Lines			
ERNET & Satellite			
Dataports			
Electrical outlets			

10

