



Conservation Framework and Call to Action



Heather Baez, Governmental Affairs Manager
Joe Berg, Director of Water Use Efficiency

Public Officials Forum 04.1.2021

SB 606/ AB 1668 (2018): Urban Water Use Objective Compliance

Indoor Residential

Based on population multiplied by gallons per capita per day standard.



Outdoor Residential

Based on measurements of irrigable area and a percent factor of local ETo.

DWR to provide these measurements

SB 606/ AB 1668 (2018): Urban Water Use Objective Compliance



Outdoor Dedicated Irrigation Meters

Based on irrigable area measurements and a percent factor of local ETo.

Water suppliers to provide these measurements

Water Losses

Aggregate estimated efficient water losses.



3

SB 606/ AB 1668 (2018): Urban Water Use Objective Compliance



Variances

Aggregate estimated water use for variances approved by the State Water Board.



Allowable Bonus Incentives

Limited to the volume of potable water reuse from new and existing facilities, not to exceed 15% of water use objective



4

Urban Water Use Compliance



Indoor Residential

Based on population multiplied
by gallons per capita per day
standard



Indoor Residential Water Use Standards

Time Frame	Existing Law
Until January 1, 2025	55 Gallons Per Capita Per Day (GPCD)
2025-2030	52.5 GPCD
After 2030	50 GPCD

AB 1434 (Friedman) – Indoor Residential Water Use



- Would establish a new indoor standard for water use:

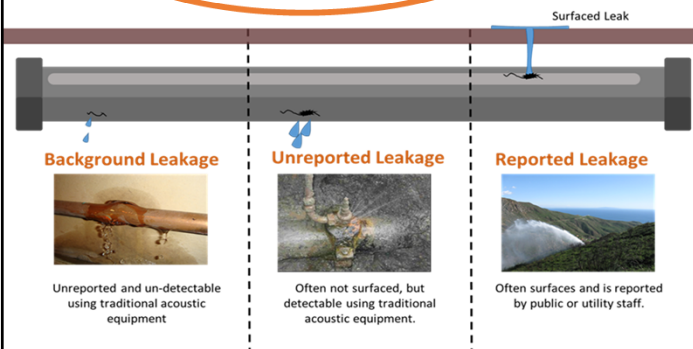
Proposed Law	
Timeframe	Water Use Allowed
January 1, 2023	48 GPCD
2023-2030	44 GPCD
After 2030	40 GPCD

- Circumvents the agreed upon language and data driven collaborative process enacted by AB 1668/SB 606
- Adversely impacts water and wastewater management, including potable reuse, wastewater, recycled and reuse systems, infrastructure, operation and supplies

Urban Water Use Compliance

Water Losses

The State Water Board is in the process of setting individual real loss targets for each water supplier.

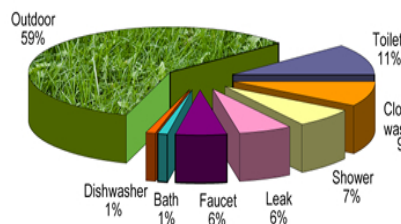


- Benefits are valued for 30 years making loss recovery cost effective for most agencies
- All agencies are strongly encouraged to:
 - Actively engage in the Rulemaking Process to shape the standard
 - Customize the Economic Model with data from your distribution system (Do not rely on default inputs)

Research Activities to Assistance with Compliance

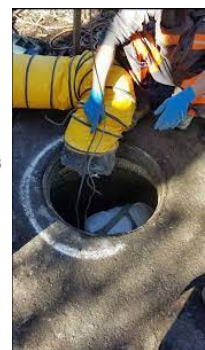
- Water Use Efficiency Potential and Opportunities Study
- Residential End Uses of Water Study
- Unintended Consequences of new requirements
 - Wastewater Collection Systems and Treatment
 - Water Supply Development Opportunities

Residential Average Water Use



Source: American Water Works Association Research Foundation, End Uses of Water

Toilet	Shower	Faucet	Clothes washer	Leak	Other*	Bath	Dishwasher
24%	20%	19%	17%	12%	4%	3%	1%
33.1 gphd	28.1 gphd	26.3 gphd	22.7 gphd	17.0 gphd	5.3 gphd	3.6 gphd	1.6 gphd



Next Steps:

- ◆ Adopt an OPPOSE position to AB 1434 or join our coalition letter
 - ◆ No data to demonstrate these numbers are feasible or reasonable
 - ◆ Statutory changes should only be considered *after* the final report is released and stakeholder input has been provided
- ◆ Engage in the SWRCB Water Loss Standard Rulemaking Process
 - ◆ Some agencies will be assigned an unattainable water loss standard
 - ◆ Last opportunity to engage the SWRCB to shape the standard



Thank you for your attention.
Please **let us know** if you have questions.

Joe Berg

Director of Water Use Efficiency
(714) 593-5008
jberg@mwdoc.com

Heather Baez

Governmental Affairs Manager
Direct: (714) 593-5012
Email: hbaez@mwdoc.com

- ◆ **physical address**
18700 Ward Street, Fountain Valley CA 92708
- ✉ **mail address**
P.O. Box, Fountain Valley CA 92728
- 🌐 **website**
www.mwdoc.com
- ☎ **main office**
(714) 963-3058



MWDOC Assistance to Member Agencies



- 💧 Ad Hoc Review Committee for Residential Area Measurement data (provided by DWR)
- 💧 Commercial, Industrial & Institutional Customer Classification System
- 💧 Dedicated Irrigation Meter Area Measurements (provided by retail water supplier)
- 💧 Water Loss Control Technical Assistance and Shared Services
- 💧 Ongoing Water Use Efficiency and Water Loss Control Workgroups

11

SB 606/ AB 1668 (2018): Urban Water Use Objective Compliance

Indoor Residential

Aggregate estimated efficient indoor residential water use. Based on population multiplied by gallons per capita per day standard.



Outdoor Residential

Aggregate estimated efficient outdoor residential water use. DWR to provide area measurements. Based on measurements of irrigable area and a percent factor of local ETo.



Outdoor Dedicated Irrigation Meters

Aggregate estimated efficient irrigation of landscape areas with dedicated irrigation meters or equivalent technology in connection with CII water use. **Water suppliers to provide these measurements.** Based on irrigable area measurements and a percent factor of local ETo.



Water Losses

Aggregate estimated efficient water losses. The State Water Board is currently in the process of setting individual real loss targets for each qualifying water distribution system.



Variances

Aggregate estimated water use for variances approved by the State Water Board.



Allowable Bonus Incentives

limited to one of the following:

- Volume of potable water reuse from existing facility, not to exceed 15% of water use objective;
- Volume of potable water reuse from new facility.



Water Use Objective

for annual reporting purposes and comparison to the actual water use in the previous year. **Due by January 1, 2024.**

12