



Welcome



Mark Monin
ISDOC President
El Toro Water District



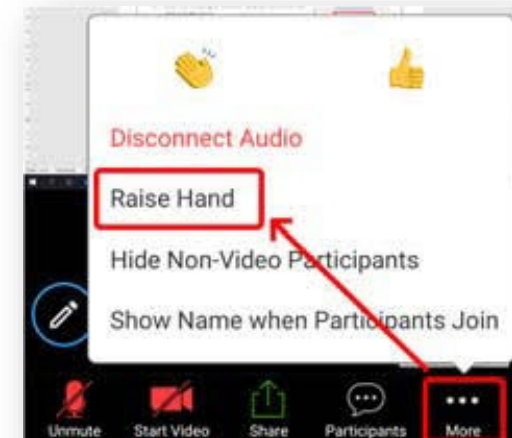
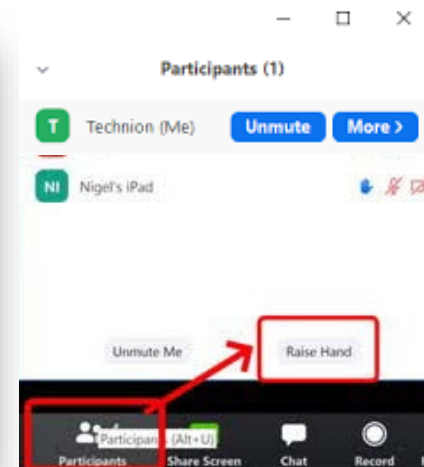
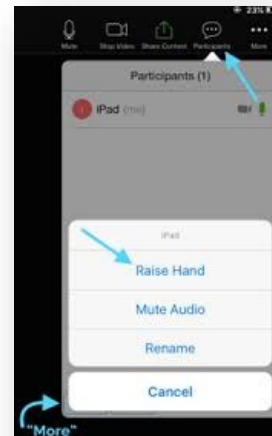
I pledge allegiance to the flag
of the United States of
America, and to the republic
for which it stands, one nation
under God, indivisible, with
liberty and justice for all.

ISDOC Quarterly “Luncheon” – July 29, 2021

Thank you for joining today’s meeting.
Participants will be muted.

To be called on to speak:

- **Please raise your hand**
- Use the chat box (to text the host)
- Press *9 to raise hand on phone



Program Speaker



Steve Torelli

Manager

Administration And Operations

City Manager's Office

July 29, 2021

Great Park Development

Steve Torelli, Manager of Great Park Administration and Operations



Approved Public Development



Visitors Center Plaza



Volleyball Improvements



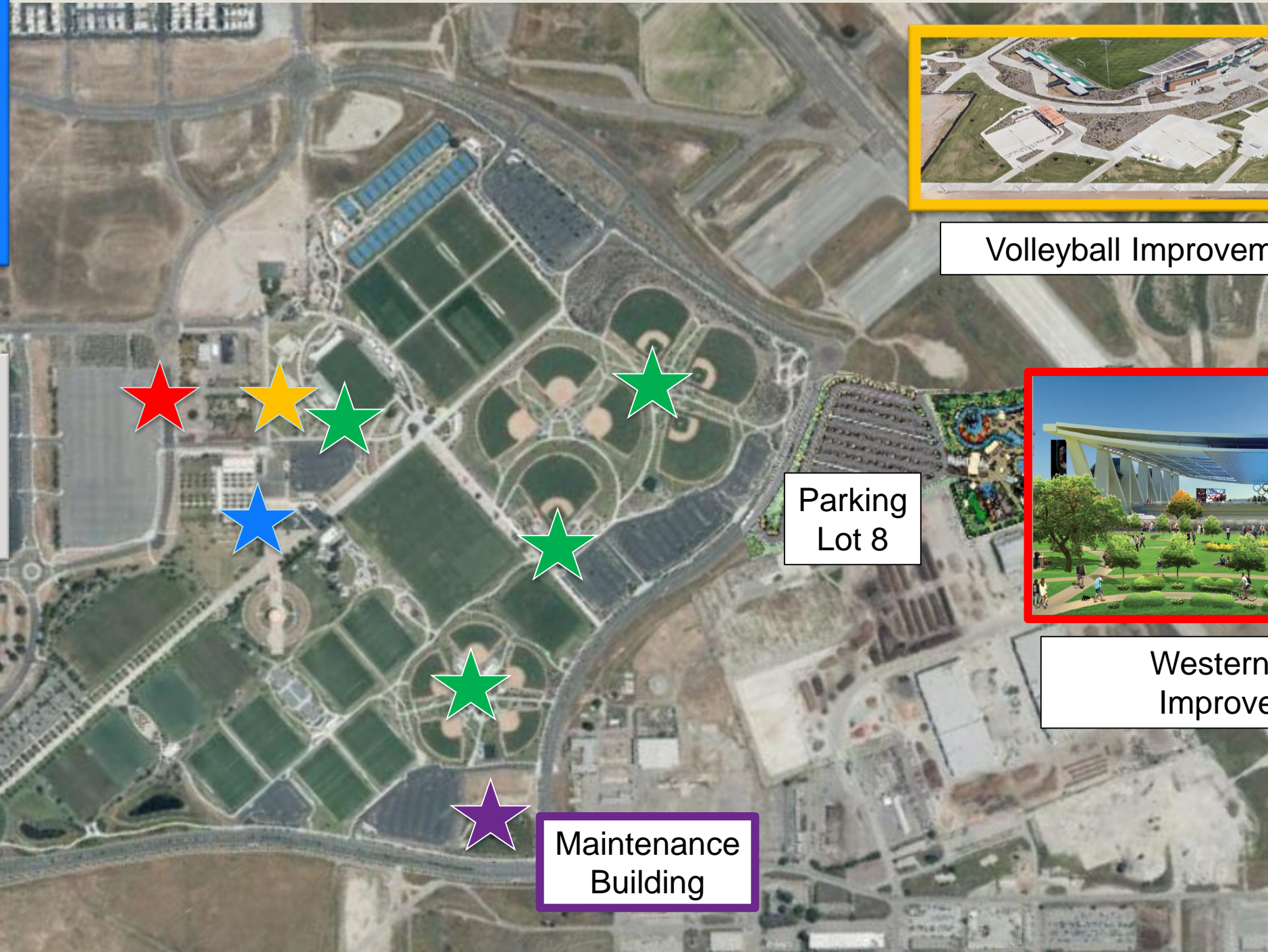
Parkwide Shade



Western Sector Improvements



Concessions



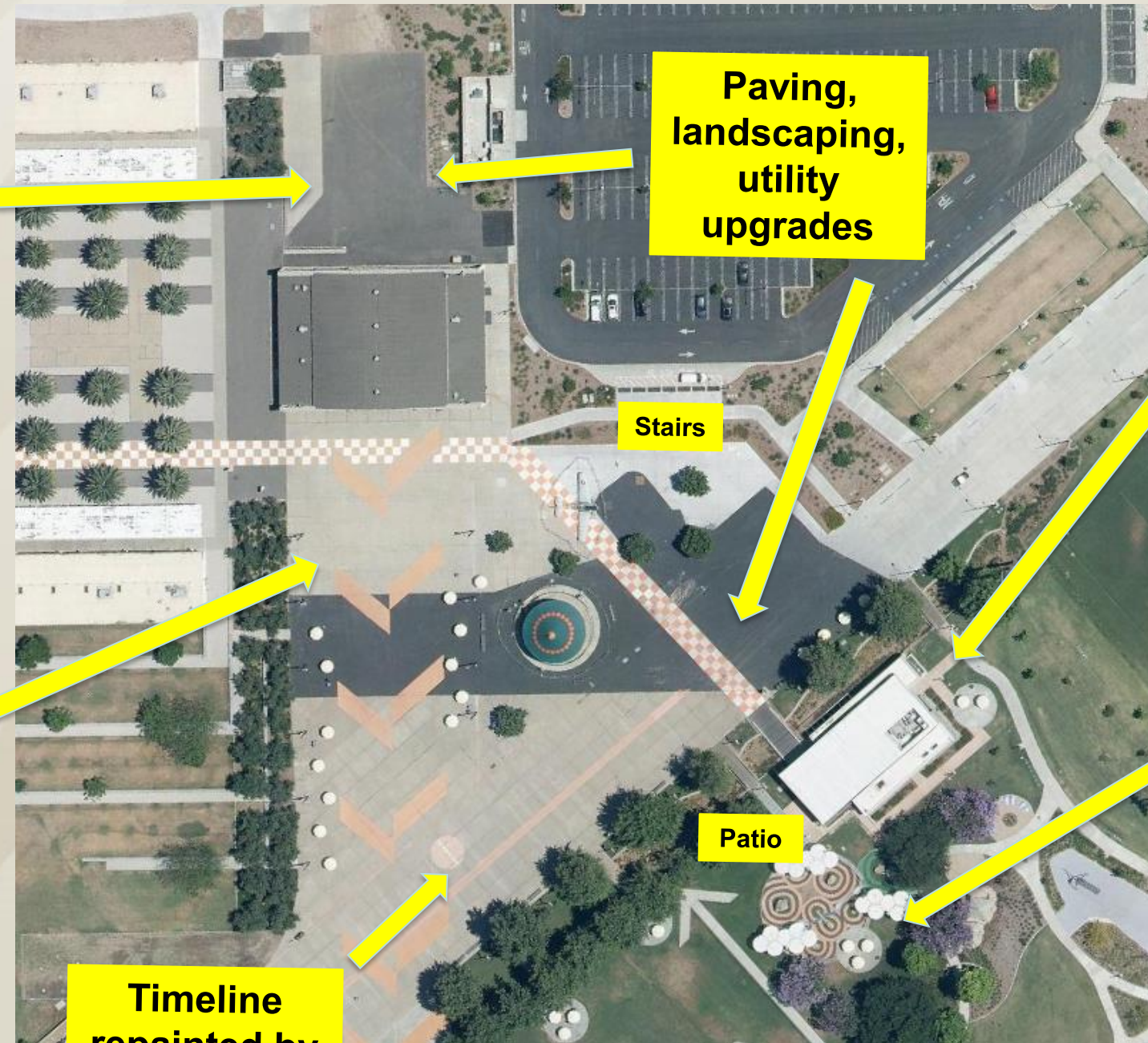
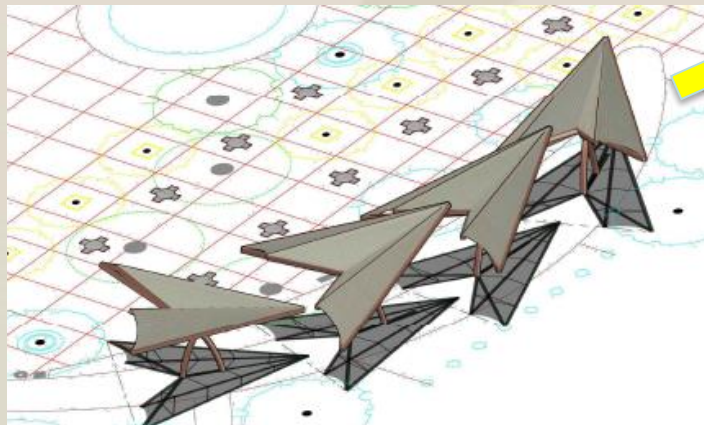
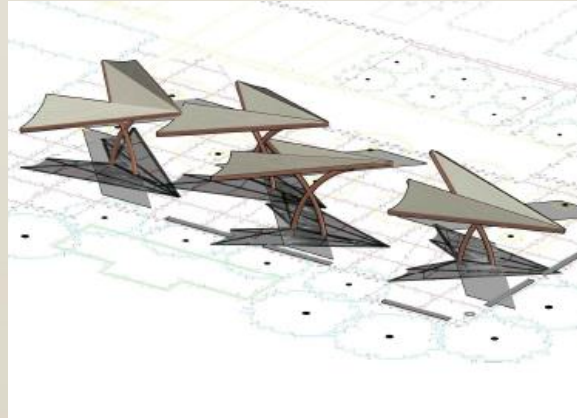
Parking Lot 8

Maintenance Building

Capital Improvement Projects

Visitor Center Plaza Refurbish/Hangar 244 Hardscape Refurbishment

Western Sector

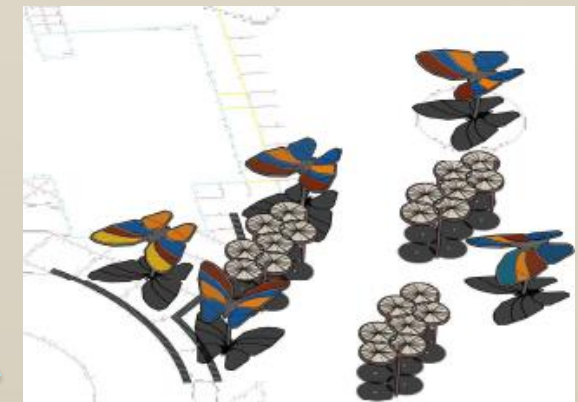
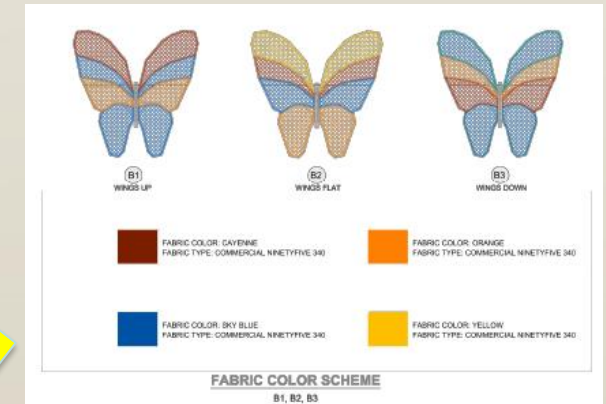


Paving,
landscaping,
utility
upgrades

Stairs

Patio

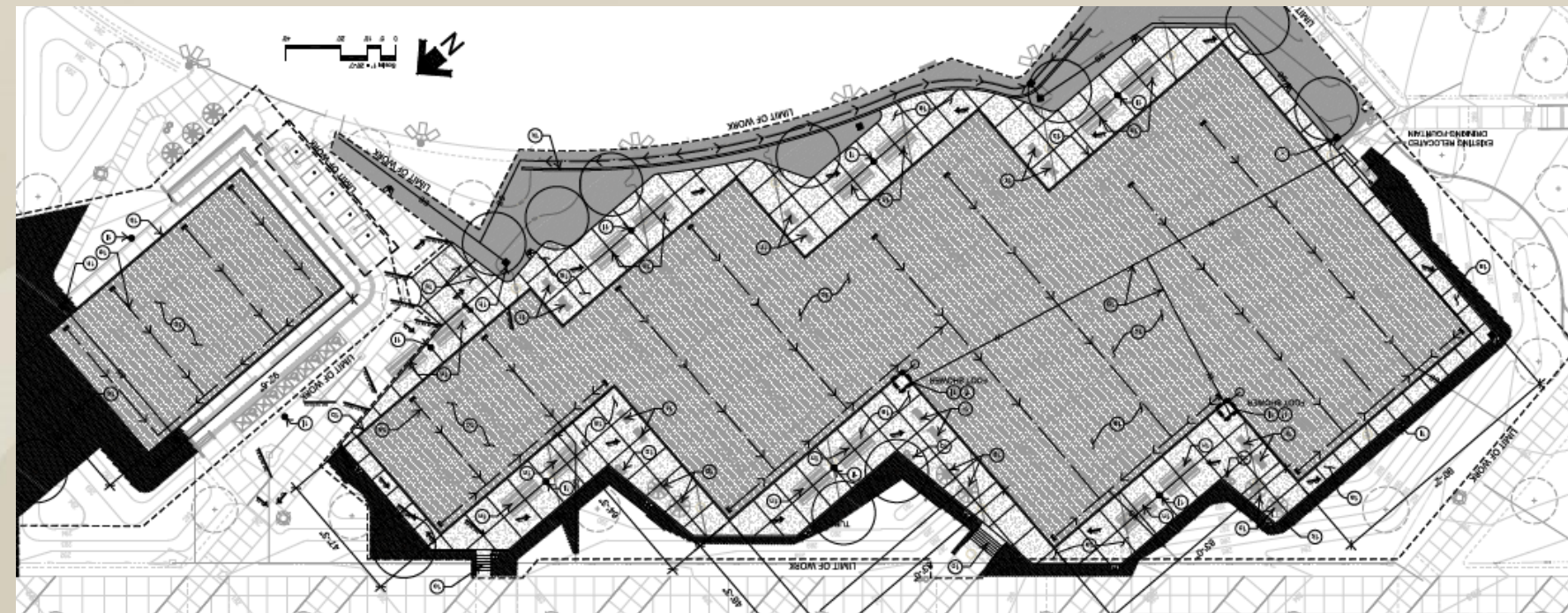
Timeline
repainted by
October 1



Volleyball Upgrades

Volleyball Courts

- Remove concrete around player areas
- Possible expansion of courts



Shade Improvements

- Shade throughout park
- Three phase plan
- Expected Phase 1 completion Summer 2022

Small Common

Single Shade Structures are intended to provide shade for up to **8 people** who may be walking along primary circulation corridors or casual observers adjacent to sports activities and simply need a break from the sun.



Medium Common

This shade structure typology is intended to provide shade for sports spectators and may accommodate up to **20 people**. These structures are located immediately adjacent to fields or courts to enhance the fan experience during competition, practice or tournaments.



Large Common

The Common Area Shade Structures are the largest shade structure typology intended to accommodate up to **50 people** for informal or formal gatherings. These structures are strategically placed in large, high-traffic areas adjacent to comfort stations, concession areas or event spaces. Large Common structures also include playground coverings.



SHADE MASTER PLAN | Orange County Great Park | September 2020

Large Rentable

The Large Rentable Shade Structure is intended to accommodate up to **50 people**. This structure is located near the Visitor Center and may be rented and used for events such as birthday parties, family reunions, or awards banquets.



Retrofit

This structure types encompasses existing structures to receive shade elements in the form of either UV Fabric or metal additions. The number of patrons this shade structure typology will support varies greatly, depending on the existing structure's dimensions and location within the park.



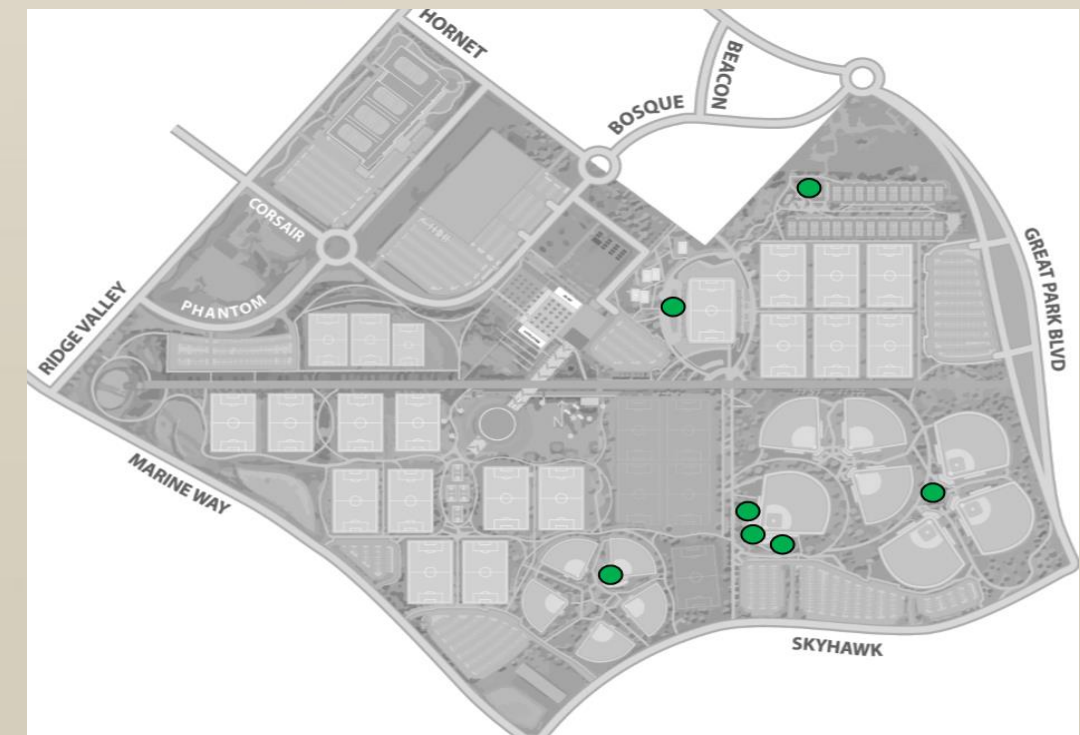
Heritage Trees

These mature trees will immediately provide shade that will either act as a stand-alone element or will also have nearby shade structures to fill in gaps/provide additional uses for the space (through seating and tables). This shade type takes into account existing trees, circulation patterns and site constraints for appropriate placement to support the tree's long-term health and vitality.



Concessions Upgrades

- Concept plans for 4 concessions were approved by OCGP Board in April 2021
- Baseball annex design being refined to match existing buildings



Western Sector Development

- Water Polo/Aquatics Facility
- Field House
- Infrastructure and Parking



Contemplated Public and Private Development

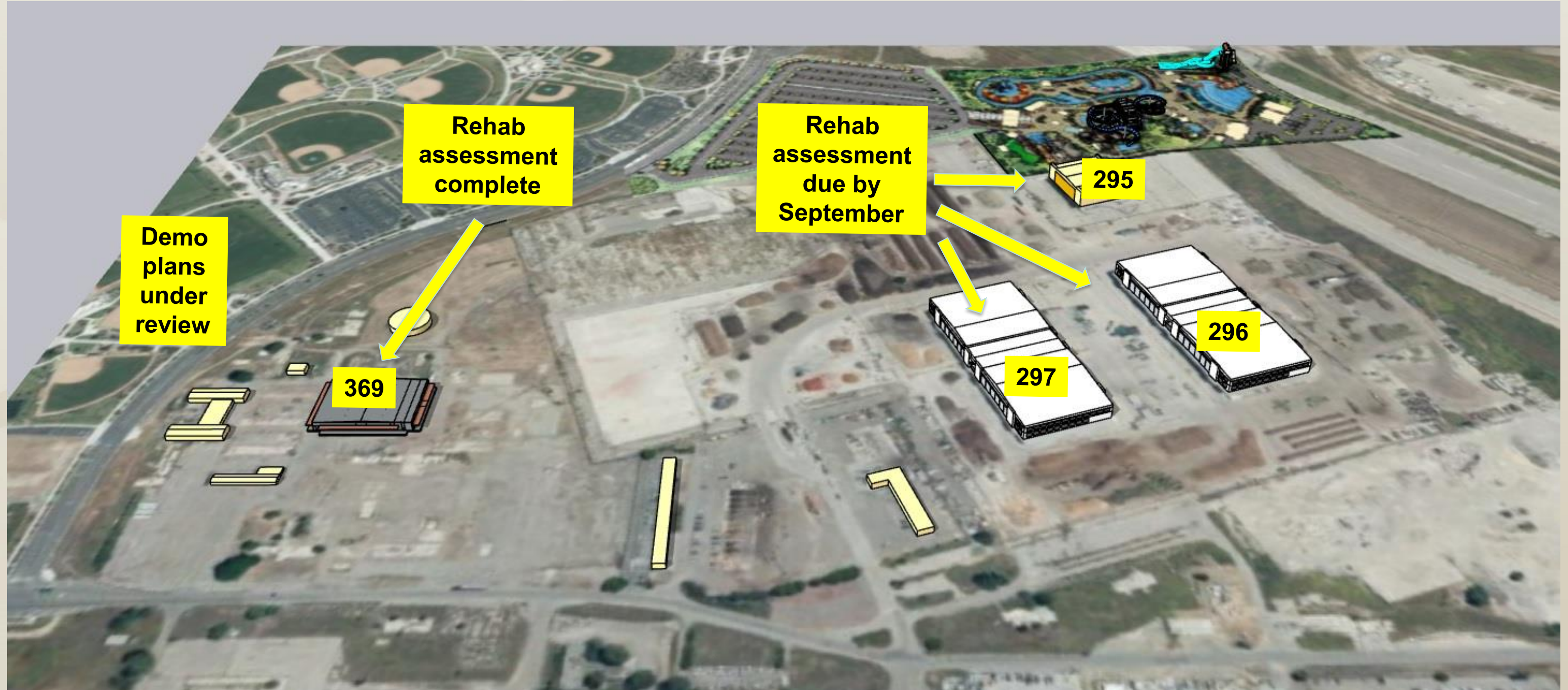
Joint Training Facility

Botanic Gardens



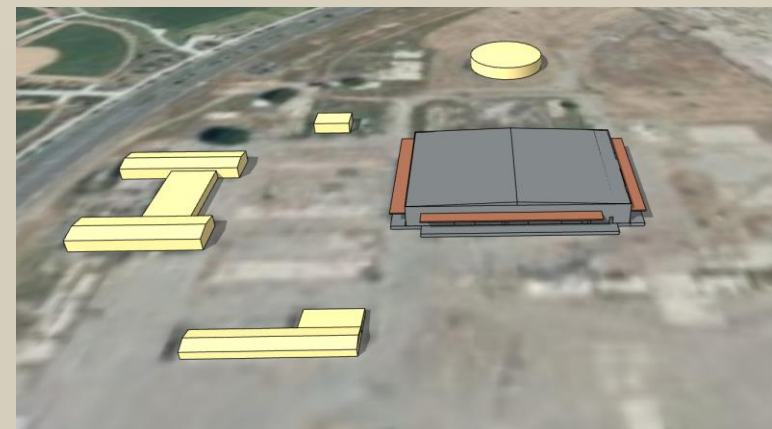
FivePlex
Events Center

Cultural Terrace Reuse Plan



Building 369 Events Center

- Rehab assessment complete
- Approximately \$12M
- Funding is available



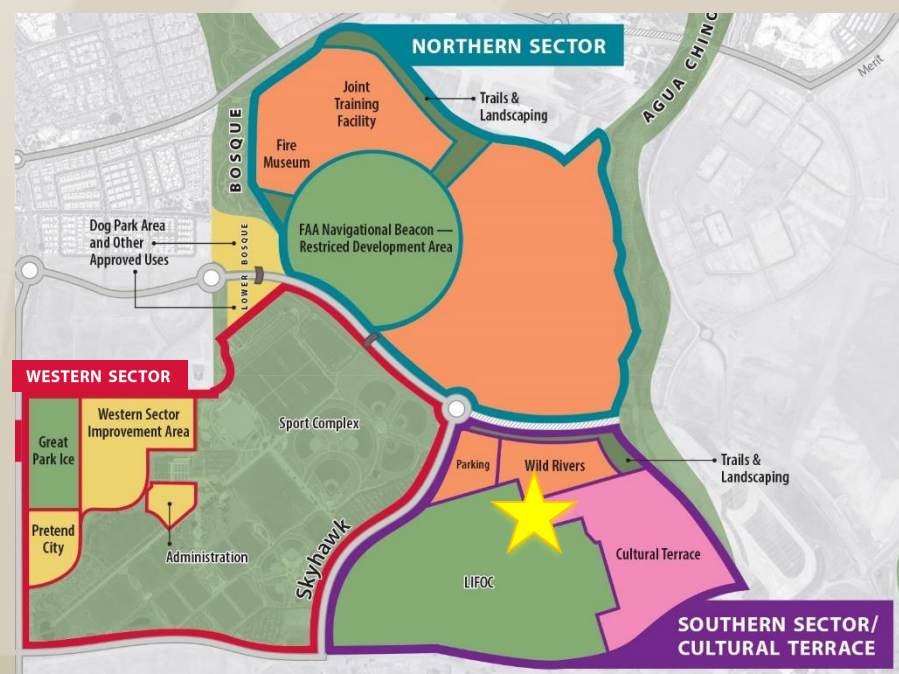
California Fire Museum – Safety Learning Center



CALIFORNIA FIRE MUSEUM & SAFETY LEARNING CENTER @ the Great Park

Conceptual rendering courtesy of TVA Architects

- City to complete due diligence on Hangar 295 in September
- Working through new form of agreement for updated site



Flying Leathernecks - Innovation Center Museum

- Flying Leatherneck Historical Foundation has started capital campaign and efforts to identify local support
- City is completing due diligence and costs estimates by September
- Pending USMC consent/participation



Public Safety Joint Training Facility



- Preliminary Design for EOC, Training and Firearm Safety Facility is complete
- Examining alternative sites across the City
- Approved Budget: \$20,500,000

Electric Vehicle Charging Stations and Solar

- (72) Level 2 chargers at Cultural Terrace parking lot (Lot 8)
- Revenue generating opportunities
- Completed solar feasibility for Lot 8
 - Lot being built to accommodate panels
 - Able to offset 22% of Great Park electrical needs



Botanic Gardens

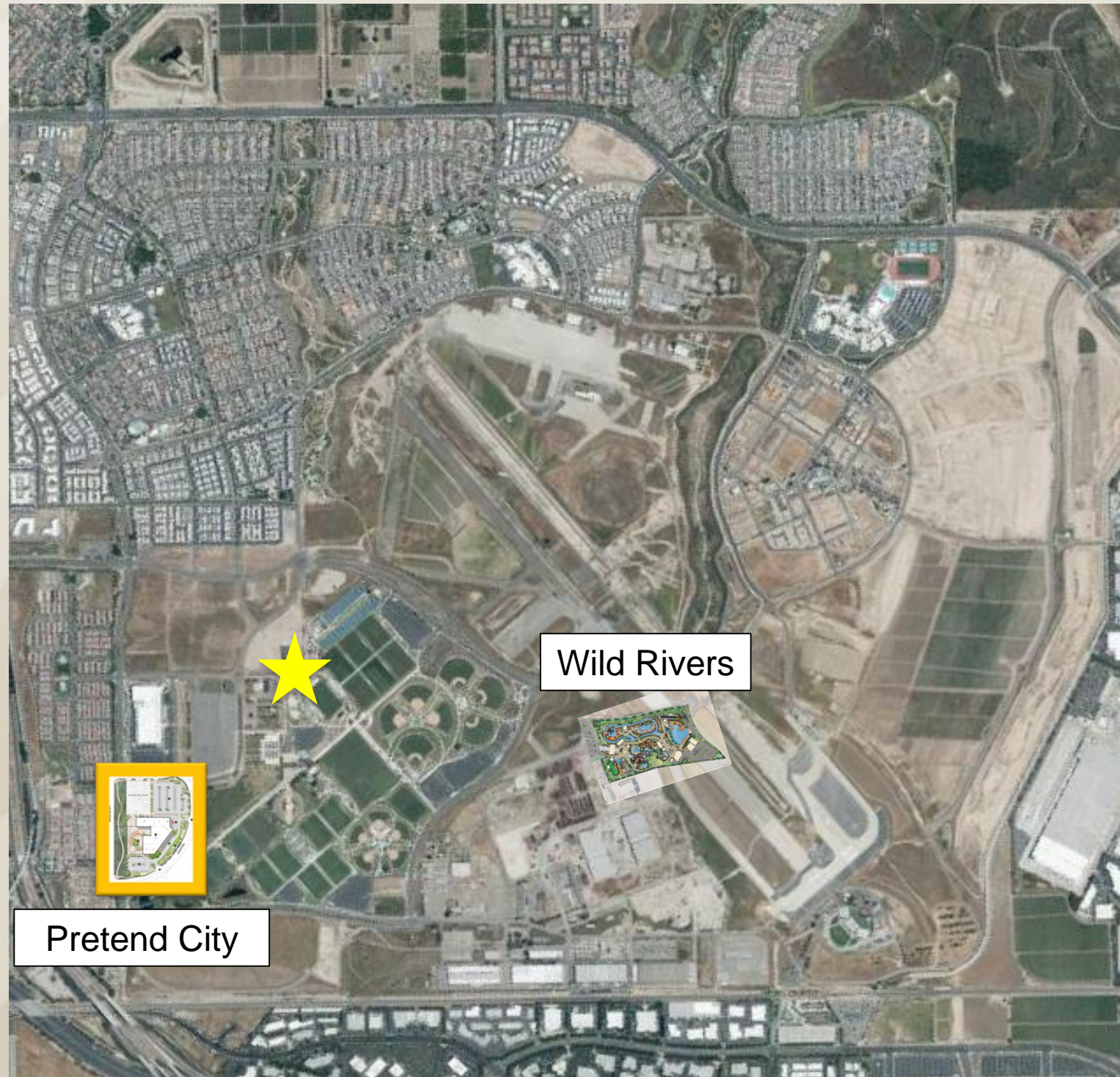
- Location to be identified during master planning process
- Estimated cost \$2M per acre
- Assessing operating models
- Recommended to include events and performance venues to provide revenue to support operations and maintenance



Previously Approved Private Development



Pop Up Village



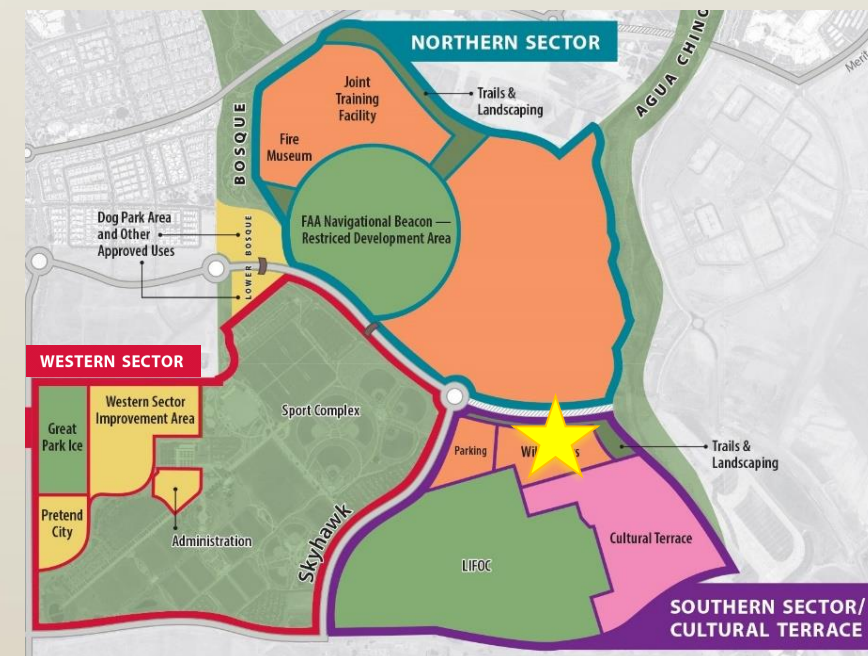
Wild Rivers



Pretend City

Wild Rivers

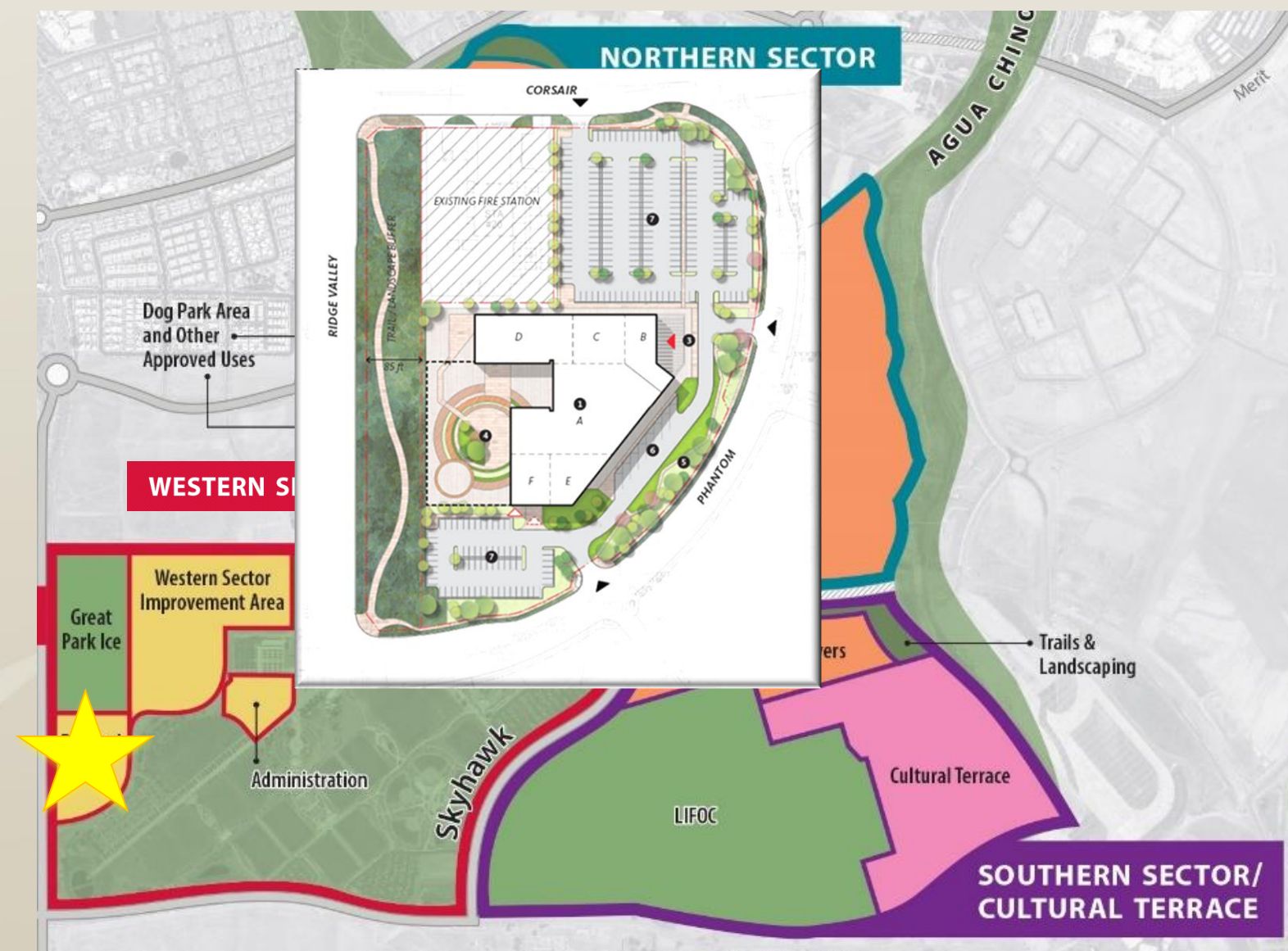
- Groundbreaking July 7
- Anticipated opening May 2022



Pretend City

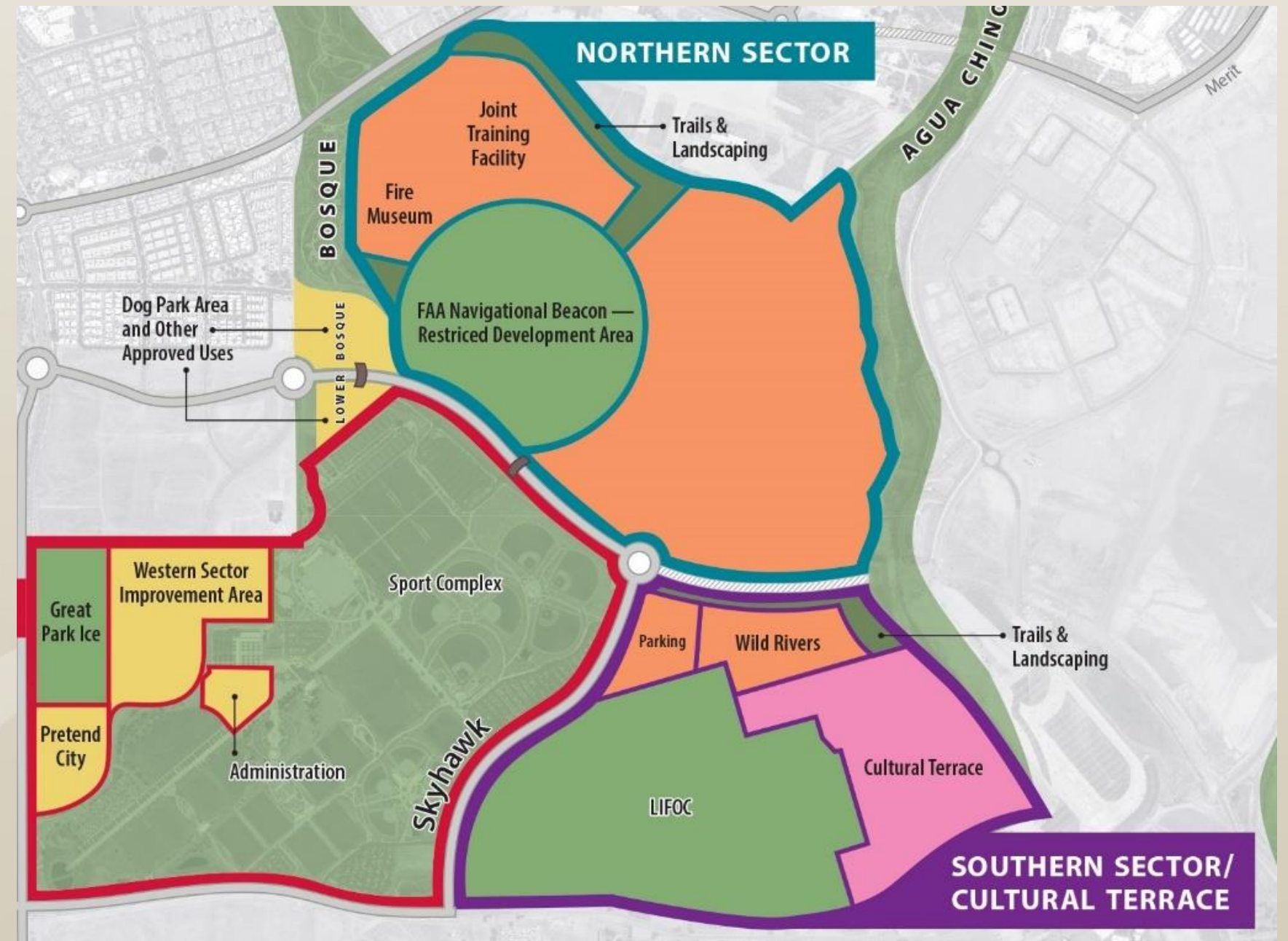
Western Sector

- 5-acre site adjacent Ridge Valley and Phantom
- \$30M total budget
- Site to be graded via Western Sector Development



Great Park Master Plan Update

- Land Planning Exercise
- Community Engagement



July 29, 2021

Great Park Development

Steve Torelli, Manager of Great Park Administration and Operations



Member Spotlight



Yesenia Baltierra
Assistant Library Director
Placentia Library



PLACENTIA LIBRARY DISTRICT RESPONDS IN CRISIS AND BEYOND

PRESENTER

Yesenia Baltierra, Assistant Library Director

PLACENTIA LIBRARY BY THE NUMBERS



790,000+ total items (physical & digital)

\$223,850 collection budget

257,000+ items circulated

44,371 program attendance

83,709 in person visitors

115,539+ virtual library visits



1

BASIC



2

INTERMEDIATE



3

ADVANCED



4

TRANSFORMED

PLACENTIA LIBRARY SERVICES



1 BASIC

Literacy

- Adult Literacy
- Storytime
- Book Clubs
- Print & Digital Materials

Connectivity

- 24/7 wifi access
- Computers & Internet

Community Space

- Meeting space
- Study room space
- Community events





2

INTERMEDIATE

Communications & Community Building

- Online storytimes, programs, and events
- Curbside services
- Home delivery services
- Friends Foundation donation events
- Enrichment & Take Home Kits
- Passport and photos
- Exam proctoring





3 ADVANCED

Addressing Community Needs

- Internet and computer access for jobseekers
- Free laptop & hotspot checkout
- Mailing free masks to patrons
- Drive-thru free lunch program

LIBRARY OF THINGS (LOTs)

LAPTOP AND HOTSPOT KITS
AVAILABLE FOR CHECKOUT!

PLACENTIALIBRARY.ORG





4

TRANSFORMED

Supporting Vulnerable Populations

- Literacy virtual programs
- Veteran resources
- Homeless shelter
- Library Director Message

The screenshot shows the Placentia Library District website. At the top is a navigation bar with icons for 'about us', 'my account', 'departments', 'resources', 'services', 'calendar', 'support the library', and 'catalog, ebooks, & music'. Below the navigation bar is a section titled 'COVID-19 Information'. It features a red banner with the text 'PLACENTIA LIBRARY COVID-19 INFORMATION' and the Placentia logo. Below the banner, it says 'Updated July 2021'. The main text states: 'Placentia Library is open! We are open Monday - Thursday 9 a.m. - 8 p.m., Friday - Saturday 9 a.m. - 5 p.m. and Sunday 1 - 5 p.m. Our Bodhi Tea Leaf Coffee Traders coffee bar is open Monday - Saturday 9 a.m. - 4 p.m. Click here to learn more about curbside pickup service.' A paragraph follows, stating: 'At the Placentia Library District, we are committed to providing a safe and healthy environment for you and your family. The COVID-19 virus has had an unprecedented impact on our staff and the community we serve. On March 19, 2020, Governor Gavin Newsom announced the N33-20 shelter-in-place Executive Order for all non-essential services, including libraries. The Placentia Library has been closed since that afternoon. Library staff, including temporary workers (substitutes) have been telecommuting as authorized by the Library Board of Trustees on March 16, 2020.' A final paragraph states: 'As information providers, we strive to continue to provide you with the most current and relevant information available from reliable sources. In addition, our staff has been working hard to provide you with as many virtual services and resources as we get through this together.'

The screenshot shows the Placentia Library District website. At the top is a navigation bar with icons for 'about us', 'my account', 'departments', 'resources', 'services', 'calendar', 'support the library', and 'catalog, ebooks, & music'. Below the navigation bar is a section titled 'Placentia Library Director Message: Library Closed Through April 12 (March 19, 2020)'. It features a date 'Mar 19, 2020'. The main text is a letter from the Library Director, Jeanette Contreras, dated March 19, 2020. It states: 'Dear Placentia Library District Patrons: I am sorry to inform you we are now closed through April 12th. During this closure, please be aware of the following: No in-person service will be available. All fines will be waived. Existing requests (currently in our system) will be extended through the closure period. Do not return your library materials as our bookdrops are closed. Please keep the books for the extra weeks to enjoy with your family. Amazon lockers are not accessible. Bodhi Coffee is closed. Programs are cancelled through April 30th. The Friends Foundation bookstore is closed.' It then says: 'We truly appreciate your understanding as we continue to take the necessary steps to ensure the safety of our patrons, library staff and volunteers. Please visit us at www.placentialibrary.org to access our e-content. We will miss the many smiles we've had the pleasure of serving, and look forward to seeing you soon! Please take care and stay well.' The letter is signed 'Sincerely, Jeanette Contreras, Library Director'.

My Mask + Your Mask= **Care**



AWARDS

2020 Chamber of Commerce Employer of the Year

2020 California Special District Association Exceptional Public Outreach & Advocacy Award

2020 AT&T Government Technology Innovation Award: Operations Category

2021 California Library Association PR Excellence for Library Director's Messages





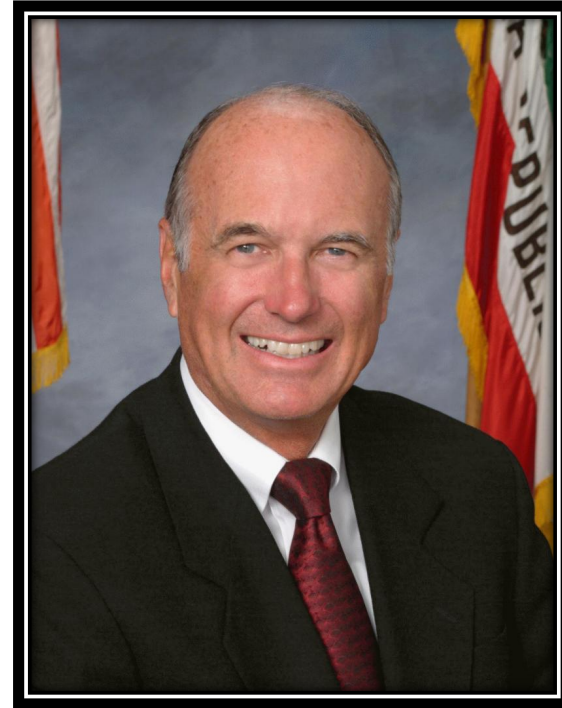
THE POWER OF PLACENTIA LIBRARY

ELEVATING SERVICES TO THE NEXT LEVEL

THANK YOU!

Associate Member Spotlight

ACKERMAN CONSULTING



Dick Ackerman
CEO
Ackerman Consulting

Reports

Executive Committee Report Orange County Operational Area

Mark Monin

Director, El Toro Water District



Reports

ACWA Report

Saundra Jacobs

Director, Santa Margarita Water District



Reports

CSDA Report

Arlene Schafer

Director, Costa Mesa Sanitary District



Reports

LAFCO Report

James Fisler
Director, Mesa Water

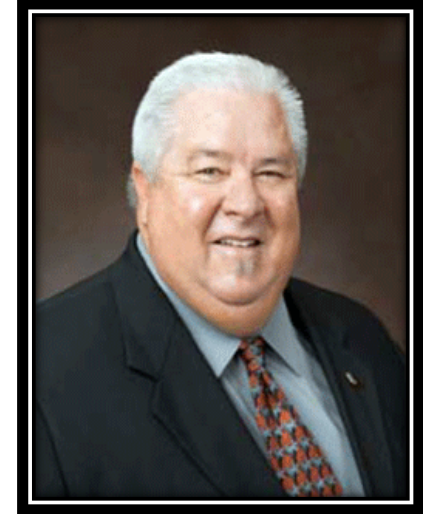


Reports

OCCOG Report

Mike Scheafer

Director, Costa Mesa Sanitary District





Announcements/Closing Comments

**Next ISDOC Executive Committee Meeting is
Tuesday, August 3, 2021**

**Next ISDOC Quarterly Luncheon is
Thursday, October 28, 2021**

