



Two General Types of Programs Being Considered

| Pilot Storage Program | Emergency Water Supply |
|--------------------------------------------------|------------------------------------------------------------|
| Similar to MWD CUP Storage Program | Similar to SOC Phase I Emergency Services Agreement |
| Stored water available for drought periods | Water available for emergencies and/or scheduled shortages |
| Storing water in the OCWD groundwater basin | Water does not have to be stored |
| Don't necessarily have to pump the water to MNWD | Water needs to be delivered to MNWD service territory |



Existing South Orange County (SOC) Phase I Emergency Services Agreement

- Approved in 2006
- Decision to extend or terminate - November 2030
- Provide water supplies to SOC agencies via IRWD water system during emergency events
- Up to 50 cfs for 30 days (3,000 af) – relatively small program
- IRWD still needs to comply with annual OCWD BPP/BEA



Existing South Orange County (SOC) Phase I Emergency Services Agreement

- No OCWD compensation
- SOC agencies reimbursed IRWD for necessary improvements to send water south
- IRWD ability to provide SOC water decreasing as demands within their system increase
- Section 6 of agreement contemplates consideration of future phases of the program

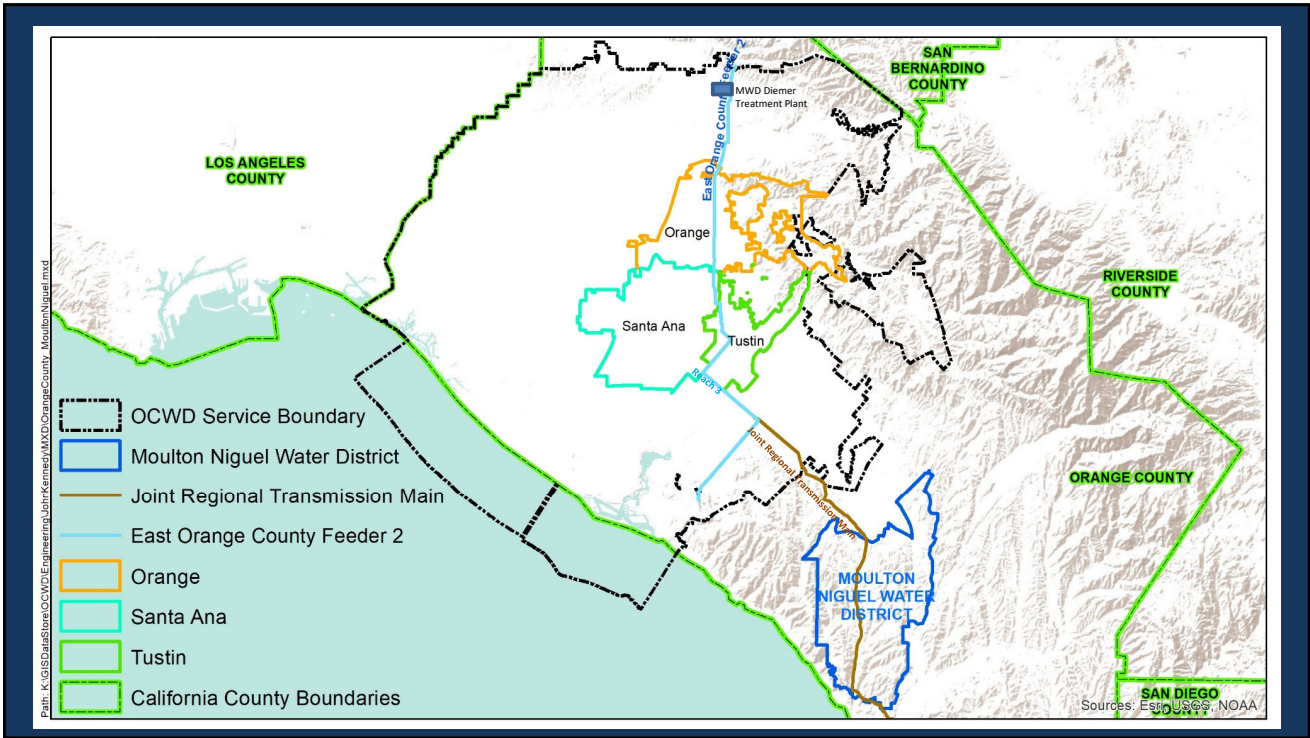
3



Groundwater Conveyance Study

- How to get water to MNWD
- Hired Tetra Tech (\$195,000)
- Reviewed in detail water systems of Santa Ana, Tustin and Orange
- Determined options/costs to pump groundwater into the East Orange County Feeder #2 (EOCF#2)

4



Possible Projects to Pump Groundwater Into the EOCF#2 Pipeline

| New Project/Facility | Flow Rate (Cubic feet per second) | Flow Rate (Acre-feet per month) | Estimated Construction Cost (Millions) |
|--------------------------|-----------------------------------|---------------------------------|----------------------------------------|
| Santa Ana – East Station | 14 | 845 | \$22.4 |
| Santa Ana - Cambridge | 10 | 603 | \$21 |
| Orange – City Yard | 12 | 724 | \$23.8 |
| Orange – Batavia Plant | 7 | 422 | \$23.8 |
| Tustin Walnut Well Site | 3-5 | 181-302 | \$19.6 |



Review of Existing Storage Programs

- Hired Westwater Research (\$77,475)
- Surveyed other storage programs in California
- Determined which were most applicable to deal being considered by OCWD and MNWD
- Provides range of cost per acre-foot OCWD could consider charging MNWD for storage

7



MNWD Payment to OCWD

| Analysis Approach | Minimum (\$/af) | Maximum (\$/af) |
|------------------------------|-----------------|-----------------|
| Cost Reimbursement | \$195 | \$213 |
| Lifecycle Present Value Cost | \$44 | \$188 |
| Forgone Cost Savings | \$226 | \$226 |
| Replacement Cost | \$578 | \$578 |

8



Next Steps

- Discuss findings with
 - MNWD Board
 - MWDOC
 - OCWD Groundwater Producers
 - Interested SOC agencies
- Receive and incorporate comments on the two draft studies
- Approach city of Santa Ana to develop a three way Memorandum of Understanding
- Continued meetings with the OCWD and MNWD ad-hoc committee.

9