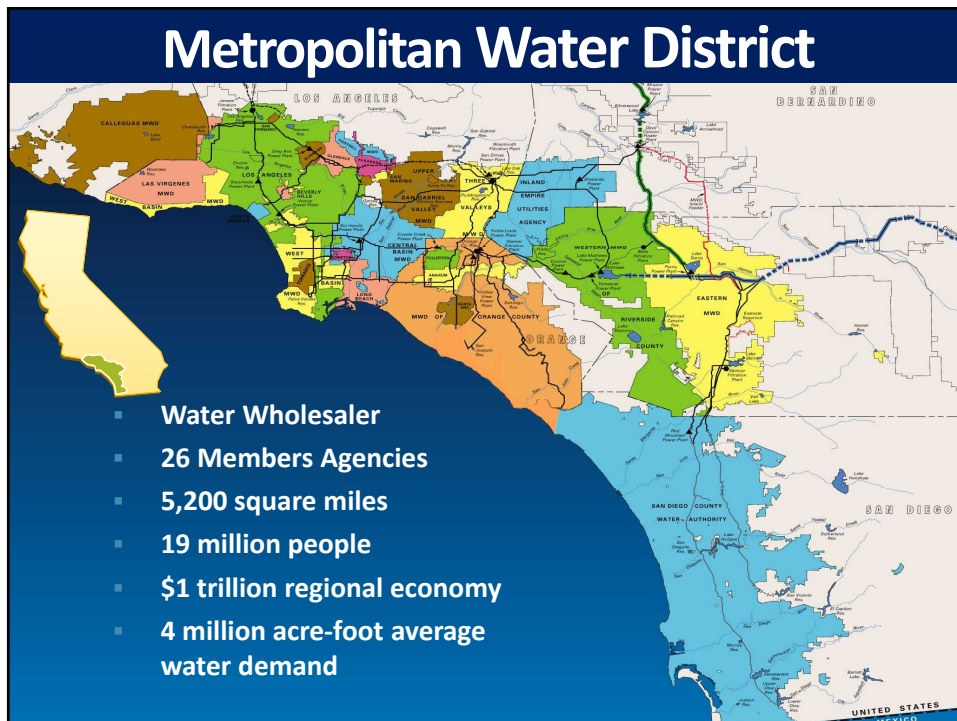




Water Education Programs

MWDOC Joint Board Workshop
July 3rd, 2019



Water Education Programs

Mission

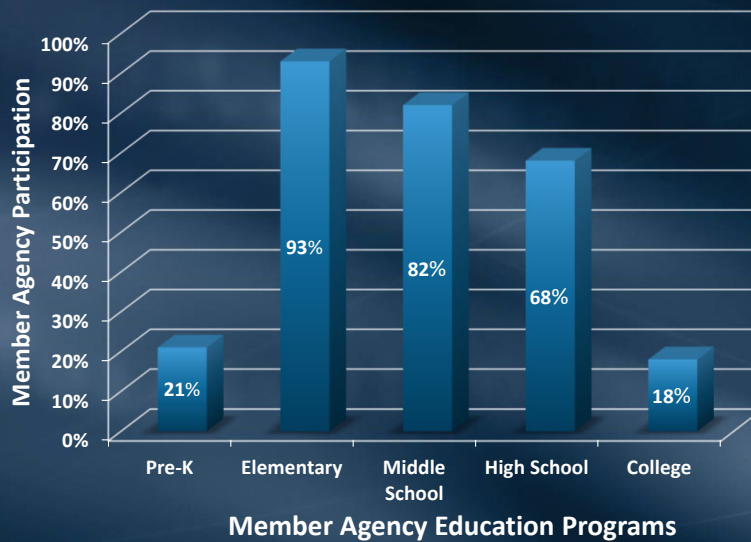
Promote conservation behaviors and critical thinking of water issues facing California

Education Strategic Plan

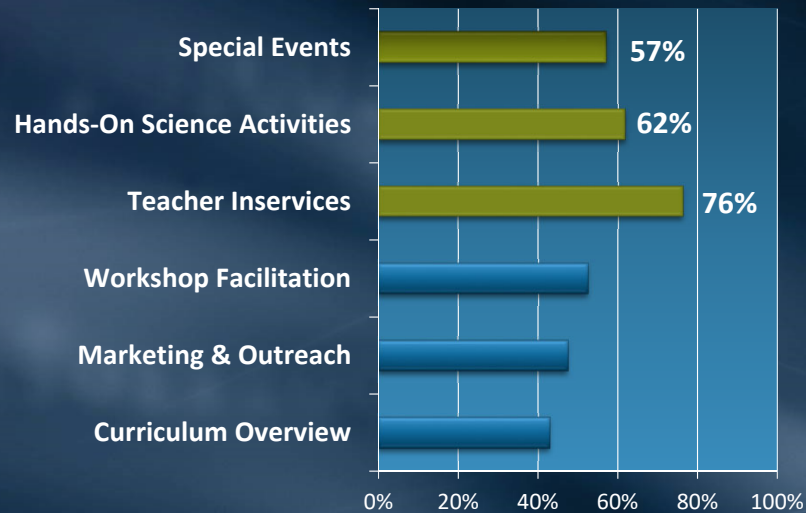
- Expand working programs
- Educational Pipeline to jobs in the water industry
- Leverage collaborations
- Educational technology



Member Agency Educational Outreach



Types of Member Agency Collaborations



Analysis of MWD Education Program

STRENGTHS

- Dedicated and experienced staff
- Relationships w/member agencies
- Popular interdisciplinary programs
- Large network of collaborators
- MWD's breadth of expertise

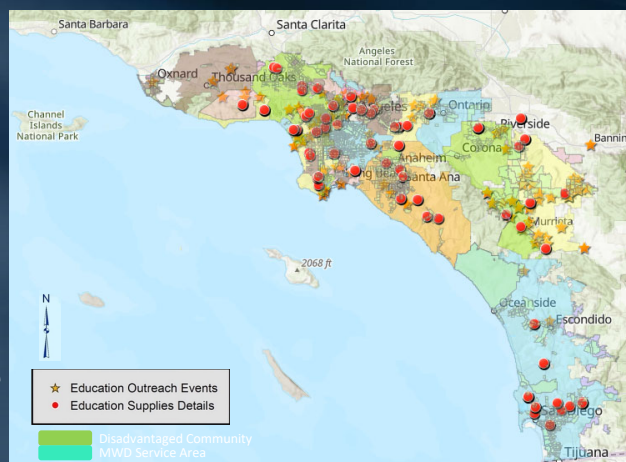
CHALLENGES

- Continuous water education through ALL grade levels
- 5 million students and teachers
- Knowledge loss by retirement
- Rapidly evolving technology



Education Services Activity Jan. 2018 – Dec. 2018

- 198 events
- 433 classrooms
- >100,000 Social media impressions
- >100,000 student exposure



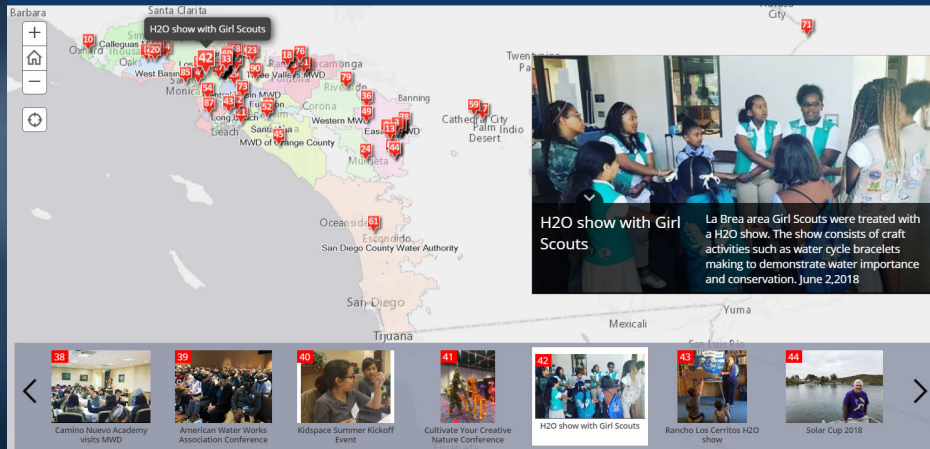
GIS Story Map of Education Activities

www.mwdh2o.com/education

Water Education Programs of the Metropolitan Water District of Southern California

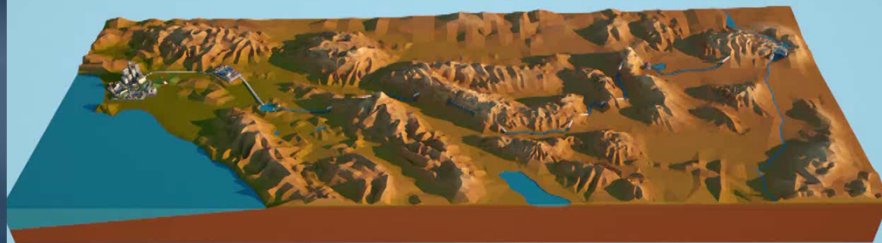
A Metropolitan Water District Story Map

The Metropolitan Water District of Southern California is a cooperative of 26 cities and water agencies serving 19 million people in six counties.



Virtual Reality Tour of Colorado River Aqueduct

COLORADO RIVER AQUEDUCT



VIRTUAL FIELD TRIP

Get Metropolitan's Aqueduct VR app! iOS and Android



Education Technologies

- Chromebooks
- Digital Microscopes
- Touchscreen Displays
- Augmented Reality Sandbox
- Aquaponics
- Virtual Reality



35 Years of Water Education

● Since 1983

- Reached over 3 million students
- Worked with over 30,000 teachers
- Reached 154 of 155 school districts
- Collaborations with formal and informal educators
- Recognized with state and national awards



Adrian Hightower
Education Unit Manager
ahightower@mwdh2o.com

Bewaterwise.com



@mwdh2o