



Groundwater Conditions within the Metropolitan Service Area

MWDOC Joint Board Workshop
January 2, 2019

Purpose

- Provide a summary of previous Board updates
- Update current groundwater conditions in the service area
 - Groundwater production
 - Groundwater recharge
 - Storage space
- Present groundwater conditions for individual basins

Timeline of Previous Board Updates

- September 2007
 - Published Groundwater Assessment Report (Base Period 1986-2005)
- November 2011
 - Update on groundwater conditions
- February 2015
 - Update on groundwater conditions
- January 2018
 - Update on current groundwater conditions
- October 2018
 - Update on regional groundwater conditions

WP&S Committee

Item 6b Slide 3

October 8, 2018

Groundwater Basins in Service Area



- Groundwater is over 1/3 of regional supplies
- 89 percent of basins are adjudicated or managed

WP&S Committee

Item 6b Slide 4

October 8, 2018

Tracking of Groundwater Production

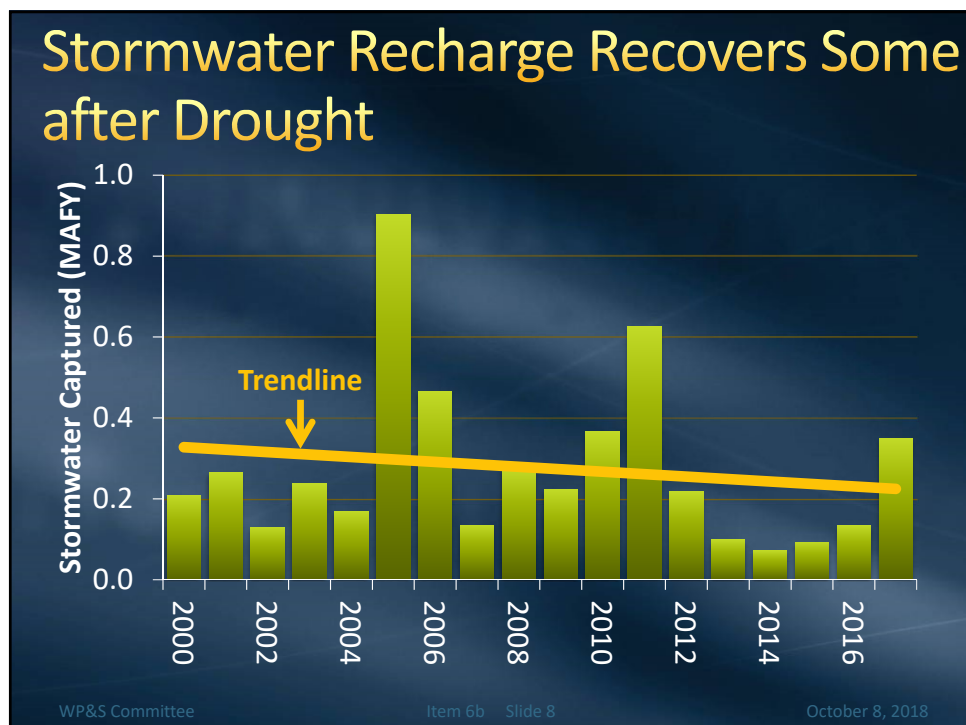
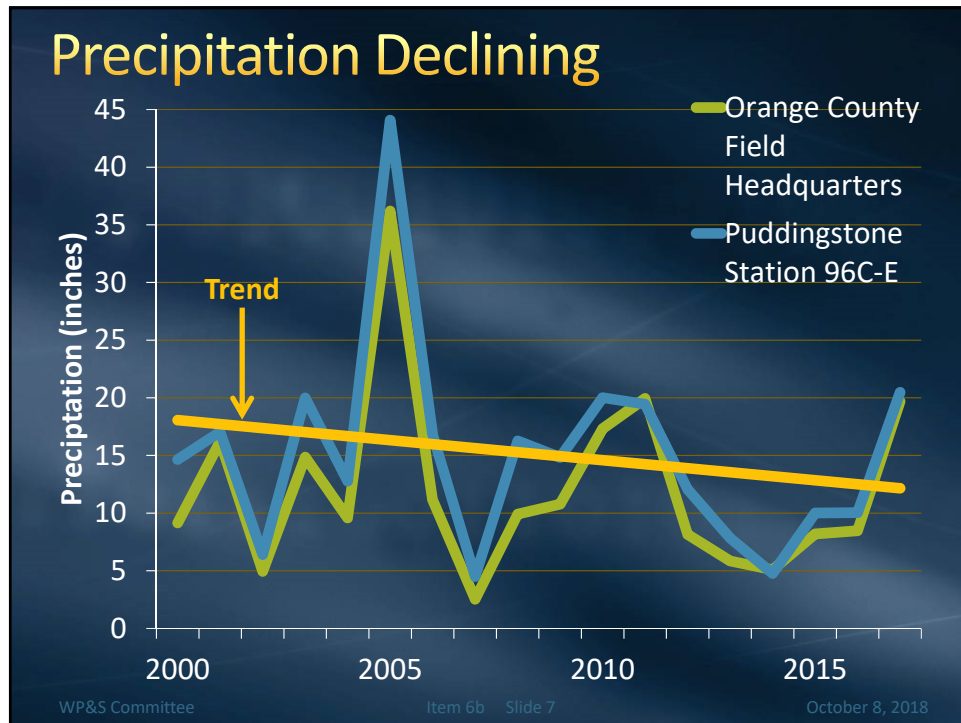
- Annually through local resource production surveys
- Information exchange with watermasters and member agencies
- Confirmation every 5 years through IRP and UWMP process

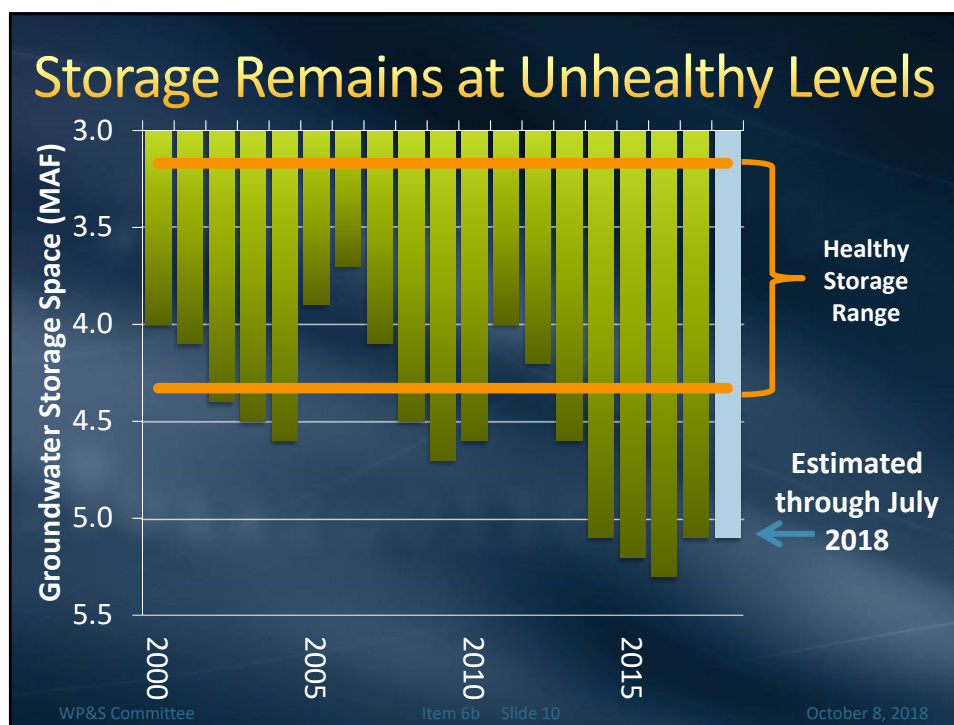
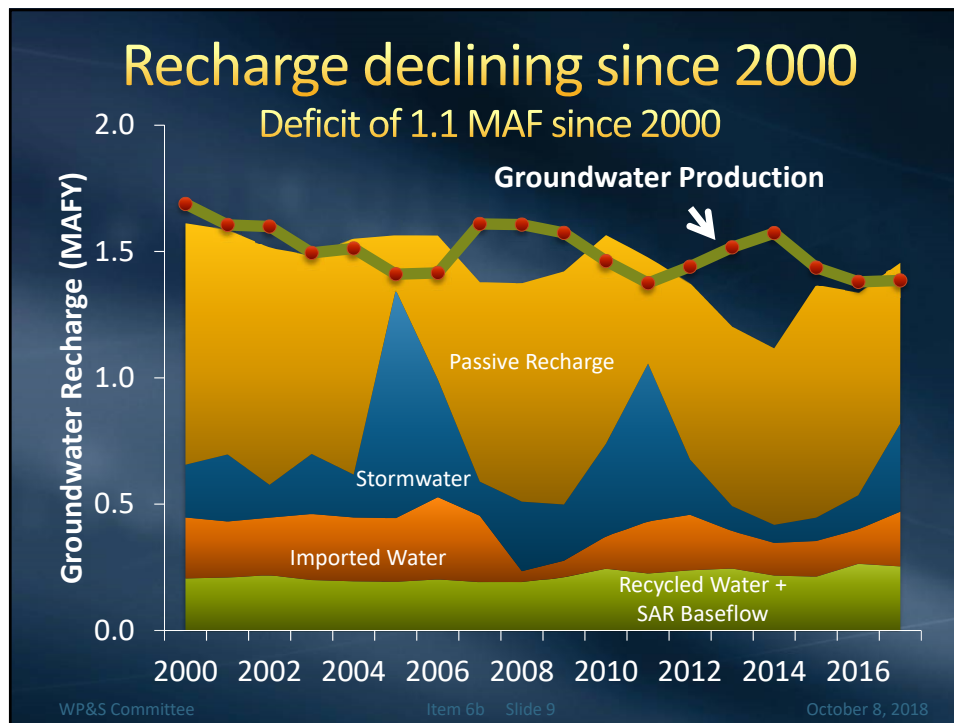
WP&S Committee

Item 6b Slide 5

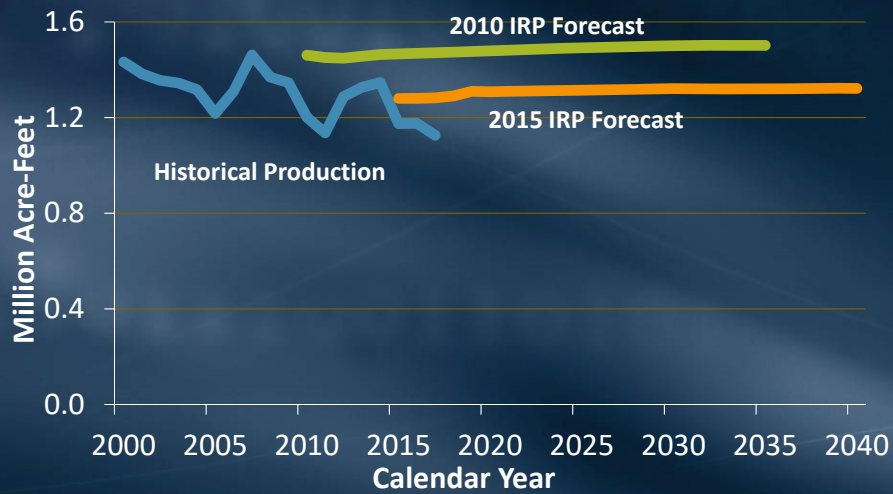
October 8, 2018

Regional Overview





Agencies Projected Lower Groundwater Production in 2015 IRP



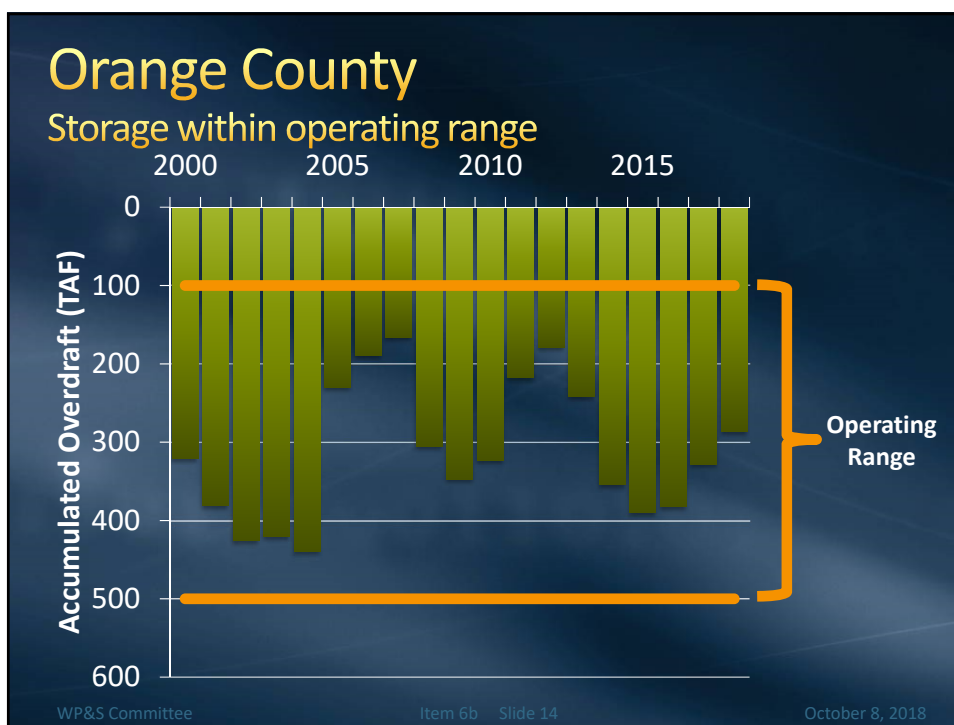
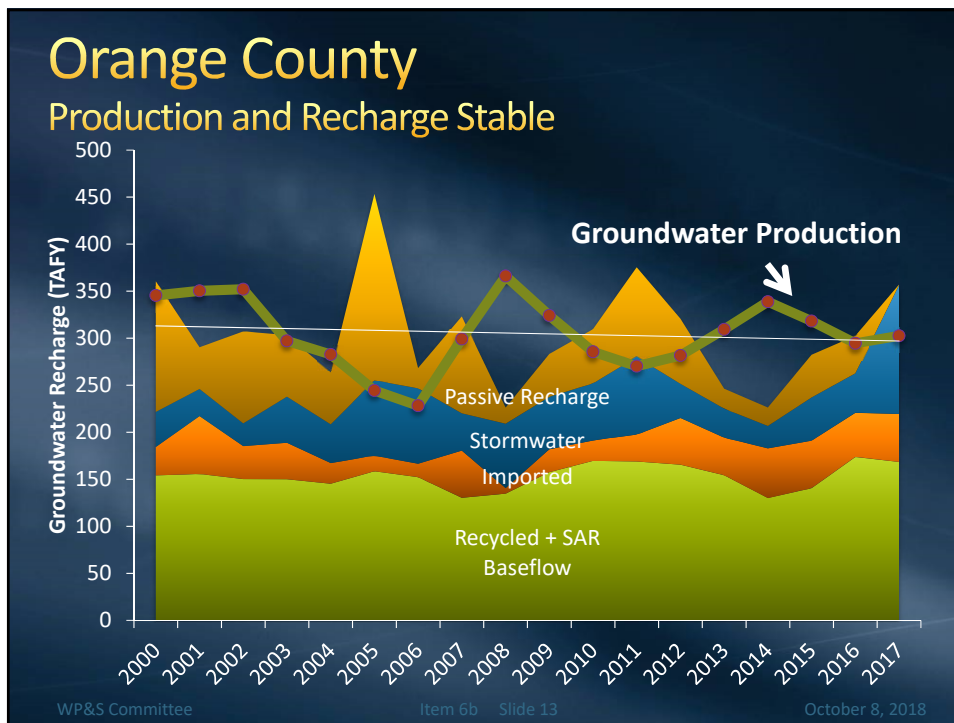
WP&S Committee

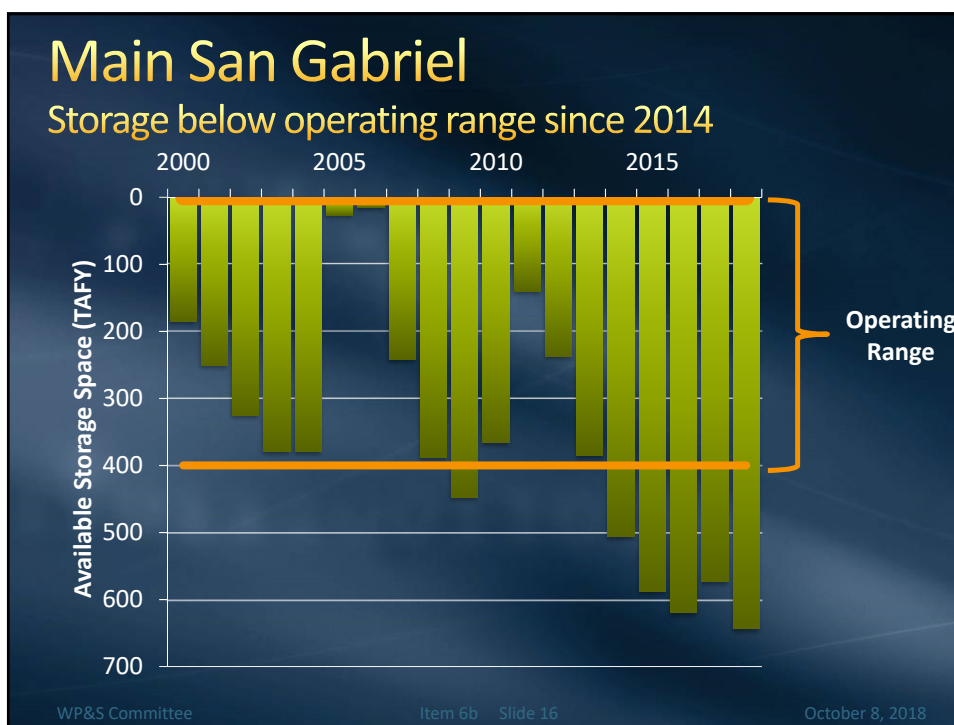
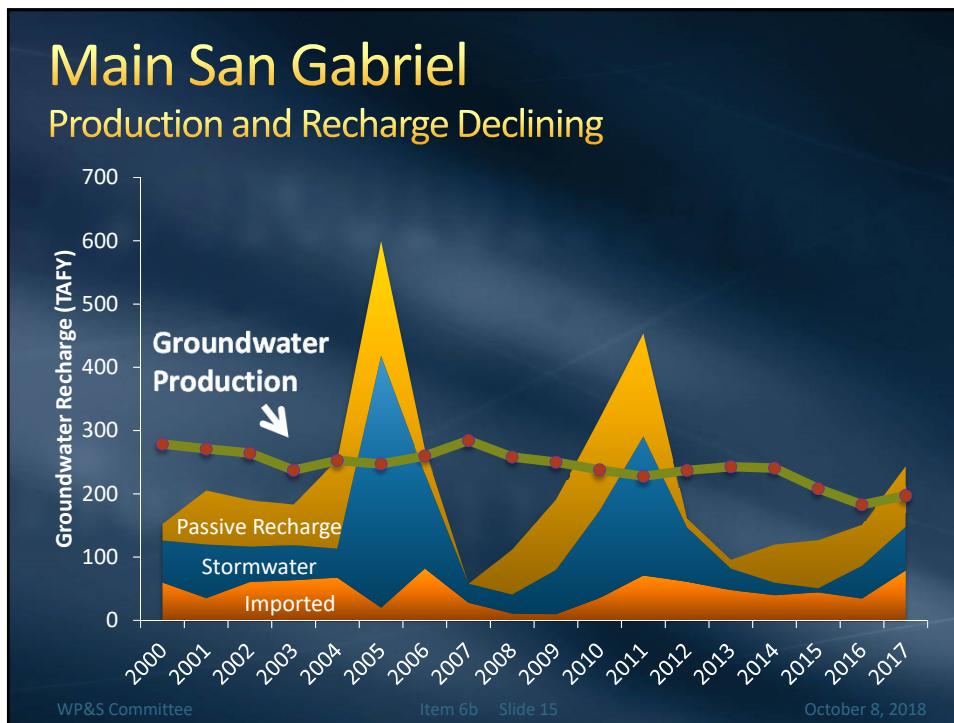
Item 6b Slide 11

October 8, 2018

Dashboard of Basin Health

Basin	Change in Storage Since 2000 (TAF)	Within Operating Range?	Change in Production since 2000 (%)
Chino & Cucamonga	-167	Yes	-21%
Orange County	+34	Yes	-12%
Central & West	-46	Yes	-16%
Raymond	-51	Yes	-39%
Main San Gabriel	-458	No	-29%
ULARA	-94	No	-23%
Fox Canyon GMA	-144	??	+9%
Others	-258	??	-8%





Summary

- Precipitation and recharge have declined in the last 20 years
- Loss in GW storage of 1.1 MAF from 2000-2017. 2018 storage expected to be about the same as 2017
- Current deficit in groundwater storage is about 0.8 MAF below end of healthy range
- Additional recharge needed to maintain existing levels of groundwater production
- Maintaining production is essential for achieving IRP local supply target

WP&S Committee

Item 6b Slide 17

October 8, 2018

