

AGENDA
JOINT PLANNING COMMITTEE
WITH BOARD OF DIRECTORS*
MUNICIPAL WATER DISTRICT OF ORANGE COUNTY AND
ORANGE COUNTY WATER DISTRICT
18700 Ward Street, Fountain Valley, California
July 25, 2018, 8:30 A.M.

Meeting in MWDOC Conference Room 101

* The meeting of the Joint Planning Committee will be conducted simultaneously with meetings of both Boards of Directors in order to allow all Board members to participate in the discussions and to ensure compliance with the Brown Act. Directors receive no additional compensation or stipend as a result of simultaneously convening this Board of Directors meetings. Items recommended for approval at this meeting will be placed on a future Board Agenda for approval by one or both agencies, as determined by the Committee.

PUBLIC COMMENTS - At this time, members of the public will be given an opportunity to address the Committee and the Boards concerning items within the subject matter jurisdiction of either Board. Members of the public may also address the Committee about a particular Agenda item at the time it is considered and before action is taken. The Committee requests, but does not require, that members of the public who want to address the Committee or the Boards complete a voluntary "Request to be Heard" form available from the Board Secretary prior to the meeting.

ITEMS RECEIVED TOO LATE TO BE AGENDIZED - Determine there is a need to take immediate action on item(s) and that the need for action came to the attention of the Districts subsequent to the posting of the Agenda. (Requires a two-thirds vote of those present, or a unanimous vote if less than two-thirds are present.)

ITEMS DISTRIBUTED TO THE COMMITTEE LESS THAN 72 HOURS PRIOR TO MEETING --

Pursuant to Government Code section 54957.5, non-exempt public records that relate to open session agenda items and are distributed to a majority of the Committee less than seventy-two (72) hours prior to the meeting will be available for public inspection in the lobby of the Districts' business office, located at 18700 Ward Street, Fountain Valley, California 92708, during regular business hours. When practical, these public records will also be made available on each of the District's Internet Web site, accessible at www.ocwd.com or www.mwdoc.com.

1. Update on California Water Fix
2. Status of imported water supplies
3. Status of MWDOC Orange County Water Reliability Study
4. Update on storage discussions within OCWD basin
5. Poseidon Huntington Beach Ocean Desalination Project Update
6. Next Committee Meeting - October 24

Accommodations for the Disabled. Any person may make a request for a disability-related modification or accommodation needed for that person to be able to participate in the public meeting by telephoning Janice Durant, OCWD District Secretary at 714/378-3233, or Maribeth Goldsby, MWDOC Board Secretary, at (714) 963-3058, or writing to Orange County Water District at P.O. Box 8300, Fountain Valley, CA, 92728, or Municipal Water District of Orange County at P.O. Box 20895, Fountain Valley, CA 92728. Requests must specify the nature of the disability and the type of accommodation requested. A telephone number or other contact information should be included so that District staff may discuss appropriate arrangements. Persons requesting a disability-related accommodation should make the request with adequate time before the meeting for the District to provide the requested accommodation.



Water Supply Conditions

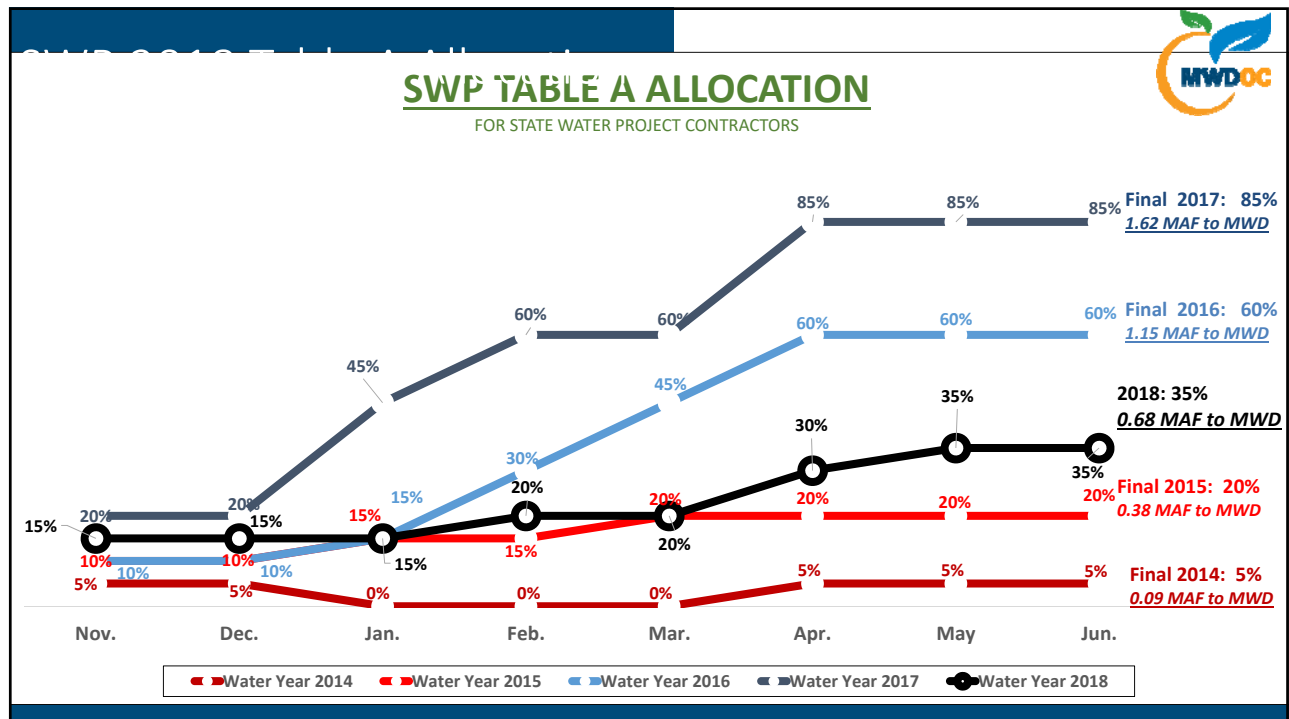
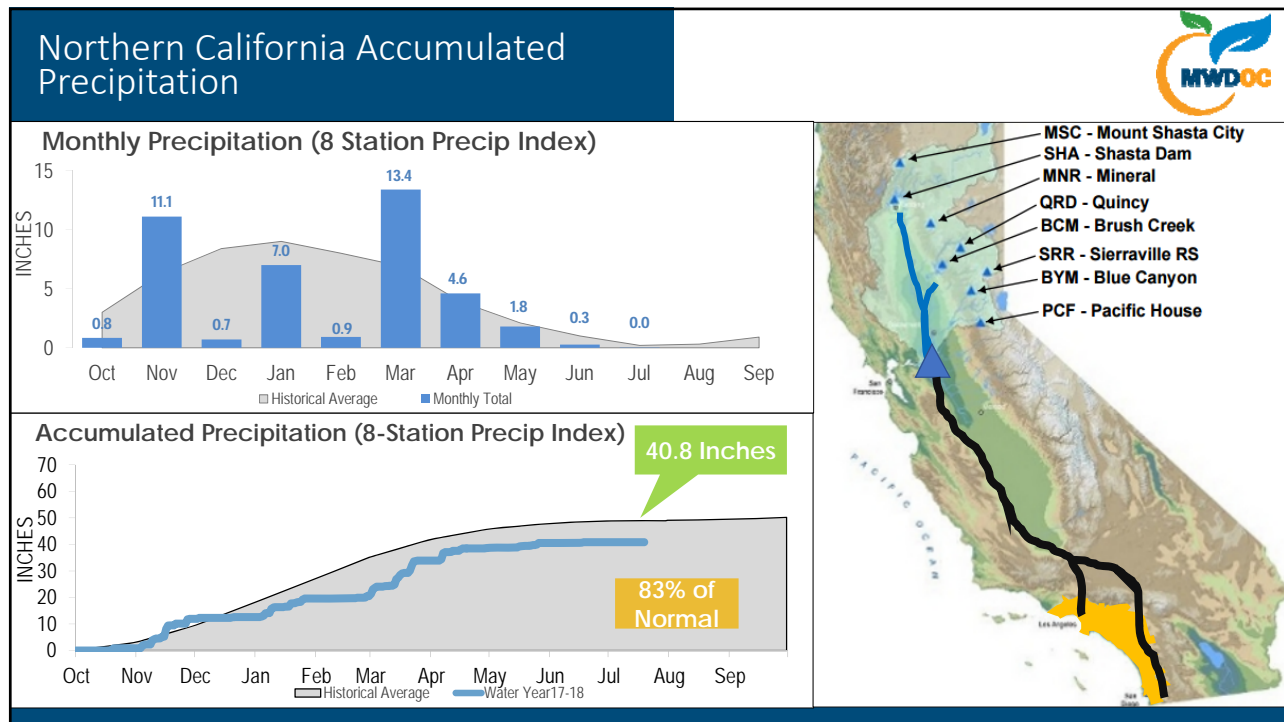
Kevin Hostert, Water Resources Analyst
Municipal Water District of Orange County

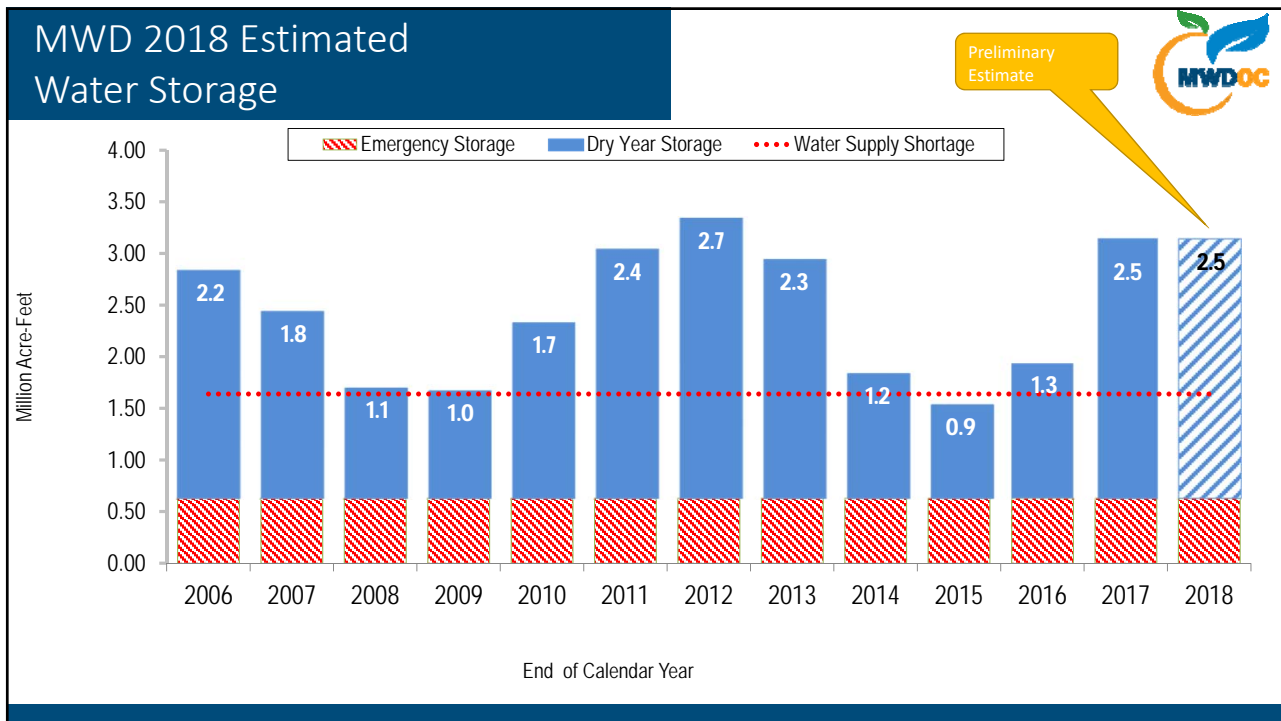
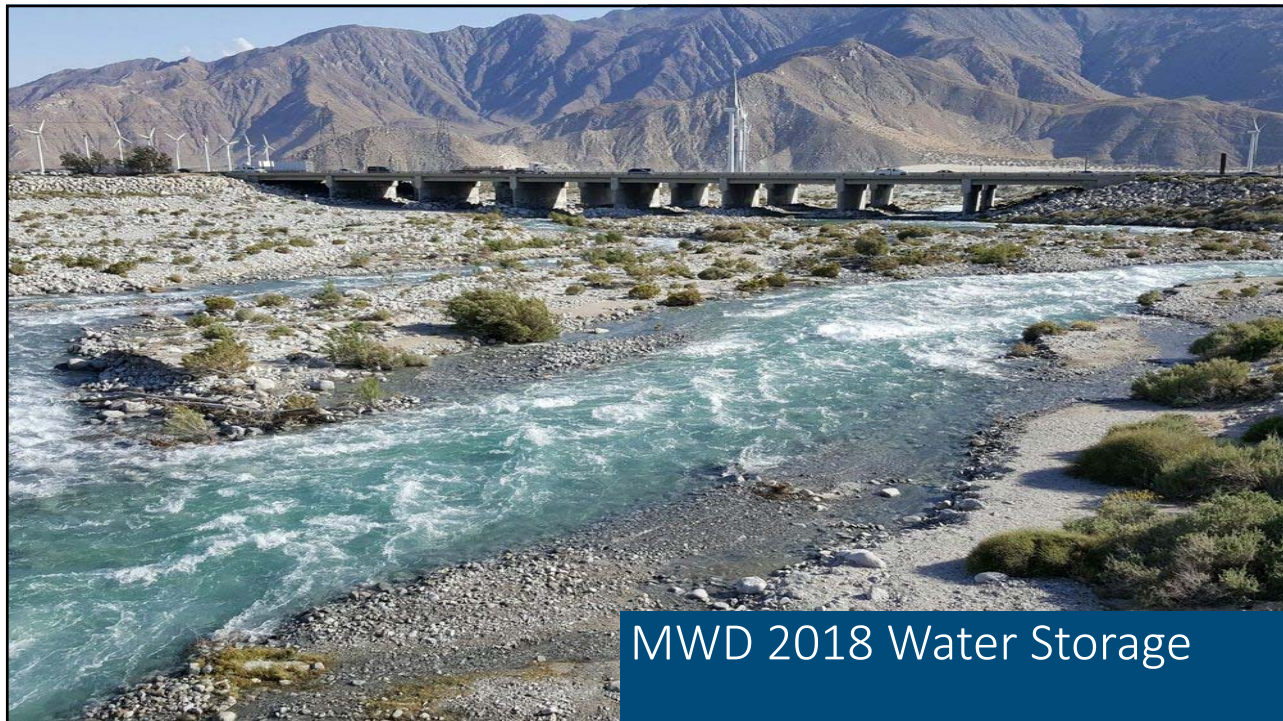
July 25th 2018



Regional Weather and Water Supply Conditions

Insight to regional weather conditions that affect California's water supply

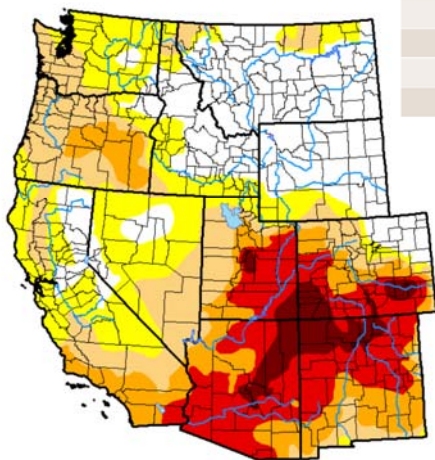




Drought Monitor



West



Week	Date	None	D0-D4	D1-D4	D2-D4	D3-D4	D4
Current	2018-07-17	26.88	73.12	51.73	32.70	19.52	4.73
Last Week	2018-07-10	28.98	71.02	50.28	32.09	19.90	4.81
3 Months Ago	2018-04-17	38.36	61.64	43.43	27.83	13.69	1.70
Start of Calendar Year	2017-12-26	46.57	53.43	28.18	5.32	1.52	0.00
Start of Water Year	2017-09-26	55.72	44.28	21.01	8.72	5.30	2.17
One Year Ago	2017-07-18	63.51	36.49	10.95	4.94	2.73	0.19

Intensity:

- D0 Abnormally Dry
- D1 Moderate Drought
- D2 Severe Drought
- D3 Extreme Drought
- D4 Exceptional Drought

The Drought Monitor focuses on broad-scale conditions. Local conditions may vary. See accompanying text summary for forecast statements.

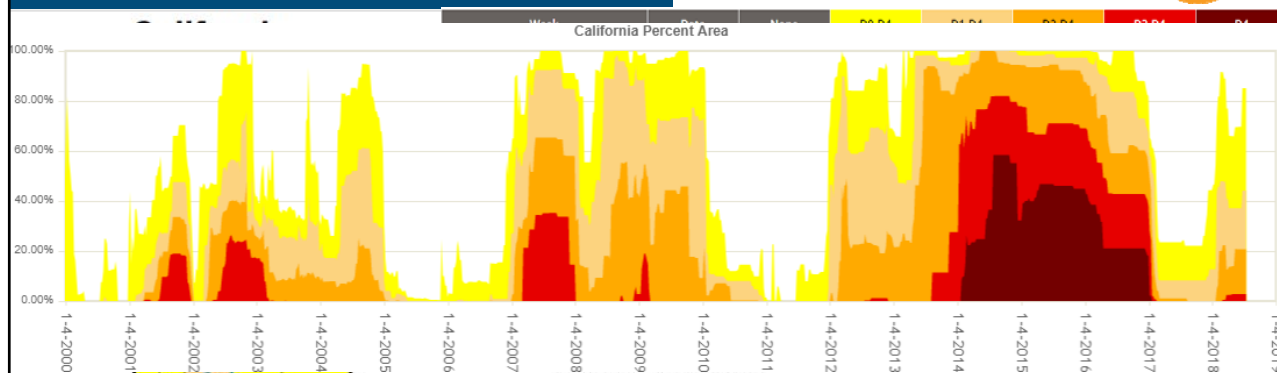
Author:

Curtis Riganti
National Drought Mitigation Center



<http://droughtmonitor.unl.edu/>

Drought Monitor California



The Drought Monitor focuses on broad-scale conditions. Local conditions may vary. See accompanying text summary for forecast statements.

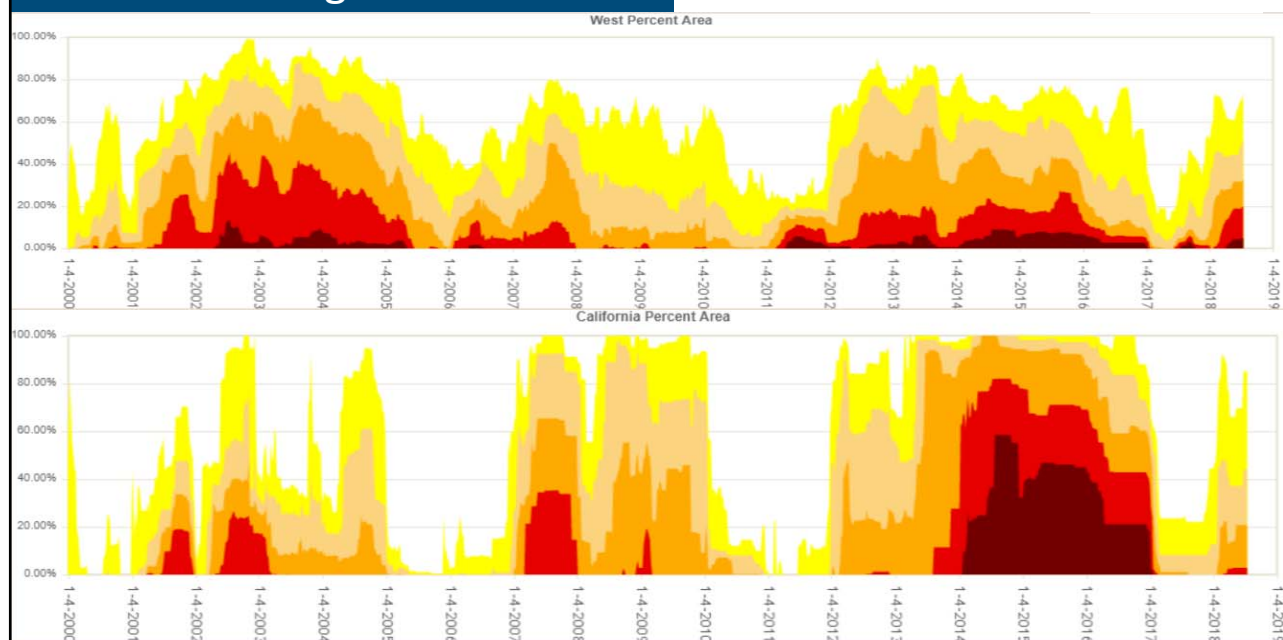
Author:

Curtis Riganti
National Drought Mitigation Center



<http://droughtmonitor.unl.edu/>

Historical Drought Monitor



Water Supply Conclusions WY 2017-18



- Accumulated Precipitation is **slightly below** the historical average in Northern California. Northern California Snowpack is **well below average**.
- Precipitation in Southern California is **well below average** for the 2017-18 water year. **Below average precipitation** has occurred **6 of the last 7 years**.
- Key State/Federal Reservoirs Levels are **at or above the historical averages** (excluding Lake Oroville).
- Table A allocation is at **35 %**, which is about **0.68 MAF** of water to MWD.
- Drought conditions have strengthen this year but are still relative weak compared to the last drought.
- The Colorado River System is still in **decline** and Lake mead could possibly see a shortage trigger at the start of CY 2020.

Questions???



Drought Severity Classification



Drought Severity Classification

Category	Description	Possible Impacts	Ranges				
			Palmer Drought Severity Index (PDSI)	CPC Soil Moisture Model (Percentiles)	USGS Weekly Streamflow (Percentiles)	Standardized Precipitation Index (SPI)	Objective Drought Indicator Blends (Percentiles)
D0	Abnormally Dry	Going into drought: short-term dryness slowing planting, growth of crops or pastures	-1.0 to -1.9	21 to 30	21 to 30	-0.5 to -0.7	21 to 30
D1	Moderate Drought	Some damage to crops, pastures Streams, reservoirs, or wells low, some water shortages developing or imminent Voluntary water-use restrictions requested	-2.0 to -2.9	11 to 20	11 to 20	-0.8 to -1.2	11 to 20
D2	Severe Drought	Crop or pasture losses likely Water shortages common Water restrictions imposed	-3.0 to -3.9	6 to 10	6 to 10	-1.3 to -1.5	6 to 10
D3	Extreme Drought	Major crop/pasture losses Widespread water shortages or restrictions	-4.0 to -4.9	3 to 5	3 to 5	-1.6 to -1.9	3 to 5
D4	Exceptional Drought	Exceptional and widespread crop/pasture losses Shortages of water in reservoirs, streams, and wells creating water emergencies	-5.0 or less	0 to 2	0 to 2	-2.0 or less	0 to 2