

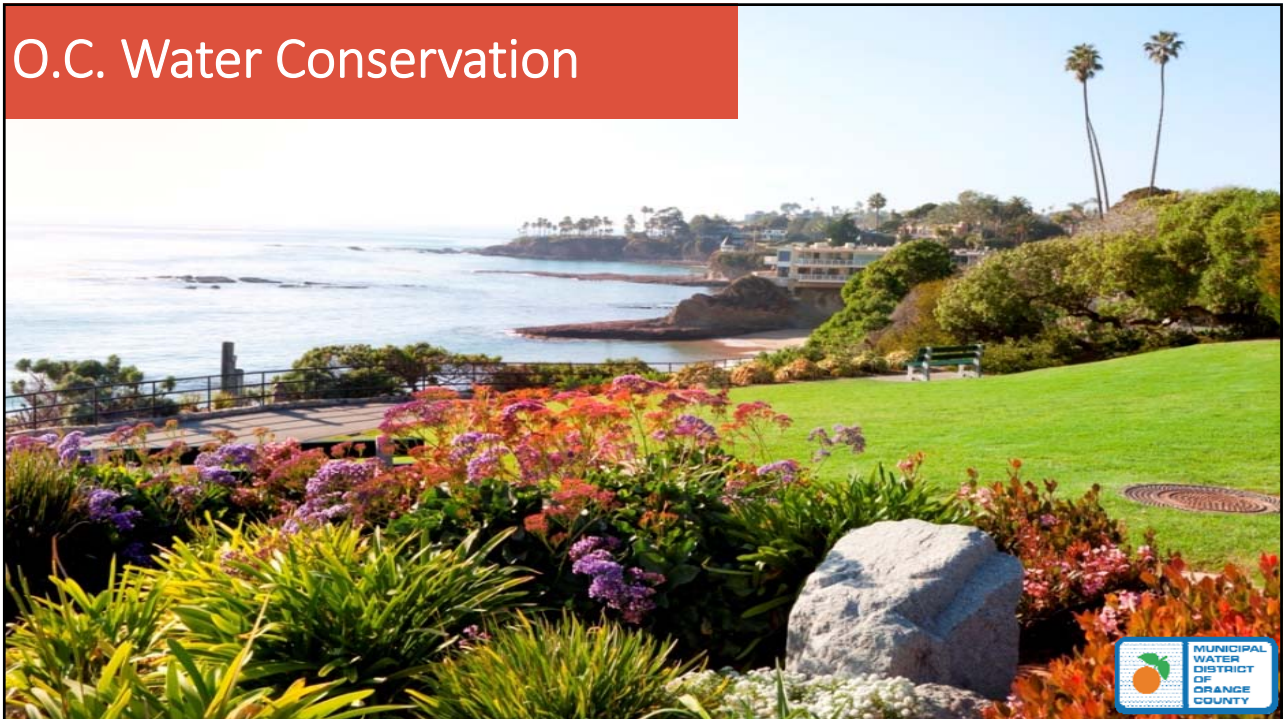


# Orange County Drought Performance & Water Supply Report

January 25, 2017

Municipal Water District of Orange County

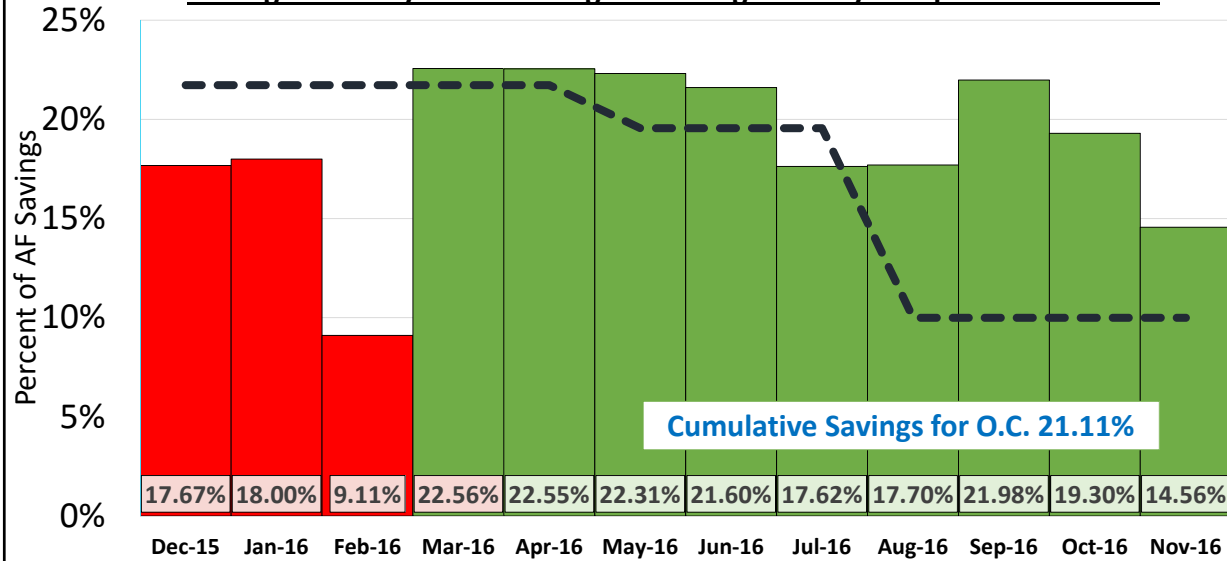
## O.C. Water Conservation



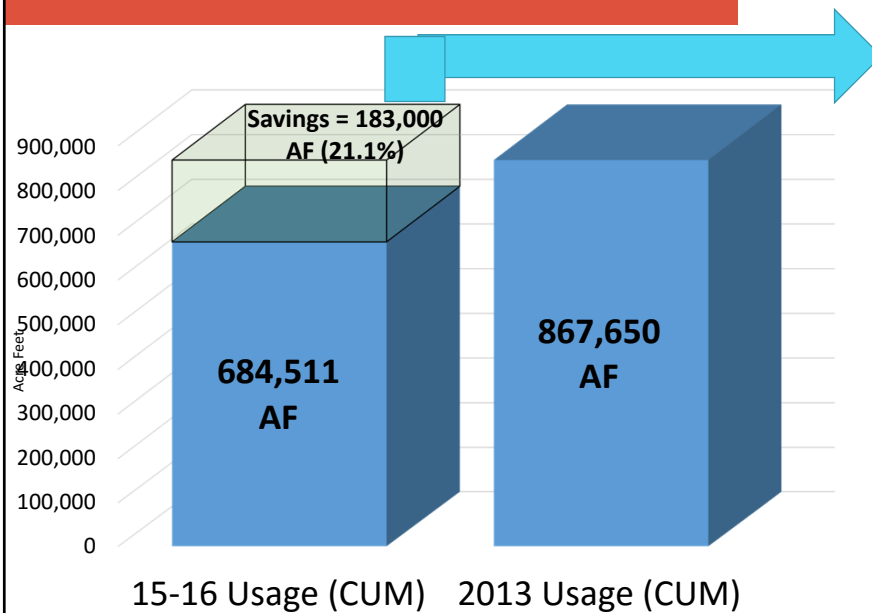
## O.C. Water Savings Reported to SWRCB



**Average Monthly Water Savings for Orange County Compared to CY 2013**



## O.C. Water Savings (Cumulative)

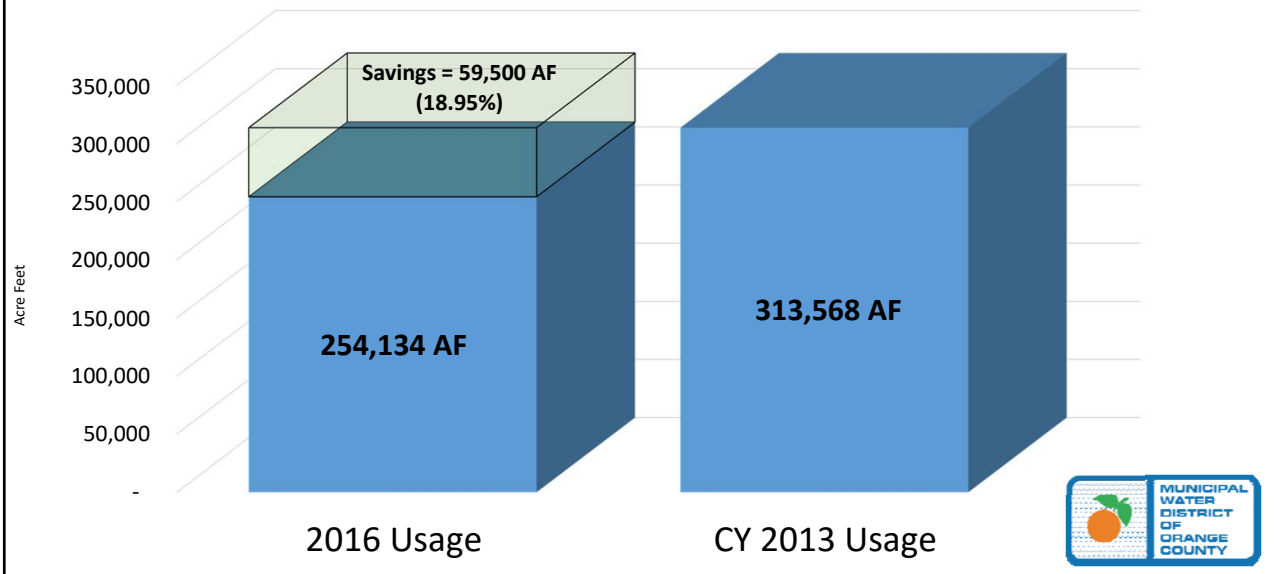


= Approx storage capacity of Lake Mathews

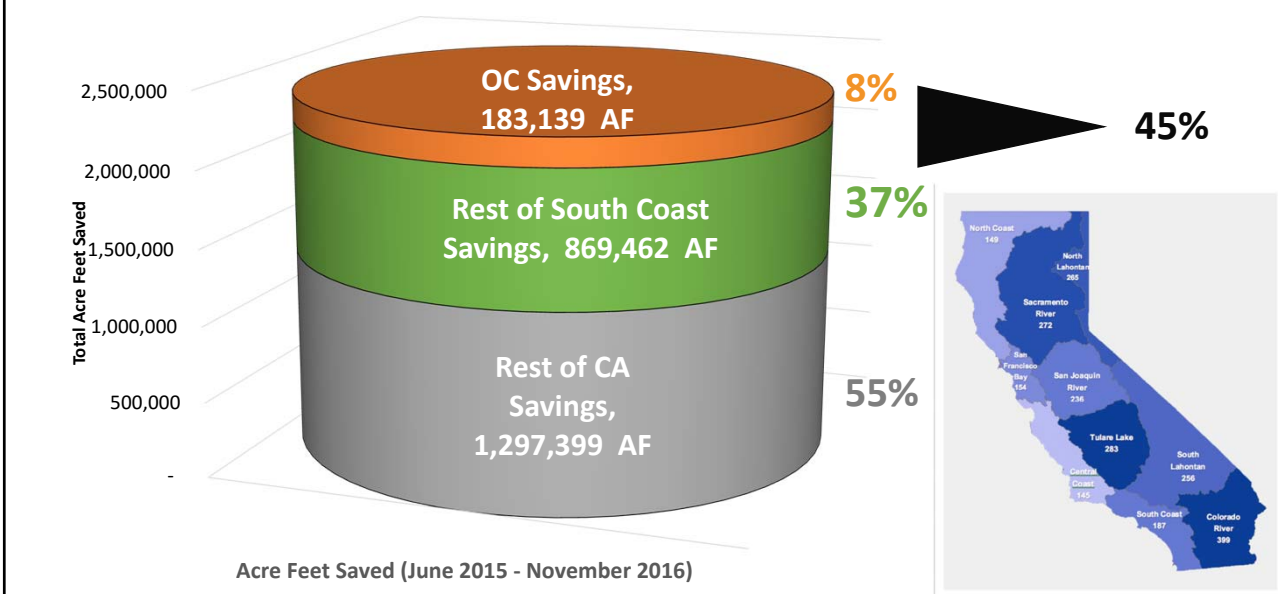
= \$169 Million Treated MWD



## O.C. Water Savings Since June 2016



## O.C. Water Savings VS California Savings



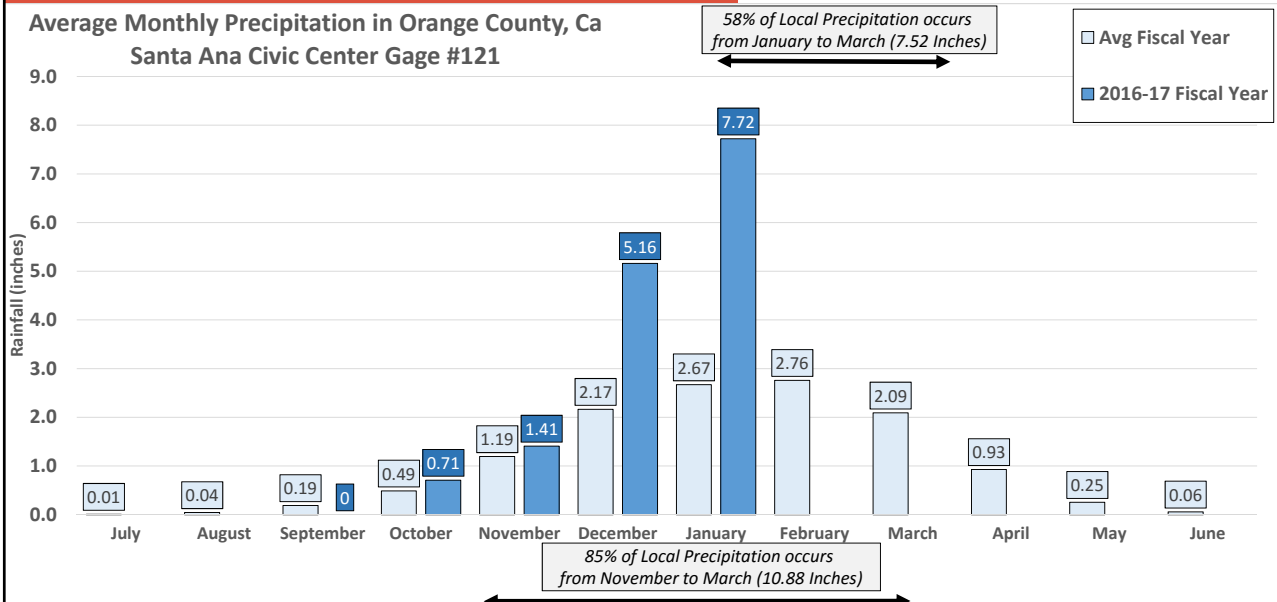
# Orange County Rain Report



## Historical Local Precipitation



**Average Monthly Precipitation in Orange County, Ca**  
Santa Ana Civic Center Gage #121

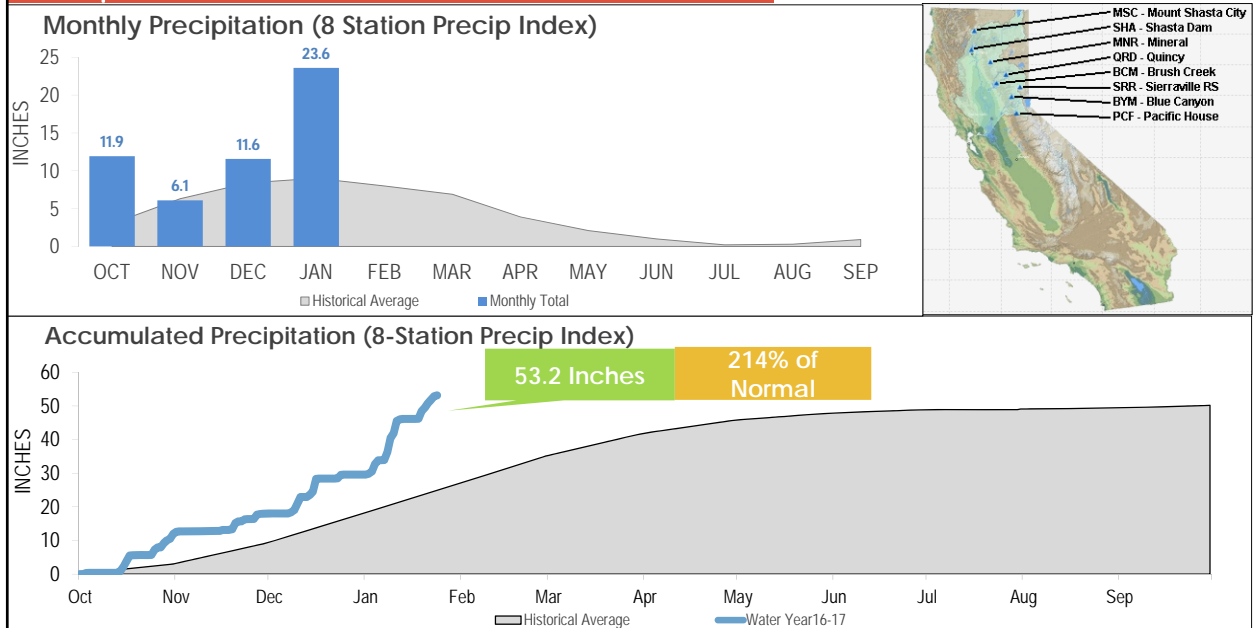


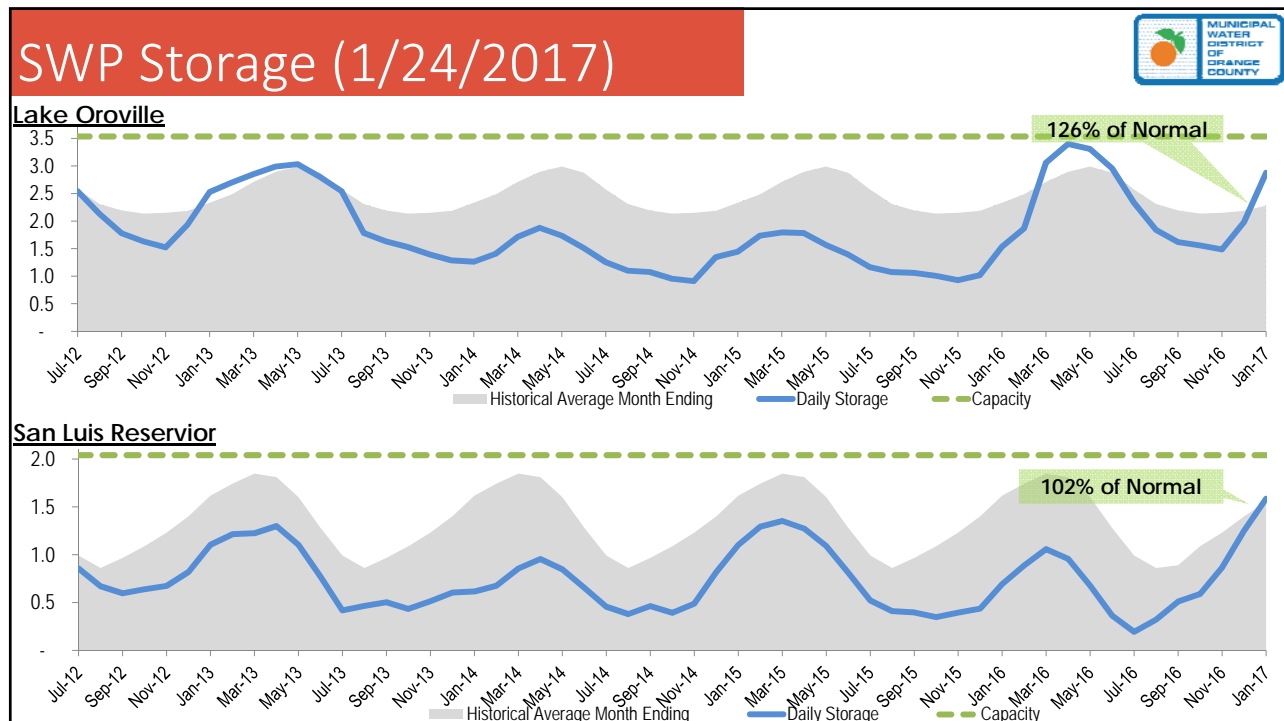
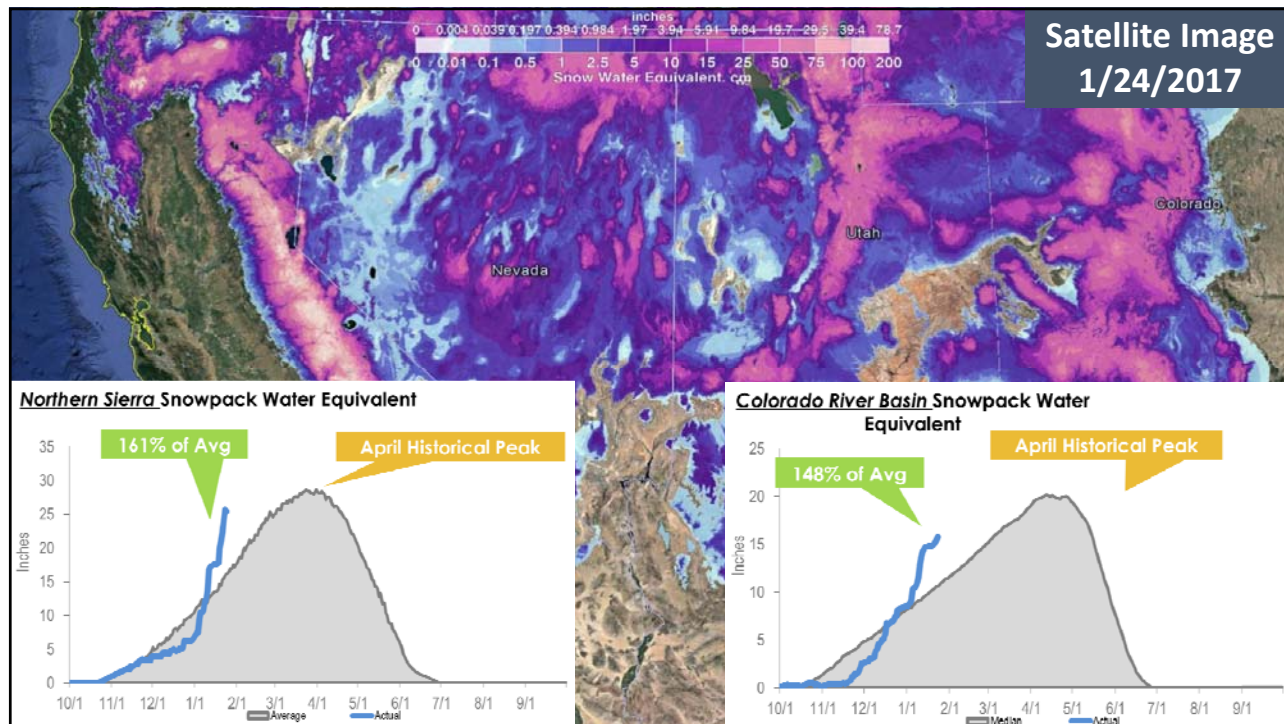


## Regional Weather and Water Supply Conditions



## Northern California Accumulated Precipitation





PRELIMINARY DATA  
SUBJECT TO REVISION WITHOUT NOTICE

EXECUTIVE OPERATIONS SUMMARY ON 1/23/2017

This summary can also be found at:

<http://www.water.ca.gov/swp/operationscontrol/docs/delta/deltaops.pdf>

#### SCHEDULED EXPORTS FOR TODAY

|                      |   |            |
|----------------------|---|------------|
| Clifton Court Inflow | = | 10,300 cfs |
| Jones Pumping Plant  | = | 4,100 cfs  |

State Water Project Informational Data can be found at:

<http://www.water.ca.gov/swp/operationscontrol/projectwide.cfm>

#### ESTIMATED DELTA HYDROLOGY

|                    |   |             |
|--------------------|---|-------------|
| Total Delta Inflow | ~ | 180,250 cfs |
| Sacramento River   | = | 74,400 cfs  |
| San Joaquin River  | = | 17,888 cfs  |

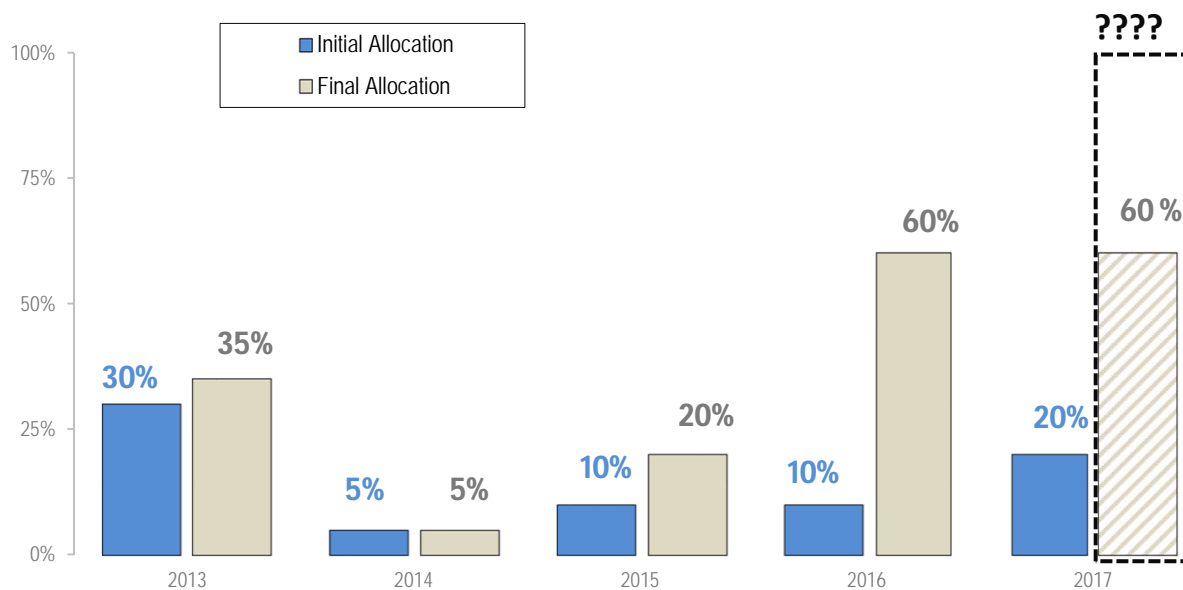
Data for previous 30-days is available at:

<http://www.water.ca.gov/swp/operationscontrol/docs/delta/DeltaWQ.pdf>

#### DELTA OPERATIONS

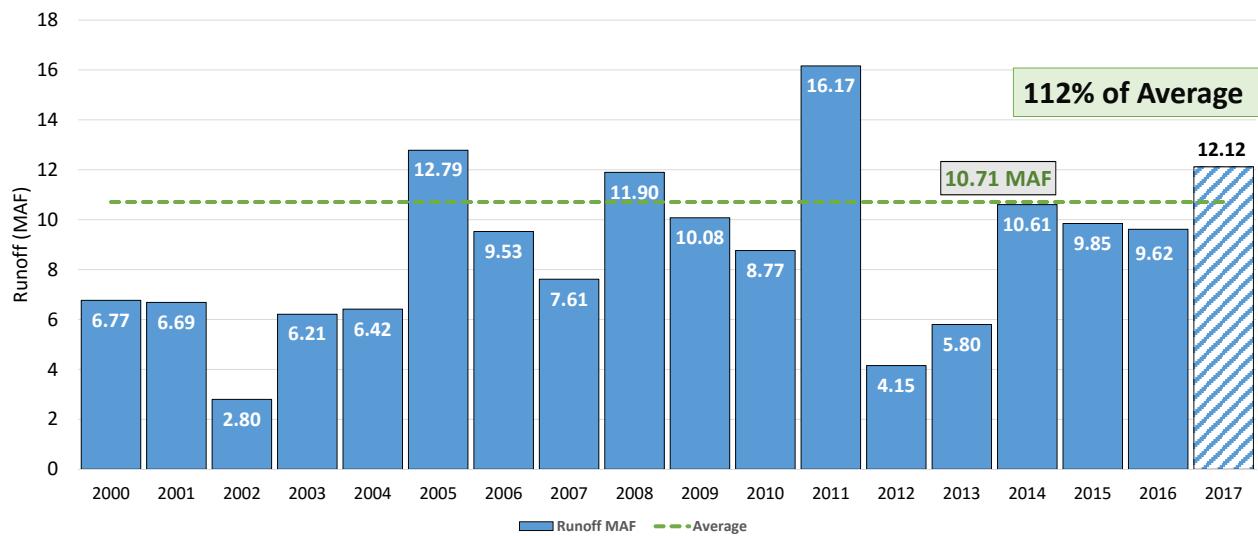
|  |   |                    |
|--|---|--------------------|
| Delta Conditions                         | = | Excess             |
| Delta x-channel Gates (% of day is open) | = | 0%                 |
| Outflow Index                            | ~ | 181,200 cfs        |
| % Inflow Diverted                        | = | 6.9% (14-day avg)  |
| X2 Position                              | < | 56 km              |
| Controlling Factor(s)                    | = | Available Capacity |

## 2016-17 SWP Table Allocation

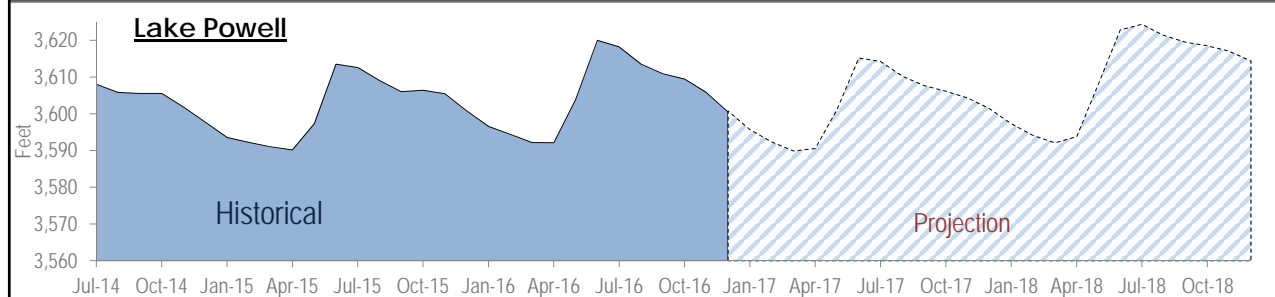
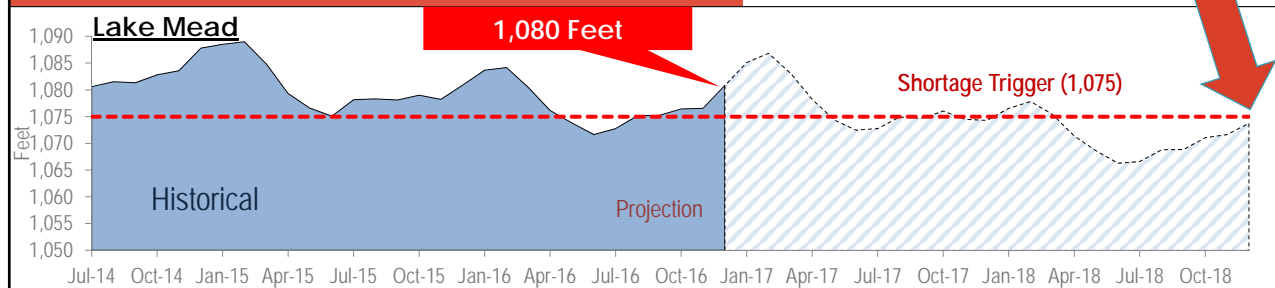


## Colorado River Basin Outlook

Lake Powell Unregulated Historical Inflow

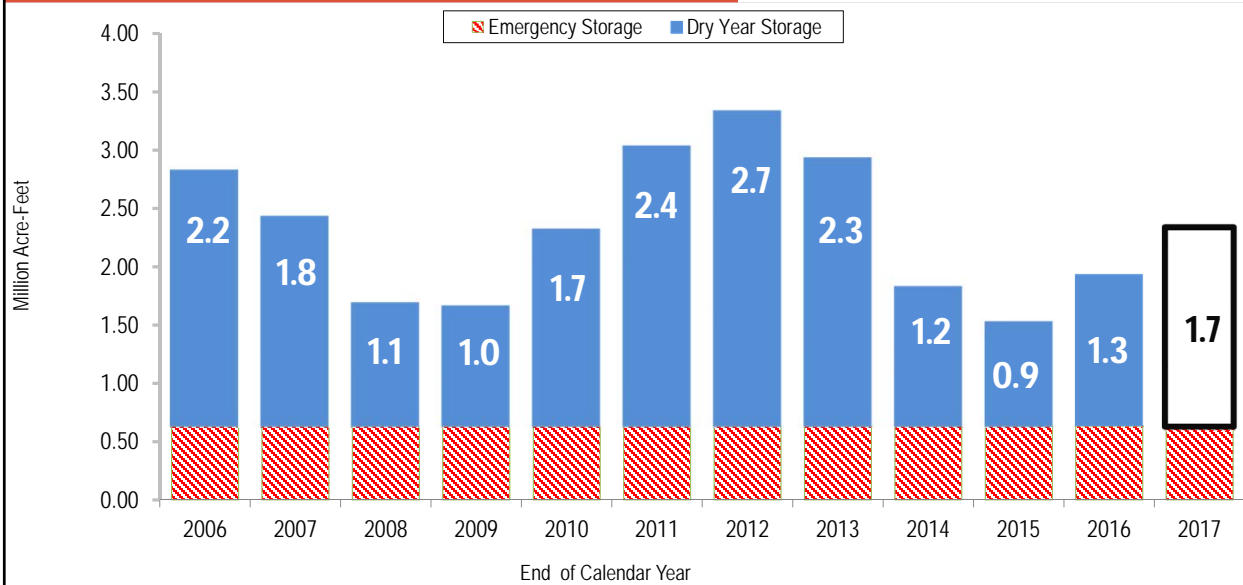


## Lake Mead projected Levels



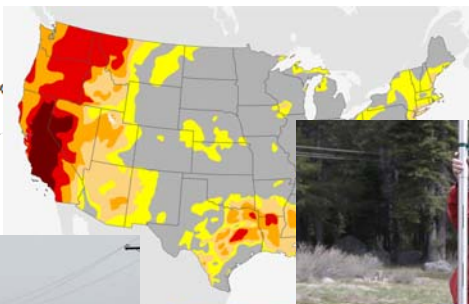


## MWD Preliminary Outlook



## Drought Information

**California's Drought Isn't Over Yet**  
Yes, it's been raining. No, the drought.

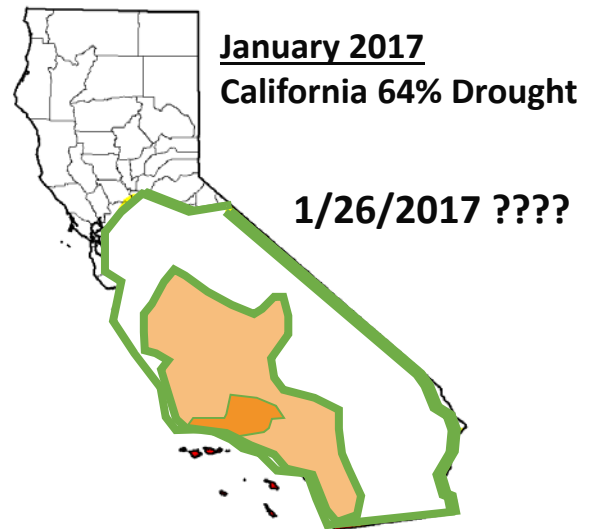
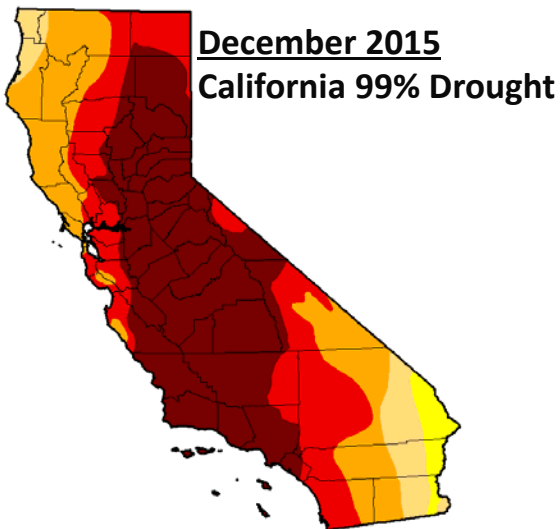


# The Great California Drought

- 🔹 Drought conditions begin in January 2012.
- 🔹 January 17<sup>th</sup> 2014 Governor Jerry Brown Declares Drought State of Emergency. Californians are ask to voluntary conserve 20% of their water use.
- 🔹 December 2015 a study released reporting that the current drought is the worst in 1,200 years.
- 🔹 April 1<sup>st</sup> 2015 Governor Jerry Brown issued a new Executive Order that directs the SWRCB to impose restrictions on urban water suppliers to achieve a statewide 25 percent reduction on potable water usage. MWD Board also approves an water supply allocation.
- 🔹 March 2016 El Nino finally arrives to Northern California bring precipitation above average for the first time in 4 years and ending state mandatory regulations. The drought conditions improve but still persist.
- 🔹 January 2017 multiple storm brings large quantities of rain and snow to California, Northern California drought ends while conditions in the central and south greatly improve.



## California Drought Monitor (Dec-2015 VS Jan-2017)



## Water Supply Conclusions

- 💧 Orange County residents continue to save large amounts of water compared to CY 2013.
- 💧 Accumulated Precipitation is **well above** the historical average in North California. Northern California Snowpack is **above average**.
- 💧 Precipitation in Southern California is **above average** for the 2016-17 water year. **Below average precipitation** has occurred the last **5 Water Years**.
- 💧 There still a lot of winter to go and more potential for wet weather.
- 💧 Key State/Federal Reservoirs Levels Continue to **improve** and our hovering around the top of their conservation pools.
- 💧 Table A allocation has increased to **60 %**, which is about **1.2 MAF** of water to MWD. With good hydrological conditions allocation could be raised in the future.
- 💧 Drought conditions are weakening in Southern/Central California and are not present in Northern California.
- 💧 The Colorado River System is still in **decline** and Lake mead could possibly see a shortage trigger at the end of CY 2018.



## Questions

