

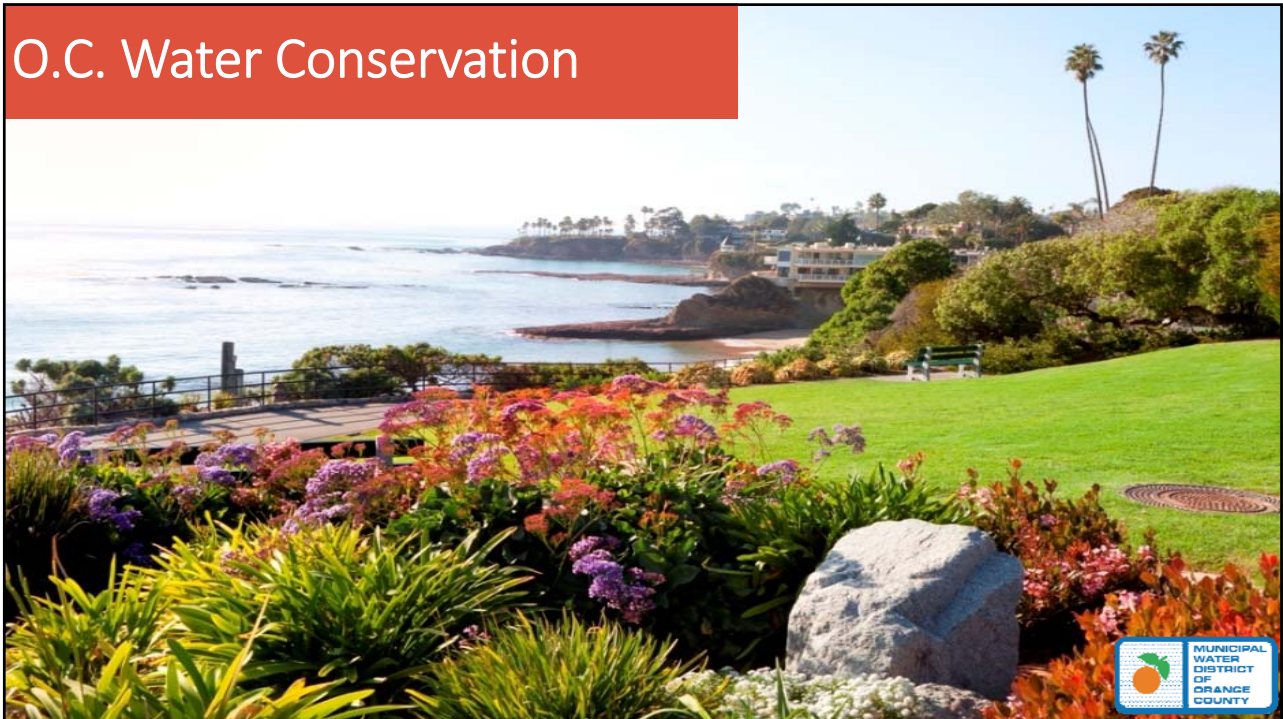


Orange County Drought Performance & Water Supply Report

March 22, 2017

Municipal Water District of Orange County

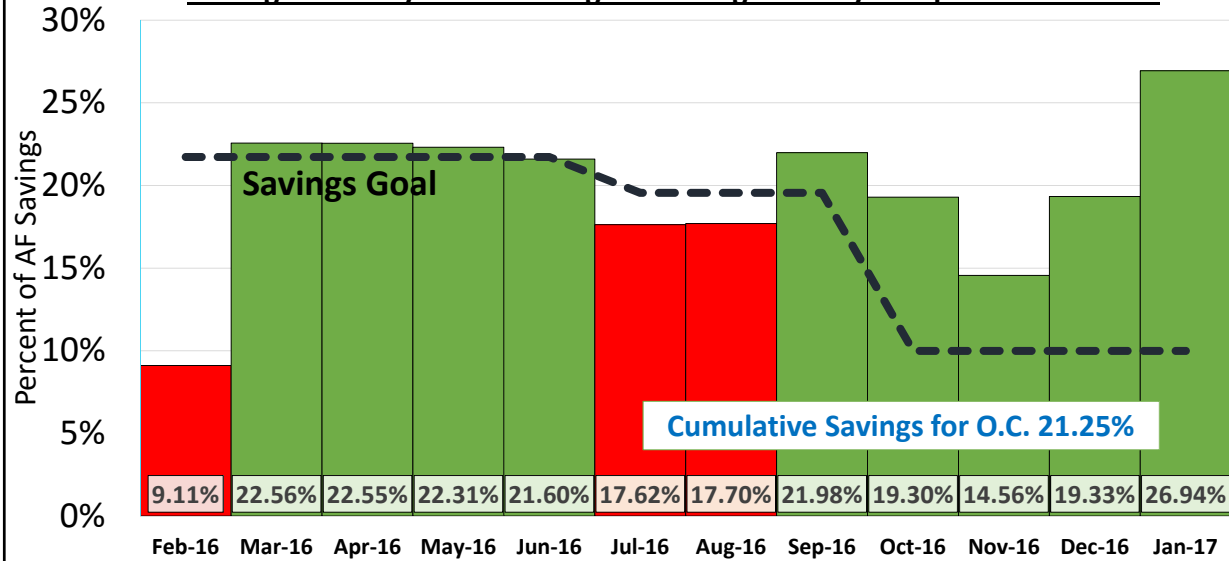
O.C. Water Conservation



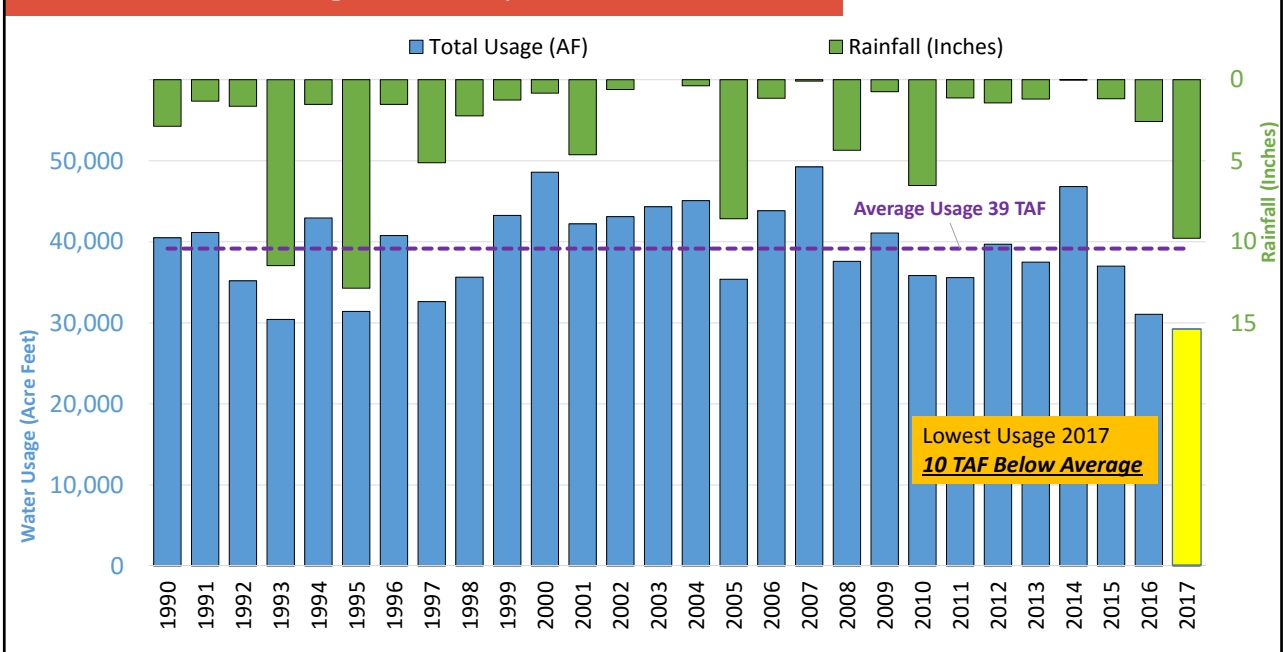
O.C. Water Savings Reported to SWRCB



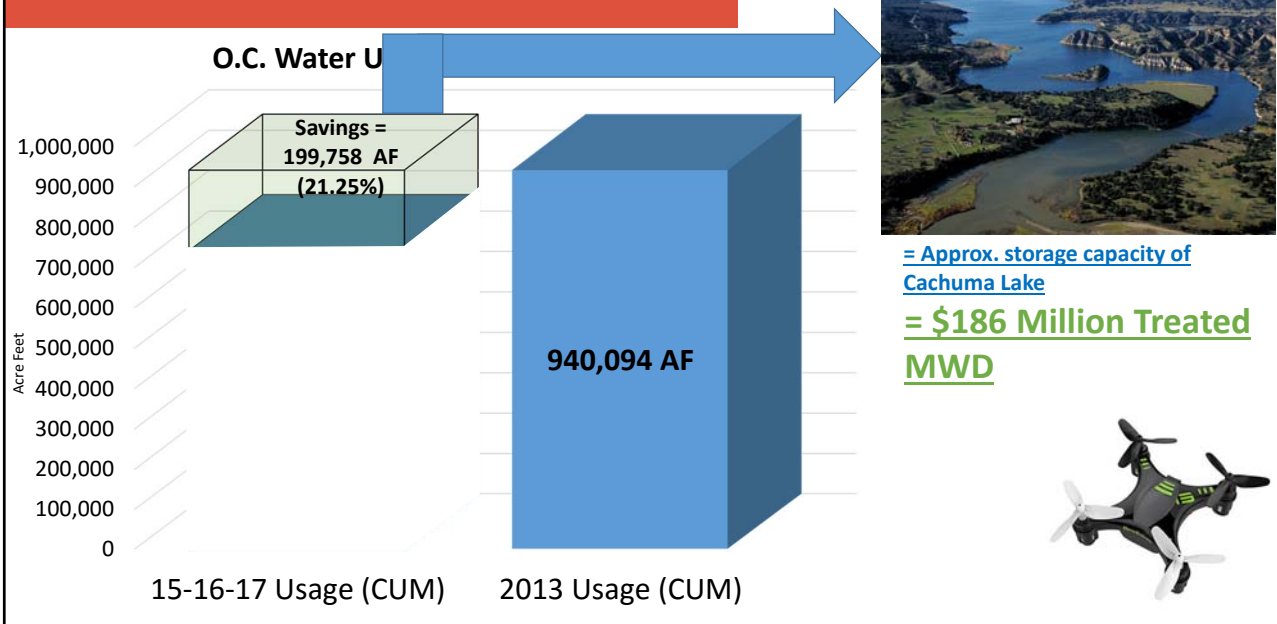
Average Monthly Water Savings for Orange County Compared to CY 2013



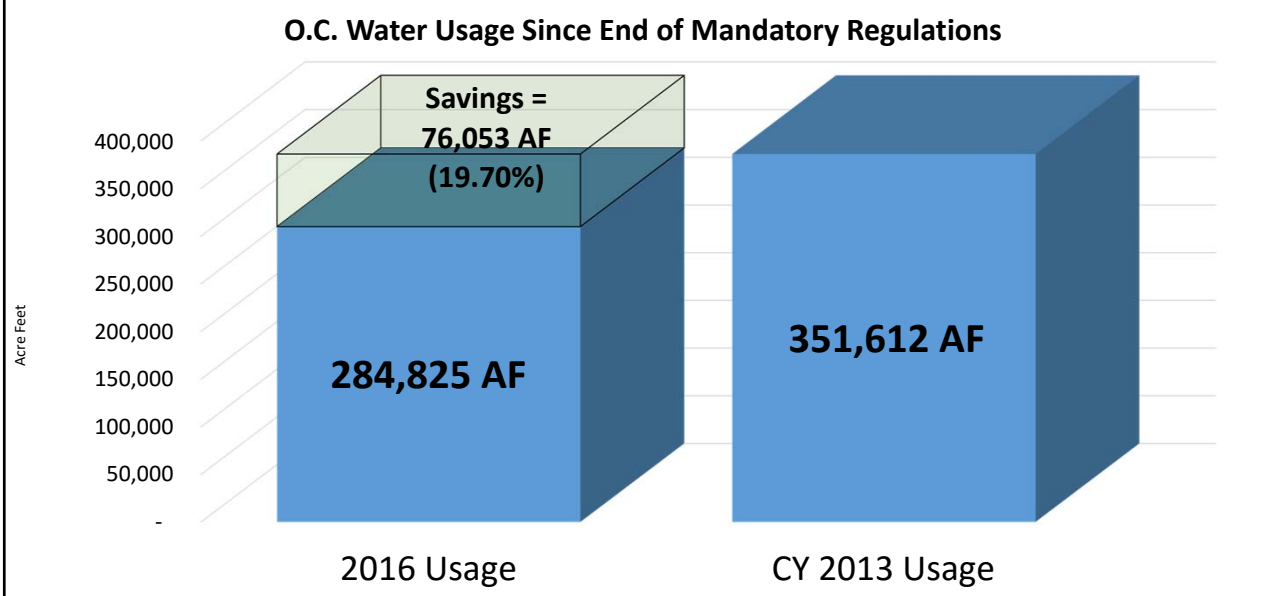
O.C. Water Savings January 2017



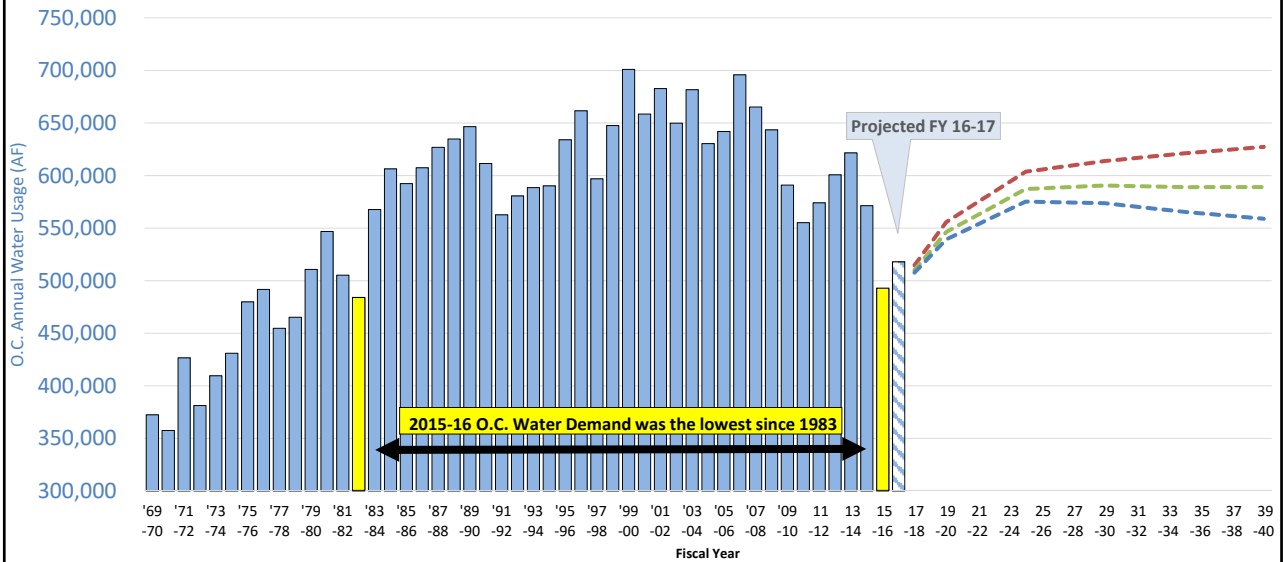
O.C. Water Savings (Cumulative)



O.C. Water Savings Since June 2016 (Cumulative)



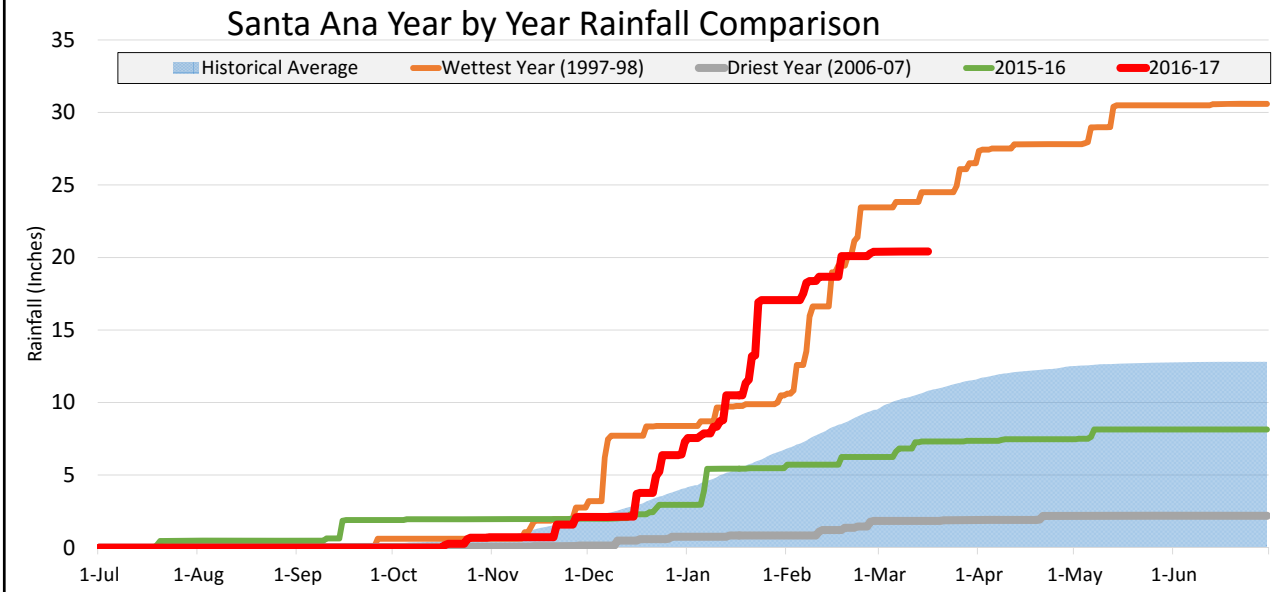
O.C. Water Usage FY 2016-17 Outlook



Orange County Rain Report



Historical Local Precipitation



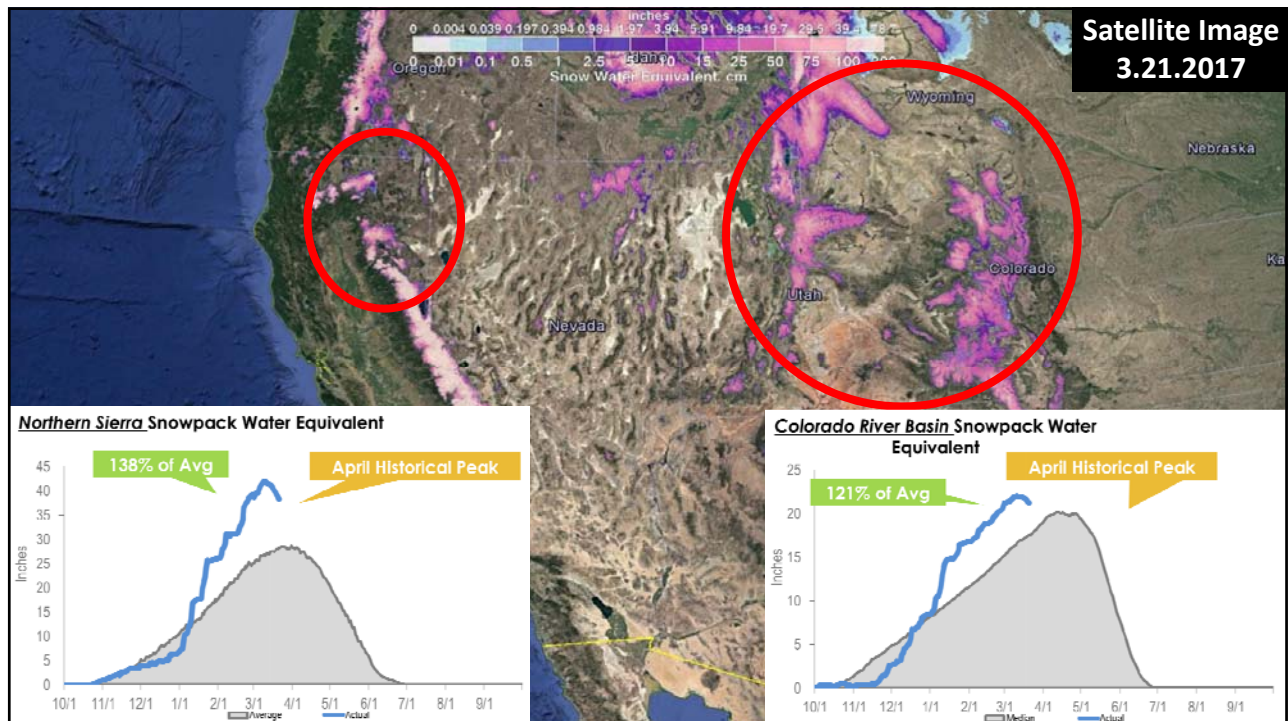
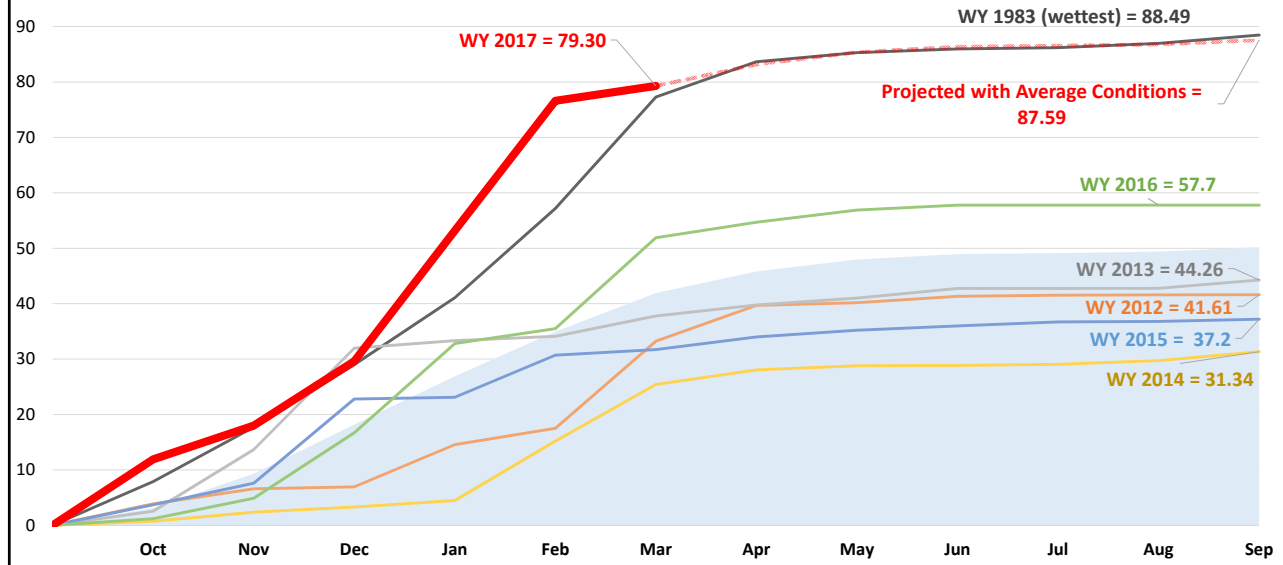
Regional Weather and Water Supply Conditions



Northern California Accumulated Precipitation

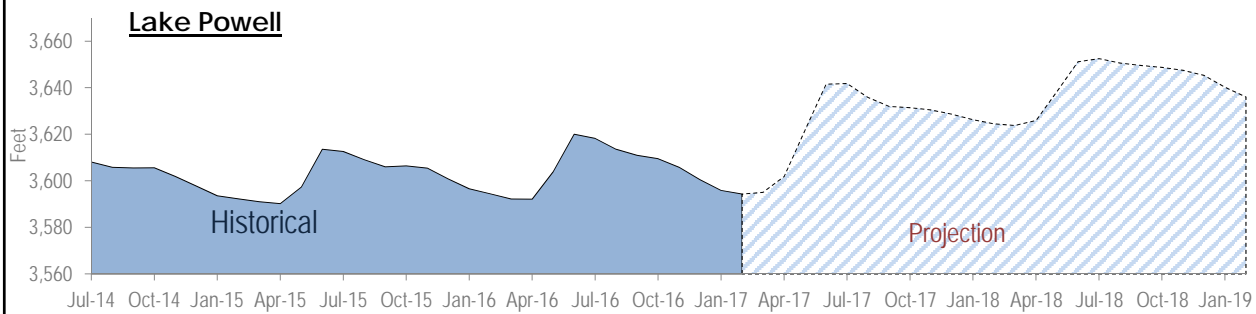
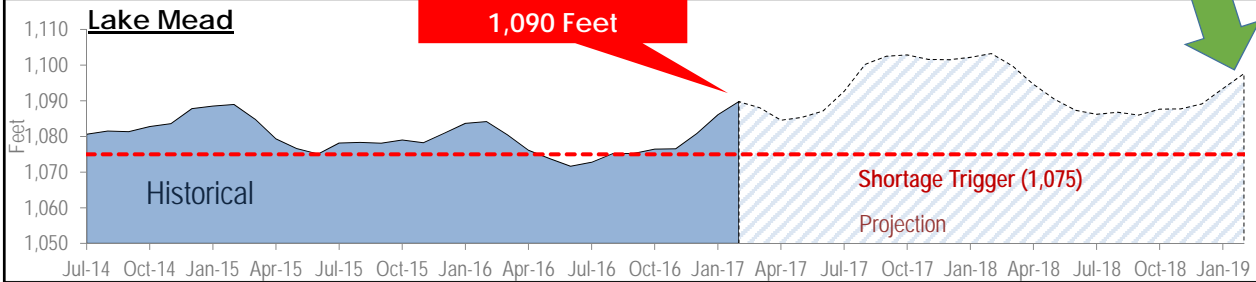


8 Station Index all Time Month by Month Cumulative Totals

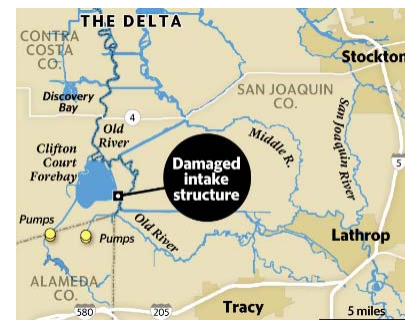


Lake Mead Projected Levels

23 Ft. Over Trigger



SWP Issues

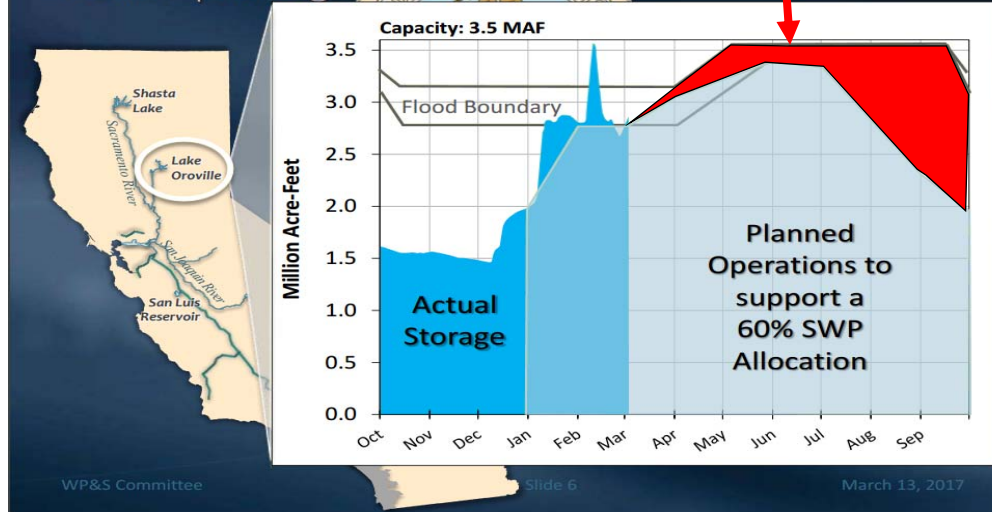


Lake Oroville Situation

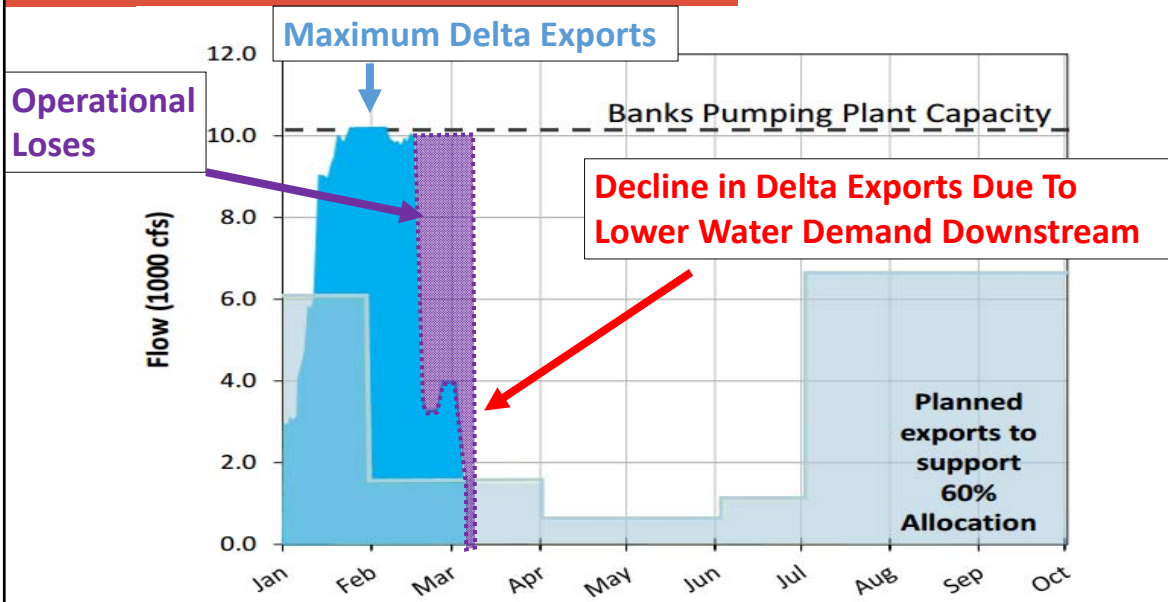
Does Spillway Fix hinder Water Operations????

Why Hasn't the SWP Allocation Increased?

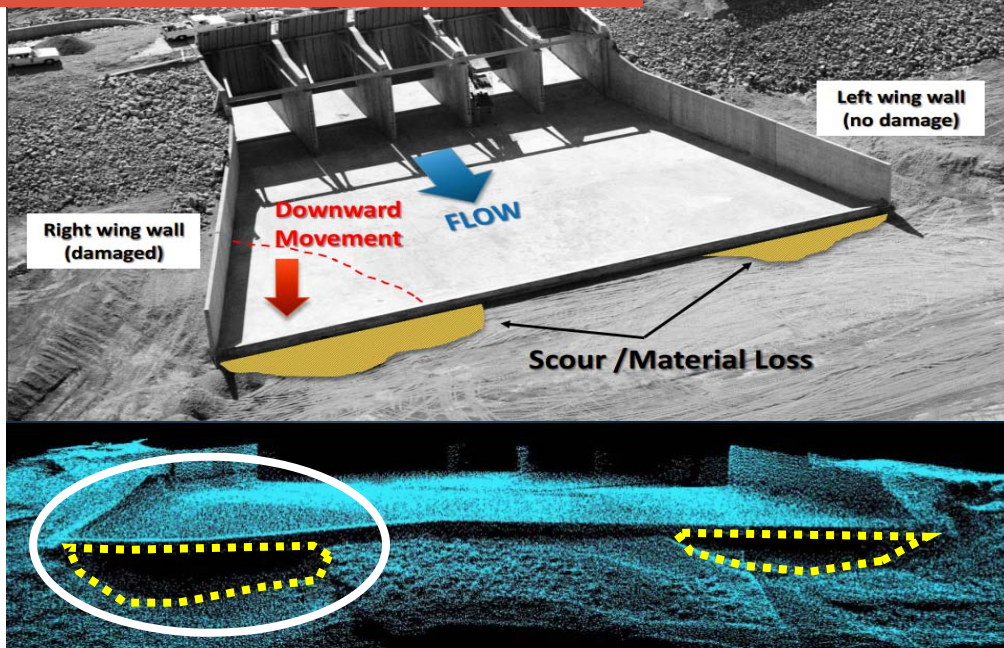
Oroville Operating Criteria



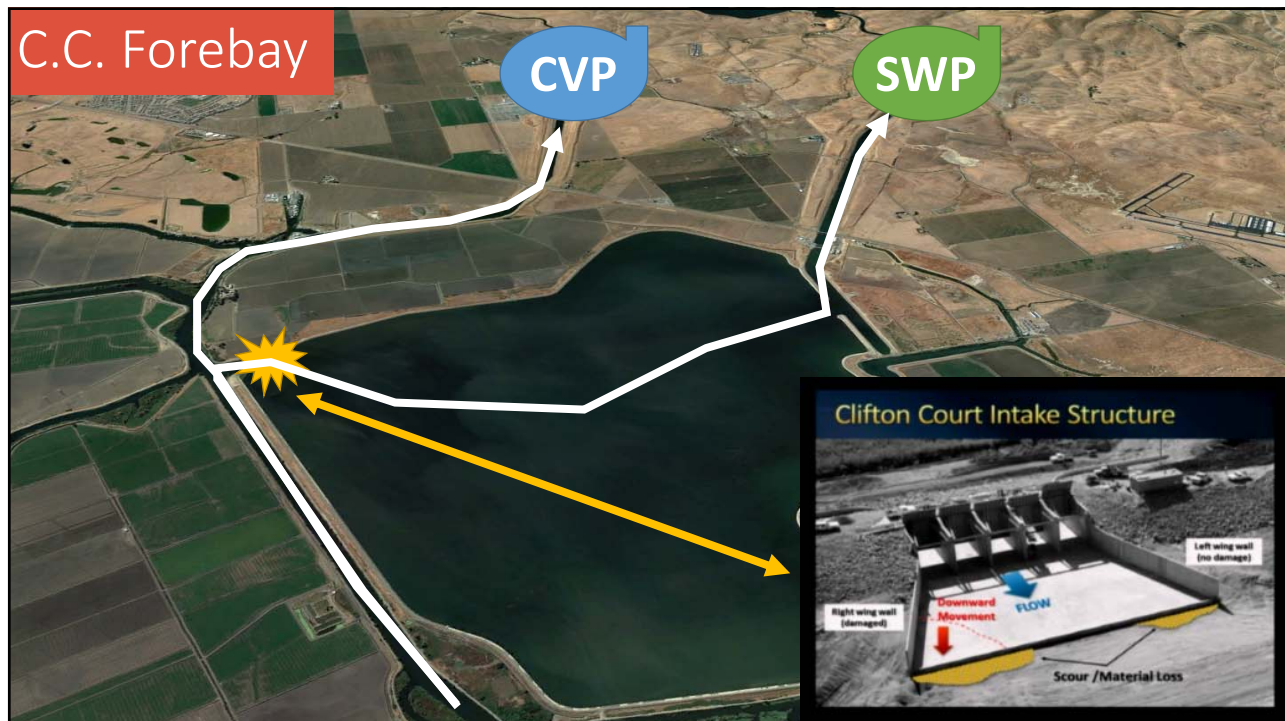
San Luis and Delta Pumping



Clifton Court Forebay



C.C. Forebay



SWP Summary

- 💧 SWP Table A Allocation is set at 60% until further evaluations can be down on operations at Oroville Dam.
- 💧 San Luis Reservoir is now full, delta exports have reduced due to low water demand downstream of Sam Luis.
- 💧 MWD is maximizing all SWP water into storage in order to maximize gains on the CRA system.
- 💧 Banks Pumping plant is shut down in order to make repairs to the Clifton Court Forebay Inflow structure (30 to 45 Days).



Questions