

## Update on State Water Project Activities

Municipal Water District of Orange County  
Board Workshop  
April 5, 2017

Demetri Polyzos  
Resources Implementation Section

## SWP By The Numbers



>700 Miles of canals,  
tunnels, and pipelines

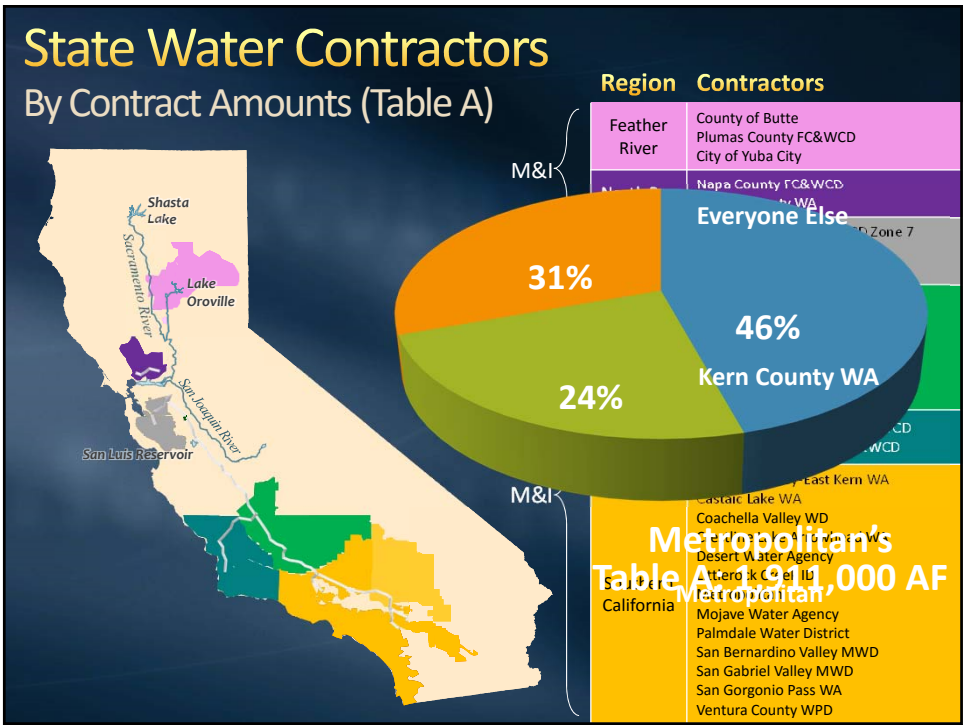
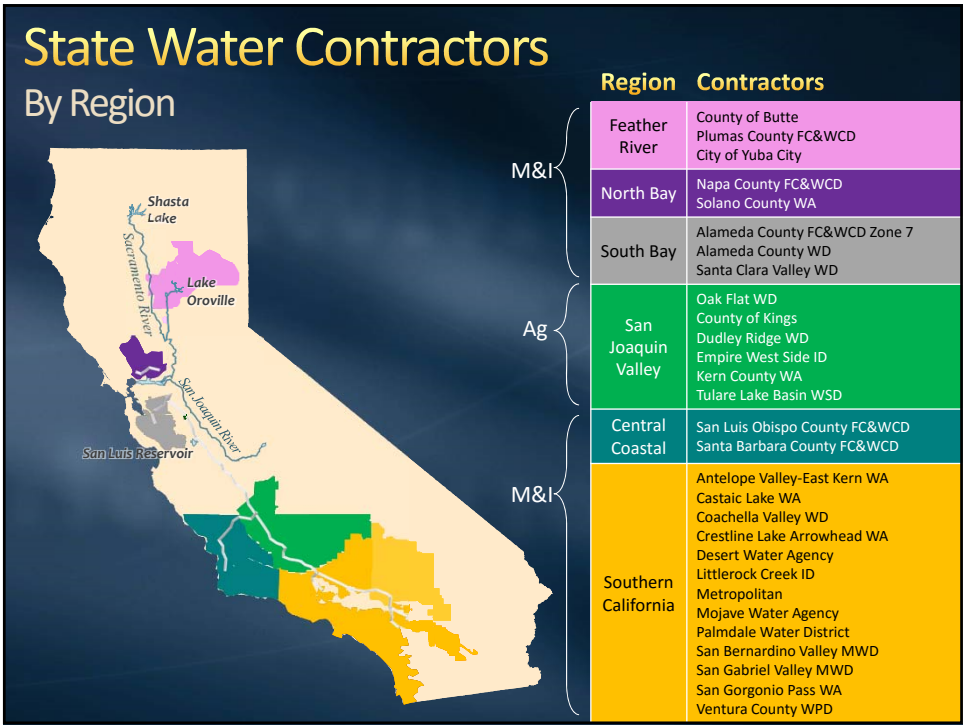
20 Pumping plants

5 Hydroelectric power  
plants

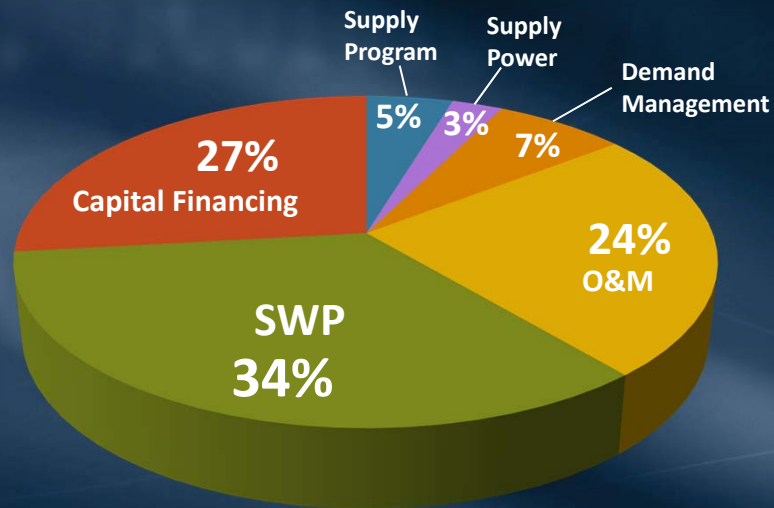
4 Pumping generating  
plants

34 Storage facilities

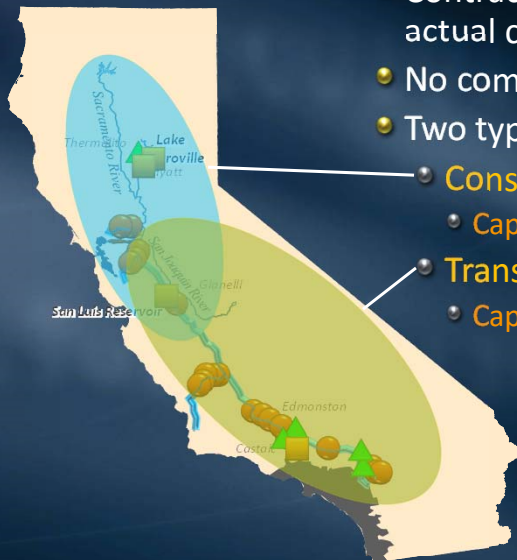
~1,200 Employees  
Needed to  
Operate



## SWP – MWD's Largest Annual Expenditure FY 2016-2017



## Recovery of Water System Costs



- Contractual obligation to repay actual costs
- No commodity charge for water
- Two types of charges:
  - **Conservation**
    - Capital - O&M
  - **Transportation**
    - Capital – O&M – Power

## Allocation of Water System Costs



**Conservation**

**Table A**



**Transportation**

**Proportional  
Use of  
Facilities  
Factor (PUFF)**



**Power**

**Energy/AF**

## Current FY 2016/17 SWP Net Charges Projection

(\$ millions)

**\$513**

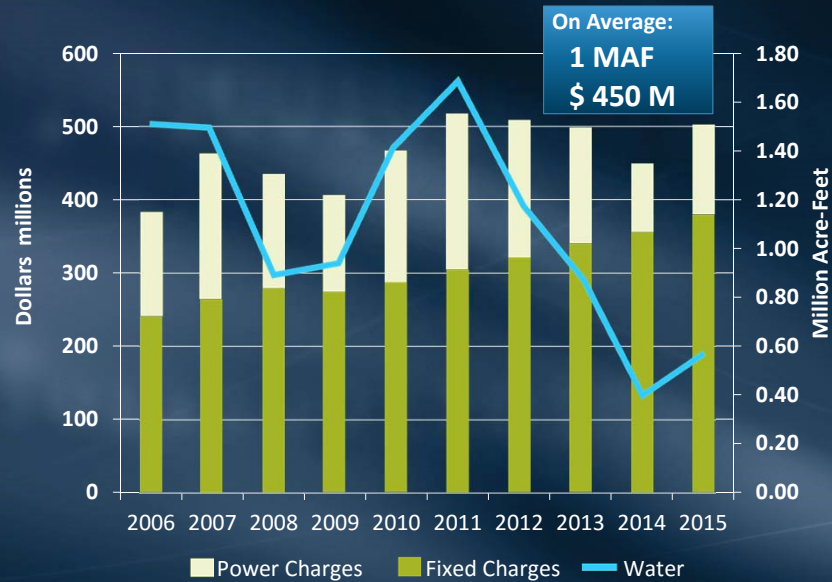
**\$ 152  
Variable**

**\$ 225  
O&M**

**\$ 137  
Capital**

**Projected Water Delivery @ 1.24 MAF**

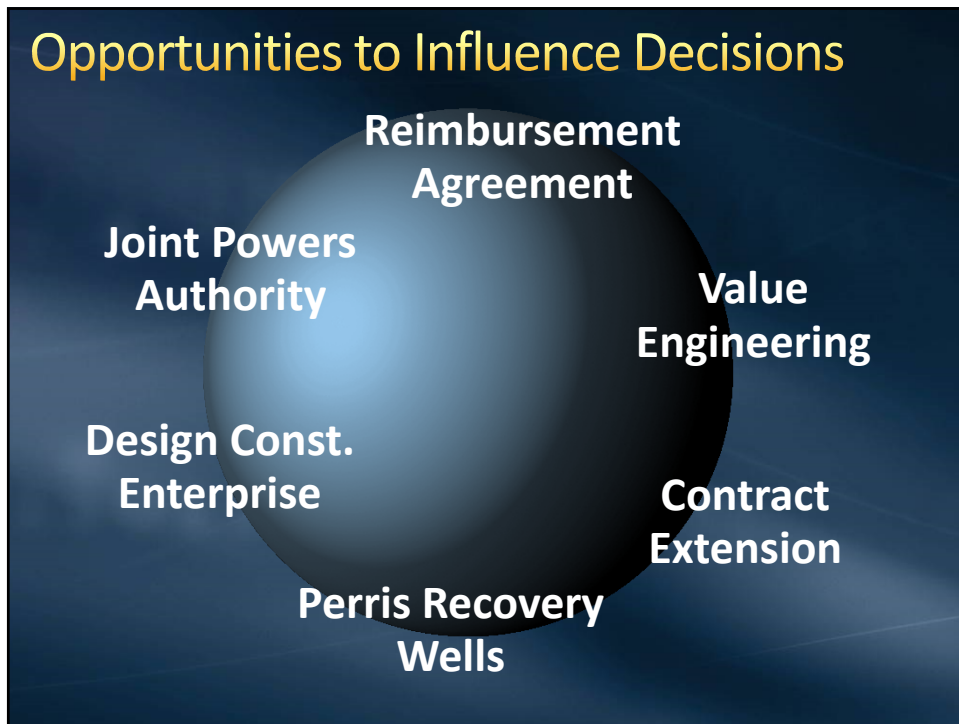
## SWP Charges and Water Receipts



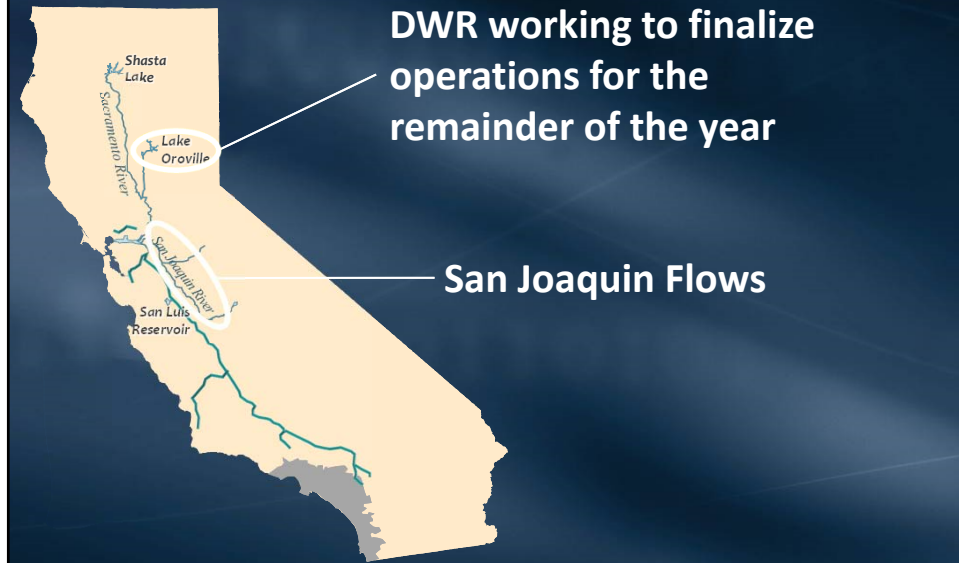
## Actions to Control Cost Growth

- Improved annual budget & project cost control processes
  - Operations Maintenance and Engineering Committee
  - Richardson Audit
- Increased oversight of regulatory compliance and habitat restoration activities
  - Delta Compliance Programs Committee





## SWP Allocation Continues to be 60%



## Other Factors Considered in SWP Allocation

### Delta Operations



## San Joaquin River Flows



### Flows expected to remain high through Spring

- Above Normal Snowpack
- CVP Reservoirs already making flood control releases
- Similar conditions as 2011 where high flows continued into July

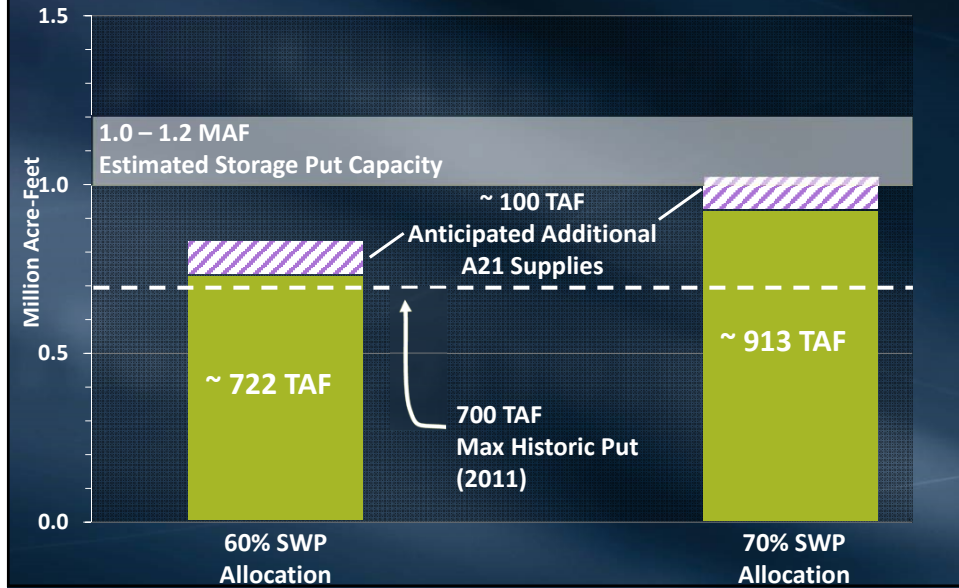
## Article 21 Supply Availability

	FEEDBACK
Fill San Luis Reservoir	✓
Meet Contractor Demands	✓
Excess Export Capacity	?

- Metropolitan has received ~43,000 AF of Article 21 supplies
- Limited during Clifton Court outage in April
- Anticipate ~100,000 AF of additional deliveries starting in May

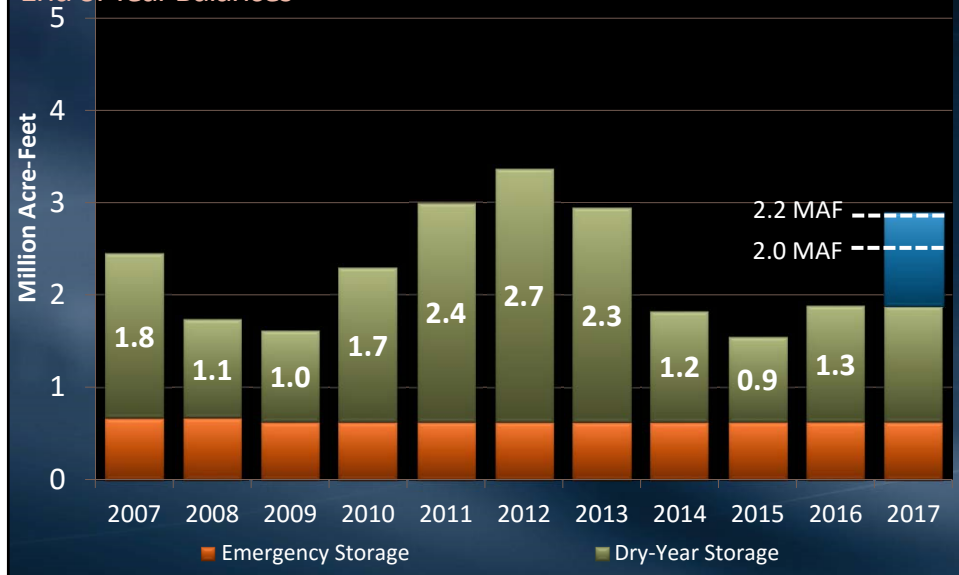


## 2017 Estimated Storage Puts



## Metropolitan is Forecasting an Increase in Storage Reserves this Year

End of Year Balances



## Summary

- SWP is not perfect, but it delivers
- Metropolitan stands ready to assist the Department of Water Resources
- Continue to look for opportunities to influence decision making and reduce costs
- Focus is on water supply reliability and smart water management

