

# Integrated Pest Management (Responsible Pest Control)

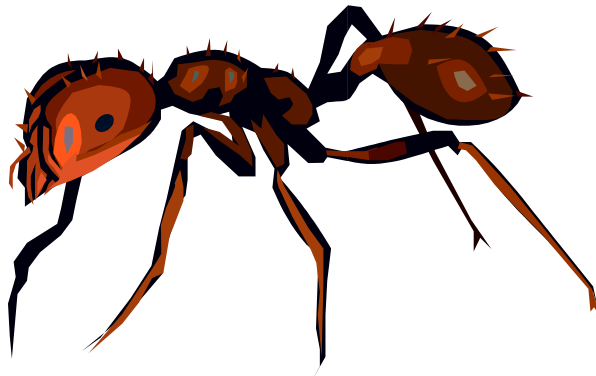
**Darren L. Haver**

University of California  
Cooperative Extension  
County of Orange

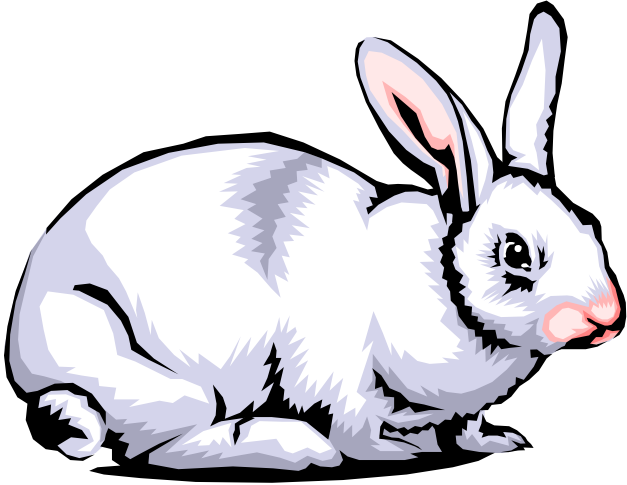


**University of California**

Agriculture and Natural Resources ■ *A Celebration of Science and Service*



# What is a Pest????



# How Do You Get Rid of a Pest in Your Landscape?

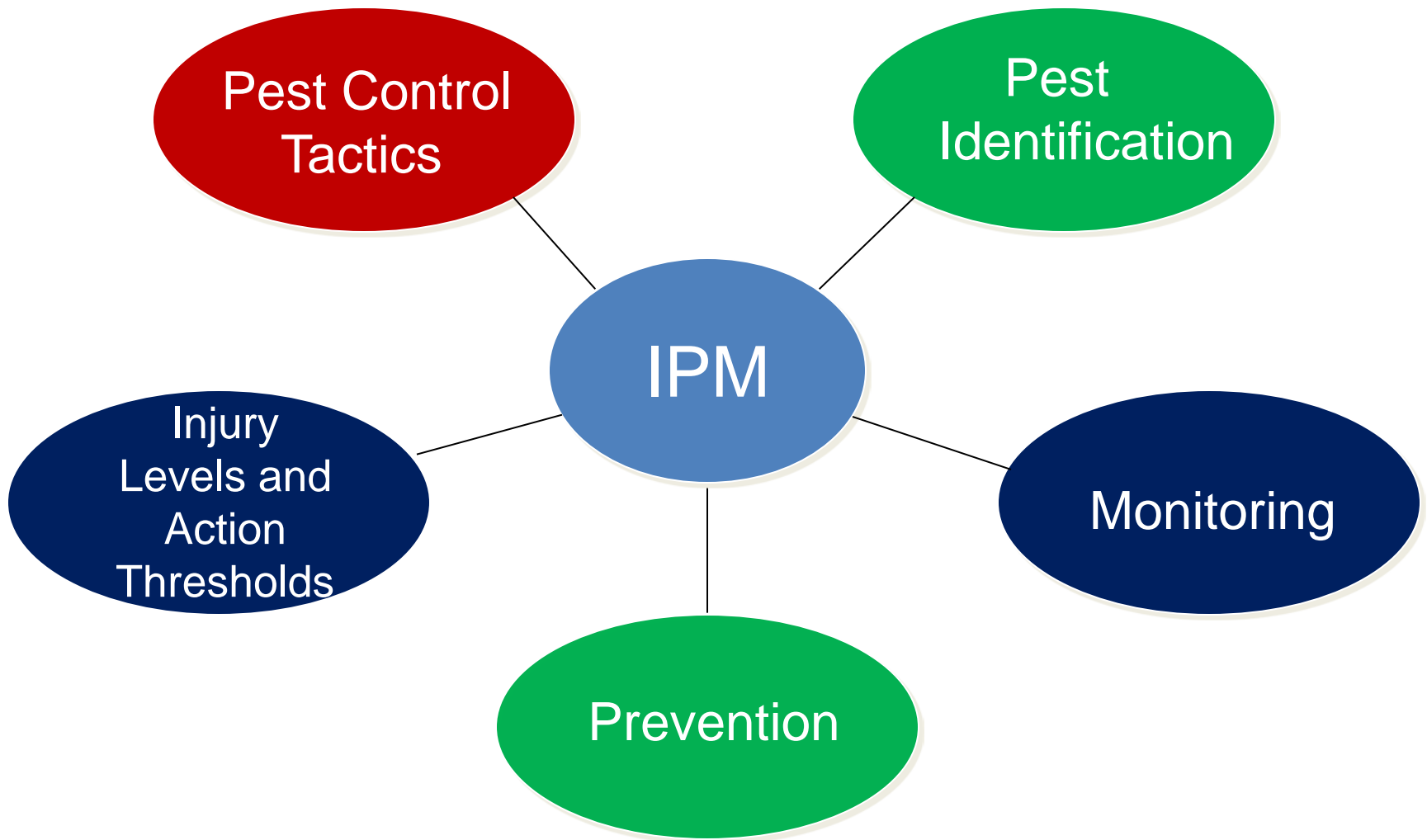


# What is Responsible Pest Control?

## Integrated Pest Management (IPM)

- Prevent and suppress pest problems with minimum adverse impacts on human health, the environment, and non-target organisms.

# Components of an IPM Program



# What is Responsible Pest Control?



# Why is it Important to Properly Identify a Pest? The Good and The Bad



**University of California**

Agriculture and Natural Resources ■ *A Celebration of Science and Service*



UC Statewide IPM Project  
© 2000 Regents, University of California





UC Statewide IPM Project  
© 2000 Regents, University of California





UC Statewide IPM Project  
© 2000 Regents, University of California



UC Statewide IPM Project  
© 2000 Regents, University of California





UC Statewide IPM Project  
© 2000 Regents, University of California



UC Statewide IPM Project  
© 2000 Regents, University of California



UC Statewide IPM Project  
© 2000 Regents, University of California

UC Statewide IPM Project  
© 2001 Regents, University of California







UC Statewide IPM Project  
© 2000 Regents, University of California



UC Statewide IPM Project  
© 2000 Regents, University of California



UC Statewide IPM Project  
© 2000 Regents, University of California

# Take Home Messages

- Is the pest really bothering you?
- Pesticides should be considered one of many methods to control pests.
- Remember pesticides kill both bad and good insects.
- Pesticides are carried away in runoff from irrigation and rain into streams, creeks, and the ocean.

# UC IPM WEB SITE

<http://www.ipm.ucanr.edu/>



**University of California**

**Agriculture and Natural Resources**

■ *A Celebration of Science and Service*