

WORKSHOP MEETING OF THE
BOARD OF DIRECTORS WITH MET DIRECTORS
MUNICIPAL WATER DISTRICT OF ORANGE COUNTY
18700 Ward Street, Board Room, Fountain Valley, California
November 4, 2015, 8:30 a.m.

AGENDA

PLEDGE OF ALLEGIANCE

ROLL CALL

PUBLIC PARTICIPATION/COMMENTS

At this time members of the public will be given an opportunity to address the Board concerning items within the subject matter jurisdiction of the Board. Members of the public may also address the Board about a particular Agenda item at the time it is considered by the Board and before action is taken.

The Board requests, but does not require, that members of the public who want to address the Board complete a voluntary "Request to be Heard" form available from the Board Secretary prior to the meeting.

ITEMS RECEIVED TOO LATE TO BE AGENDIZED

Determine need and take action to agendize item(s), which arose subsequent to the posting of the Agenda. (ROLL CALL VOTE: Adoption of this recommendation requires a two-thirds vote of the Board members present or, if less than two-thirds of the Board members are present, a unanimous vote.)

ITEMS DISTRIBUTED TO THE BOARD LESS THAN 72 HOURS PRIOR TO MEETING

Pursuant to Government Code Section 54957.5, non-exempt public records that relate to open session agenda items and are distributed to a majority of the Board less than seventy-two (72) hours prior to the meeting will be available for public inspection in the lobby of the District's business office located at 18700 Ward Street, Fountain Valley, California 92708, during regular business hours. When practical, these public records will also be made available on the District's Internet Web site, accessible at <http://www.mwdoc.com>.

(NEXT RESOLUTION NO. 2019)

PRESENTATION/DISCUSSION/INFORMATION ITEMS

1. ORANGE COUNTY'S DROUGHT PERFORMANCE – SEPTEMBER REPORT

Recommendation: Review and discuss the information presented.

**2. METROPOLITAN WATER DISTRICT'S POTENTIAL AGREEMENT WITH THE
SANITATION DISTRICTS OF LOS ANGELES COUNTY FOR DEVELOPMENT OF
A DEMONSTRATION-SCALE RECYCLED WATER TREATMENT PLANT -
PRESENTATION BY DEBRA MAN OF MET (Approximate Presentation Time:
35 minutes)**

Recommendation: Review and discuss the information presented.

3. STATUS ON METROPOLITAN'S 2015 INTEGRATED RESOURCES PLAN (IRP) – MET'S PUBLIC OUTREACH WORKSHOP HELD ON OCTOBER 22, 2015

Recommendation: Review and discuss the information presented.

4. MET ITEMS CRITICAL TO ORANGE COUNTY

- a. MET's Water Supply Conditions
- b. MET's Finance and Rate Issues
- c. Colorado River Issues
- d. Bay Delta/State Water Project Issues
- e. MET's Ocean Desalination Policy and Potential Participation by MET in the Doheny Desalination Project and in the Huntington Beach Ocean Desalination Project (Poseidon Desalination Project)
- f. Orange County Reliability Projects
- g. East Orange County Feeder No. 2

Recommendation: Discuss and provide input on information relative to the MET items of critical interest to Orange County.

5. OTHER INPUT OR QUESTIONS ON MET ISSUES FROM THE MEMBER AGENCIES

6. METROPOLITAN (MET) BOARD AND COMMITTEE AGENDA DISCUSSION ITEMS

- a. Summary regarding October MET Board Meeting
- b. Review items of significance for MET Board and Committee Agendas

Recommendation: Review and discuss the information presented.

ADJOURNMENT

Note: Accommodations for the Disabled. Any person may make a request for a disability-related modification or accommodation needed for that person to be able to participate in the public meeting by telephoning Maribeth Goldsby, District Secretary, at (714) 963-3058, or writing to Municipal Water District of Orange County at P.O. Box 20895, Fountain Valley, CA 92728. Requests must specify the nature of the disability and the type of accommodation requested. A telephone number or other contact information should be included so that District staff may discuss appropriate arrangements. Persons requesting a disability-related accommodation should make the request with adequate time before the meeting for the District to provide the requested accommodation.



DISCUSSION ITEM

November 4, 2015

TO: Board of Directors

FROM: Robert Hunter
General Manager

Staff Contact: Harvey De La Torre

**SUBJECT: ORANGE COUNTY'S DROUGHT PERFORMANCE – SEPTEMBER 2015
REPORT**

STAFF RECOMMENDATION

Staff recommends the Board of Directors review and discuss this information

BACKGROUND

Earlier this year Governor Brown issued an Executive Order calling for statewide mandatory water reductions for all urban water retail agencies. The purpose was to reduce water consumption in response to the record-breaking drought throughout the state of California. Although each Orange County retail agency was assigned a conservation target by the State Water Resource Control Board (State Board) that ranges between 8% and 36%, the aggregated water savings target among all of the retail agencies in Orange County is approximately 21.73%.

At the same time, the Metropolitan Board implemented its water supply allocation plan at a level 3 to all of its member agencies, effective July 1, 2015. This called for a reduction, no greater than 15%, in imported water usage for a twelve month period; ending June 30, 2016.

The reports below demonstrates how Orange County, as a whole, has been performing to the State Board's water saving targets and how MWDOC has been tracking to MET imported water supply allocation targets. Please note, these targets are calculated differently and are based on different factors.

Report

Orange County's Performance under the SWRCB Mandatory Reduction Targets

Budgeted (Y/N): n/a	Budgeted amount: n/a	Core <u>X</u>	Choice <u> </u>
Action item amount: n/a	Line item:		
Fiscal Impact (explain if unbudgeted):			

Orange County monthly % Savings vs. SWRCB Target
(As of October 29, 2015)

	June	July	August	Sept.
Orange County SWRCB Savings Target*	21.73%			
Orange County Actual Savings	23.86%	29.16%	25.12%	Pending
Savings beyond the Target	2.13%	7.43%	3.39%	N/A

For the month of the August Orange County retail water agencies reported a total water saving of 25.12% (note this is compared to August 2013 water usage). This exceed our Orange County month conservation target of 21.73% by 3.39%. The Cumulative Savings for three months into the State Board Regulations total 26.57% for Orange County.

At the time of preparing this report, the State Board had not released its numbers for the month of September. Therefore, staff will likely present the new savings amount at the Board workshop on November 4.

MWDOC's performance under the MET's Water Supply Allocation Plan

MWDOC Actual Imported Water Usage vs. Imported Allocation Target
(As of October 29, 2015)

	July	August	Sept.	Oct. (Est.)	Total
Allocation Monthly Target*	21,790	22,082	19,940	16,055	79,867 AF
Actual Imported Usage**	15,951	15,791	11,851	13,197	56,789 AF

[*] Estimated monthly imported water allocation targets per the MWDOC's WSAP model.

[**] This includes all MWDOC imported water purchases – Full Service Treated and Full Service untreated (Replenishment purchases are included)

Note: These targets are subject to change based on actual local supply production and WSAP calculations.

As of October 29, the total actual imported water usage for July through October (Estimates) totals 56,798 AF, this is 23,078 AF below our estimated allocation target (this includes OCWD purchases).

Based on our actual imported water usage tracking well-below our allocation targets these past months, mainly due to retail agencies responding to the State Board's mandatory reduction targets, the MWDOC Board last month authorized the General Manager to offer our member agencies up to 16,000 AF of a secondary assignment of currently unused imported water from MET's Allocation to MWDOC with appropriate conditions. OCWD responded to this offer and requested 10,500 AF of untreated water to their spreading basins (this request plus 6,500 AF that was already delivered earlier in the fiscal year totals 17,000 AF).



Orange County's Drought Performance Report

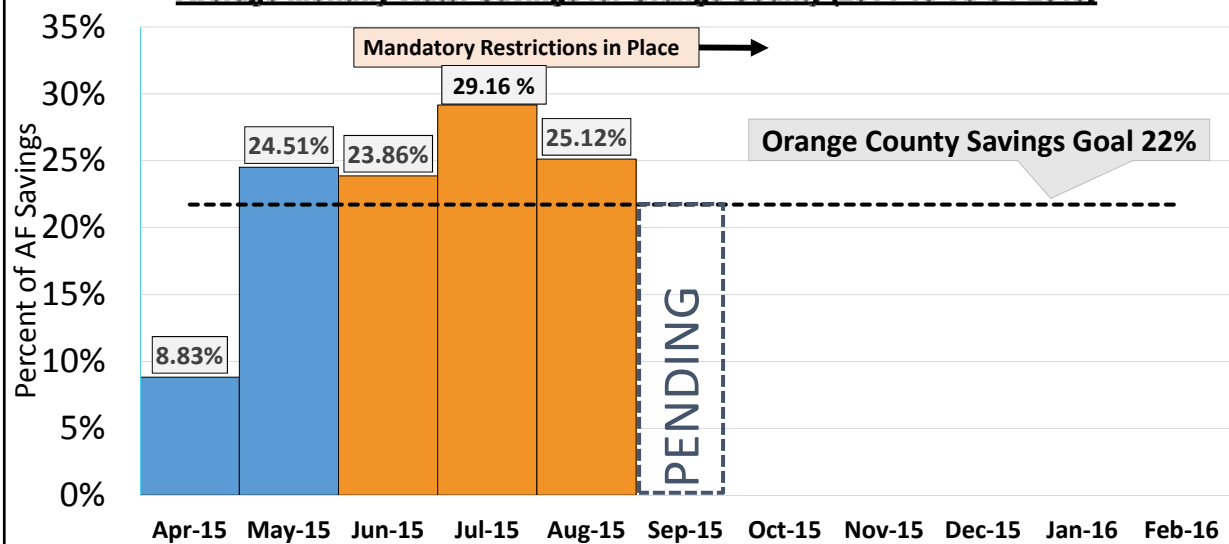
November 4, 2015

Municipal Water District of Orange County

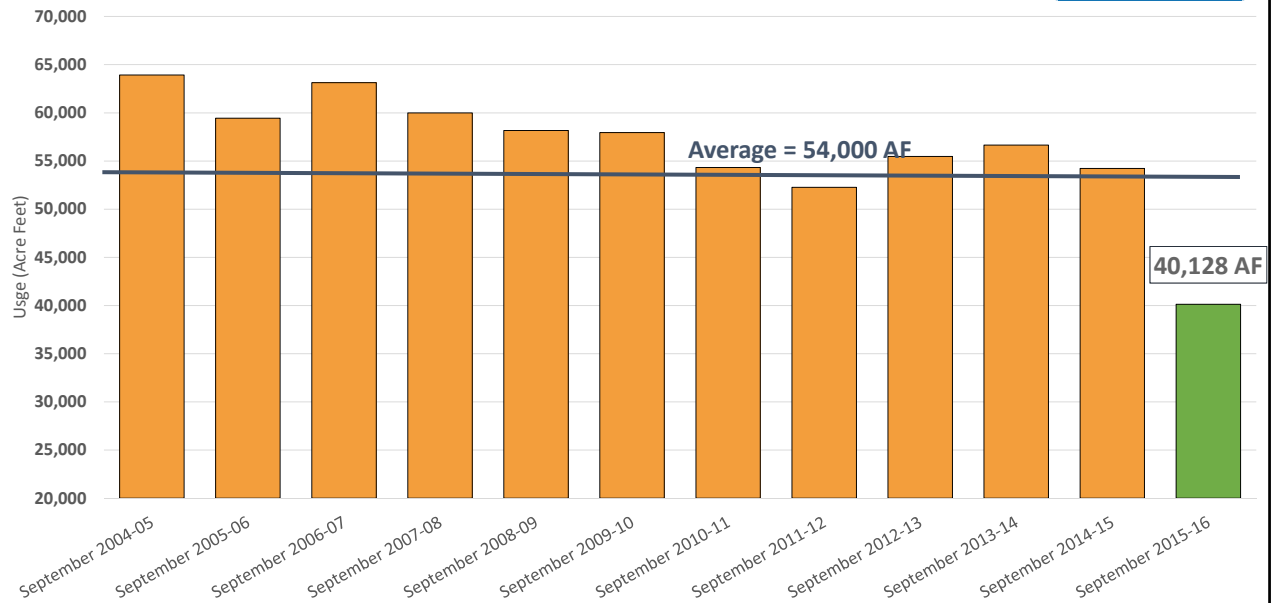
O.C. Water Savings Reported to SWRCB



Average Monthly Water Savings for Orange County (2014-15 Vs CY 2013)

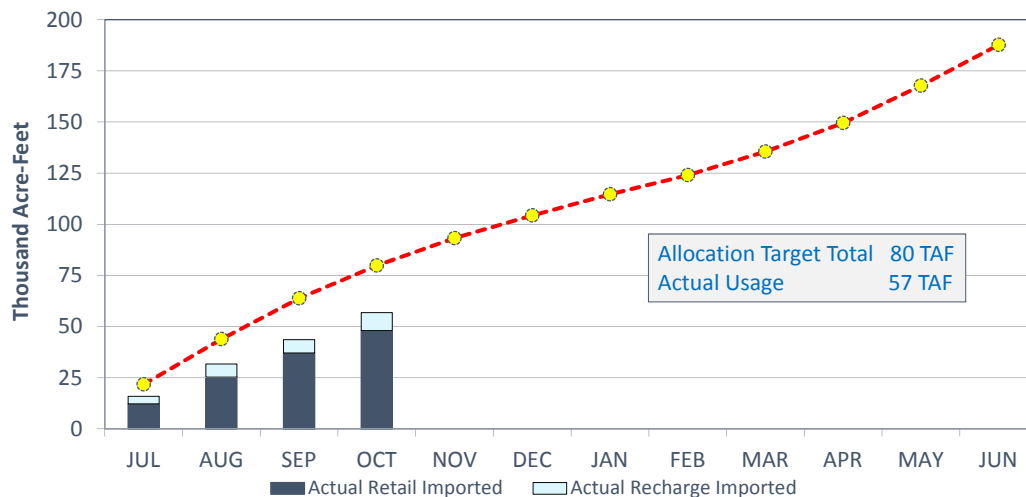


OC Historical September Water Usage

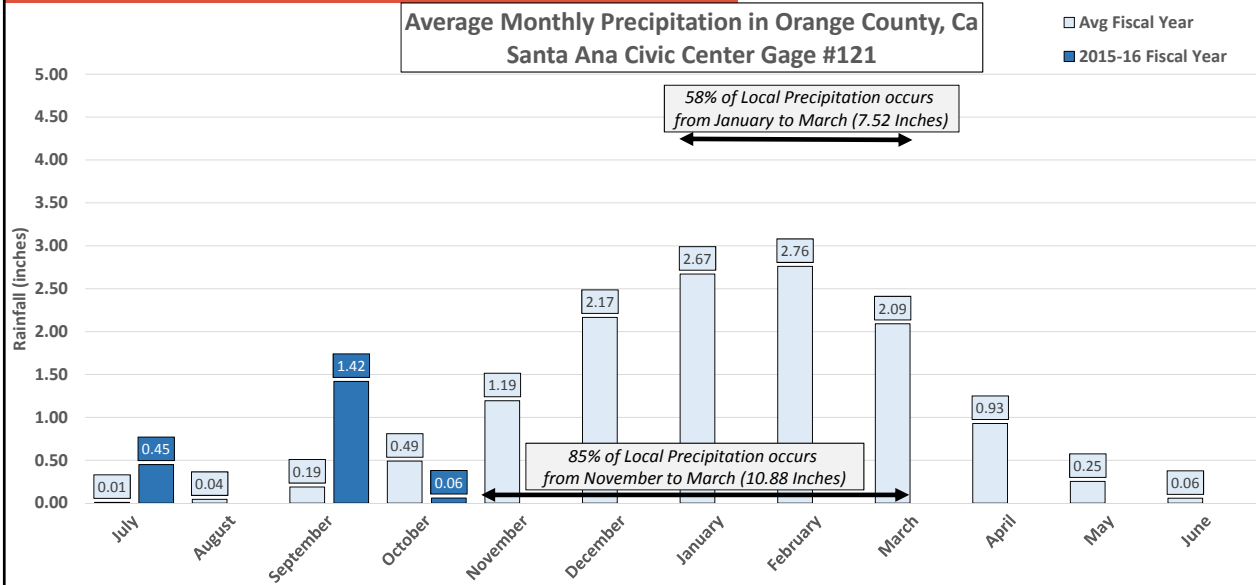


MWDOC performance under MET Allocations

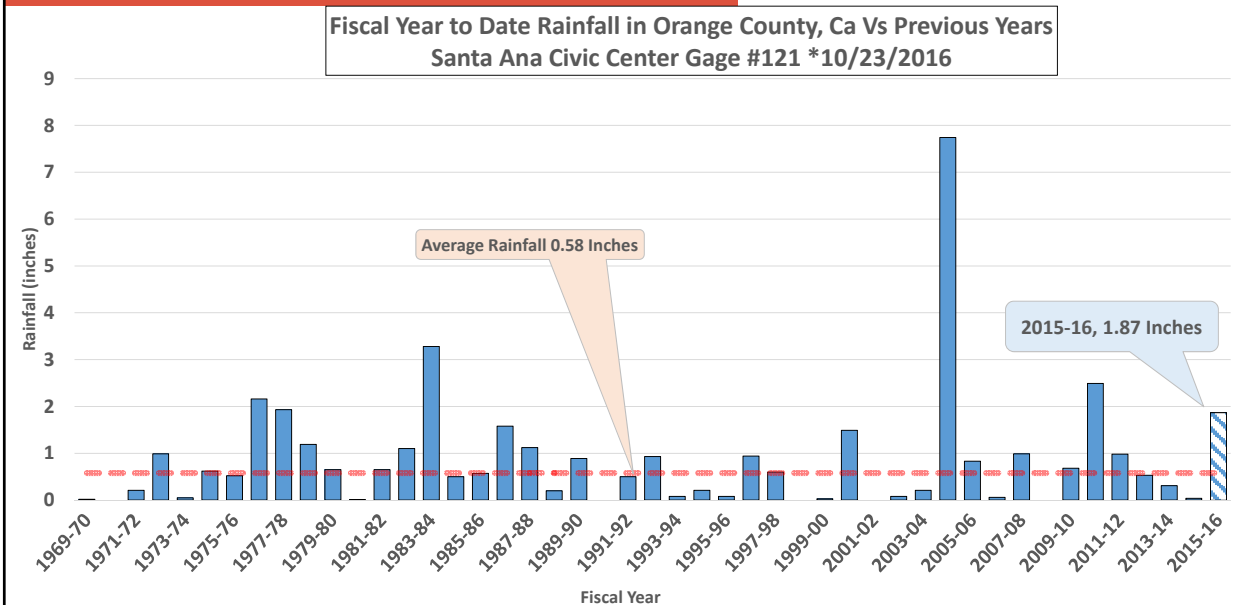
Cumulative Imported Water Usage vs. Allocation Target



2015-16 FY Rainfall



FYD Rainfall Compared to Past



FY Annual Precipitation (Santa Ana)



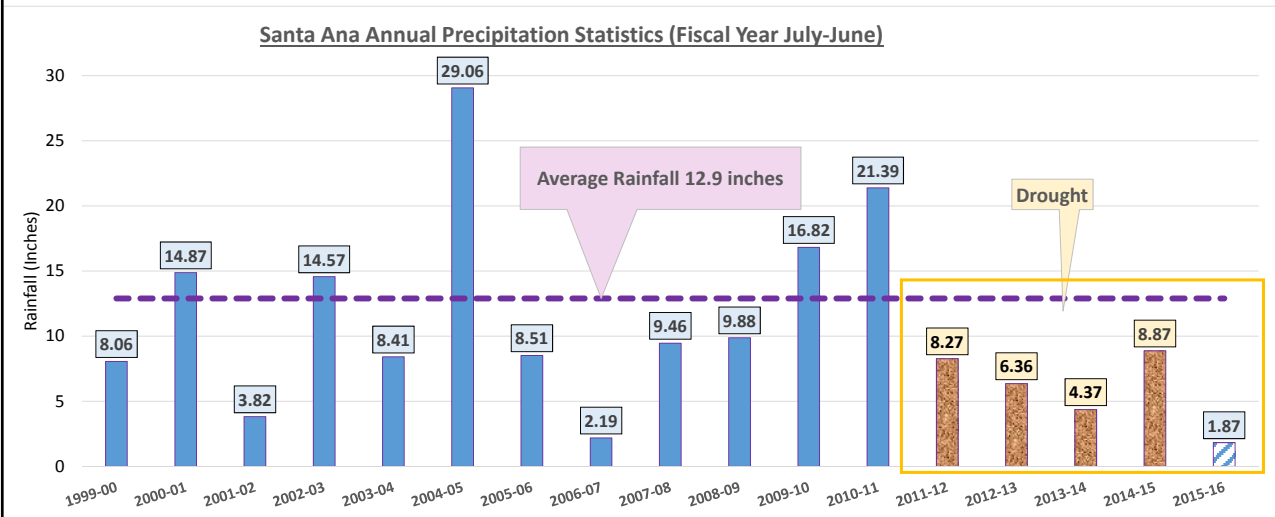
Cumulative Year-to-Date

Average: 0.58"

2015-16: 1.87"

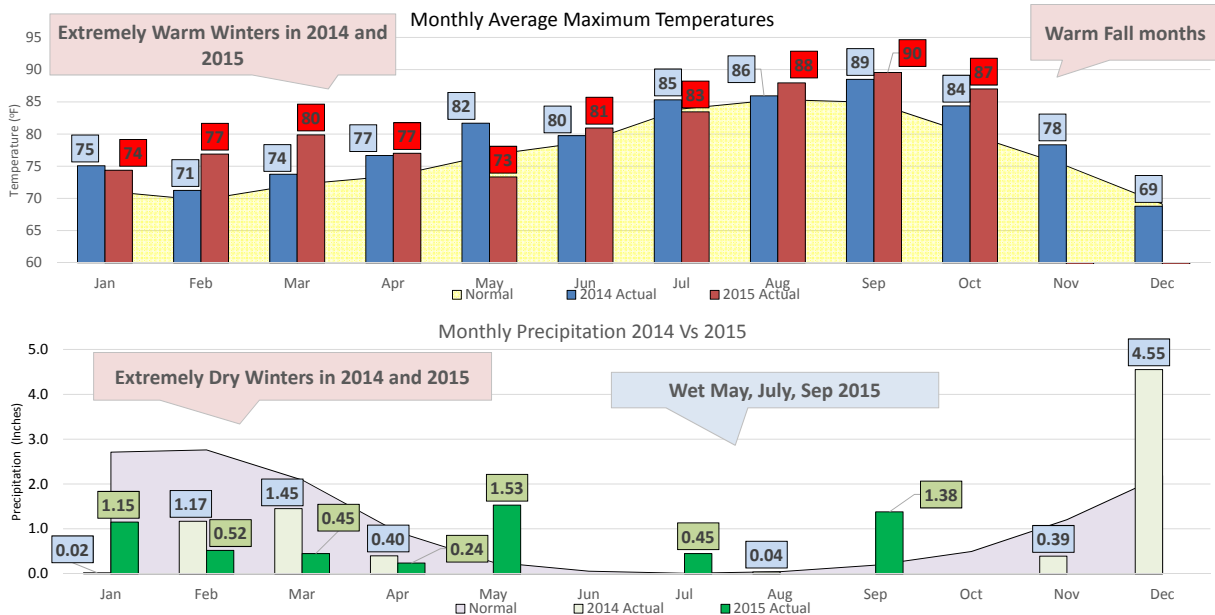
Average Annual Rainfall: 12.9"

4-Year Deficit: 23.3" (2011-12 to Present)

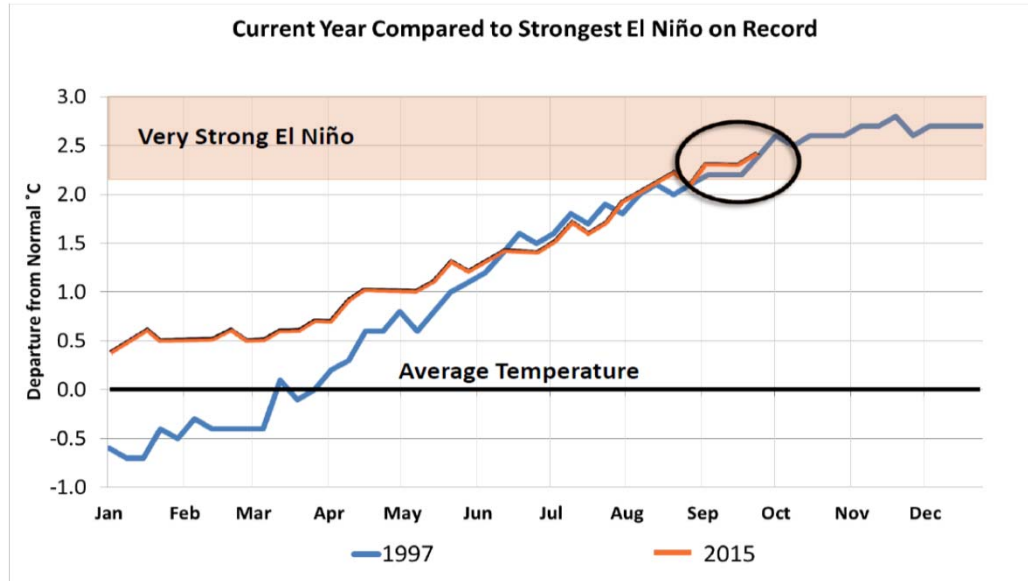


2015 vs. 2014 Weather

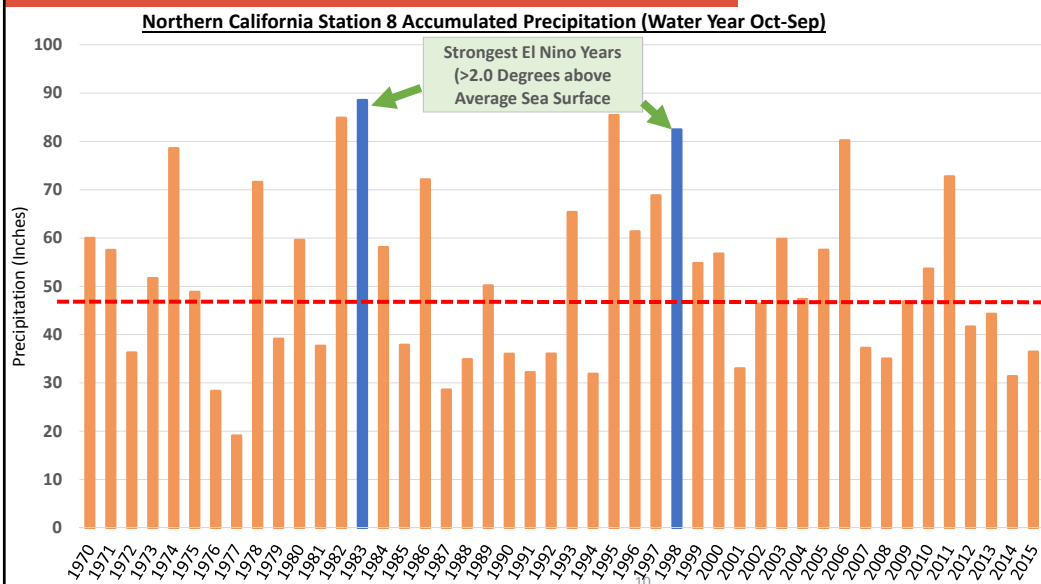
- January-April 2015 were very warm and dry.
- May-July 2015 have been wet and slightly cooler than normal.
- ~**May 2015 has so far been the coolest month.**



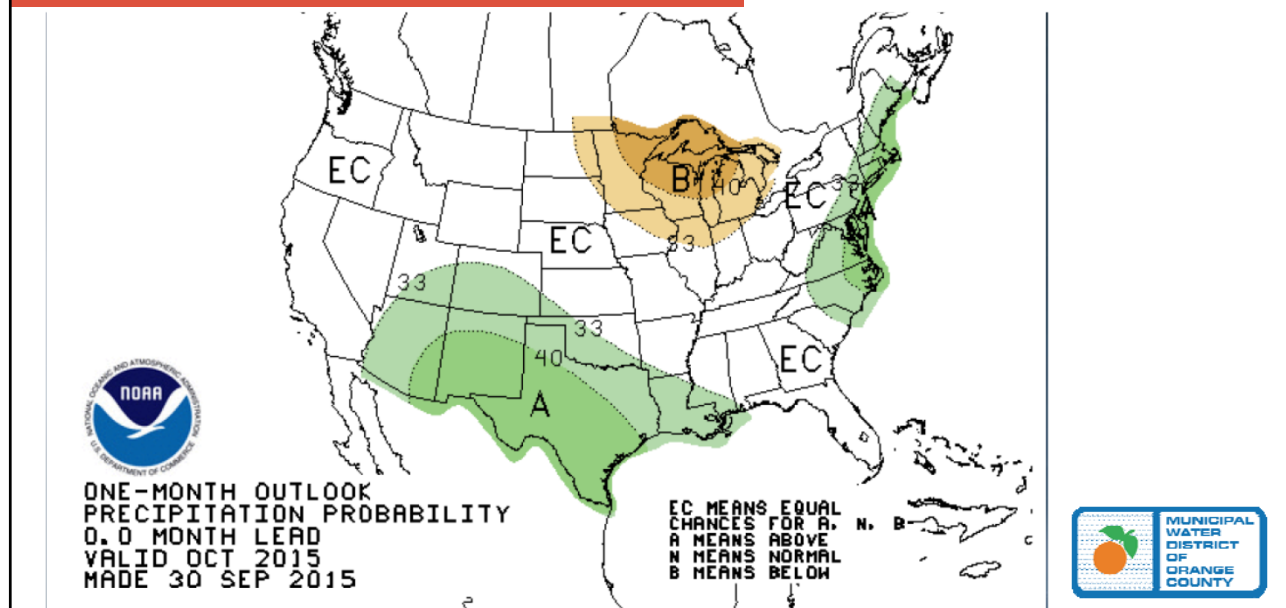
Strong El Niño this year?



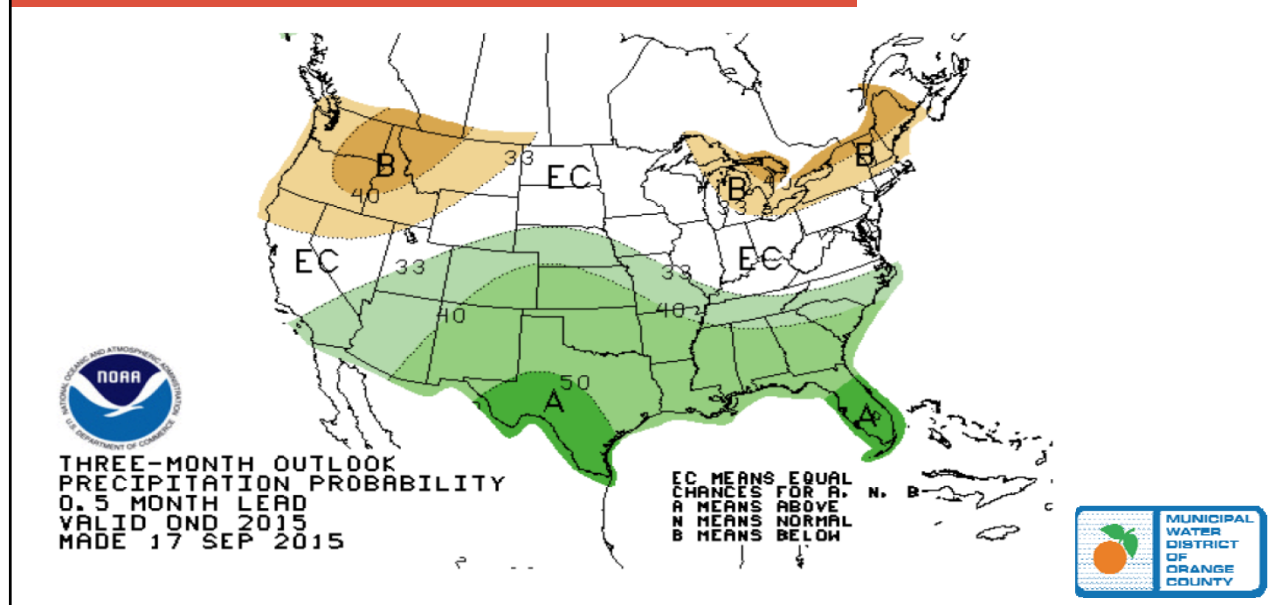
El Niño impact Northern CA?



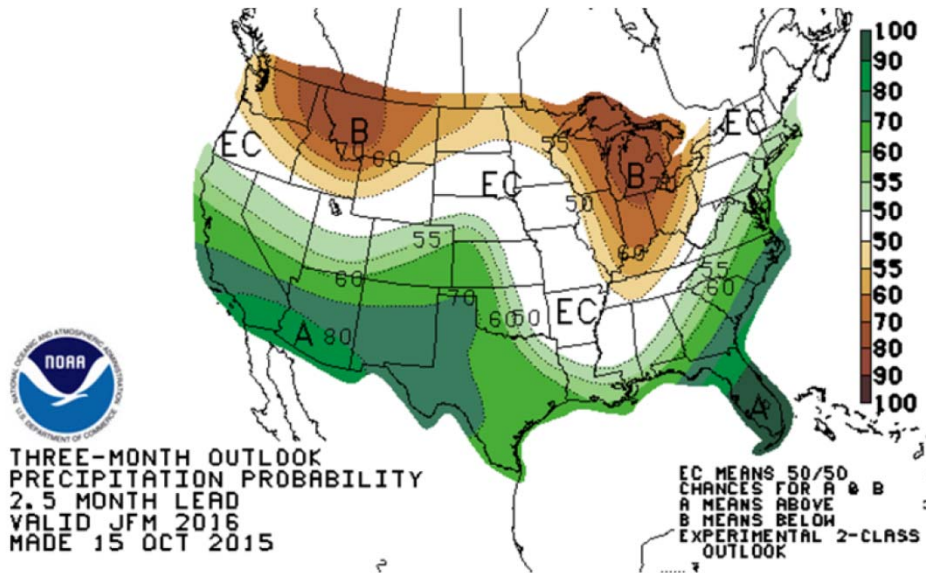
Official October Forecast



Three Month Forecast (Oct.-Nov.-Dec.)



Long Term Forecast (Jan.-Feb.-Mar.)





DISCUSSION ITEM

November 4, 2015

TO: Board of Directors

FROM: Robert Hunter
General Manager

Staff Contact: Harvey De La Torre

SUBJECT: Metropolitan Water District's potential agreement with the Sanitation Districts of Los Angeles County for development of a demonstration-scale recycled water treatment plant - Presentation by Debra Man of MET

STAFF RECOMMENDATION

Staff recommends the Board of Directors review and discuss this information

REPORT

In September, Metropolitan staff discussed with its Board of Directors an opportunity with the Sanitation Districts of Los Angeles County to develop a potential regional recycling water project for the recharge of groundwater basins and augmentation of water supplies within the Southern California region, in particular delivering such recycled water to the Orange County Basin. MWDOC staff has invited Debra Man to provide detail on this new potential project, MET's approach, and the initial terms MET has negotiated with LA Sanitation District.

This month, the MET Board will consider appropriating \$15 million funds and authorizing an agreement with the LA Sanitation District for the development of a 1 MGD demonstration project; including the initial planning for a potential regional recycled water supply program that could delivery up to 160 MGD. See the attached MET Board Item 8-3.

Budgeted (Y/N): n/a	Budgeted amount: n/a	Core _X_	Choice ____
Action item amount: n/a	Line item:		
Fiscal Impact (explain if unbudgeted):			



● **Board of Directors**
Water Planning and Stewardship Committee

11/10/2015 Board Meeting

8-3

Subject

Appropriate \$15 million; and authorize: (1) agreement with County Sanitation District No. 2 of Los Angeles County for development of a potential regional recycled water supply program; and (2) design of a demonstration-scale recycled water treatment plant (Approp. 15493)

Executive Summary

This action authorizes Metropolitan to enter into an agreement with the Sanitation Districts of Los Angeles County, specifically County Sanitation District No. 2 of Los Angeles County (Sanitation District), to implement a demonstration project and to establish the framework of terms and conditions for development of a regional recycled water supply program. As reported to the Water Planning and Stewardship Committee on September 22, 2015 and October 12, 2015, Metropolitan has the opportunity to work collaboratively with the Sanitation District to develop a potential regional recycled water supply program that would purify and reuse water for the recharge of groundwater basins. Under the proposed agreement, Metropolitan and the Sanitation District would jointly develop this program to purify secondary effluent from the Sanitation District's Joint Water Pollution Control Plant (JWPCP) using advanced treatment technologies to produce water that is near-distilled in quality and that would be equal or better than the quality of water currently used to replenish groundwater basins in the Southern California region. The secondary effluent from the JWPCP is currently discharged to the Pacific Ocean. The purified water would be delivered to Metropolitan's member agencies to meet their groundwater recharge and storage requirements. A collaboration between the two districts could advance the reuse of water at a scale, timing, and strategic location to serve the direct needs of multiple member agencies for recharge of groundwater basins in Southern California, and to augment regional supplies for Metropolitan's service area.

The demonstration project would serve as a proof of concept and would provide critical information needed for implementation of the potential regional recycled water supply program. The demonstration project would consist of three components: (1) a one million gallon per day (1mgd) demonstration-scale treatment plant, which would verify source water quality criteria and confirm the advanced treatment process needed to purify water for groundwater recharge; (2) feasibility studies of the delivery system to determine the distribution facilities, routing, capacity, phasing, and timing needed to recharge various groundwater basins within Metropolitan's service area, and (3) a financing plan to assess the economic viability of a full-scale regional program. Staff anticipates returning to the Board within one year with its preliminary recommendations concerning the full-scale program.

The proposed agreement also establishes the framework of terms and conditions for development of the full-scale regional recycled water supply program, if recommended to both districts' respective boards for future consideration. The objectives of this framework are to enable the potential reuse of up to 150 mgd of treated effluent from the Sanitation District's JWPCP; fairly divide potential costs and investments, and establish responsibilities between Metropolitan and the Sanitation District; reserve the use of a Sanitation District site for the advanced water treatment facility; and ensure that this program would avoid conflicts and duplication with other recycled water plans.

Timing and Urgency

Development of a regional recycled water supply program would present a significant opportunity to provide a new resource that would help maintain groundwater recharge and storage for the service area. The unprecedented drought conditions of the past eight years have resulted in significant reductions in local surface supplies and groundwater production, and have increased the need for recharge supplies to groundwater and surface reservoirs to improve their sustainable yields and operating integrity. The challenges of continued droughts, climate change uncertainties, and the hydrologic variability of imported water supplies, demonstrate the value in accelerating development of water resources, including conservation, water recycling, groundwater recovery and storage, and ocean desalination.

The demonstration-scale treatment plant will be a capital project under Metropolitan's Capital Investment Plan (CIP). Funds for this project are available within Metropolitan's capital expenditure plan for fiscal year 2015/16.

Details

Advancing Recycled Water Resources Development

The current statewide drought emergency has underscored the importance of advancing the development of recycled water, in conjunction with conservation and maintaining core imported supplies – all as outlined in Metropolitan's Integrated Resources Plan (IRP). The 2014/15 water year brought the lowest snowpack and runoff in recorded history, and resulted in significant loss of surface water supplies and groundwater production within Metropolitan's service area. Reservoirs and groundwater basins are now at their lowest storage levels in the last two decades, highlighting an increasing need for groundwater and surface reservoir recharge supplies to improve their sustainable yields and operating integrity. The projected groundwater production within Metropolitan's service area is estimated to have fallen by approximately 250,000 acre-feet per year due to these unprecedented drought conditions. In addition, there remains 150,000 acre-feet per year of new conservation and local resources that have yet to be developed in order to meet the 2010 IRP resource targets for maintaining water supply reliability over the next 20 years.

These events and potential challenges have led Metropolitan and its member agencies to pursue resource strategies that accelerate the development of significant local resources to deal with droughts, climate change, and seismic risks. The development of a regional recycled water supply program would be consistent with these strategies and would provide a significant water supply. Further, the potential program would offer an opportunity to add value to Metropolitan's core supplies, by recapturing for reuse a significant amount of imported State Water Project (SWP) and Colorado River Aqueduct (CRA) supplies that have already been delivered to the Sanitation District's service area by Metropolitan.

Regional Collaboration

A regional collaboration between Metropolitan and the Sanitation District to jointly develop recycled water supplies has been under discussion for over five years, with careful consideration of the technical feasibility and institutional coordination required. In March 2010, Metropolitan's Board authorized staff to collaborate with the Sanitation District to study the feasibility of a regional indirect potable reuse program and to perform pilot-scale studies. Between June 2010 and July 2012, these pilot studies were conducted jointly by the two districts at the JWPCP in order to evaluate the feasibility of advanced treatment of the JWPCP's secondary effluent. The pilot-scale studies also evaluated how Metropolitan could meet then-draft Title 22 Groundwater Replenishment Regulations administered by the California Department of Public Health, now the Division of Drinking Water. The results of the pilot-scale studies indicated that advanced treatment for indirect potable reuse through groundwater replenishment is technically feasible. Since the pilot study, additional requirements were incorporated into the final Title 22 Groundwater Replenishment Regulations, which became effective June 2014.

On this basis, Metropolitan and the Sanitation District have jointly prepared a proposed agreement to implement a demonstration project and to establish the framework of terms and conditions for development of a regional recycled water supply program. The term sheet for the agreement is included in [Attachment 1](#). The proposed agreement provides the draft terms and conditions for regional collaboration between the two districts to advance

the reuse of water at a scale, timing, and strategic location to serve the direct needs of multiple member agencies for the recharge of groundwater basins in Southern California, and to augment regional supplies for Metropolitan's service area.

Under this regional program, Metropolitan would purify the secondary effluent from the Sanitation District's JWPCP using advanced treatment technologies to produce water that is near-distilled in quality and that would be equal or better than the quality of water currently used to replenish groundwater basins in the Southern California region. Up to 150 mgd of secondary effluent from the JWPCP, which is currently discharged to the Pacific Ocean, would be available for purification and reuse. Metropolitan would deliver the purified water annually to member agencies to meet their groundwater recharge and storage requirements.

The Sanitation District is a member of a partnership of 24 independent and special districts that provide wastewater and solid waste management for approximately 5.3 million people in Los Angeles County. These agencies currently treat an average of 440 mgd of wastewater at ten water reclamation plants and at the JWPCP located in Carson, California ([Attachment 2](#)). The JWPCP is the Sanitation District's largest wastewater treatment plant, with a capacity of 400 mgd. It currently provides primary and secondary treatment to an average daily flow of approximately 270 mgd of wastewater before it is discharged through outfall tunnels to the Pacific Ocean. In consideration of recent wastewater flow reductions due to conservation, and regulatory compliance issues associated with brine discharge from the potential advanced water treatment facility, the Sanitation District estimates that there is sufficient secondary effluent available to produce approximately 150 mgd of purified water for reuse.

Proposed Demonstration Project

As an initial step, the demonstration project would serve as a proof of concept and would provide critical information needed for implementation of the potential regional recycled water supply program. The demonstration project would consist of three components:

- 1. Demonstration Plant** – Under the proposed agreement, a 1-mgd demonstration-scale recycled water treatment plant would be planned and designed to verify criteria for the source quality of water from the JWPCP for the advanced water treatment facility; to confirm the treatment processes required for regulatory acceptance of the purified product water for groundwater recharge; and to characterize the brine and waste for disposal. Critical information will be developed for these parameters in conjunction with design of the 1-mgd demonstration plant, and will be provided by December 2016. Award of a construction contract for the demonstration plant is also planned for that date. The plant would then be constructed and operated to optimize design and operational strategies for the above parameters to assist in scale-up to a full-scale advanced water treatment facility. The demonstration plant would also confirm capital and operating costs for the full-scale facility, provide water quality data for regulatory acceptance, and create a visitor center for public outreach and education. The demonstration plant would be located within the operational boundary of the JWPCP.
- 2. Feasibility Studies of the Delivery System** – Metropolitan would conduct feasibility studies of the delivery system that would distribute the purified water to member agencies for the recharge of groundwater basins within the service area. The anticipated activities of the feasibility studies include the development of program capacity, phasing, and timing; coordination with member agencies and stakeholders on groundwater recharge requirements; investigation of delivery system facilities, alignments, rights-of-way, and substructures; development of initial costs, and identification of regulatory and environmental requirements.
- 3. Financing Plan** – Metropolitan would also prepare a financing plan to assess the economic viability of a regional program. The financing plan would establish water sale arrangements with member agencies for the delivery of reuse water for recharge of groundwater basins; evaluate the potential for state and federal grants and loans; determine cost-sharing opportunities; and assess funding and rate impacts.

Development of a Potential Full-Scale Program

The determination to proceed with a full-scale regional recycled water supply program would be made based on information developed and confirmed through the demonstration project. The proposed agreement between Metropolitan and the Sanitation District addresses implementation of the demonstration project and also establishes the framework of terms and conditions for development of a full-scale program, if recommended to both districts' respective boards for future consideration. Under the proposed agreement, the respective responsibilities of the two districts and key terms for both the demonstration project and the full-scale program are outlined. The key terms for the full-scale program are tentative and not binding until that full-scale program is authorized by the boards of Metropolitan and the Sanitation District. The term sheet appears in [Attachment 1](#).

The responsibilities and key terms for the demonstration project are as follows:

- Subject to each board's approval
- If authorized to proceed, the Sanitation District would:
 1. Deliver 1 mgd of secondary-treated effluent as source water to the demonstration plant.
 2. Provide land and utilities for the demonstration plant.
 3. Dispose of brine and waste streams.
 4. Perform influent laboratory analyses.
- If authorized to proceed, Metropolitan would:
 1. Fund, design, construct, operate, and maintain the 1mgd demonstration plant.
 2. Conduct feasibility studies for a potential full-scale program in conjunction with the demonstration project.
 3. Determine water quality-related, regulatory, and flow parameters for a potential full-scale program.

The tentative responsibilities and key terms for a full-scale regional recycled water supply program are as follows:

- Subject to each board's approval
- If authorized to proceed, the Sanitation District would:
 1. Deliver secondary-treated effluent as source water to Metropolitan's advanced water treatment facility sufficient to produce up to 150 mgd of product water.
 2. Lease land for the advanced water treatment facility.
 3. Maintain the quantity and quality of the source water made available to the advanced water treatment facility for each phase of the full-scale program as agreed to by the parties, subject to certain conditions.
 4. Dispose of brine and waste streams.
 5. Agree not to collect from Metropolitan a fee, service charge, or connection fee for the above.
- If authorized to proceed, Metropolitan would:
 1. Fund, design, construct, operate, and maintain the advanced water treatment facility and delivery system. The program may be developed in phases, up to a capacity of 150 mgd, while funding would be less any state or other participating funds.
 2. Distribute and sell the product water.
 3. Provide exchange water, in a quantity of approximately one percent of the product water, to the Sanitation District.
 4. Pay \$5,000 per acre/year to the Sanitation District, escalated by the CPI annually, for the land leased for the advanced water treatment facility.

Demonstration-Scale Recycled Water Treatment Plant – Planning and Design Phase (\$15,000,000)

The planning effort will include conceptual layout of the plant, coordination of connections to the Sanitation District facility, identification of permitting requirements, and preparation of a conceptual design report.

Planned design phase activities include field surveys, detailed geotechnical investigations, preparation of environmental documentation, value engineering, local agency permitting, preparation of final construction plans and specifications, receipt of competitive bids, and development of construction cost estimates.

The design approach for the 1 mgd plant will utilize MWD staff, consultants, and in-kind services from the Sanitation District. Staff will initiate a selection process for design consultants with specialized expertise in the design and operation of these types of recycled water facilities. In addition to designing the plant, it is envisioned that the consultant will provide engineering support during construction of the plant, and will provide staff to operate the plant for the initial 12 months of operation and testing. Staff will return to the Board to authorize the consulting agreement for the design phase of the project in February 2016. At the time the construction contract for the plant is awarded, staff may return to the Board to amend the professional services agreement for the construction oversight and operational activities. Metropolitan staff will provide technical oversight of the design effort and will perform design in appropriate areas of the project. The Sanitation District staff will perform design activities within the JWPCP at locations where the demonstration plant will tie into its existing facilities.

This action appropriates \$15 million for design, construction, and one year of operation of the demonstration plant, and authorizes planning and design-phase activities for the plant ([Attachment 3](#)). The requested funds for the planning and design phase includes \$770,000 for planning and conceptual design, \$1.2 million for design, and \$510,000 for permitting, preparation of environmental documentation, value engineering, and project management. The requested funds for the construction, start-up, operation, and testing are \$11.62 million. The remaining budget is \$900,000. Staff will return to the board in the future for authorization of construction, start-up, operation and testing, and to award the construction contract of the plant.

The total estimated cost for design, construction and one year of operation of the demonstration plant is \$15 million. The demonstration-scale treatment plant will be a capital project under Metropolitan's Capital Investment Plan (CIP). Funds for this project are available within Metropolitan's capital expenditure plan for fiscal year 2015/16.

Project Milestones

February 2016 – Board authorization of agreements for design of the demonstration plant and for feasibility studies

October/November 2016 – Board review of the Financing Plan, the results of the feasibility studies of the delivery system, and the critical process-related information developed during design of the demonstration plant

December 2016 – Board award of construction contract for the demonstration plant; and potential certification of environmental documentation for the full-scale regional recycled water supply program

Policy

Metropolitan Water District Administrative Code Section 8121: General Authority of the General Manager to Enter Contracts

By Minute Item 42287, dated February 11, 1997, the Board adopted a set of policy principles on water recycling
Metropolitan Board Report No. 1373, "2010 Update of Integrated Water Resources Plan", dated October 2010

California Environmental Quality Act (CEQA)

CEQA determination for Option #1:

The proposed action is categorically exempt under the provisions of CEQA and the State CEQA Guidelines. The proposed action involves the funding and minor alterations of existing private or public facilities, along with the construction of minor appurtenant structures, with minor modifications in the condition of land, water, and/or vegetation which do not involve removal of healthy, mature, scenic trees. The proposed action also consists of basic data collection and resource evaluation activities, which do not result in a serious or major disturbance to an environmental resource. This may be strictly for information gathering purposes, or as part of a study leading to an action which a public agency has not yet approved, adopted, or funded. These activities would result in negligible expansion of use and no possibility of significantly impacting the physical environment. Accordingly, the proposed action qualifies under Class 1, Class 3, Class 4, and Class 6 Categorical Exemptions (Sections 15301, 15303, 15304, and 15306 of the State CEQA Guidelines).

The CEQA determination is: Determine that pursuant to CEQA, the proposed action qualifies under four Categorical Exemptions (Class 1, Section 15301; Class 3, Section 15303; Class 4, Section 15304; and Class 6, Section 15306 of the State CEQA Guidelines).

CEQA determination for Option #2:

None required

Board Options

Option #1

Adopt the CEQA determination that the proposed action is categorically exempt, and

- a. Appropriate \$15 million;
- b. Authorize agreement with County Sanitation District No. 2 of Los Angeles County, substantially in conformance with the terms included in [Attachment 1](#), and in a form approved by the General Counsel, for implementation of a demonstration project and development of a potential regional recycled water supply program; and
- c. Authorize design of a demonstration-scale recycled water treatment plant.

Fiscal Impact: \$15 million in capital funds under Approp. No. 15493

Business Analysis: This option would advance the development of significant water reuse for the recharge of groundwater basins in Southern California, and would augment regional supplies for Metropolitan's entire service area to deal with droughts, climate change, and seismic risks, and to meet IRP resource targets.

Option #2

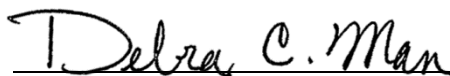
Do not proceed with the demonstration project or development of a regional recycled water supply program.

Fiscal Impact: None

Business Analysis: This option would forgo an opportunity to develop a significant recycled water resource to meet the increasing need for groundwater and surface reservoir recharge supplies for the improvement of sustainable yields, and to increase the region's water supply to deal with droughts, climate change, and emergencies.

Staff Recommendation

Option #1



10/28/2015

Debra Man

Date

Chief Operating Officer



10/28/2015

Jeffrey Kightlinger

Date

General Manager

**Attachment 1 – Term Sheet for Potential Regional Recycled Water Program Agreement with
Sanitation District No. 2 of Los Angeles County**

Attachment 2 – Location Map

Attachment 3 – Financial Statement

Ref# es12639798

**TERM SHEET FOR POTENTIAL REGIONAL RECYCLED WATER PROGRAM
AGREEMENT WITH SANITATION DISTRICT NO. 2 OF LOS ANGELES COUNTY**

GENERAL TERMS

AGREEMENTS	Program Agreement (“Agreement”) Ground Lease Source Water Agreement
PARTIES	Metropolitan Water District of Southern California (“Metropolitan”) County Sanitation District No. 2 of Los Angeles County (“Sanitation District”)
EFFECTIVE DATE	Agreement becomes effective on last date of execution of Agreement, Ground Lease and Source Water Agreement (“Effective Date”).
TERM	Twenty years from Effective Date
PROGRAM INTENT	To produce 150 million gallons per day (“MGD”) of purified water from Sanitation District’s Joint Water Pollution Control Plant (“Joint Plant”) in Carson for groundwater recharge and similar uses
PROJECT PHASING	<u>Demonstration Project</u> : approx. 1 MGD capacity, single phase <u>Full-Scale Project</u> : up to 150 MGD capacity, multiple phases
SCOPE OF COMMITMENT	<u>Demonstration Project</u> : Binding terms and conditions <u>Full-Scale Project</u> : Proposed terms and conditions only
CEQA COMPLIANCE	Metropolitan to act as Lead Agency for Demonstration Project and, if appropriate, for Full-Scale Project. Metropolitan agrees to indemnify Sanitation District for any CEQA-related lawsuits.
WORKING COMMITTEE	Parties will establish Working Committee to manage activities and address issues on day-to-day basis.
DISPUTE RESOLUTION	Parties will attempt to resolve any disputes in prompt and equitable manner. Parties may pursue litigation if no resolution is reached.
INDEMNITY	Reciprocal indemnity provisions based on nature, scope and location of each Party’s activities.
INDEPENDENT CONTRACTORS	No partnership or joint venture. Each Party acting as independent contractor.

**TERM SHEET FOR POTENTIAL REGIONAL RECYCLED WATER PROGRAM
AGREEMENT WITH SANITATION DISTRICT NO. 2 OF LOS ANGELES COUNTY**

DEMONSTRATION PROJECT TERMS

TREATMENT FACILITY

Location	Parties will identify mutually acceptable location within boundaries of Joint Plant for Demonstration Project. Site property will be leased to Metropolitan at no cost.
Capacity	Demonstration Project anticipated to produce approximately one MGD of purified water. Exact design and configuration determined by Metropolitan in its sole discretion.
Design and Construction	<p>Metropolitan will permit, design and construct Demonstration Project and any power feeds, raw water supply lines, waste stream lines, and other process lines (“Ancillary Facilities”) within two years of Effective Date. Metropolitan responsible for costs of permitting, design and construction activities, except to extent they are covered by other entities.</p> <p>Sanitation District will be responsible for any preexisting hazardous wastes or contaminated soil or groundwater identified during design or encountered during construction. Metropolitan will be responsible for all other construction wastes.</p>
Ownership and Operation	<p>Metropolitan will be sole owner of Demonstration Project and Ancillary Facilities and will operate and maintain them for duration of Agreement Term. Metropolitan responsible for costs associated with operation and maintenance of the Demonstration Project and Ancillary Facilities.</p> <p>Parties may utilize Demonstration Project for public outreach purposes, which may include providing tours of facility.</p>
Removal of Demonstration Project	<p>At end of Demonstration Project, Sanitation District has right to purchase Demonstration Project and Ancillary Facilities for their salvage value.</p> <p>If Sanitation District does not purchase the facilities, then Metropolitan must remove them and return site to pre-project condition within two years of notice from Sanitation District.</p>

**TERM SHEET FOR POTENTIAL REGIONAL RECYCLED WATER PROGRAM
AGREEMENT WITH SANITATION DISTRICT NO. 2 OF LOS ANGELES COUNTY**

**Permits and
Authorizations**

Metropolitan will secure any permits, authorizations and approvals required to construct and operate Demonstration Project and Ancillary Facilities. Sanitation District will cooperate with Metropolitan in securing such permits, authorizations and approvals.

Utilities

Sanitation District will provide all utility connections and services needed to construct and operate Demonstration Project at no cost to Metropolitan.

SOURCE WATER

General Obligation

Sanitation District will provide secondary effluent from Joint Plant ("Source Water") in amount sufficient to meet treatment capacity of Demonstration Project at no cost to Metropolitan. Parties will agree on schedule and criteria for delivery of Source Water to Demonstration Project prior to final design.

**Source Water
Facilities**

Construction: Sanitation District will design and construct any facilities necessary to deliver Source Water to Demonstration Project ("Source Water Delivery Facilities") and any Joint Plant tie-ins ("Tie-In Facilities") within two years of the Effective Date.

Ownership and Operation: Sanitation District will be sole owner of Source Water Delivery and Tie-In Facilities and will operate and maintain them for duration of Agreement Term.

Permits and Authorizations: Sanitation District will secure any permits, authorizations and approvals required to construct and operate Source Water Delivery and Tie-In Facilities. Metropolitan will cooperate with Sanitation District in securing such permits, authorizations and approvals.

OTHER TERMS

**Distribution and Use
of Purified Water**

Metropolitan will convey all purified water produced by Demonstration Project to suitable location within the Joint Plant, as determined by Sanitation District.

Sanitation District will be responsible for and have discretion over any subsequent distribution, use or disposal of the purified water, and be entitled to any revenues resulting from such distribution, use or disposal.

**TERM SHEET FOR POTENTIAL REGIONAL RECYCLED WATER PROGRAM
AGREEMENT WITH SANITATION DISTRICT NO. 2 OF LOS ANGELES COUNTY**

**Disposal of Treatment
Residuals**

Sanitation District responsible for disposal of any and all residuals generated by the Demonstration Project ("Treatment Residuals"). Metropolitan will return all Treatment Residuals to suitable location at Joint Plant, as determined by the Sanitation District prior to commencement of final design.

Connection of the Demonstration Project to the Joint Plant will not be considered sewer connection. Sanitation District will not assess any charge or fee on Metropolitan for disposal of Treatment Residuals at Joint Plant.

**Laboratory Analyses
and Data Sharing**

Parties will jointly conduct sampling and laboratory analyses as necessary to monitor and determine treatment efficacy of Demonstration Project. Sanitation District responsible for sampling and laboratory analyses upstream of Demonstration Project; Metropolitan responsible for sampling and laboratory analyses within and downstream of Demonstration Project. Parties will share water quality and process data associated with operation of Joint Plant and Demonstration Project during Agreement Term.

**Development of Full-
Scale Project
Requirements**

Source Water Criteria: Parties will work collaboratively to develop Source Water quality and flow criteria that will ensure cost-effective treatment at any Full-Scale Project facilities constructed during subsequent phases of program. Parties also will meet and confer to develop enhancements to Sanitation District's industrial wastewater pretreatment program aimed at controlling Source Water contaminants.

Other Studies and Evaluations: Parties will cooperate in conducting and preparing other studies and plans as are necessary to assess economic and technical feasibility, financing needs, right-of-way and permitting requirements, environmental and regulatory compliance obligations, and engineering, construction and operational specifications for the Full-Scale Project.

**Pursuit of Grant and
Loan Funding**

Parties will jointly pursue grant and loan funding in support of Demonstration Project. Any funding received will be distributed based on percentage of design and capital costs contributed by each Party in support of Demonstration Project.

**TERM SHEET FOR POTENTIAL REGIONAL RECYCLED WATER PROGRAM
AGREEMENT WITH SANITATION DISTRICT NO. 2 OF LOS ANGELES COUNTY**

POTENTIAL FULL-SCALE PROJECT TERMS

TREATMENT FACILITY

Location	Parties will identify mutually acceptable location within boundaries of Joint Plant for Full-Scale Project, up to 35 acres ("Full-Scale Project Site"). Site property will be leased to Metropolitan for \$5,000 per acre (2015 dollars), with annual CPI adjustment. Lease term will begin when construction commences.
Capacity	Full-Scale Project anticipated to produce up to 150 MGD of purified water. Parties will agree on maximum capacity for each phase of Full-Scale Project prior to final design for that phase. Exact design and configuration determined by Metropolitan in its sole discretion.
Design and Construction	<p>Metropolitan will design and construct Full-Scale Project and Ancillary Facilities. Metropolitan responsible for costs of permitting, design and construction activities, except to extent they are covered by other entities.</p> <p>Sanitation District will be responsible for any preexisting hazardous wastes or contaminated soil or groundwater identified during design or encountered during construction at the Full-Scale Project Site. Metropolitan will be responsible for all other construction wastes.</p>
Ownership and Operation	<p>Metropolitan will be sole owner of Full-Scale Project and Ancillary Facilities and will operate and maintain them for duration of Program which is anticipated to have minimum duration of 50 years.</p> <p>Metropolitan responsible for costs associated with operation and maintenance of the Full-Scale Project and Ancillary Facilities.</p>
Permits and Authorizations	Metropolitan will secure any permits, authorizations and approvals required to construct and operate the Full-Scale Project. Sanitation District will cooperate with Metropolitan in securing such permits, authorizations and approvals.
Utilities	Except for disposal of treatment residuals, Metropolitan responsible for providing any and all utility connections and services needed to construct and operate the Full-Scale Project.

**TERM SHEET FOR POTENTIAL REGIONAL RECYCLED WATER PROGRAM
AGREEMENT WITH SANITATION DISTRICT NO. 2 OF LOS ANGELES COUNTY**

SOURCE WATER**General Obligation**

Sanitation District will provide Source Water in amount sufficient to meet the treatment capacity of Full-Scale Project as constructed at no cost to Metropolitan.

Prior to final design for each phase of project, Parties will agree on the water quality and flow criteria that will apply to any Source Water delivered to the project during that phase ("Source Water Criteria"). Once these criteria are established, Sanitation District will not make any changes in Joint Plant facilities, operations or design that may significantly adversely affect quality or quantity of Source Water, unless required to meet regulatory requirements. The Parties shall meet and confer in good faith to determine appropriate actions, if changes are required.

Sanitation District will not enter into any agreement to provide secondary-treated effluent to another entity or project that could significantly reduce amount of Source Water available to Full Scale Project without Metropolitan's consent.

If circumstances beyond control of Sanitation District adversely impact quality or volume of Source Water, its Chief Engineer may temporarily limit amount of Source Water made available to Full-Scale Project. Sanitation District will use best efforts to reestablish availability of Source Water.

Sanitation District not liable for any costs or damages resulting from a temporary interruption in service or limitation of availability of Source Water due to decreased influent flows, operation difficulties, or an inability of Sanitation District to meet NPDES requirements.

**Source Water
Facilities**

Construction: Sanitation District will design and construct any facilities necessary for Source Water Joint Plant Tie-Ins ("Tie-In Facilities").

Ownership and Operation: Sanitation District will be sole owner of Source Water Tie-In Facilities and will operate and maintain these facilities for the duration of the Agreement Term.

Permits and Authorizations: Sanitation District will secure any permits, authorizations and approvals required to construct and operate the Source Water Tie-In Facilities. Metropolitan will cooperate with Sanitation District in securing such permits, authorizations and approvals.

**TERM SHEET FOR POTENTIAL REGIONAL RECYCLED WATER PROGRAM
AGREEMENT WITH SANITATION DISTRICT NO. 2 OF LOS ANGELES COUNTY**

**Source Water Control
Program**

Prior to commencement of final design for each phase of Full-Scale Project, Parties shall agree on program for controlling entry of contaminants into Source Water delivered to Full-Scale Project during that phase.

OTHER TERMS

**Distribution and Use
of Purified Water**

Metropolitan will be responsible for and have discretion over any distribution, use or disposal of all purified water produced from Full-Scale Project, except as follows:

- Metropolitan will provide Member Agencies within Sanitation District Joint Outfall service area with right of first refusal to purchase purified water on same terms and conditions as would be offered to Metropolitan's other Member Agencies. Right of first refusal applies solely to amount of purified water estimated to be produced by each phase of Full-Scale Project and must be exercised prior to the commencement of final design for that phase. If excess purified water becomes available from the Full-Scale Project after its construction, Metropolitan will provide Member Agencies within Sanitation District Joint Outfall service area with right of first refusal to purchase such excess on same terms and conditions as would be offered to Metropolitan's other Member Agencies.
- Metropolitan will provide Sanitation District with an allotment of purified water at no cost based on size of Full-Scale Project's treatment capacity: (i) 0 to 60 MGD: 600 AFY; (ii) 61 to 100 MGD: 1,300 AFY; (iii) 101 to 150+MGD: 1,800 AFY. Allotment will be delivered to groundwater basins where Metropolitan has suitable facilities, as directed by the Sanitation District.
- Sanitation District has option to purchase up to 1 MGD of additional purified water at Metropolitan's cost of treatment for Joint Plant uses. Joint Plant uses include those uses identified and implemented during the Demonstration Project. Delivery and use of purified water under this option is responsibility of Sanitation District.

**TERM SHEET FOR POTENTIAL REGIONAL RECYCLED WATER PROGRAM
AGREEMENT WITH SANITATION DISTRICT NO. 2 OF LOS ANGELES COUNTY**

**Disposal of Treatment
Residuals**

Sanitation District responsible for disposal of residuals generated by treatment of Source Water at the Full-Scale Project (“Treatment Residuals”).

Prior to commencement of final design for each phase of Full-Scale Project, Parties will agree on quantity and quality of Treatment Residuals to be disposed at the Joint Plant during that phase. If anticipated quantity and quality of Treatment Residuals would interfere with Sanitation District’s ability to discharge its waste streams in compliance with applicable laws, rules and regulations, Parties will meet and confer to develop actions within their respective treatment operations to ensure compliance.

Metropolitan will return all Treatment Residuals to suitable locations at Joint Plant, as determined by the Sanitation District prior to commencement of final design for the project.

As needed, Metropolitan will treat non-brine components of Treatment Residuals to standards generally applicable to current industrial waste dischargers.

Connection of the Full-Scale Project to the Joint Plant will not be considered sewer connection. Sanitation District will not assess any charge or fee on Metropolitan for disposal of Treatment Residuals at Joint Plant.

**Laboratory Analyses
and Data Sharing**

Parties will jointly conduct sampling and laboratory analyses as necessary to monitor and determine treatment efficacy of Full-Scale Project. Sanitation District responsible for sampling and laboratory analyses upstream of Demonstration Project; Metropolitan responsible for sampling and laboratory analyses within and downstream of Demonstration Project. Parties will share water quality and process data associated with operation of Joint Plant and Full-Scale Project during term of Program.

**Pursuit of Grant and
Loan Funding**

Parties will jointly pursue grant and loan funding in support of Full-Scale Project. Any funding received will be distributed based on percentage of design and capital costs contributed by each Party in support of Full-Scale Project.



Financial Statement for Demonstration-Scale Recycled Water Treatment Plant Appropriation

A breakdown of Board Action No. 1 for Appropriation No. 15493 for the Demonstration-Scale Recycled Water Treatment Plant¹ is as follows:

	Initial Action No. 1 (Nov. 2015)	New Total Appropriated Amount
Labor		
Owner Costs (Program mgmt., permitting, bidding)	\$1,480,000	\$1,480,000
Submittals Review & Record Drwgs	140,000	140,000
Construction Inspection and Support	750,000	750,000
Metropolitan Force Construction	160,000	160,000
Start-Up, Operational Testing and Reporting	790,000	790,000
Materials and Supplies	100,000	100,000
Incidental Expenses	50,000	50,000
Professional/Technical Services	3,130,000	3,130,000
Contracts	7,500,000	7,500,000
Remaining Budget	900,000	900,000
Total	\$ 15,000,000	\$ 15,000,000

Funding Request

Appropriation Name:	Demonstration-Scale Recycled Water Treatment Plant		
Source of Funds:	Revenue Bonds, Replacement and Refurbishment or General Funds		
Appropriation No.:	15493	Board Action No.:	1
Requested Amount:	\$ 15,000,000	Budget Page No.:	N/A
Total Appropriated Amount:	\$ 15,000,000	Total Appropriation Estimate:	To be determined

¹ This is the initial appropriation for the Demonstration-Scale Recycled Water Treatment Plant.



DISCUSSION ITEM

November 4, 2015

TO: Board of Directors

FROM: Robert Hunter
General Manager

Staff Contact: Harvey De La Torre

SUBJECT: Status on Metropolitan's 2015 Integrated Resources Plan (IRP) – MET's Public Outreach Workshop held on October 22, 2015

STAFF RECOMMENDATION

Staff recommends the Board of Directors review and discuss this information

REPORT

On October 22, 2015, Metropolitan Water District (MET) held its public outreach workshop on updating its Integrated Water Resource Plan (IRP). Attendees included elected officials representatives, environmental & water organizations, consultants, public and planning agencies, and community leaders. With over 200 participants, the workshop was held at Metropolitan's Headquarters from 9:30 am to 3:30 pm. The discussion was broken into two parts, with the morning session focusing on the general description and purpose of the IRP, process, and current situation regarding water supplies and demands; followed with an afternoon session on participant dialogue on four key areas:

- 1) Future of Water Conservation
- 2) Building Local Resources (Recycling, Desalination, Stormwater, and Greywater)
- 3) Sustainable Groundwater Management
- 4) Stabilizing Imported Supplies

Comments from the public range from the potential impacts of climate change on MET's future supplies and demands to how we encourage the development of more recycled water. However, during the morning session there were comments raised by a few representatives from Food & Water Watch strongly opposing the construction of the tunnels in the Delta. Their opposition was focused on the benefits the Delta fix would provide to large Corporate Agriculture Business in California.

Budgeted (Y/N): n/a	Budgeted amount: n/a	Core <input checked="" type="checkbox"/> _X_	Choice <input type="checkbox"/> __
Action item amount: n/a		Line item:	
Fiscal Impact (explain if unbudgeted):			

The workshop ended with the introduction of a Water Tomorrow Innovation Game (idea-generating contest), where the public can post to MET's IRP website innovative, solution-oriented ideas to help meet the water challenges Southern California's faces and other can comment and build on these posted ideas.

Status on MET's 2015 IRP Technical Process

MWDOC Board Workshop on MET Issues
November 4, 2015

2015 IRP Process Split Into Two Parts

- Phase 1: Technical update
 - Develop regional targets to support long-term reliability
- Phase 2: Resource Implementation Policies
 - How might we achieve the targets?
 - Local and regional responsibilities
- Both efforts have extensive interaction with Metropolitan's Board through the IRP Committee

Phase 1: IRP Technical Update Process and Schedule



IRP Public Outreach Workshop

- Held at MET's HQ on October 22, 2015 from 9:30 am to 3:30 pm
- Attendees included
 - Elected Official Reps
 - Environmental & Water Organizations
 - Consultants
 - Public and Planning agencies
 - Community leaders and Organizations

WORKSHOP REMINDER

Thursday, October 22

9:30 a.m. - 3:30 p.m.

METROPOLITAN WATER DISTRICT HEADQUARTERS
700 N. Alameda Street
Los Angeles, CA 90012
adjacent to Historic Union Station

Forum to discuss Southern California's Water Future:

WATER TOMORROW
Integrated Water Resources Plan

The Metropolitan Water District of Southern California is updating its water resources plan that guides the way supplies are developed and managed. **Water Tomorrow** will be a roadmap for securing the Southland's water supply reliability over the next 25 years.

Questions. Email MWDIRP@mwdh2o.com

Over 200 Participants



Dialogue



Topic Covered

- Future of Water Conservation
- Building Local Resources
 - Recycling
 - Desalination
 - Stormwater
 - Greywater
- Sustainable Groundwater Management
- Stabilizing Imported Supplies

Next Steps – Water Tomorrow

- Phase 1: IRP Technical Update
 - IRP Committee considers Technical Update adoption: December 2015
 - IRP Technical Update Final Report: Early 2016
- Phase 2: Investigate Policy Implications
 - Kick-off: Early 2016



Item No. 4

DISCUSSION ITEM

November 4, 2015

TO: Board of Directors & MWD Directors

FROM: Robert J. Hunter
General Manager

Staff Contact: Harvey De La Torre

SUBJECT: MWD Items Critical To Orange County

STAFF RECOMMENDATION

Staff recommends the Board of Directors to review and discuss this information.

SUMMARY

This report provides a brief update on the current status of the following key MWD issues that may affect Orange County:

- a) MWD's Water Supply Conditions
- b) MWD's Finance and Rate Issues
- c) Colorado River Issues
- d) Bay Delta/State Water Project Issues
- e) MWD's Ocean Desalination Policy and Potential Participation by MWD in the Doheny Desalination Project and in the Huntington Beach Ocean Desalination Project (Poseidon Desalination Project)
- f) Orange County Reliability Projects
- g) East Orange County Feeder No. 2

ISSUE BRIEF # A

SUBJECT: MWD's Water Supply Conditions

RECENT ACTIVITY

Southern California continues its trends of keeping water usage low, regardless of the fact that August, September and October recorded above average temperatures. Water usage in Orange County is approximately 23% lower than 2013 usage.

As we enter in the winter/raining season for 2015/16, the question still remains what will this El Nino year bring as far as rainfall for southern California, and more importantly, for Northern California. Previous strong El Nino system (1997-98 and 1982-83) brought significant above average precipitation to Northern California. Forecasts from the National Weather Service project 70-80% chance of above average precipitation in the months of Jan, Feb. and March for most of California. However, as we experience last winter only time will tell how much this rainfall will this winter season will truly bring to California.

ISSUE BRIEF # B

SUBJECT: MWD's Finance and Rate Issues

RECENT ACTIVITY

MWD Financial Report

At Metropolitan's (MWD) October Finance and Insurance Committee, MWD staff report that water sales for the first quarter are 158,900 Acre-Feet (AF) less than budget estimates of 1.75 MAF. This is a 27% reduction and could result in MET's total water sales fall below 1.6 MAF by the end of the year. This significant reduction in water sales along with lower than expected power sales results in projecting revenues to come in less than \$168.5 million than budget.

Due to the recent land purchases in PVID and water purchases with Southern Nevada, MET projects expenses will be \$60 million more than budget.

To evaluate the potential impact of decrease water sales and its impact to unrestricted reserve, MET staff updated the following financial table:

Projected Unrestricted Reserve Balance Scenarios 2015/16 (\$ in millions)

Water Sales	1.6 MAF	1.5 MAF	1.4 MAF
Beginning Unrestricted Reserves	\$476	\$476	\$476
Portion of \$264M PVID Land Purchase Funded from Unrestricted Reserves	(100)	(100)	(100)
Southern Nevada Water Transfers	(44)	(44)	(44)
Impact of Sales lower than 1.75 MAF	(154)	(228)	(292)
Reduce Expenditures in Current Year	34	34	34
Debt Fund Capital Program	<u>253</u>	<u>253</u>	<u>253</u>
Projected Ending Unrestricted Reserves	\$465	\$391	\$327

ISSUE BRIEF # C

SUBJECT: Colorado River Issues

RECENT ACTIVITY

Metropolitan submits 2016 Colorado River Water Deliveries to Reclamation

On September 15, Metropolitan submitted its 2016 Colorado River Water Diversion request letter to the Bureau of Reclamation (Reclamation). Metropolitan's letter estimated that 961,000 acre-feet of Colorado River supplies would be available to Metropolitan in 2016, but recognized that the projection could go up or down based on a number of factors, including higher priority agricultural demands, storing or taking delivery of Intentionally Created Surplus (ICS) supplies in Lake Mead, or implementing interstate water exchanges. Metropolitan's current supplies and storage reserves from the Colorado River are not enough to fill the Colorado River Aqueduct to capacity in 2016; however, if the need arises, Metropolitan could develop and implement new water supply programs to fill the Aqueduct in 2016. Conversely, if next year were wet, Metropolitan could store ICS water in Lake Mead for future use.

Metropolitan and Nevada agencies execute amendment to Interstate Storage Agreement

Following Metropolitan's Board approval in September 2015, on October 19, Metropolitan, Southern Nevada Water Authority (SNWA), and the Colorado River Commission of Nevada executed a third amendment to the Operational Agreement, which governs the terms of the interstate storage agreement between Metropolitan and Nevada. Under the terms of the amendment, Metropolitan will pay SNWA \$44.4 million, and SNWA will make 150,000 acre-feet of water available to Metropolitan in 2015. Metropolitan is in the process of updating its 2015 Colorado River Water delivery request, which will be sent to the Bureau of Reclamation for approval.

Metropolitan Funds Two Additional System Conservation Projects

Also in September, Metropolitan and its funding partners funded two additional system conservation projects that fall under the System Conservation Agreement program. In addition to funding agricultural conservation projects in Nevada earlier this year, a water recycling project in Bullhead City, Arizona, and a groundwater storage forbearance pilot program with the Tohono O'odham Nation in Central Arizona were funded this month. Metropolitan's share of the funding for the two projects totaled about \$600,000; remaining funding was provided by Southern Nevada Water Authority, Central Arizona Project, Denver Water, and Reclamation. The conserved water will be added to storage in Lake Mead to help alleviate Colorado River drought conditions. Additional projects are being evaluated and Metropolitan's total budget of \$2 million will likely be expended by the end of this year.

Bard Water District Expresses Interest in Pilot Fallowing Program

Bard Water District (BWD), located in the Southeast corner of California, held a meeting to discuss a draft proposal from Metropolitan to develop a pilot land fallowing program within BWD. The program would pay farmers to not grow crops during the summer season in 2016 and potentially 2017. Several farmers expressed interest in such a program, depending upon the specific terms of the agreement. In response to BWD's interest, Metropolitan is developing a draft term sheet for the pilot program to see if there is sufficient interest in moving forward.

ISSUE BRIEF # D

SUBJECT: Bay Delta/State Water Project Issues

RECENT ACTIVITY

Bay Delta Conservation Plan/California WaterFix

Metropolitan staff work jointly with the State Water Project (SWP) and Central Valley Project (CVP) public water agencies to prepare and submit comments on the Bay Delta Conservation Plan (BDCP) and California Water Fix Recirculated Draft Environmental Impact Report/Supplemental Draft Environmental Impact Statement (RDEIR/SDEIS). A Significant effort by MET staff contributed to the review of the RDEIR/SDEIS and the development of a joint public comment letter with other SWP contractors. The comment letter will express the public water agencies continued support for critically needed infrastructure improvements in the Delta as a way of securing reliable water supply and to help improve environmental conditions for native species and their habitats, based on a sound business case that supports the magnitude of investment in public infrastructure. Part of the business case the public water agencies will be considering over the next months includes confidence in the project providing sufficient water supplies in a more stable and collaborative regulatory framework.

As reported previously, the California Department of Water Resources (DWR) and U.S. Bureau of Reclamation (USBR) submitted a joint petition for change in water right permit and license conditions for the SWP and federal CVP to add points of diversion of water on the Sacramento River associated with the California Water Fix project. The State Water Resources Control Board (SWRCB) has received comments on the petition, and anticipates issuing a joint public notice of the water right change petition and notice of a hearing on the petition in late October or early November 2015. A pre-hearing conference to organize the format of the hearing and to discuss procedural matters, such as those raised in the various letters, is tentatively planned for late January or early February 2016. Hearings on some of the key issues could begin as early as April 2016.

Salinity Barrier Removal

DWR starting removing the emergency salinity barrier across West False River in the Delta in September 2015, and expects to complete barrier removal by mid-November 2015. Approximately 150,000 tons of rock is being removed from the West False River barrier and being placed at the Rio Vista emergency stockpile site. While this rock may be used for a drought barrier in the future, DWR has indicated it is much more likely this rock will remain in place at the Rio Vista site for catastrophic emergencies when resources are stretched thin and access problems necessitate use of stockpiles in the Delta. This would increase overall rock stockpiles for Delta region emergency response by about 60 percent. Rock for possible future drought barriers would be an additional acquisition and could add to the stockpile.

To accommodate this rock and provide additional rock storage capacity for emergency response, DWR has increased its total storage area at Rio Vista from about 40 to 80 acres. All-weather access ramps and roads being developed under the state Drought Program at this site will be completed in November 2015, as part of the state's Delta Flood Emergency Program to purchase sheet pile and other materials for flood and earthquake emergency response.

Science Activities in the Delta

On August 5, 2015, the California Department of Fish and Wildlife released a proposal solicitation notice for Proposition 1 Watershed Restoration, Delta Water Quality and Ecosystem Restoration Grant Programs. The Proposition 1 Grant Program proposal solicitation is calling for scientific studies that will evaluate listed species and habitat restoration, and contain cost sharing opportunities. Staff worked with collaborating scientists at ICF environmental consulting firm and also U.C. Davis to develop three research proposals in response to the solicitation. ICF and U.C. Davis investigators will be providing the majority of the expertise, labor, and technical skills to the proposed studies. Metropolitan is proposing to provide cost sharing for each of the studies within the General Manager's authority and is requesting the remainder from the Proposition 1 Grant Program. The first proposal would expand existing studies of longfin smelt population indicators and distribution. This three-year study would test the hypothesis that most longfin smelt hatch in San Pablo Bay during wet years and that factors affecting distribution of juveniles and adults explain declines of abundance. The second study would focus on the technical development of acoustic tags small enough to be inserted into Delta smelt. Such tags would provide higher resolution for tracking purposes and would have enormous significance in the study of Delta smelt movement and survival. The third proposal would study the health of Delta smelt captured in various surveys. The goal would be to understand the relationship between Delta smelt habitat and Delta smelt health.

ISSUE BRIEF # E

SUBJECT: MWD's Ocean Desalination Policy and Potential Participation by MWD in the Doheny Desal Project and in the Huntington Beach Ocean Desalination Project (Poseidon Desalination Project)

RECENT ACTIVITY

Doheny Desalination Project

South Coast WD's Doheny Program Manager from the consulting firm of GHD, Mark Donovan, made a presentation to the South Coast Board on October 22. The presentation covered their scope of work and anticipated schedule for the initial 4 to 5 mgd project, anticipated as a demonstration project. They are planning on getting the project operational as early as 2019, although all involved indicated that the schedule is tight. MWDOC Directors Susan Hinman and Sat Tamaribuchi attended as did Karl Seckel. MWDOC has been working to ensure that the Program Manager and South Coast WD have all of the technical information from the years of MWDOC managing the project. MWDOC's files are in the process of being copied and provided to both parties.

Huntington Beach Ocean Desalination Project (Poseidon Project)

OCWD has continued work on evaluating where the product water produced from the Poseidon Project would be utilized, either for the seawater barrier operations, injection or replenishment in the groundwater basin, for direct delivery to other agencies or some combination thereof. OCWD's report on the costs involved in using 100% of the Poseidon water to replenish the groundwater basin will be presented to the OCWD Board on December 16. The report will also have the other delivery options included, but the main focus of the report is what it will take to replenish all 50 mgd into the groundwater basin. Karl Seckel participated with OCWD in a meeting with the City of Huntington Beach to discuss the various project concepts and how the City's water system might be utilized to provide Poseidon water to other agencies under the various options.

ISSUE BRIEF # F

SUBJECT: Orange County Reliability Projects

RECENT ACTIVITY

Central Pool Augmentation Program

There are no updates to report.

Orange County Water Reliability Study

At the October 1 meeting of the Reliability Study Workgroup, the main items of discussion included:

- Phase 1 Completion Schedule
- Phase 2 Work Plan
- Status Report on SUPPLY GAP Analysis
- OC Seismic Impacts Analysis
- Discussion on SYSTEM GAP Analysis
- List of Proposed Local Projects or Project Yield

At the October 15 meeting, the main item of discussion was the initial release of the modeling work on the Supply Gap. The Workgroup spent about 2 hours working through the Supply Gap analysis and what it means.

One last meeting of the Workgroup is scheduled for Nov 5 to reconsider the Supply Gap and to review the List of Potential OC Projects generated in this phase of the study.

At the October Groundwater Producer's meeting a request was made for a "pause" at the end of Phase 1 to allow all of the agencies to participate in a series of Workshops to review the work, fully understand the implications and to develop a work plan for any subsequent efforts under a Phase 2 Scope of Work, also to be developed through the workshop process. It is expected that these workshops will take place in Nov, Dec and January. A scope of work to secure additional technical assistance for the workshops is being provided to MWDOC's P&O Committee. Additional discussions will be held at the P&O Committee on November 2.

A presentation on the summary results from Phase 1 was made to the Joint meeting of the MWDOC and OCWD Board at the Joint Planning Committee on October 28.

ISSUE BRIEF # G

SUBJECT: East Orange County Feeder No. 2

RECENT ACTIVITY

Use of East Orange County Feeder No. 2 for Conveyance of Groundwater and Poseidon Water

Nothing new to report.

**Summary Report for
The Metropolitan Water District of Southern California
Board Meeting
October 13, 2015**

COMMITTEE ASSIGNMENTS

None. (Agenda Item 5C)

FINANCE AND INSURANCE COMMITTEE

Adopted Ordinance No. 149 determining that the interests of Metropolitan require the use of revenue bonds in the aggregate principal amount of \$500 million to fund a portion of CIP expenditures. (Agenda Item 8-1)

Approved the draft Remarketing Statements and authorized the General Manager to execute and distribute them in connection with the remarketing of Water Revenue Refunding Bonds, 2011 Series A1 and A3, and 2009 Series A2. (Agenda Item 8-2)

ENGINEERING AND OPERATIONS COMMITTEE

Appropriated \$12.5 million; and awarded \$9,777,000 contract to Myers and Sons Construction, LP to rehabilitate sand traps on the Colorado River Aqueduct. (Approp. 15373) (Agenda Item 8-3)

WATER PLANNING & STEWARDSHIP COMMITTEE

Authorized the General Manager to amend Agreement No. 129415 with Electric and Gas Industries Association to increase the maximum amount payable under the contract from \$290 million to \$620 million to allow for administration of the increased activity in Metropolitan's regional rebate program. (Agenda Item 8-4)

COMMUNICATIONS AND LEGISLATION COMMITTEE

Authorized the General Manager to change Metropolitan's membership level in the Los Angeles Economic Development Corporation and pay the additional membership dues at a total rate of \$12,500 per year. (Agenda Item 8-5)

ORGANIZATION, PERSONNEL AND TECHNOLOGY COMMITTEE

Approved Metropolitan Water District of Southern California's Salary Schedule pursuant to CalPERS regulations. (Agenda Item 8-6)

LEGAL AND CLAIMS COMMITTEE

Received a report on existing litigation; *Cora Constructors, Inc. v. The Metropolitan Water District of Southern California*, San Bernardino Superior Court Case No. CIVDS 1411824; and authorized increase in maximum amount payable under contract with Musick Peeler & Garrett for legal services by \$250,000 to a new total amount not to exceed \$350,000. (Approp. 15373). (Agenda Item 8-7)

REAL PROPERTY AND ASSET MANAGEMENT COMMITTEE

Authorized renewal of Metropolitan's office lease in Washington D.C. (**Agenda Item 8-8**)

CONSENT CALENDAR

In other action, the Board:

Authorized the General Manager to grant a permanent easement to the city of Temecula.
(**Agenda Item 7-1**)

Authorized increase of \$200,000 to the agreement with Application Software Technology Corporation, for a new not-to-exceed total of \$2,355,000, for the Oracle R12 Upgrade Project. (Approp. 15484). (**Agenda Item 7-2**)

THIS INFORMATION SHOULD NOT BE CONSIDERED THE OFFICIAL MINUTES OF THE MEETING.

Board letters related to the items in this summary are generally posted in the Board Letter Archive approximately one week after the board meeting. In order to view them and their attachments, please copy and paste the following into your browser <http://edmsidm.mwdh2o.com/idmweb/home.asp>.



Regular Board Meeting

November 10, 2015

12:00 p.m. – Board Room

Tuesday, November 10, 2015 Meeting Schedule		
7:00-8:00 a.m.	Rm. 1-101	Dirs. Computer Training
9:00 a.m.	Rm. 2-145	L&C
10:30 a.m.	Rm. 2-456	OP&T
12:00 p.m.	Board Room	Board Meeting

MWD Headquarters Building



700 N. Alameda Street



Los Angeles, CA 90012

1. Call to Order

- (a) Invocation: Jeffery Thomas, Board Member, Municipal Water District of Orange County
- (b) Pledge of Allegiance: Director Sylvia Ballin

2. Roll Call

3. Determination of a Quorum

- 4. Opportunity for members of the public to address the Board on matters within the Board's jurisdiction. (As required by Gov. Code § 54954.3(a))

5. OTHER MATTERS

- A. Approval of the Minutes of the Meeting for October 13, 2015. (A copy has been mailed to each Director)
Any additions, corrections, or omissions
- B. Report on Directors' events attended at Metropolitan expense for month of October

- C. Approve committee assignments
- D. Chairman's Monthly Activity Report

6. DEPARTMENT HEADS' REPORTS

- A. General Manager's summary of Metropolitan's activities for the month of October
- B. General Counsel's summary of Legal Department activities for the month of October
- C. General Auditor's summary of activities for the month of October
- D. Ethics Officer's summary of activities for the month of October

7. CONSENT CALENDAR ITEMS — ACTION

- 7-1** Appropriate \$960,000; and authorize design and repair of expansion joints on pump delivery lines along the Colorado River Aqueduct (Approp. 15483). (E&O)

Recommendation:

Option #1:

Adopt the CEQA determination that the proposed action is categorically exempt, and

- a. Appropriate \$960,000; and**
- b. Authorize design to repair 16 expansion joints on pump delivery lines along the CRA, and authorize construction to repair three of those joints.**

- 7-2** Authorize a long-term ground lease to Verizon Wireless for a telecommunications equipment site in the unincorporated area of Mentone, county of San Bernardino. (RP&AM)

Recommendation:

Option #1:

Adopt the CEQA determination that the proposed action is categorically exempt, and authorize the long-term ground lease to Verizon Wireless.

- 7-3** Authorize amendment of lease to Western Center Community Foundation dba the Western Science Center on Metropolitan-owned property in the city of Hemet, California. (RP&AM)

Recommendation:

Option #1:

Adopt the CEQA determination that the proposed action is categorically exempt, and authorize the amendment to Western Center Community Foundation dba the Western Science Center.

(END OF CONSENT CALENDAR)

8. OTHER BOARD ITEMS — ACTION

- 8-1** Adopt Twenty-First Supplemental Resolution to the Master Revenue Bond Resolution authorizing the sale of up to \$250 million of Water Revenue Bonds, 2015 Authorization; and approve expenditures to fund the cost of issuance of the Bonds. (F&I)

Recommendation:

Option #1:

Adopt the CEQA determination that the proposed action is not defined as a project and is not subject to CEQA, and

- a. Adopt the Twenty-First Supplemental; Resolution to the Master Revenue Bond Resolution authorizing the issuance of up to \$250 million of Water Revenue Bonds, 2015 Authorization and providing the terms and conditions for the sale and issuance of said Water Revenue Bonds; and**
- b. Approve up to \$1,885,000 for the payment of the cost of issuance of the Water Revenue Bonds to be paid from bond proceeds or Metropolitan funds.**

- 8-2** Appropriate \$36.2 million; award \$29.56 million contract to OHL USA, Inc. to rehabilitate Palos Verdes Reservoir; and authorize agreement with CDM Smith, Inc. in an amount not to exceed \$713,000 (Approps. 15417 and 15441). (E&O)

Recommendation:

Option #1:

Review and consider the information contained in Addendum No. 1 and the MND, and find that the proposed modifications will not have a significant impact on the environment, and

- a. Appropriate \$36.2 million ;**
- b. Award \$29.56 million contract to OHL USA, Inc. to rehabilitate Palos Verdes Reservoir; and**
- c. Authorize agreement with CDM Smith, Inc. in an amount not to exceed \$713,000.**

- 8-3** Appropriate \$15 million; and authorize: (1) agreement with County Sanitation District No. 2 of Los Angeles County for development of a potential regional recycled water supply program; and (2) design of a demonstration-scale recycled water treatment plant (Approp. 15493). (WP&S)

Recommendation:

Option #1:

Adopt the CEQA determination that the proposed action is categorically exempt, and

- a. Appropriate \$15 million;**
- b. Authorize agreement with County Sanitation District No. 2 of Los Angeles County, substantially in conformance with the terms included in Attachment 1 to the board letter, and in a form approved by the General Counsel, for implementation of a demonstration project and development of a potential regional recycled water supply program; and**
- c. Authorize design of a demonstration-scale recycled water treatment plant.**

- 8-4** Authorize entering into a new agreement with the California Department of Water Resources for the sale of renewable energy from five Hydroelectric Power Plants. (E&O)

Recommendation:

Option #1:

Adopt the CEQA determination that the proposed action is categorically exempt and is not subject to CEQA, and authorize the General Manager to enter into a new agreement under the terms described in the board letter for the sale of renewable energy from the five Metropolitan Hydroelectric Power Plants.

- 8-5** Authorize entering into three agency temporary skilled labor agreements. (OP&T)

Recommendation:

Option #1:

Adopt the CEQA determination that the proposed action is not defined as a project and is not subject to CEQA, and authorize the General Manager to enter into the following skilled craft labor agreements:

- a. A contract for agency temporary skilled craft labor with Grafton Inc., not to exceed \$325,000 per year;**
- b. A contract for agency temporary skilled craft labor with Johnson Services Group not to exceed \$325,000 per year; and**
- c. A contract for agency temporary skilled craft labor with Premier Personnel Resources not to exceed \$325,000 per year.**

- 8-6** Authorize entering into storage and exchange agreements with Antelope Valley-East Kern Water Agency; and approve payment of up to \$16.6 million for funding the agreements. (WP&S)

Recommendation:

Option #1:

Adopt the CEQA determination that the proposed action is categorically exempt, and

- a. Authorize the General Manager to enter into storage and exchange agreements with Antelope Valley-East Kern Water Agency consistent with the terms outlined in the board letter and in a form approved by the General Counsel;**
- b. Approve payment of up to \$16.6 million for funding the storage and exchange agreements with Antelope Valley-East Kern Water Agency; and**
- c. Approve additional payments from the Supply Program Budget should the exchange or storage programs exceed the initial allocated 30,000 AF.**

- 8-7 Report on existing litigation: *Shimmick Construction Company, Inc./Obayashi Corporation, a Joint Venture v. The Metropolitan Water District of Southern California*, LASC Case No. BC559603; and authorize increase of maximum amount payable under contract with (1) Hunt Ortmann Palffy Nieves Darling & Mah, Inc. for legal services by \$500,000 to an amount not to exceed \$600,000, and (2) Pacific Consultants Construction, Inc. for consulting services by \$250,000 to an amount not to exceed \$500,000 (Approp. 15389). (L&C)
[Conference with legal counsel—existing litigation; to be heard in closed session pursuant to Gov. Code Section 54956.9(d)(1)]
(To be mailed separately)

- 8-8 Authorize the General Manager to enter into a conditional purchase and sale agreement to acquire property from Delta Wetlands Properties in Contra Costa, San Joaquin, and Solano Counties. (RP&AM)
[Conference with real property negotiators; property identified as Contra Costa County Assessor's Parcel Nos. 023-040-026, 023-040-027, 023-050-001, 023-050-002, 023-070-011, 023-070-012, 023-080-010, 023-080-011, 023-090-001, 023-090-003, 023-090-004, 023-100-001, 023-100-002, 023-100-004, 023-100-007, 023-100-008, 026-060-003, 026-060-007, 026-060-008, 026-060-015, 026-060-016, 026-060-017, 026-060-018, 026-060-019, 026-070-001, 026-070-006, 026-070-010, 026-070-011, 026-070-012, 026-070-013, 026-080-004, 026-080-005, 026-080-006, 026-080-007, 026-080-008, 026-080-009; San Joaquin County Assessor's Parcel Nos. 069-030-35, 069-030-36, 069-030-37, 069-030-38, 069-030-39, 069-100-01, 069-100-02, 069-030-08, 069-030-09, 069-030-10, 069-030-11, 069-100-09, 069-030-19, 069-030-20, 069-030-21, 069-030-22, 069-030-23, 069-030-24, 069-030-26, 069-030-27, 069-030-28, 069-030-29, 069-030-30, 069-030-31, 069-030-32, 069-030-33, 069-030-34, 069-030-42, 069-030-44, 069-100-03, 069-100-04, 069-100-05, 069-100-08, 069-100-10, 069-100-11, 129-050-01, 129-050-02, 129-050-03, 129-050-04, 129-050-05, 129-050-06, 129-050-07, 129-050-08, 129-050-09, 129-050-11, 129-050-12, 129-050-13, 129-050-14, 129-050-15, 129-050-16, 129-050-17, 129-050-18, 129-050-19, 129-050-24, 129-050-25, 129-050-26, 129-050-27, 129-050-28, 129-050-52, 129-050-54, 129-050-55, 129-050-56, 129-050-60; and Solano County Assessor's Parcel No. 090-060-001; agency negotiators: Jeff Kightlinger and John Clairday; negotiating party: Delta Wetlands Properties; under negotiation: price and terms of payments; to be heard in closed session pursuant to Gov. Code Section 54956.8]
(To be mailed separately)

9. BOARD INFORMATION ITEMS

None

10. FUTURE AGENDA ITEMS

11. ADJOURNMENT

NOTE: At the discretion of the Board, all items appearing on this agenda and all committee agendas, whether or not expressly listed for action, may be deliberated and may be subject to action by the Board.

Each agenda item with a committee designation will be considered and a recommendation may be made by one or more committees prior to consideration and final action by the full Board of Directors. The committee designation appears in parentheses at the end of the description of the agenda item e.g., (E&O, F&I). Committee agendas may be obtained from the Board Executive Secretary.

Writings relating to open session agenda items distributed to Directors less than 72 hours prior to a regular meeting are available for public inspection at Metropolitan's Headquarters Building and on Metropolitan's Web site <http://www.mwdh2o.com>.

Requests for a disability related modification or accommodation, including auxiliary aids or services, in order to attend or participate in a meeting should be made to the Board Executive Secretary in advance of the meeting to ensure availability of the requested service or accommodation.