

# CALIFORNIA WATER FIX (WATERFIX)

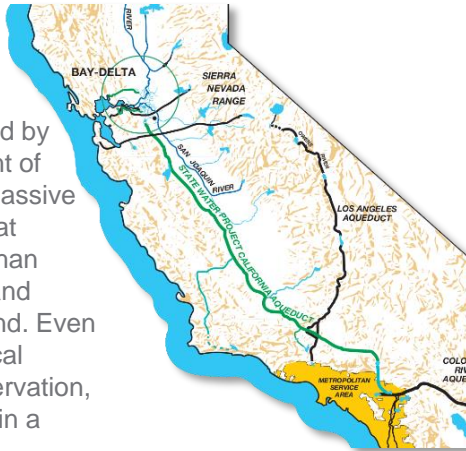


A STATE-OF-THE-ART REAL SOLUTION TO MODERNIZE, REPAIR AND PROTECT CALIFORNIA'S AGING WATER DELIVERY SYSTEM FROM THE NORTH



## STATE WATER PROJECT (SWP)

The State Water Project (SWP), built and operated by the California Department of Water Resources, is a massive water delivery system that provides water to more than **25 million** Californians and **700,000 acres** of farmland. Even with newly developed local supplies and more conservation, imported water will remain a critical water source.



**NEARLY 50% OF ORANGE COUNTY'S TOTAL WATER SUPPLY IS IMPORTED**

## SACRAMENTO-SAN JOAQUIN BAY DELTA



The Sacramento-San Joaquin Bay Delta (Delta) is the focal point for water distribution through the state, serving as the hub through which water passes from north to south. Its complex maze-like waterways, supported by a series of man-made dirt levees, are highly susceptible to damage from flooding and earthquakes.

**THERE IS A 72% CHANCE OF A 6.7 MAGNITUDE EARTHQUAKE HITTING SAN FRANCISCO BAY BY 2030.**



Since the 1800's, each of the Delta islands and tracts have flooded at least once. There have been about 100 levee failures since the early 1890s. The last levee break was repaired at a cost of \$90 million dollars.

## WHAT IS THE PROBLEM?

- 1 WASTED WATER**  
The current system cannot adequately capture and store water when it is available.
- 2 COST OF DOING NOTHING IS TOO GREAT**  
Impacts without the WaterFix could include species decline, water supply disruption, loss of jobs, and higher food and water prices.
- 3 OUTDATED AND UNRELIABLE SYSTEM**  
50-year old dirt levees in the Delta are all that protect this vital water supply from earthquake damage, salt-water intrusion, rising sea levels, storms and floods.
- 4 ENVIRONMENTAL DECLINE**  
Since the 1800's the Delta has been altered to support farming, transportation, commerce and housing development, which has in effect, harmed native and non-native species that inhabit or pass through the Delta.

## WHY A WATER FIX?



### STORM WATER CAPTURE

The WaterFix is designed to capture storm water which is currently flowing out to the ocean. A modernized system will effectively help refill reservoirs throughout the state.



### A PLAN FOR EMERGENCIES

Most southland water in reserves is imported. The WaterFix will help ensure that we have the supplies we need in critical times of drought and other emergencies.



### EARTHQUAKES

If dirt levees collapse, water supplies from the north will be destroyed and water deliveries throughout the state will be threatened.



### PROTECTING INVESTMENTS

Ratepayers have already invested hundreds of millions of dollars to build and maintain the SWP system. Modernizing the system will help protect this valuable investment.



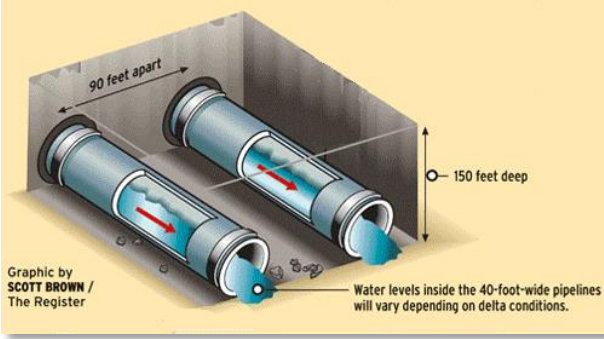
### JOB CREATION

The WaterFix will create over a hundred thousand *new* construction jobs and will *protect* nearly a million jobs statewide.



**CALIFORNIA WATER FIX**  
RELIABLE. CLEAN. WATER.

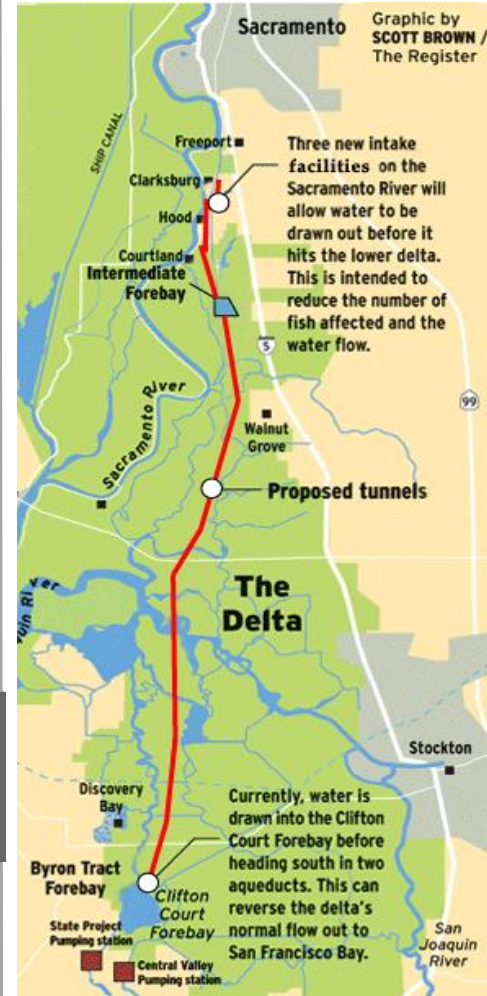
The Water Fix is supported by engineers, scientists, water experts, California businesses and environmental groups. The cost to fix the system is estimated to be \$14.9 billion dollars, or about \$5 a month for urban water users. It is an economically smart solution to our state's water problems.



## TWO 40 FOOT WIDE TUNNELS

150 feet underground and approximately 35 miles long, have been designed to protect California water supplies in the Delta. Water carried through the pipelines will vary depending on annual northern California weather conditions.

## PROPOSED TUNNEL ROUTE AND INTAKE LOCATIONS



## WATERFIX ENVIRONMENTAL ENHANCEMENTS

Mitigation for California WaterFix construction and operation will include about **2,300 ACRES** of habitat restoration and up to **13,300 ACRES** of habitat protection.



By fixing reverse flows and restoring important habitat, The WaterFix will enhance survival and recovery of delta smelt, salmon, and dozens of other aquatic and terrestrial species.



**CALIFORNIA ECO RESTORE**  
A STRONGER DELTA ECOSYSTEM.

Separate from The WaterFix, and over the next 5 years, California will pursue more than 30,000 acres of critical Delta restoration under the California EcoRestore program.

## WHAT IS CALIFORNIA ECORESTORE?

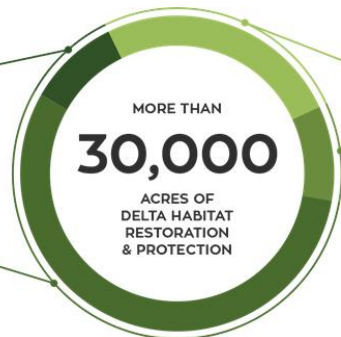
Native wetlands have been dredged and diked since the 1800's to support farming, transportation, commerce and housing development. Channelization of Delta waterways, the discharge of pollutants and the introduction of non-native species have all combined to degrade the quality of water and native habitat. EcoRestore is a California Natural Resources Agency initiative, executed in coordination with state and federal agencies, whose focus is implementing a complete suite of habitat restoration actions to support the long-term health of the Delta and its native aquatic and wildlife species.

**3,500 ACRES**  
MANAGED WETLANDS CREATED

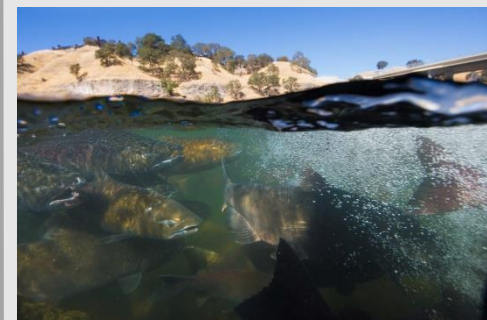
**9,000 ACRES**  
TIDAL & SUB-TIDAL HABITAT RESTORATION

**17,500+ ACRES**  
FLOODPLAIN RESTORATION

**1,000+ ACRES**  
PROPOSITION 1 & 1E FUNDED RESTORATION PROJECTS



Current pumps are powerful and cause reverse flows which trap endangered fish and pull them towards predators. State of the art construction techniques, advanced fish screens, and tunneling improvements, promise minimal impact on Delta species.



## ECORESTORE COMPONENTS

**RESTORATION PROJECTS** Projects contributing to the long-term health of the Delta.

**PLANNING** Regionally specific strategies to help direct restoration efforts.

**ADAPTIVE MANAGEMENT** Multi-agency plan to guide and monitor habitat management.



Street Address: 18700 Ward Street, Fountain Valley CA 92708  
Mailing Address: P.O. Box 20895, Fountain Valley CA 92728

Main Phone: (714) 963-3058 • Main Fax: (714) 964-9389  
Website: www.mwdoc.com